

1260 135th Ave.  
Murray, IA 50174  
153 Acres



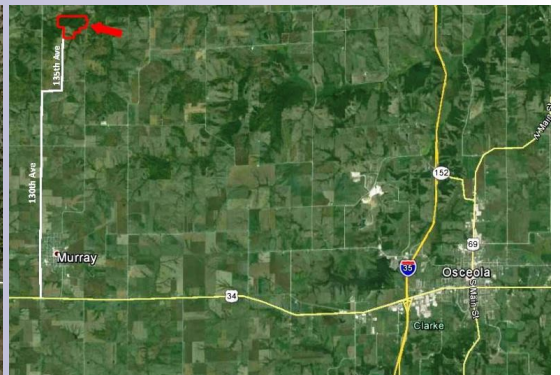
**Price:** \$6,470 per acre or \$990,000

- **Description:** Dream hunting property on a secluded dead end road. This ultimate recreational property has everything an outdoorsman could imagine. 153 acres m/l in prime whitetail country and only 45 minutes from West Des Moines.
- The property has about 130 acres of pristine hardwood timber with beautiful oak, walnut, and hickory trees. The custom built house was constructed in 2005, has 2,415 sq. ft. of living area, and 3 Bedrooms/ 3 ½ Baths. This home has granite counters, stainless steel appliances, hardwood floors, 6" wall insulation, geothermal heat/air, wood burning fireplace, and tongue and groove pine inside and out.
- The balcony off the second floor bedroom overlooks one of four ponds on the property. The largest pond is 40 ft. deep and holds bass, crappie, perch, and walleye. Landowner has not allowed hunting on the property in years and deer numbers are very healthy. The South River runs along the north-west corner of the property and a vast trail system runs throughout property.

**Taxes:** \$4,358

**Directions:** From Murray go north on 130<sup>th</sup> Ave for 3.5 miles. At Oakwood Street go east for ½ mile and the road turns north changing into 135<sup>th</sup> Ave. Continue on 135<sup>th</sup> for an addition 2 miles and property lies at the end of the road.

**Kyle Walker**  
P: 515.222.1347  
C: 515.291.5766  
Kyle.Walker@PeoplesCompany.com



Additional information can be found on our website: **LISTING # 12105 & 12104**

© 2014 Peoples Company We obtained the information above from sources we believe to be reliable. However, we have not verified its accuracy and make no guarantee, warranty or representation about it. It is submitted subject to the possibility of errors, omissions, change of price, rental or other conditions, prior sale, lease or financing, or withdrawal without notice. We include projections, opinions, assumptions or estimates for example only and they may not represent current or future performance of the property. You and your tax and legal advisors should conduct your own investigation of the property and transaction.