



FOR MORE INFORMATION ON
THIS LISTING, PLEASE CONTACT
Kandi Luensmann, Realtor
CELL: 254-223-8883
Kandi@goregrouptexas.com

DISCLAIMER

Broker and/or Agent does not make any representations, warranties or covenants of any kind or character, whether expressed or implied, with respect to the quality or condition of the property, the suitability of the property for any and all activities and uses which purchaser may conduct there on, compliance by the property with any laws, rules, ordinances or regulations if any applicable governmental authority, or habitability, merchantability, or fitness for any particular purpose. All drawings are neither legally recorded maps nor surveys and are not intended to be used as such. The information contained herein has been obtained from sources deemed reliable. However, we cannot warrant the complete accuracy thereof subject to errors, omissions, change of price, rental or other conditions, prior to sale, lease or financing, or withdrawal without notice. Broker and/or Agent does not make any representation regarding hazardous waste, as defined by the Texas Solid Waste Disposal Act and the regulations adopted there under, or the United States Environmental Protection Agency regulations or disposal or any other hazardous or toxic substance in or on the property; or the Endangered Species Act of 1973; or for live oak decline, oak wilt, or any other natural phenomena.



2424 E MAIN ST.,
GATESVILLE, TX 76528
www.GoreGroupTexas.com



Bring the Horses,
Bring the Dogs!



230 Private Road 4151
Clifton, TX 76634
\$255,000

Text 'PROPID 370448' to 46786

GORE REAL ESTATE GROUP
2424 E. Main Street, Gatesville, TX 76528
254-248-0809 ~ 254-206-0915
www.GoreGroupTexas.com

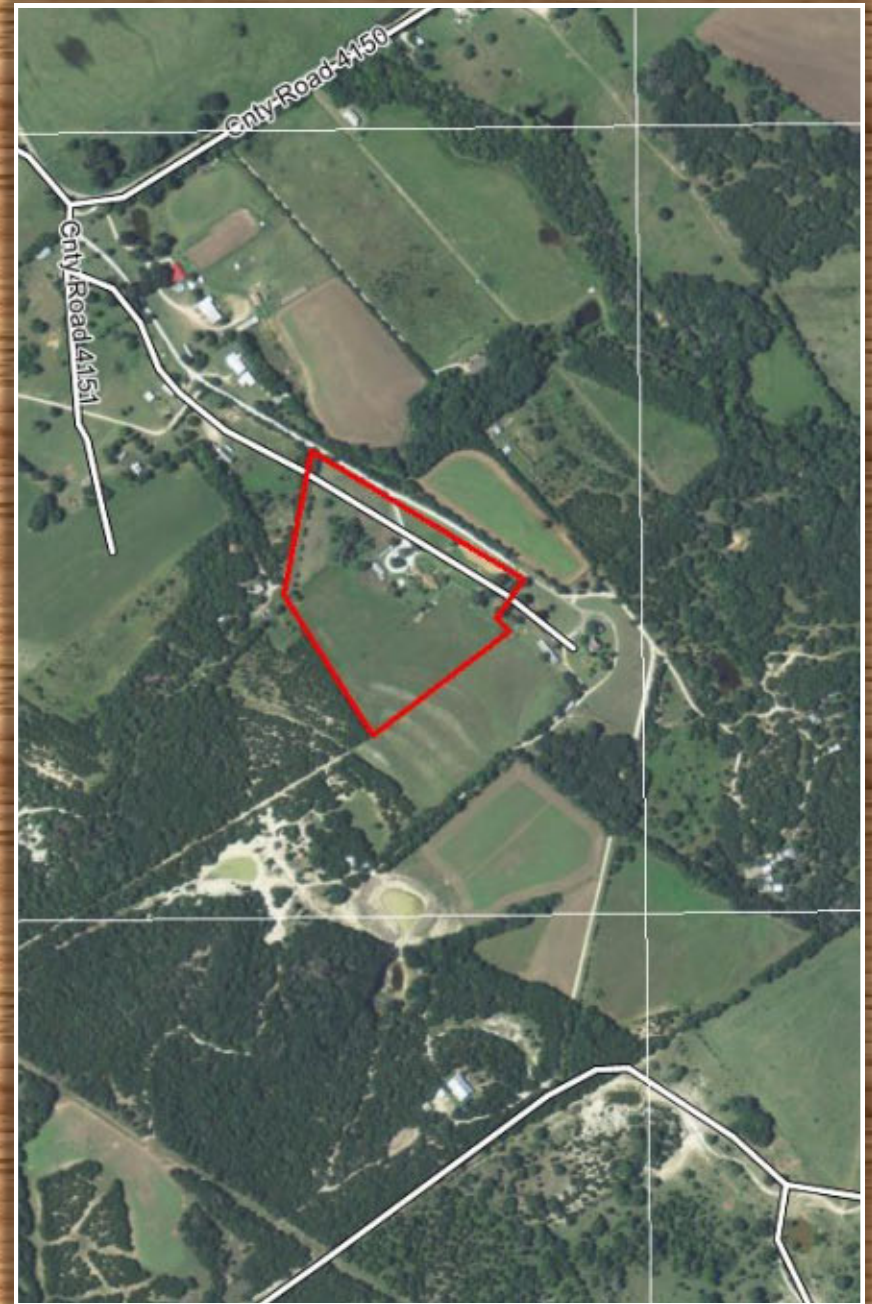


**Barn and
Workshop
Feature Both
Electric And
Water!**



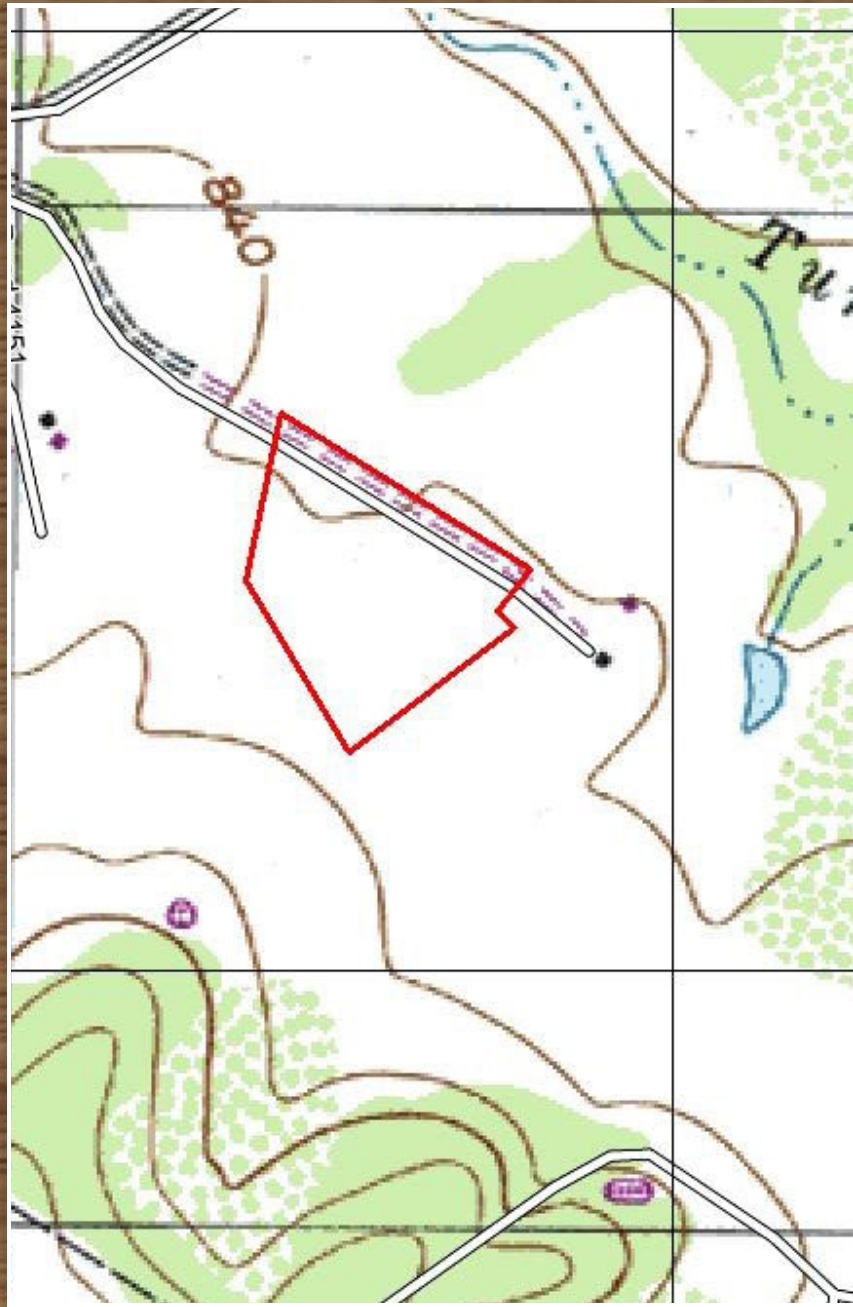
**6 Dog Kennels
Calf Roping Arena
Storage Buildings**

Aerial Map

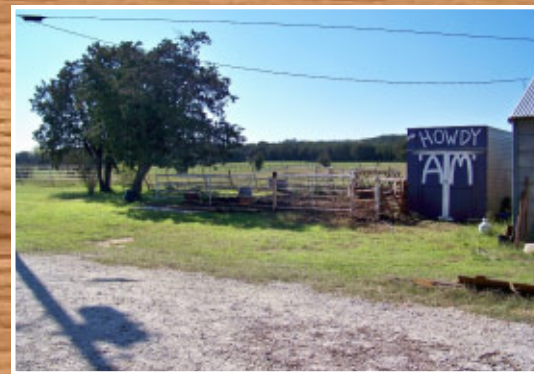


Boundary Lines Are An Approximation And Are Not Exact

Topographical Map



Boundary Lines Are An Approximation And Are Not Exact



Property Information Overview

Acreage.....	12.58 Acres
Location.....	230 PR 4151 Clifton, TX 76634
Price.....	\$255,000
Exterior Features.....	Arena, Patio Open, Stable/Barn, Storage Building, Workshop
Trees.....	Hardwood, Shade Trees
Utilities.....	Co-Op Water, Gravel/Rock, Outside City Limits, Overhead Utilities, Private Road, Septic, Co-Op Electric
Fencing.....	Barbed Wire, Pipe
Taxes w/out Exemptions....	\$2,023
Distance from Houston.....	225 Miles
Distance from Austin.....	120 Miles
Distance from Dallas.....	105 Miles

Details of Home

Sq. Ft.....	2,515 Sq. Ft.
Bedrooms.....	3
Bathrooms	3
Additional Features.....	Granite Countertops, Custom Cedar Cabinets, Wet Bar, 2 Living Areas, 2 Fireplaces, Sunroom

Directions: FM 219 towards Cranfills Gap, Right on Cr 4150. Go two miles and take a left on PR 4151. House is on the right, look for signs.



**There are three cross
fenced pastures for
horses or cattle.**

**The rustic den
features a gorgeous
wet bar along with a
rock fireplace and a
full guest bath.**



**In the kitchen you will
find a breakfast bar,
an island, one dining
area, and granite
countertops.**

