

60 Acres M/L Lucas County, Iowa



Price: \$210,000

Description: Presenting 60 Acres m/l south of Derby in Lucas County. This property has a great combination of tillable acres and pasture. 48 Acres m/l Cropland per FSA with a weighted average CSR or 41.4 (CSR2 55.9) of which approximately 30 acres are currently in row crop production. Located on the east side of Highway 65, in Section 34 of Union Township, Lucas County, IA.

Farm Program Information:

48.08 Total Cropland

Corn: 23.1 Base Acres with a DY and CC Yield of 95.

Beans: 6.9 Base Acres with a DY and CC Yield of 23.

Directions: From Derby, IA: Take Highway 65 South to Watrous Street (Lucas/Wayne County Line). Take Watrous east. Watrous street dead ends at the property.

Taxes: \$614.00

Kenny Herring

P: 515.961.0247

C: 515.783.8718

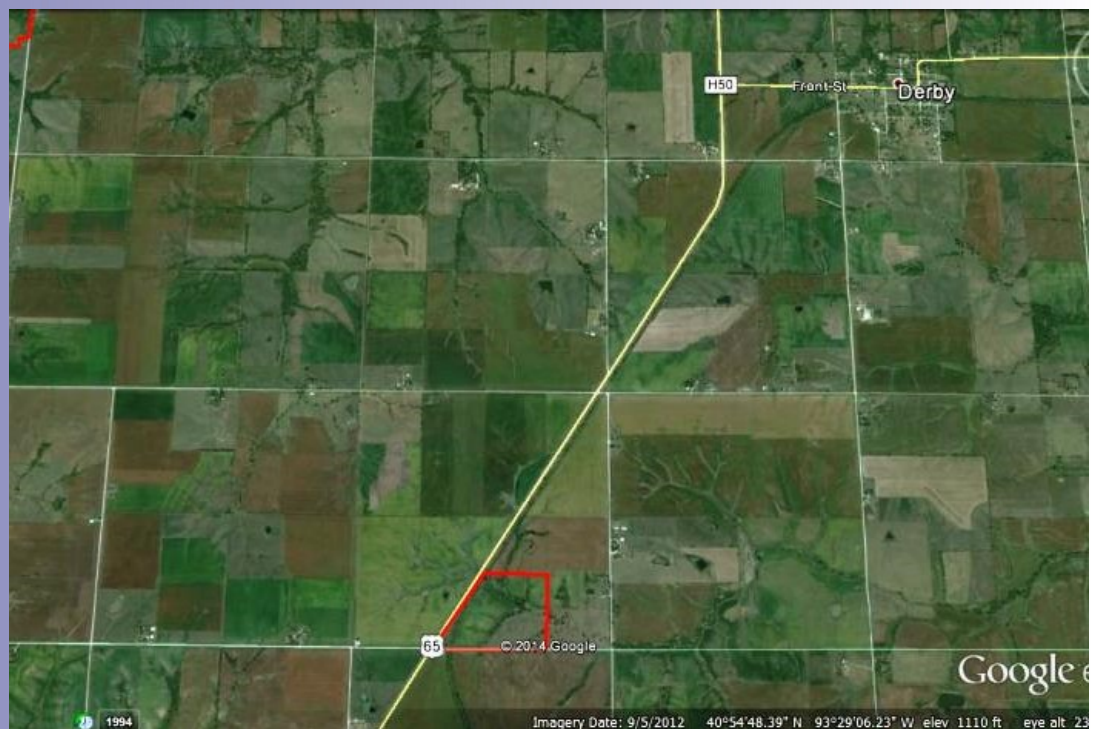
Kenny@PeoplesCompany.com

Adam Curran

P: 515.961.0247

C: 641.203.2931

Adam@PeoplesCompany.com



Additional information can be found on our website: **LISTING # 12051**

© 2014 Peoples Company We obtained the information above from sources we believe to be reliable. However, we have not verified its accuracy and make no guarantee, warranty or representation about it. It is submitted subject to the possibility of errors, omissions, change of price, rental or other conditions, prior sale, lease or financing, or withdrawal without notice. We include projections, opinions, assumptions or estimates for example only and they may not represent current or future performance of the property. You and your tax and legal advisors should conduct your own investigation of the property and transaction.