

Mobile: 601.347.3622  
ariser@4cornerprop.com  
www.mslandpro.com

 **4 CORNER**  
PROPERTIES • LLC  
601.952.2828 • www.4cornerprop.com

Call Alex Today!  
Office: 601.952.2828  
Fax: 601.952.2829

- 1995 Triple Wide Trailer w/ 5BR and 2BA
- 10 +/- Acres of Pasture/Ag Land
- 50+/- Acres of 14-15 Y.O. Pine and Scattered Hardwoods
- Adjoining Corn and Soy Bean Fields for Deer Food Source
- 3 Established Food Plots
- Internal Roads
- Tractor Shed



**\$175,000**

**60 +/- Acres in Scott County**

*Turn Key Deal with Triple Wide Trailer, Internal Roads, Food Plots*



*Looking for a Turn Key Hunting Tract in an Excellent Location?* This tract offers everything that your family is looking for. This tranquil tract offers excellent hunting, 4 Wheeler Riding, Pasture/Ag Land, food plots and timber. This tract is a year round tract with great deer and turkey hunting and is only 19 miles for the Ross Barnett Reservoir allowing you to bring your boat and enjoy a day on the water fishing or water skiing. There are 3 established food plots on this tract with excellent timber potential. The adjoining land owners farm for corn and soy bean keeping a great food source for your deer. Come and check out this once in a lifetime opportunity and set your very own private showing.



**Alex Riser**  
Certified Land Specialist  
4 Corner Properties, LLC  
855 S. Pear Orchard Rd. Ste. 401  
Ridgeland, MS 39157







**Alex Riser, CLS**  
**4 Corner Properties, LLC**  
**855 S. Pear Orchard Rd. Ste. 401**  
**Ridgeland, MS 39157**  
**[www.mslandpro.com](http://www.mslandpro.com)**







Aerial Map



**Alex Riser, CLS**  
**4 Corner Properties, LLC**  
**855 S. Pear Orchard Rd. Ste. 401**  
**Ridgeland, MS 39157**  
**[www.mslandpro.com](http://www.mslandpro.com)**







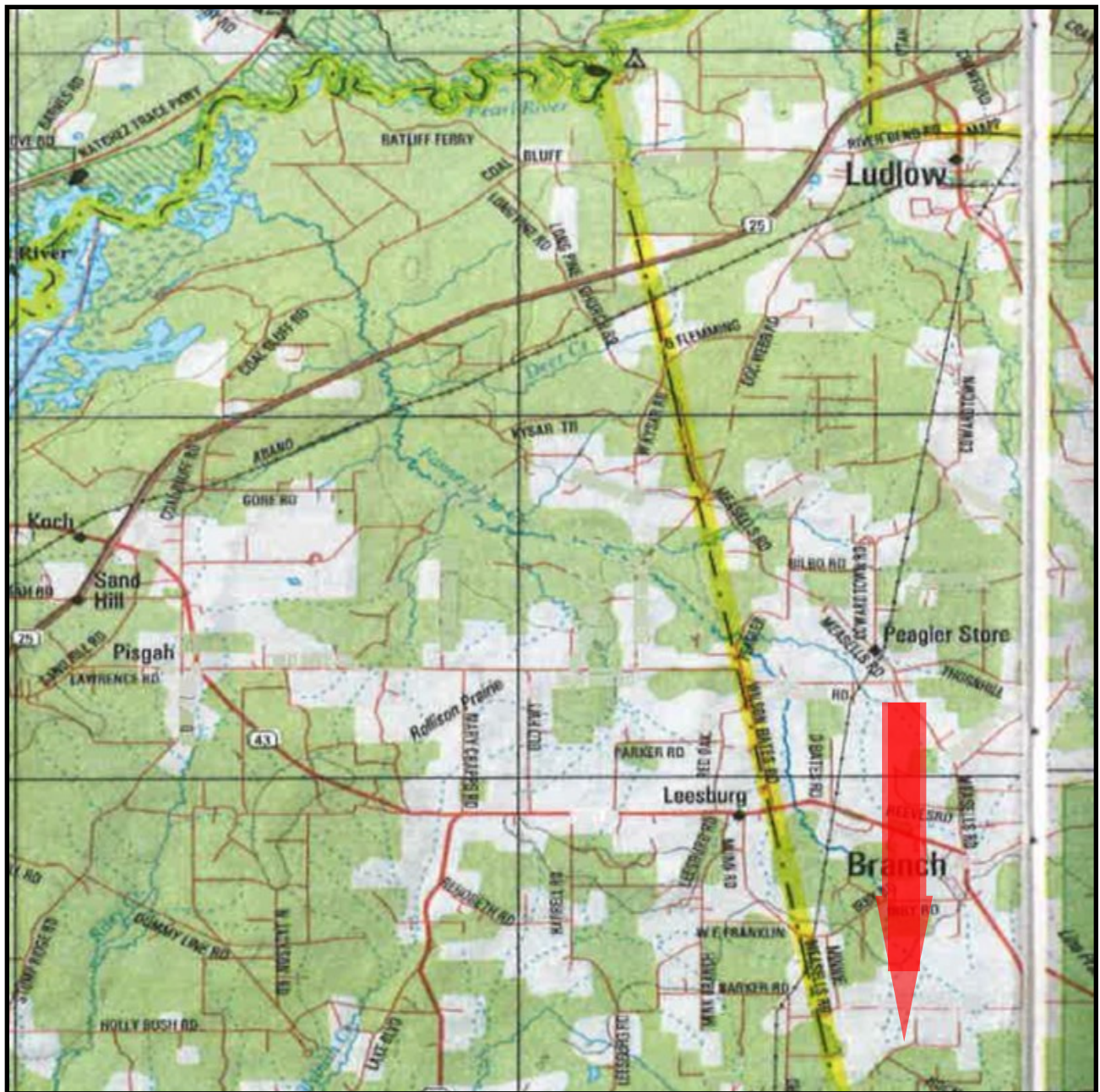
Topo Map



**Alex Riser, CLS**  
**4 Corner Properties, LLC**  
**855 S. Pear Orchard Rd. Ste. 401**  
**Ridgeland, MS 39157**  
**[www.mslandpro.com](http://www.mslandpro.com)**







### Directional Map

From Jackson, At Exit 94 Take I-20 towards Meridian. Go 30.1 miles on I-20 and take exit 77 onto MS-13 towards Morton. Go 0.3 miles and turn left onto HWY 13 South toward Morton. Continue 3.5 miles and turn left onto MS-481. Go 3.4 miles and turn left onto Line Prairie Rd. Go 2 miles and turn left onto D. Williams Rd. and property will be on your right. Look for Sign!



**Alex Riser, CLS**  
**4 Corner Properties, LLC**  
**855 S. Pear Orchard Rd. Ste. 401**  
**Ridgeland, MS 39157**  
**[www.mslandpro.com](http://www.mslandpro.com)**

