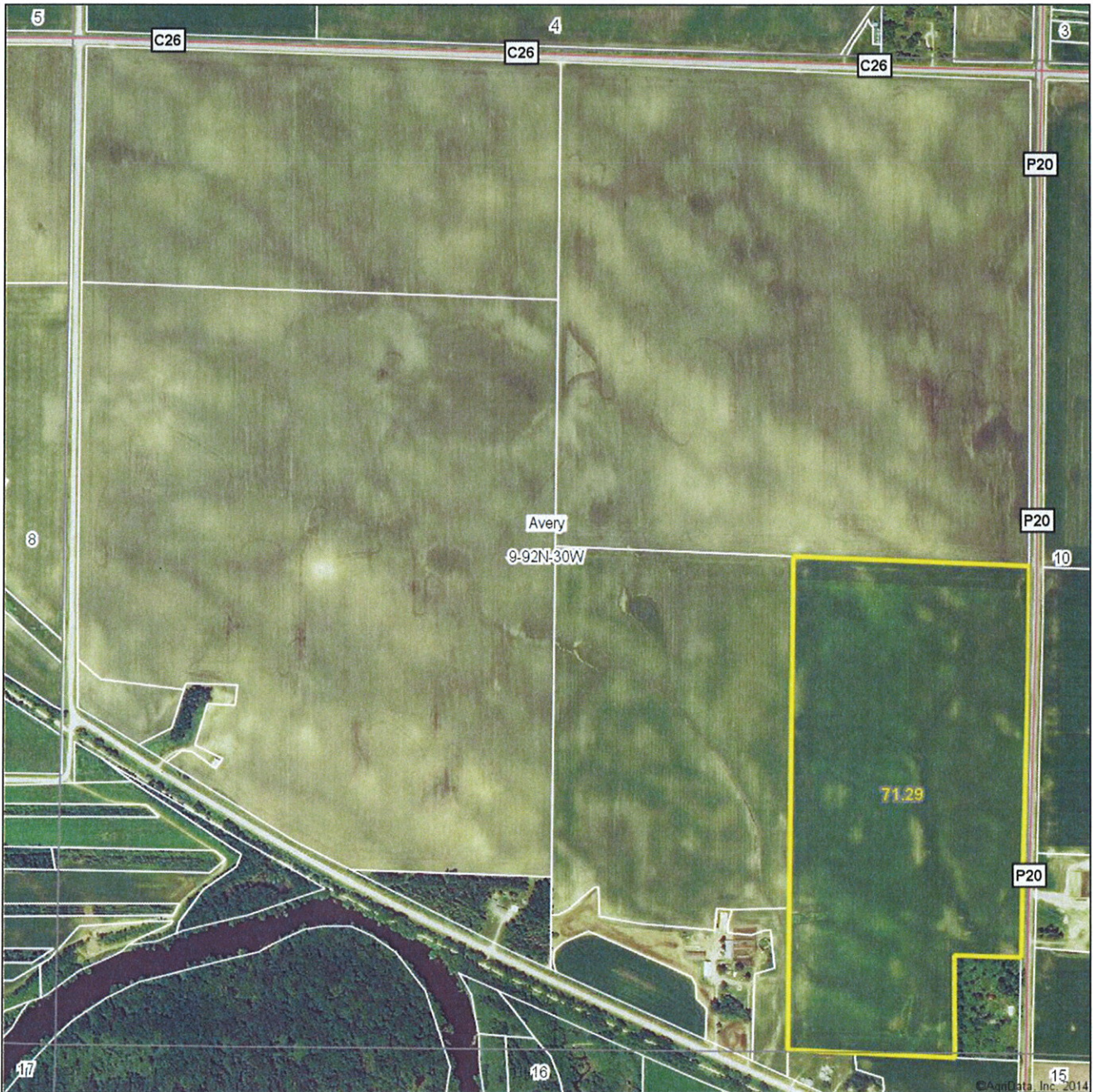


Aerial Map



© AgriData, Inc. 2014

map center: 42° 47' 50.43, 94° 23' 37.47
scale: 9542

9-92N-30W
Humboldt County
Iowa

Maps Provided By:

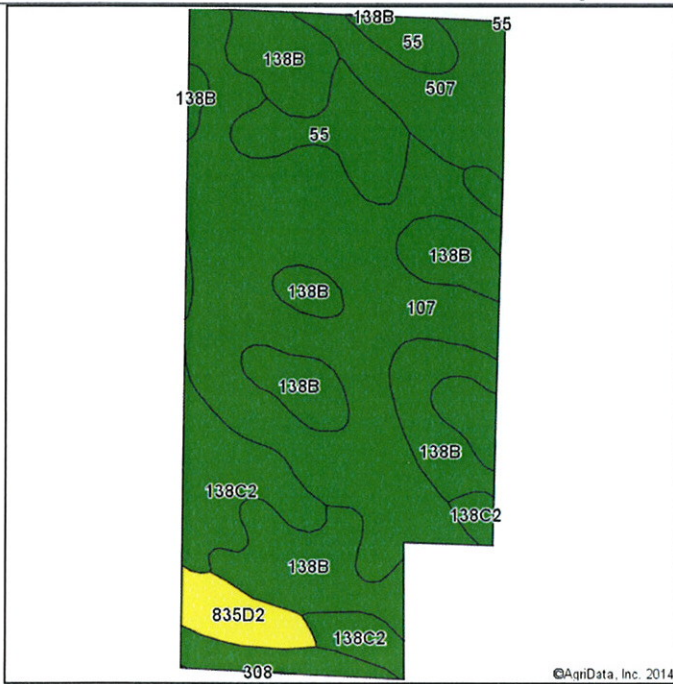
CUSTOMIZED ONLINE MAPPING
© AgriData, Inc. 2014 www.AgriDataInc.com



5/1/2014

Field borders provided by Farm Service Agency as of 5/21/2008. Aerial photography provided by Aerial Photography Field Office.

Soils Map-CSR2



Soils Version
latest








State: **Iowa**
 County: **Humboldt**
 Location: **9-92N-30W**
 Township: **Avery**
 Acres: **71.29**
 Date: **5/1/2014**



Maps Provided By:

 CUSTOMIZED ONLINE MAPPING
 © AgriData, Inc. 2014 www.AgriDataInc.com

Soils data provided by USDA and NRCS.

Area Symbol: IA091, Soil Area Version: 18							
Code	Soil Description	Acres	Percent of field	**CSR2 Legend	Non-Irr Class	CSR2**	CSR
107	Webster silty clay loam, 0 to 2 percent slopes	30.58	42.9%		llw	89	83
138B	Clarion loam, 2 to 6 percent slopes	18.14	25.4%		lle	90	80
138C2	Clarion loam, 5 to 9 percent slopes, moderately eroded	6.95	9.7%		llle	82	63
507	Canisteo clay loam, 0 to 2 percent slopes	5.65	7.9%		llw	88	78
55	Nicollet loam, 1 to 3 percent slopes	5.62	7.9%		l	88	88
835D2	Storden-Omsrud complex, 9 to 14 percent slopes, moderately eroded	2.43	3.4%		llle	43	46
27B	Terril loam, 2 to 5 percent slopes	1.92	2.7%		lle	90	85
Weighted Average						86.9	79.1

**IA has updated the CSR values for each county to CSR2.

Field borders provided by Farm Service Agency as of 5/21/2008. Aerial photography provided by Aerial Photography Field Office.