

The History

Dr. John W. Lockhart

Had a vision . . .

"THE LOCKHART"



In the early 1800's, young John Lockhart left Alabama with his family, traveled to Texas and settled in the small community of Washington-on-the Brazos, a.k.a. the Birthplace of Texas. Perhaps it was here that John first met General Sam Houston, the man on whom history bestowed the title "Father of Texas", and who became a life-long friend of John Lockhart.

Upon returning from medical college, John practiced medicine in Chappell Hill, purchased 1,000 acres of land and in 1850 built the Lockhart Plantation home. Sam Houston was a frequent guest in the Lockhart home which today boasts a bedroom known as "Sammy's Room".



General Sam Houston

The Lockhart thrived as a cotton and corn plantation. It featured a blacksmith shop, cotton gin, and commissary. The great Galveston hurricane of 1900 seriously damaged the Lockhart home and she lay in disrepair until 1961 when Mr. & Mrs. L. E. Deats of Houston purchased the property and restored this Greek revival masterpiece to her former elegance. Today the Lockhart remains a treasured piece of Texas history.

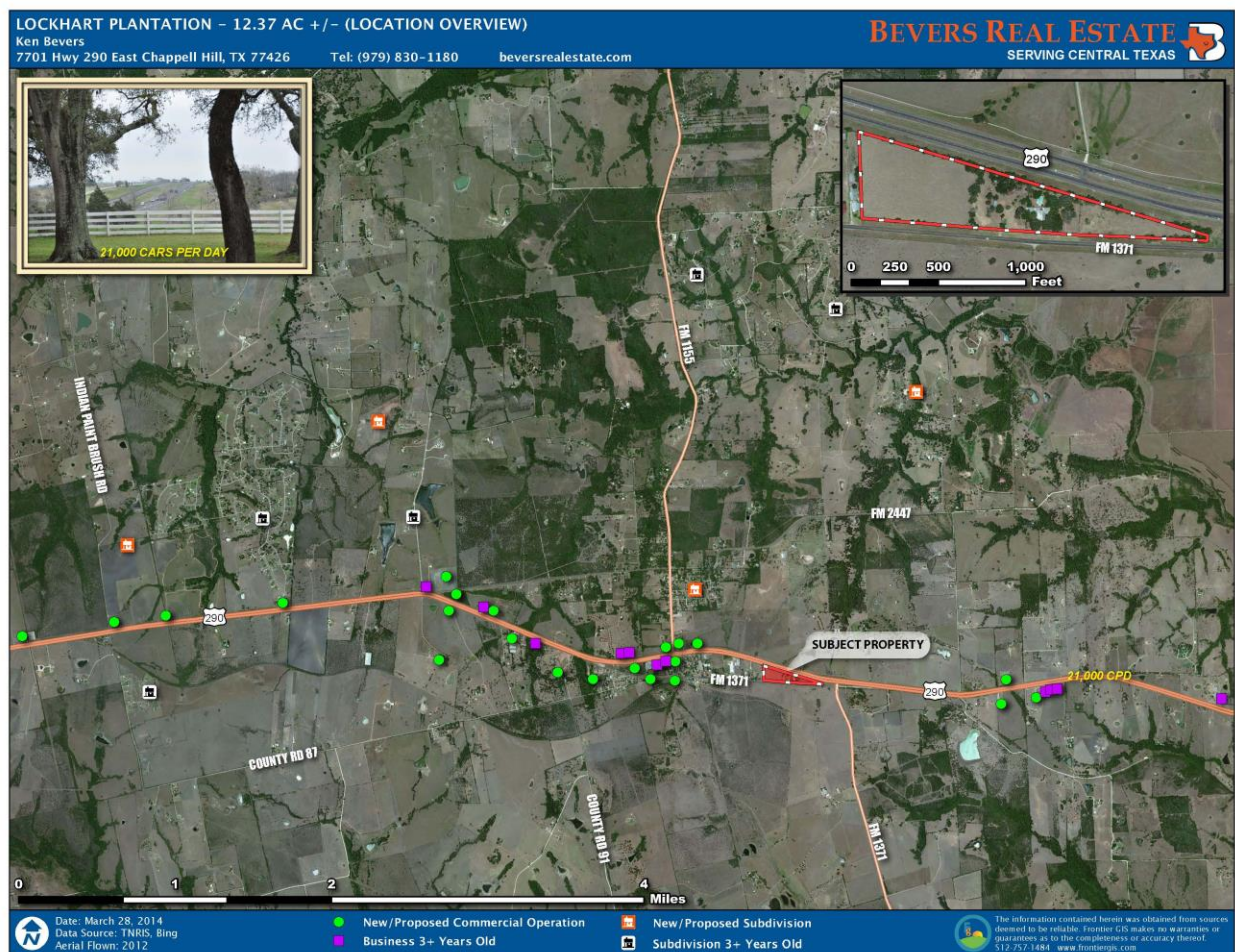
The Location

Located high on a bluff where U.S. Highway 290 makes a gentle swing from its dead ahead trajectory, the Lockhart can be seen for miles, ideal for a property requiring high traffic exposure. Highway 290 is fast developing as a continuous artery from Houston to Chappell Hill (the first traffic light from the 610 Loop), providing an easy drive for commuters. They are coming in droves and for good reason. Once discovered to be under an hour from West Houston, the gentle hills and rolling green pastures with scattered farm ponds excite the eye and capture the heart.



Affording all the amenities found in the city, this country way of life has become a magnet for young families and retirees. For many folks it's an easy commute from the bedroom community of Chappell Hill into Houston, and the atmosphere for raising a family makes it worth every mile. Business people and developers recognize this migration increase and the open spaces are filling in rapidly.

The Lockhart, located just under a mile from downtown Chappell Hill, sits in the middle of this growth area and its commercial possibilities are endless: imagine anything from a winery with vineyard, upscale B&B with wedding venue, restaurant, artisan village, or a lovely private home with an amazing history.



Wedged between the current U.S. 290 on the north and old highway 290 on the south, the Lockhart is bordered by 3/4 mile of road frontage for excellent access.

The Treasure

Dr. Lockhart's vision took shape on the canvas of 1,000 acres. Using lumber from native trees such as cedar, pine, ash, and black walnut, the home was crafted with meticulous detail. When the home was built the kitchen was in a separate building from the home to prevent a fire from destroying the whole house. However in 1969 when the restoration was done, a kitchen, great room, and connecting glassed in gallery were added.

In its 164-year life, only five families have owned this southern beauty. Imagine the happenings that this fine old lady has witnessed . . . weekends sprinkled with girls from The Chappell Hill Female College and young men from Chappell Hill's Soule University experiencing lots of fun, games, and fellowship. Sam Houston was surely not the only dignitary, but certainly the best known to bask in the hospitality that "Lady Lockhart" provided.

If you are a lover of Texas and its history, perhaps you will be compelled to be The Lockhart's next caretaker.