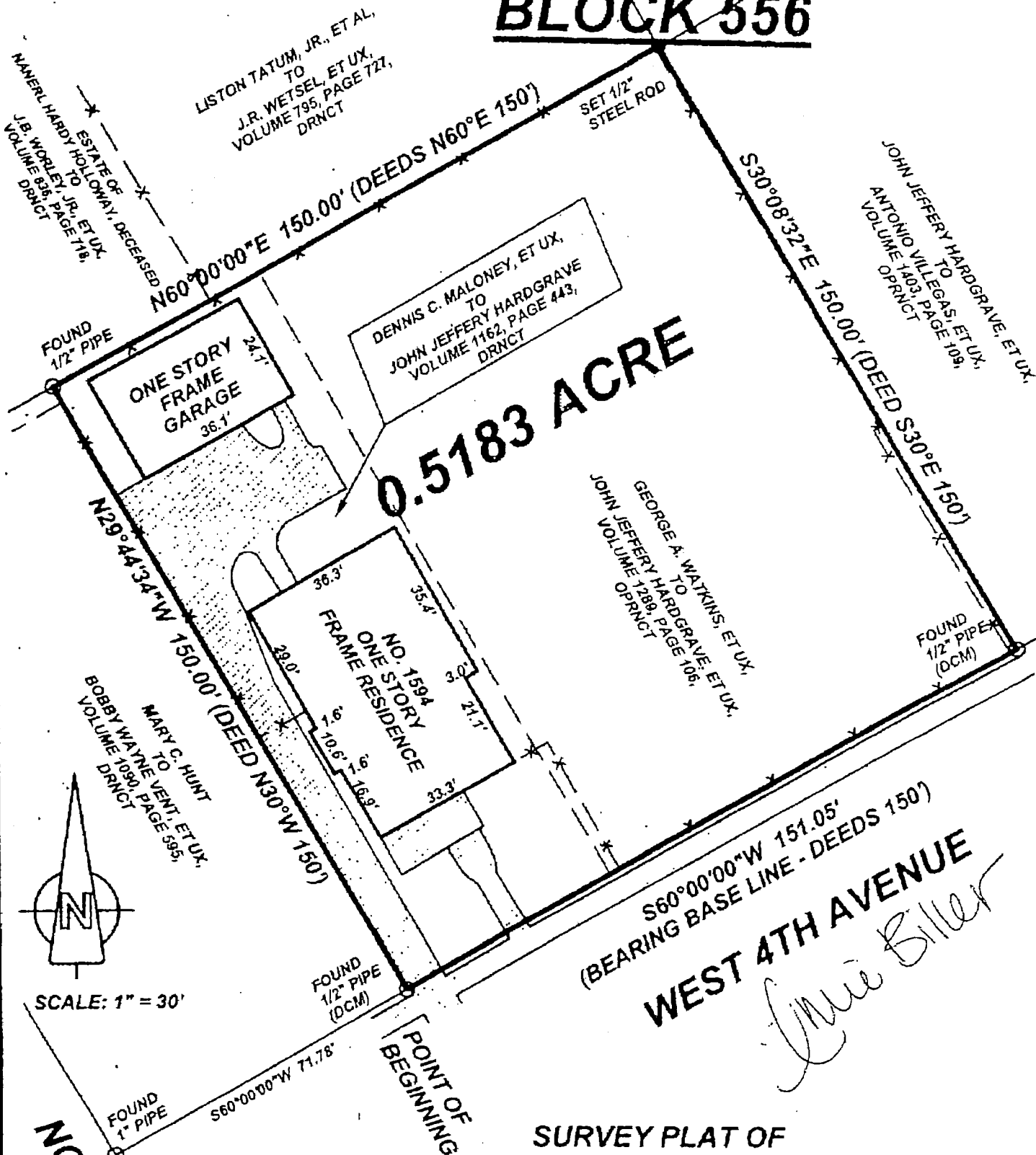


(DCP) = DIRECTIONAL CONTROL MONUMENT

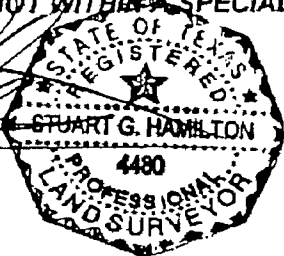
BLOCK 556



**SURVEY PLAT OF
0.5183 ACRE
IN
BLOCK 556, CITY OF CORSICANA,
NAVARRO COUNTY, TEXAS,
ACCORDING TO THE OFFICIAL MAP OF
CITY OF CORSICANA, NAVARRO COUNTY, TEXAS
(SEE ATTACHED FIELD NOTES)**

I DECLARE THAT THIS PLAT IS THE REPRESENTATION OF AN ACTUAL AND ACCURATE SURVEY MADE ON THE GROUND ON THE 5TH DAY OF OCTOBER 2001. THERE ARE NO VISIBLE ENCROACHMENTS, PROTRUSIONS OR EASEMENTS, UNLESS SHOWN HEREON. THE BEARINGS RECITED HEREON ARE BASED ON RECORD DEEDS. ACCORDING TO THE FEDERAL EMERGENCY MANAGEMENT AGENCY, FLOOD INSURANCE RATE MAP, COMMUNITY PANEL No. 480498-0005 A, DATED: AUGUST 27, 1981, FOR CITY OF CORSICANA, NAVARRO COUNTY, TEXAS, THIS TRACT IS NOT WITHIN A SPECIAL FLOOD HAZARD AREA INUNDATED BY 100-YEAR FLOOD.

STUART G. HAMILTON
REGISTERED PROFESSIONAL
LAND SURVEYOR NUMBER 4480



JOB NUMBER: E - 01372

**ELLIS ASSOCIATES
SURVEYORS**

PH. 972/937-7474 FAX 972/937-0331
212 NORTH COLLEGE WAXAHACHIE, TEXAS 75165