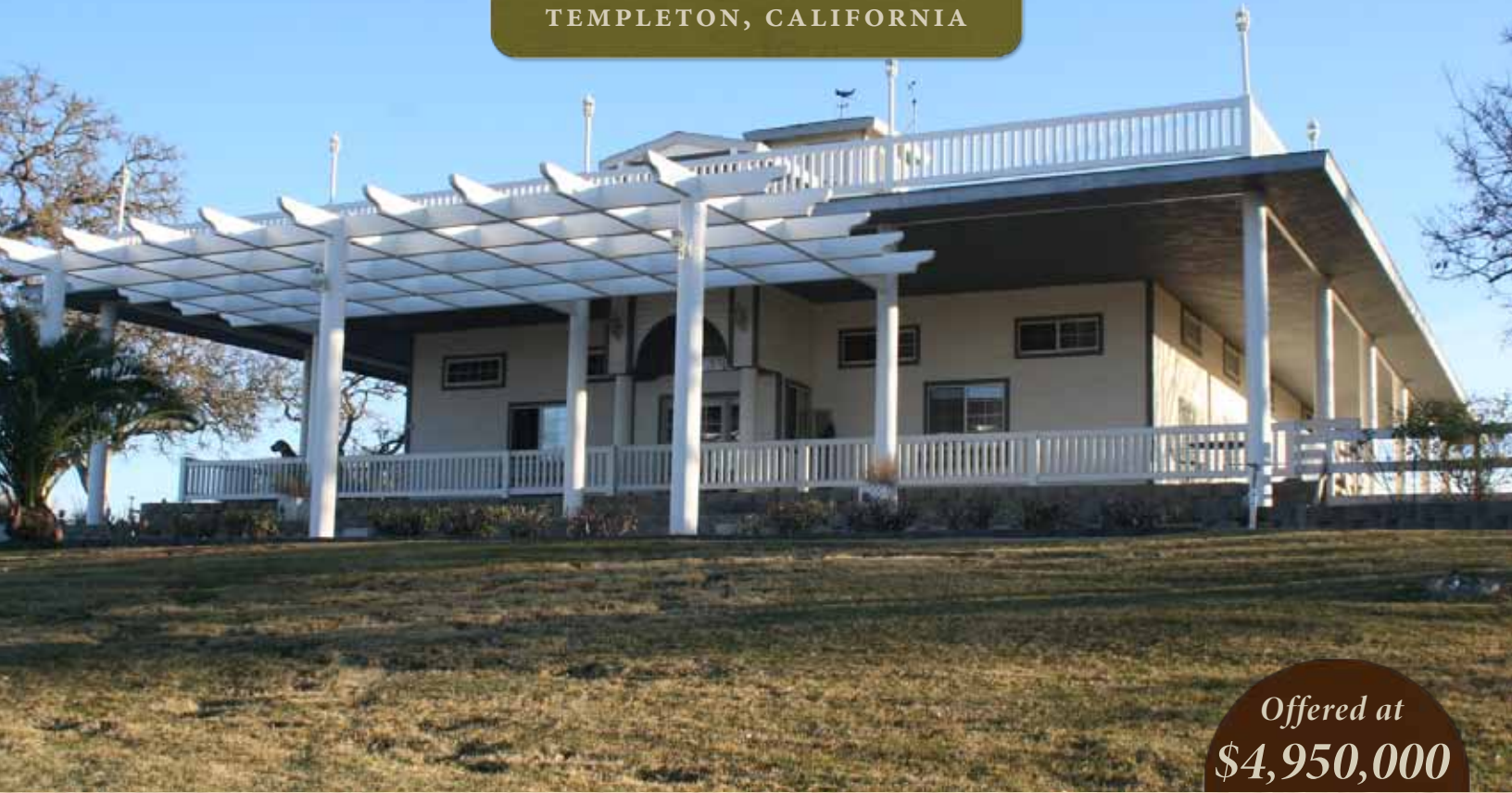


PAINE - Ranch -

TEMPLETON, CALIFORNIA



Offered at
\$4,950,000

Situated east of Templeton on El Pomar Drive in an area of ranches and vineyards, the 83.5± acre Paine Ranch is a stunning property with extensive improvements offering vast agricultural processing and manufacturing possibilities (subject to county approval). Complemented by a 6,600± square foot main house with a two-story, 4000± square foot garage and loft, 2,500± square foot second house, and 900± square foot pond house, the production facilities include numerous outbuildings and three large barns/shops comprising approximately 25,000± square feet under roof all equipped with 440 watt electrical. Water is supplied via a 100± gpm well with a 10HP submersible pump, a 350,000± gallon irrigation pond, and 40,000 gallons of fresh water storage for domestic and livestock use.



CLARK
COMPANY
RANCH REAL ESTATE



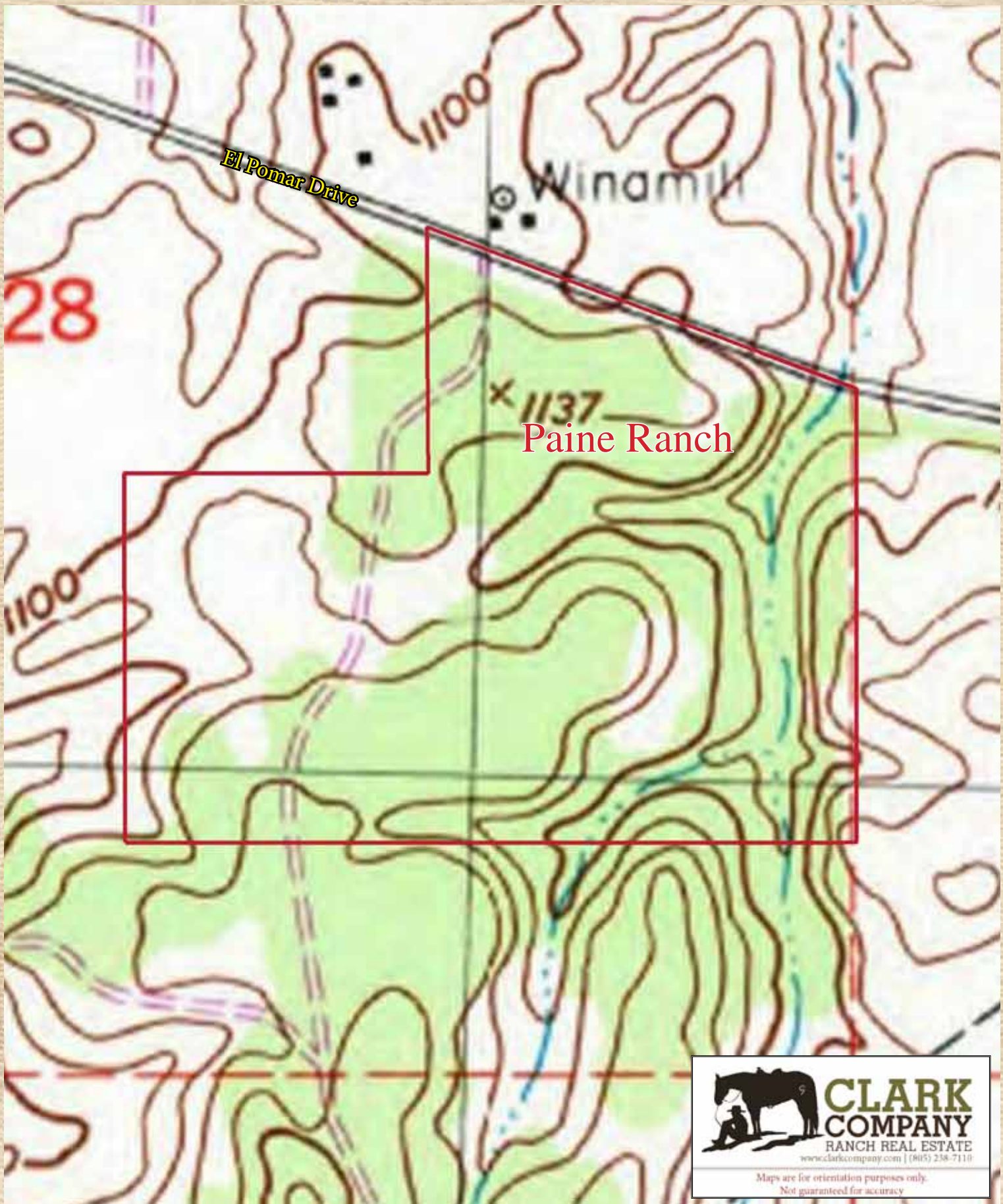
The Facts

- 83.5± acres east of Templeton with extensive improvements
- 6,600± square foot main house with a two-story, 4000± square foot garage
- 2,500± square foot second house, and 900± square foot pond house
- three large barns/shops comprising approximately 25,000± square feet under roof all equipped with 440 watt electrical
- 100± gpm well with a 10HP submersible pump, a 350,000± gallon irrigation pond, and 40,000 gallons of fresh water storage





PAINE
- **Ranch** - 6685 El Pomar Drive | Templeton, California 93465



THE ENCLOSED INFORMATION HAS BEEN OBTAINED FROM SOURCES THAT WE DEEM RELIABLE; HOWEVER, IT IS NOT GUARANTEED BY CLARK COMPANY AND IS PRESENTED SUBJECT TO CORRECTIONS, ERRORS, PRIOR SALE, CHANGES OR WITHDRAWAL FROM THE MARKET WITHOUT NOTICE.