

Mobile: 601.347.3622
ariser@4cornerprop.com
www.mslandpro.com



Call Alex Today!
Office: 601.952.2828
Fax: 601.952.2829

- 191 Surveyed Acres in Hinds County
- Excellent Road System Throughout
- Food Plots In Place w/ 1st Class Deer Stands and Feeders
- Turn Key Deal... Everything Stays!
- Managed for Outstanding White-tail and Turkey!
- Mature Hardwoods
- Creek Frontage
- Camper w/ Outhouse in Place!



191 ACRES IN HINDS COUNTY

Includes 1st Class Deer Stands, Camper, Feeders.... Everything Stays!

\$2,617/Acre



What a Tract! This tract is known for its first class deer and turkey hunting and has been managed that way! This tract features mature hardwoods and also you hardwoods showing great potential. This tract has been surveyed and borders Tallahalla Creek. There are several established food plots with 1st class box stands with excellent ladder stands in the hardwoods. Each food plot also includes Texas Feeders that stay with the property. This tract is only 27 miles from downtown Jackson and with the excellent internal roads you can be out of your office and in the stand in no time. This tract comes with a camper and custom built outhouse with a shower and toilet. This is the perfect tract for you and the family to come out stay in the camper and harvest that buck or gobbler and make memories hat will last for a lifetime! Don't miss this one because it offers everything that you have been looking for!



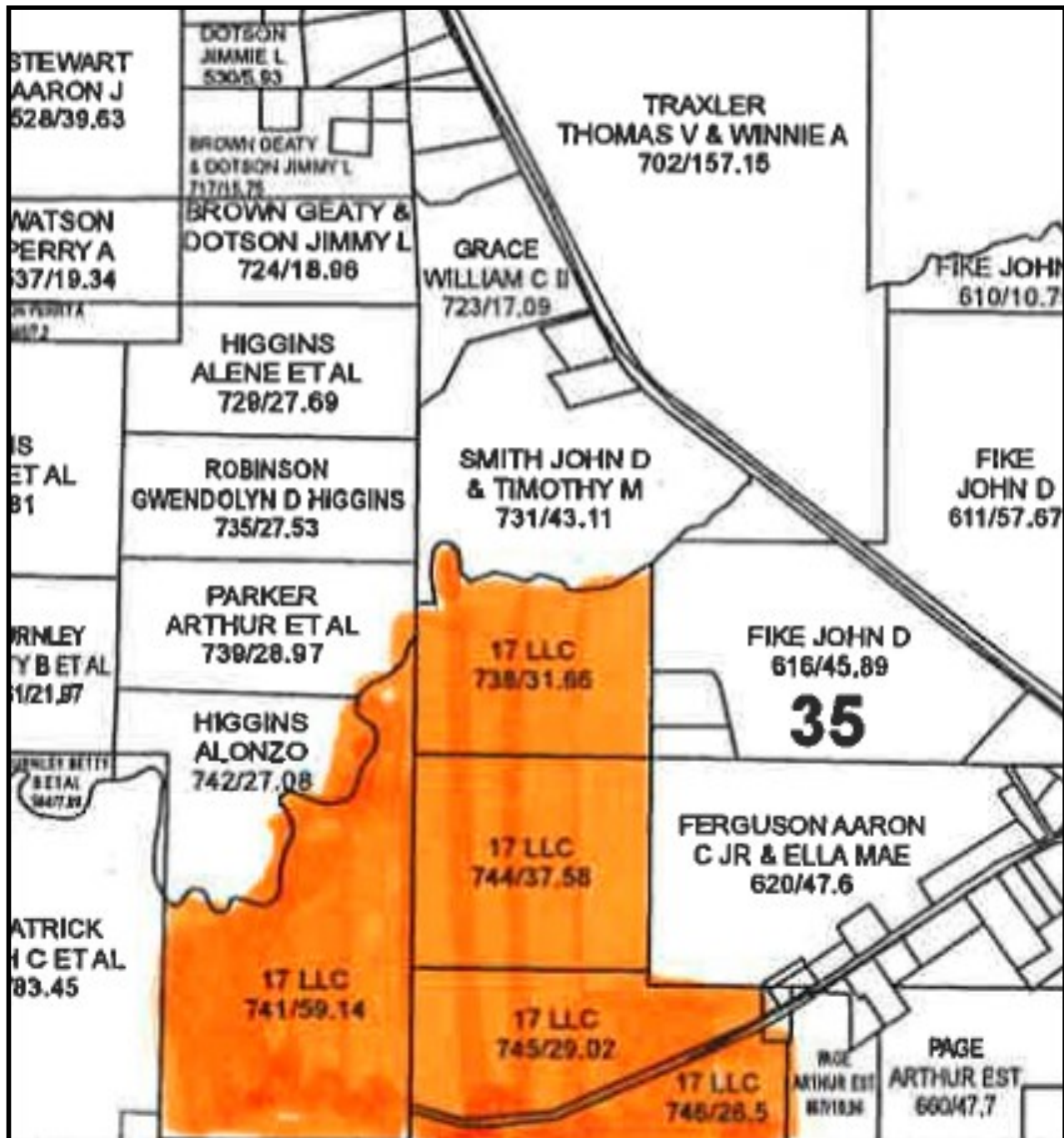
Alex Riser
Certified Land Specialist
4 Corner Properties, LLC
855 S. Pear Orchard Rd. Ste. 401
Ridgeland, MS 39157





Alex Riser, CLS
4 Corner Properties, LLC
855 S. Pear Orchard Rd. Ste. 401
Ridgeland, MS 39157
www.mslandpro.com



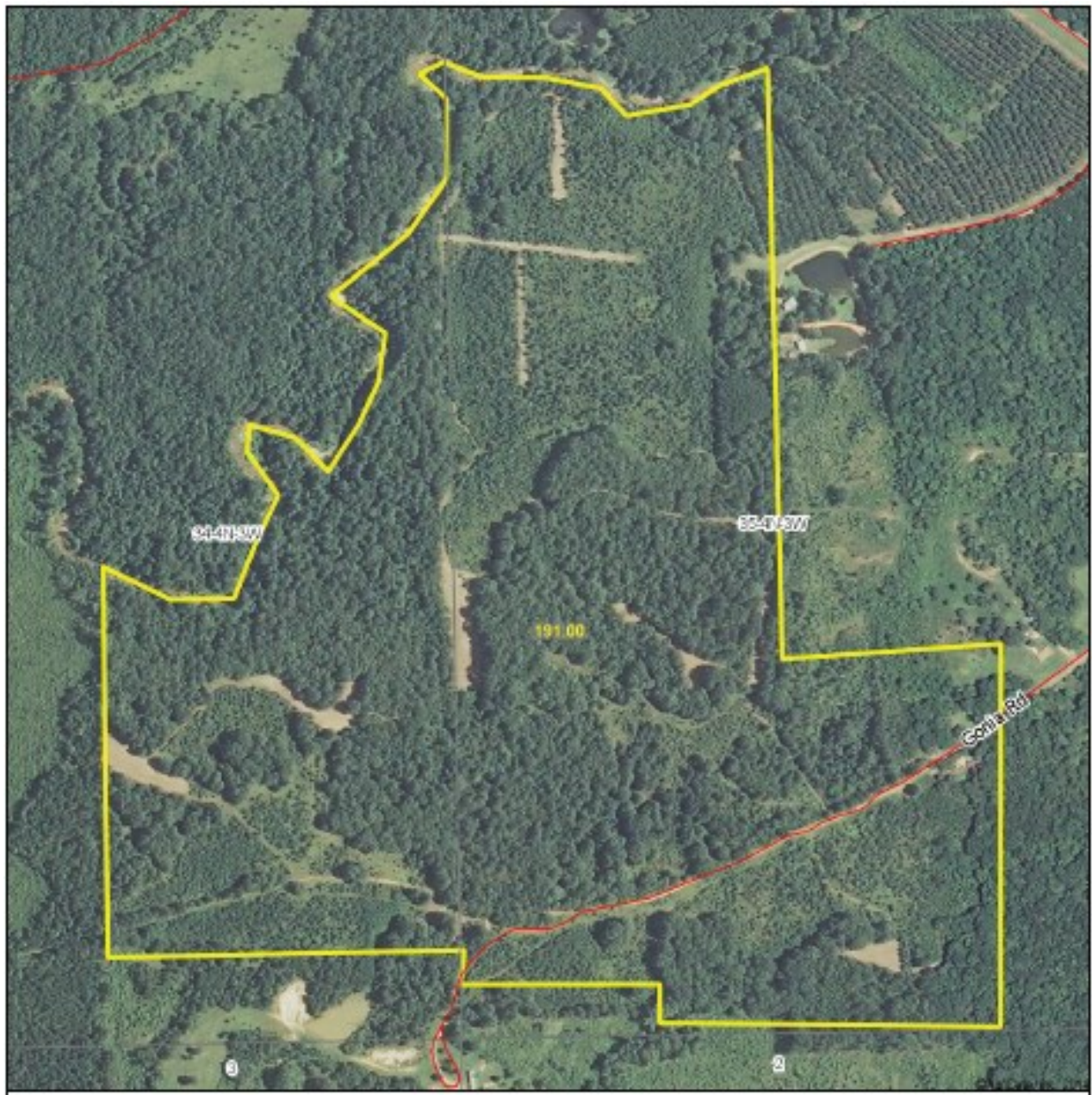


Ownership Map



Alex Riser, CLS
4 Corner Properties, LLC
855 S. Pear Orchard Rd. Ste. 401
Ridgeland, MS 39157
www.mslandpro.com



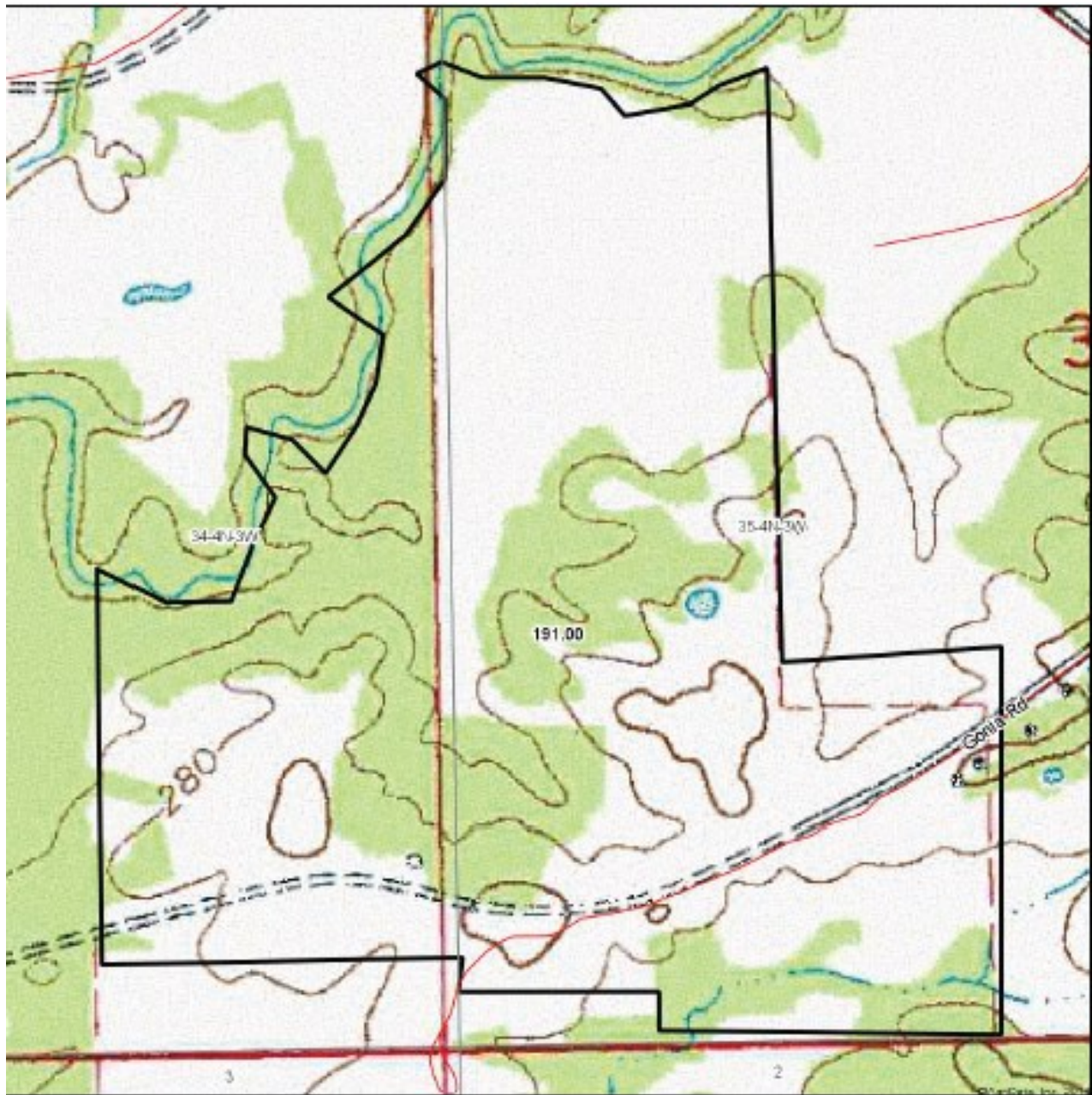


Aerial Map



Alex Riser, CLS
4 Corner Properties, LLC
855 S. Pear Orchard Rd. Ste. 401
Ridgeland, MS 39157
www.mslandpro.com



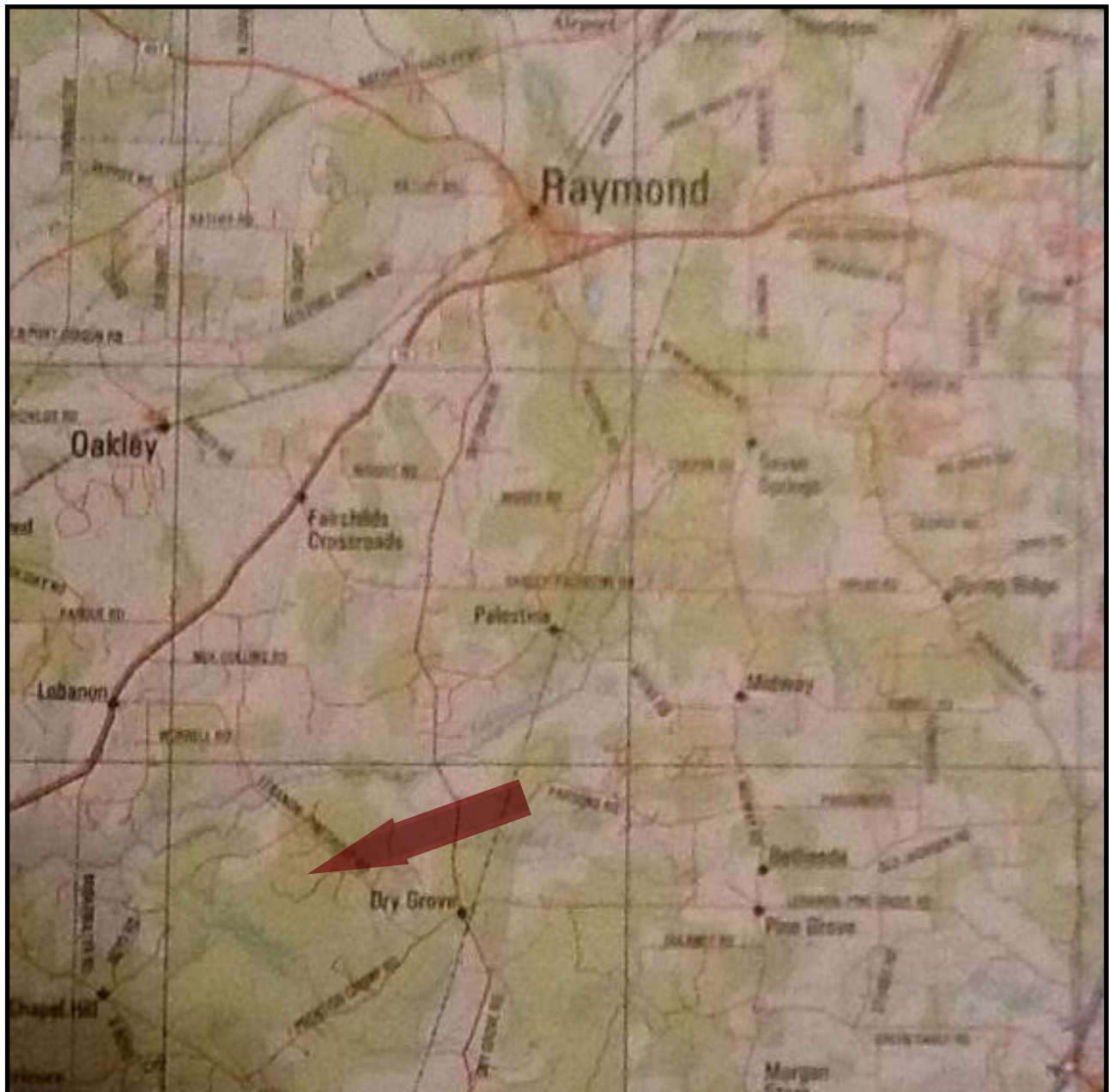


Topo Map



Alex Riser, CLS
4 Corner Properties, LLC
855 S. Pear Orchard Rd. Ste. 401
Ridgeland, MS 39157
www.mslandpro.com





Directional Map

Directions: At Exit 40A, take HWY 18 West towards Raymond. On HWY 18 Drive 18.1 miles then turn left onto Lebanon Pinegrove Rd. Drive 3.2 miles and turn right onto Gonja Rd. Drive to the end of Gonja Rd and you will enter onto the property.



Alex Riser, CLS
4 Corner Properties, LLC
855 S. Pear Orchard Rd. Ste. 401
Ridgeland, MS 39157
www.mslandpro.com

