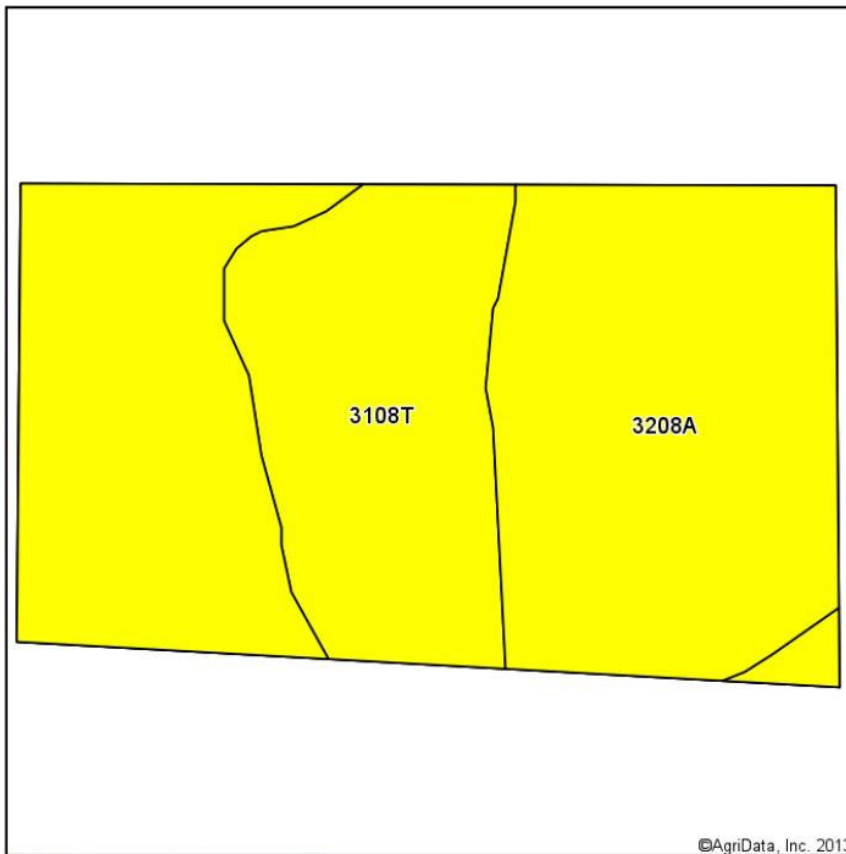
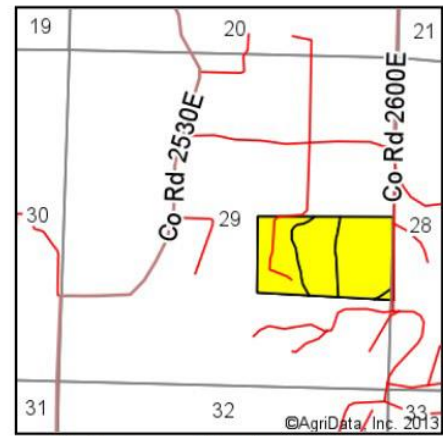


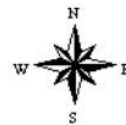
Soil Map



Soils data provided by USDA and NRCS.



State: **Illinois**
 County: **Wayne**
 Location: **29-2S-9E**
 Township: **Leech**
 Acres: **62.61**
 Date: **12/27/2013**



Maps Provided By:

 CUSTOMIZED ONLINE MAPPING
 © AgriData, Inc. 2013 www.AgriDataInc.com

Code	Soil Description	Acres	Percent of field	Il. State Productivity Index Legend	Corn Bu/A	Soybeans Bu/A	Wheat Bu/A	Crop productivity index for optimum management
3208A	Sexton silt loam, 0 to 2 percent slopes, frequently flooded	44.45	71.0%		157	50	63	116
3108T	Bonnie silt loam, sodic, 0 to 2 percent slopes, frequently flooded	18.16	29.0%		149	49	59	111
Weighted Average					154.7	49.7	61.8	114.5

Table: Optimum Crop Productivity Ratings for Illinois Soil by K.R. Olson and J.M. Lang, Office of Research, ACES, University of Illinois at Champaign-Urbana. Version: 1/2/2012 Amended Table S2 B811 (Updated 1/10/2012)

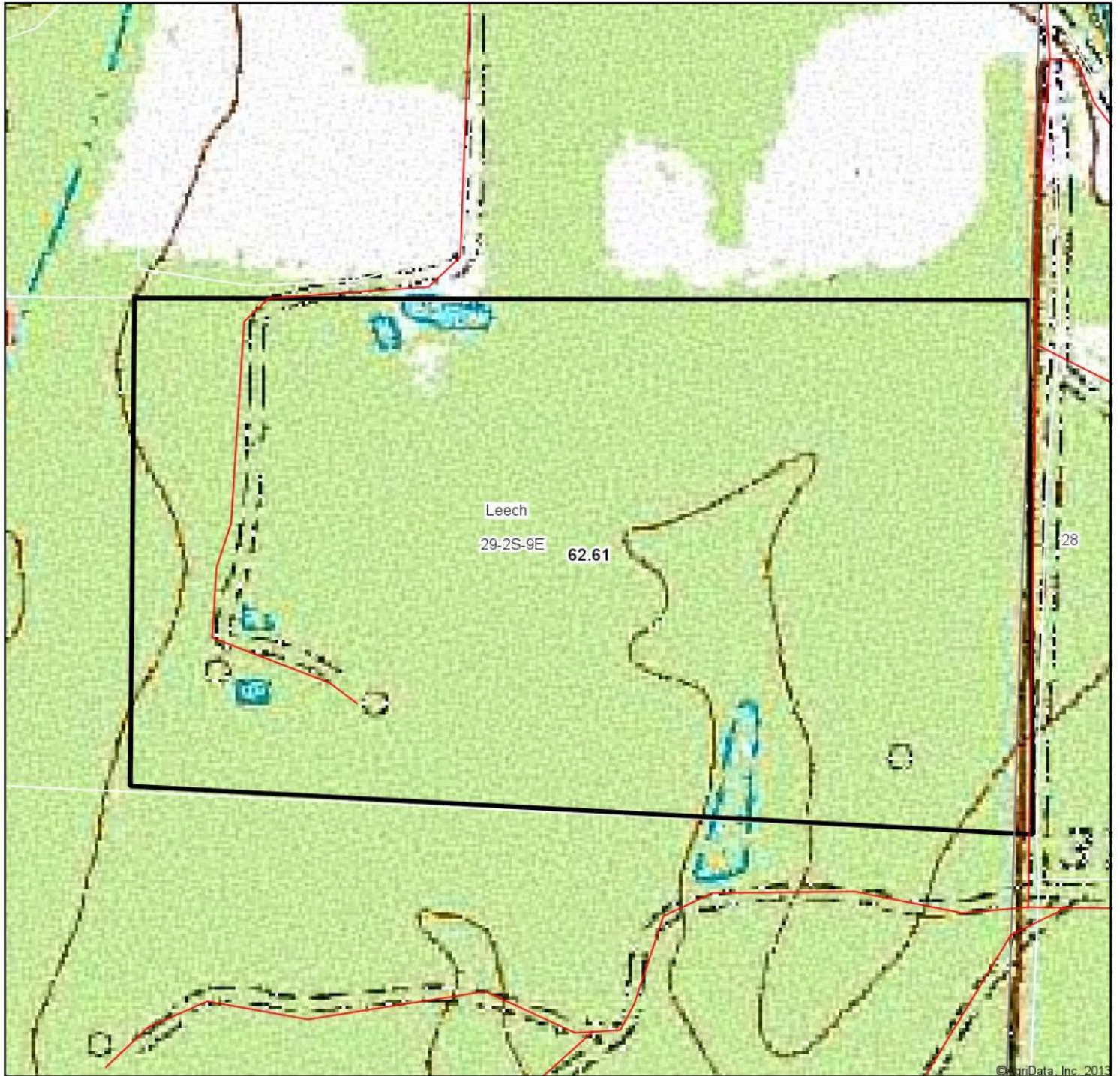
Crop yields and productivity indices for optimum management (B811) are maintained at the following NRES web site:

<http://soilproductivity.nres.illinois.edu/>

** Indexes adjusted for slope and erosion according to Bulletin 811 Table S3

Field borders provided by Farm Service Agency as of 5/21/2008. Aerial photography provided by Aerial Photography Field Office.

Topography Map

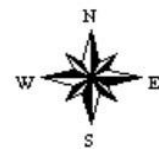


© AgriData, Inc. 2013

map center: 38° 19' 12.11, 88° 13' 35.9

scale: 4364

29-2S-9E
Wayne County
Illinois



12/27/2013

Maps Provided By:
 **surety**[®]
CUSTOMIZED ONLINE MAPPING
© AgriData, Inc. 2013 www.AgriDataInc.com

Field borders provided by Farm Service Agency as of 5/21/2008. Aerial photography provided by Aerial Photography Field Office.