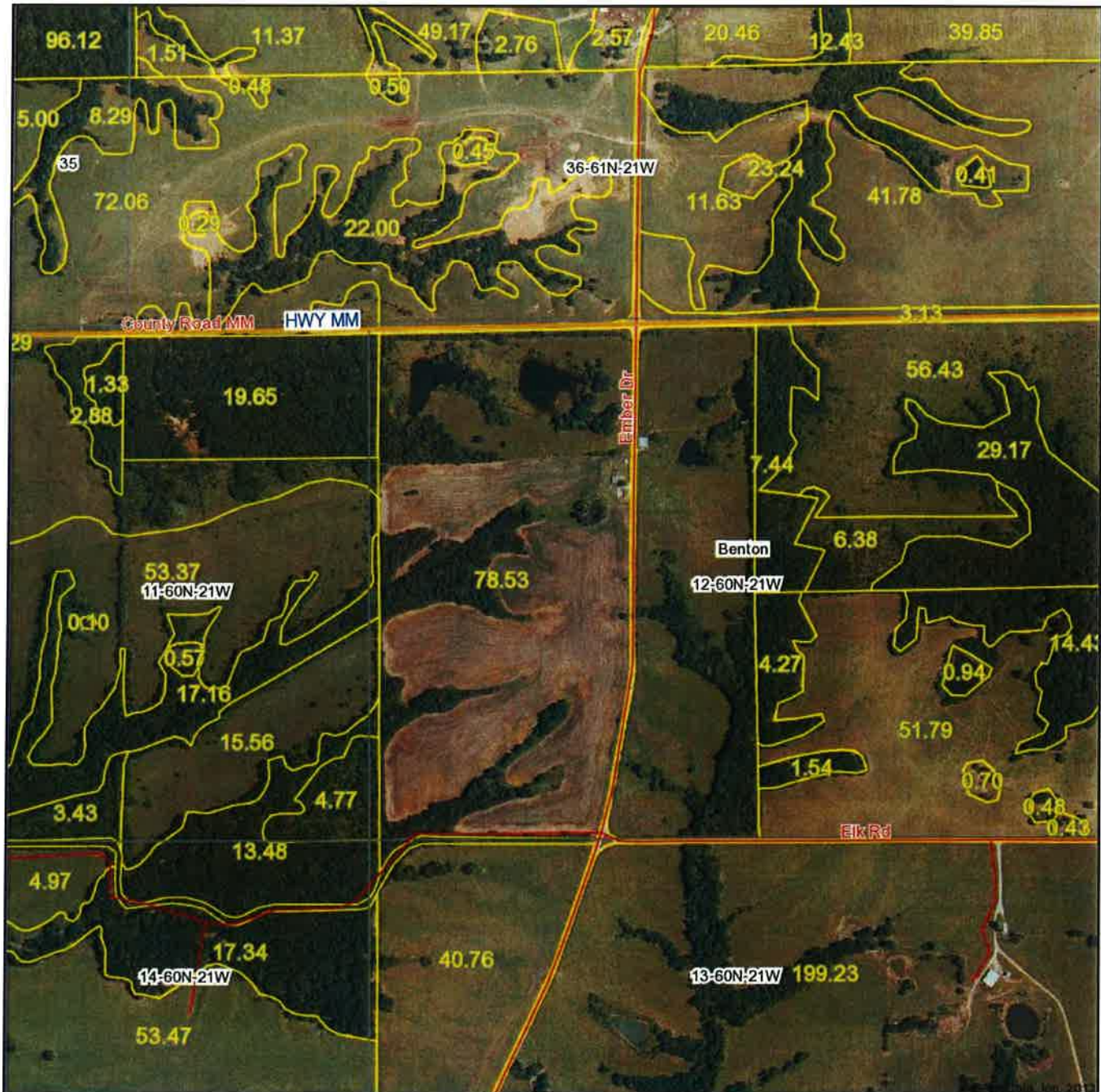


Aerial Map



United Country
Property
Solutions, LLC

Maps provided by:



©AgriData, Inc. 2013
www.AgriDataInc.com

12-60N-21W
Linn County
Missouri

map center: 40° 1' 56.69, 93° 12' 26.67
scale: 9867



8/19/2013

Field borders provided by Farm Service Agency as of 5/21/2008. Aerial photography provided by Aerial Photography Field Office.