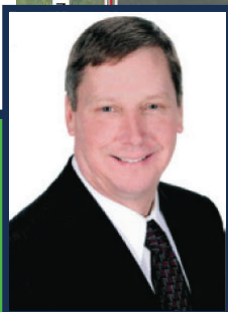
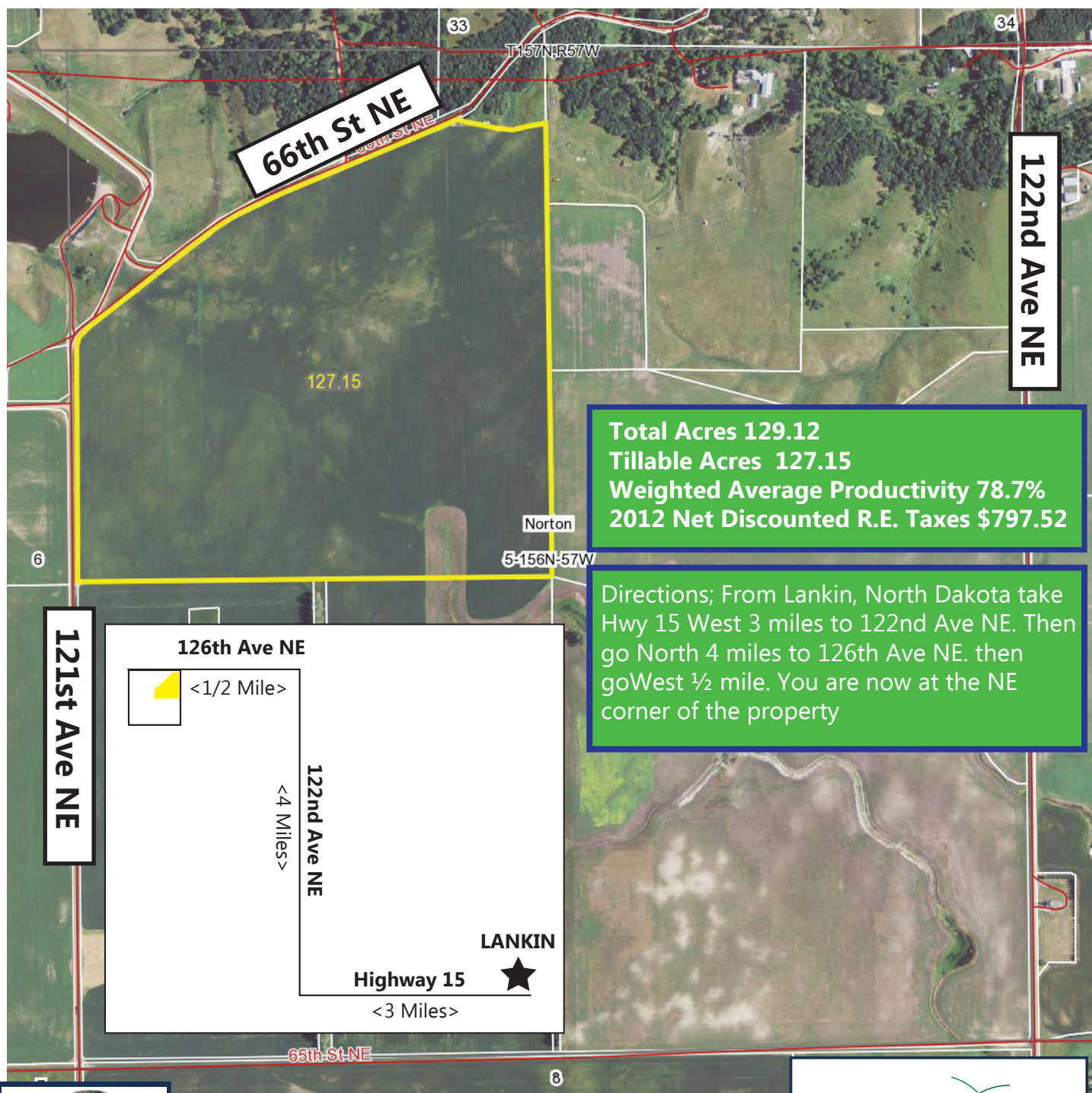


Walsh County North Dakota farm Land For Sale

NW ¼ less Tract 129.12 Acres Section 5-156-57

Approximately 129.12 Acres



*All information contained herein is believed to be true but should be verified to the buyer's satisfaction in case of error, typographical or otherwise. ALL information is subject to change without further notice.

Steve D. Johnson
Real Estate Broker
Auctioneer License #976
701-799-5213
steve@johnsonauctionandrealty.com

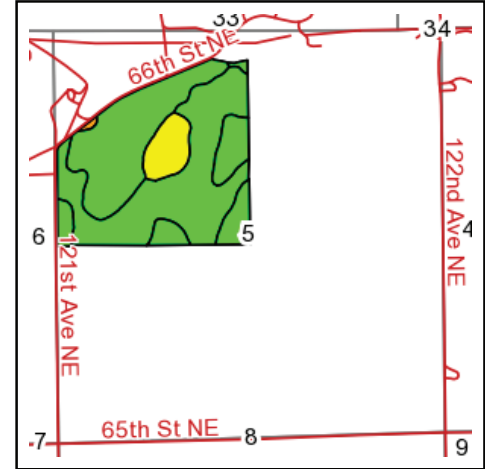
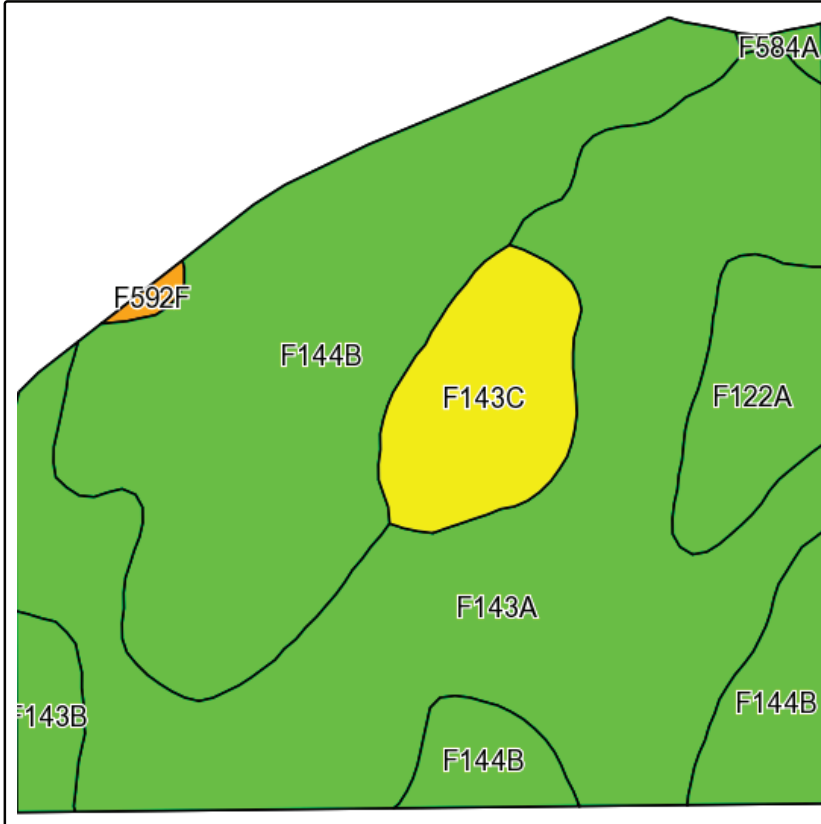


2867 28th Ave S | Fargo, ND 58103
www.johnsonauctionandrealty.com

Walsh County North Dakota farm Land For Sale

NW ¼ less Tract 129.12 Acres Section 5-156-57

Approximately 129.12 Acres



State: **North Dakota**
 County: **Walsh**
 Location: **5-156N-57W**
 Township: **Norton**
 Acres: **127.15**
 Date: **9/5/2013**

Field borders provided by Farm Service Agency as of 5/21/2008.
 Soils data provided by USDA and NRCS.

Code	Soil Description	Acres	Percent of field	Non-Irr Class Legend	Non-Irr Class	Productivity Index
F143A	Barnes-Svea loams, 0 to 3 percent slopes	57.20	45.0%		IIc	87
F144B	Barnes-Buse loams, 3 to 6 percent slopes	48.86	38.4%		IIe	73
F143C	Barnes-Buse-Langhei loams, 6 to 9 percent slopes	9.74	7.7%		IVe	59
F122A	Svea-Cresbard loams, 0 to 3 percent slopes	7.49	5.9%		IIIs	82
F143B	Barnes-Svea loams, 3 to 6 percent slopes	2.84	2.2%		IIe	78
F584A	Edgeley loam, 0 to 2 percent slopes	0.57	0.4%		IIe	77
F592F	Kloten-Walsh-Edgeley loams, 6 to 35 percent slopes	0.45	0.4%		VIe	30
Weighted Average						78.7



*All information contained herein is believed to be true but should be verified to the buyer's satisfaction in case of error, typographical or otherwise. All information is subject to change without further notice.

Steve D. Johnson
 Real Estate Broker
 Auctioneer License #976
 701-799-5213
steve@johnsonauctionandrealty.com



2867 28th Ave S | Fargo, ND 58103
www.johnsonauctionandrealty.com