

Meece Farm

There is a lot to get excited about on this property. The farm contains 81 acres of mature timber along with 5 acres of open pasture. The property has rural water and road frontage on two sides, including route 267 along its eastern border. The parcel is an excellent place to hunt and enjoy the outdoors. There are great home sites on the south side. An appraisal done in 2005 showed an estimated timber value of \$27,557. This farm has been cared for and maintained by the Meece family for decades.



The information contained herein is believed to be accurate, however, it is subject to verification and no liability for errors or omissions is assumed. Seller reserves the right to reject any and all bids or offers. All inquiries, inspection appointments and offers should be directed to:



Worrell-Leka Land Services, LLC

2240 W. Morton
Jacksonville, IL 62650
Phone: 217-245-1618
Fax: 217-245-5318

2240 W. Morton
Jacksonville, IL 62650



Worrell-Leka Land Services, LLC

Meece Farm



**86.12 Taxable
Acres**

Greene County

**Worrell-Leka Land
Services, LLC**

86.12 Acres in Greene County, Illinois

Location: Northeast of Greene County on Route 267, 7 miles South of Mur-rayville, 8 miles East of Roodhouse.

Acreage: 86.12 acres

Minerals: Minerals are intact

Topography: Level to rolling

Soils: Pasture contains Keamah, Ro-zetta, and Hickory

Possession: Upon closing

Terms: Cash at closing

Taxes: \$120.54

Price: \$3,200.00 per acre

Agency Notice: Allan Worrell is the seller's designated agents. To offer a contract to purchase or for additional information, please contact:

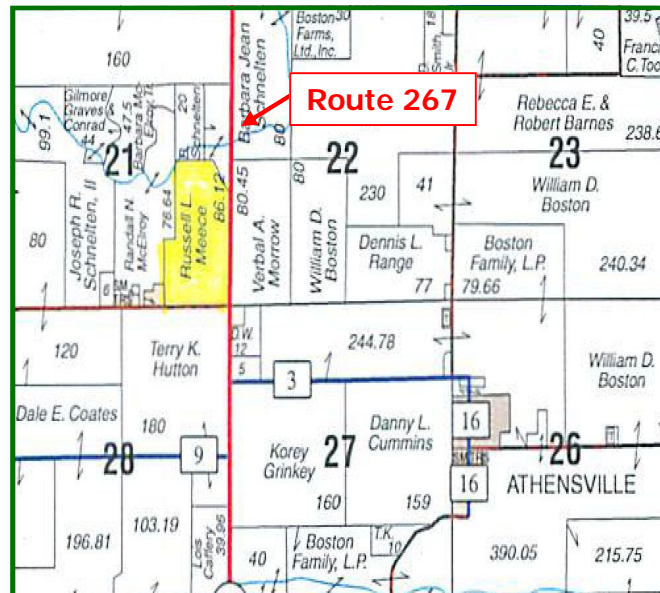
Phone (217) 245-1618

Email: allanw@worrell-leka.com

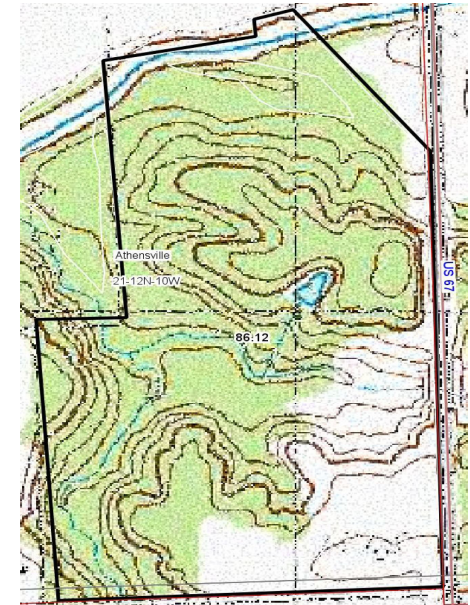
2240 W. Morton
Jacksonville, IL 62650
Phone 217-245-1618
Fax 217-245-5318
www.worrell-leka.com



Section 21, Township 12 North, Range 10 West



Topo Map



Aerial Map

