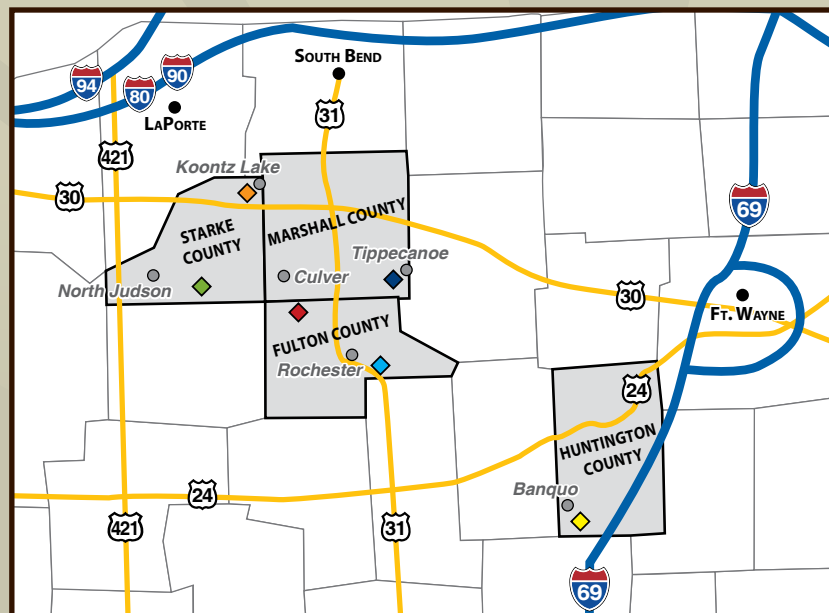


SEALED BID INSTRUCTIONS:

For a bid packet please call our office: 800-424-2324 or
visit our website: www.halderman.com to download an individual bid packet for each farm.

SUBMITTING BIDS: You may fax your bid to Pat Karst at 260-563-8889, or
mail your bid to Pat Karst, c/o Halderman Real Estate, PO Box 297, Wabash, IN 46992.
All bids are due at the Halderman Real Estate office by 5:00 PM on November 27, 2013.



MAP KEY

- FULTON COUNTY
◆ Parcel: 2007-5
◆ Parcel: 2008-02
- HUNTINGTON COUNTY
◆ Parcel: 2007-10
- MARSHALL COUNTY
◆ Parcel: 2008-4
- STARKE COUNTY
◆ Parcel: 2007-12
◆ Parcel: 2009-3

Real Estate Associates by County

FULTON COUNTY PARCELS ◆◆



A.J. Jordan
317-697-3086
ajj@halderman.com

FULTON COUNTY PARCELS ◆◆



Larry Jordan
765-473-5849
lj@halderman.com

HUNTINGTON COUNTY PARCEL ◆



Pat Karst
260-563-8888
patk@halderman.com

HUNTINGTON COUNTY PARCEL ◆



Jon Rosen
260-740-1846
jonr@halderman.com

MARSHALL COUNTY PARCEL ◆



Chad Metzger
260-982-9050
chadm@halderman.com

STARKE COUNTY PARCELS ◆◆



Mike Gentry
219-851-7672
michaelg@halderman.com

STARKE COUNTY PARCELS ◆◆



Julie Matthys
574-310-5189
juliem@halderman.com

STARKE COUNTY PARCELS ◆◆



Larry Smith
219-362-4041
larrys@halderman.com

HALDERMAN
REAL ESTATE
SERVICES
PO Box 297 • Wabash, IN 46992

"Farm & Transitional Real Estate
Specialists Since 1930"

800.424.2324
www.halderman.com

Sealed Bid Farmland Auction

294^{+/-} Total Acres
4 Counties • 6 Parcels

Sealed Bids Due by 5:00 PM on November 27th

Sealed Bid Farmland Auction

294^{+/-} Total Acres
4 Counties • 6 Parcels

Sealed Bids Due by 5:00 PM on November 27th

Fulton • Huntington
Marshall • Starke

HALDERMAN
REAL ESTATE
SERVICES
HLS# PJK-11356-61 (13)
800.424.2324 | www.halderman.com

Sealed Bid Farmland Auction

294^{+/-} Total Acres

4 Counties • 6 Parcels

Fulton • Huntington • Marshall • Starke

Sealed Bids Due by 5:00 PM on November 27th

244^{+/-} Tillable • 23.5^{+/-} Wooded
7.49^{+/-} CRP

Owner: Blackburne & Brown
Equity Preservation Fund, LLC
Manager: George Blackburne, III

Auction conducted in
cooperation with Emeric Szalay
of Collins & Company Realtors



HALDERMAN
REAL ESTATE
SERVICES
HLS# PJK-11356-61 (13)

800.424.2324 | www.halderman.com

HRES Auctioneer License #AC69200019
Auctioneer: Chad Metzger, IN Auctioneer License #AC31300015

Complete TERMS & CONDITIONS for each parcel can be found at: www.halderman.com



FULTON COUNTY: PARCEL 2007-5 *Starting Bid:*
Henry Township **\$250,000.00**



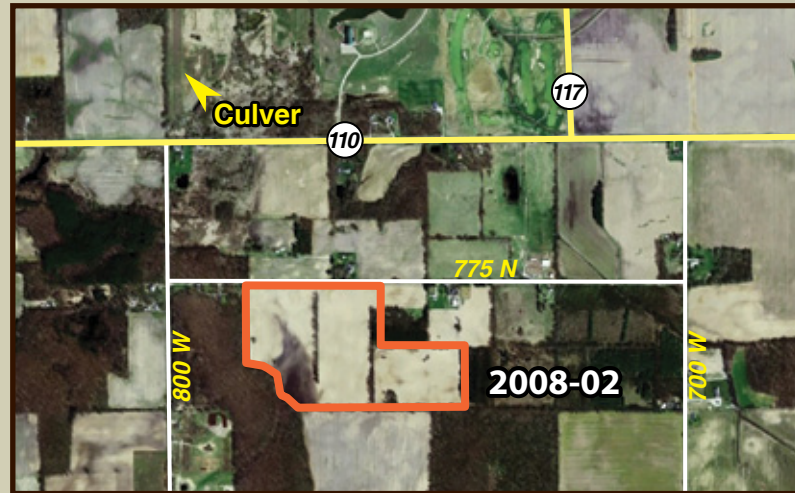
45.36^{+/-} Total Acres
37.6^{+/-} Tillable • 4.5^{+/-} Wooded

Location: 7 miles east of Rochester, IN.
Schools: Tippecanoe Valley School Corporation
Annual Taxes: \$1,126.38
Topography: Level ~ Gently Rolling

SOILS:

WkB Wawasee fine sandy loam
Bb Barry loam
WkC2 Wawasee fine sandy loam
CrA Crosier loam
MaA Markton loamy sand
Hm Houghton muck
Ed Edwards muck
Wh Washtenaw silt loam

FULTON COUNTY: PARCEL 2008-02 *Starting Bid:*
Aubbeenaubbee Township **\$250,000.00**



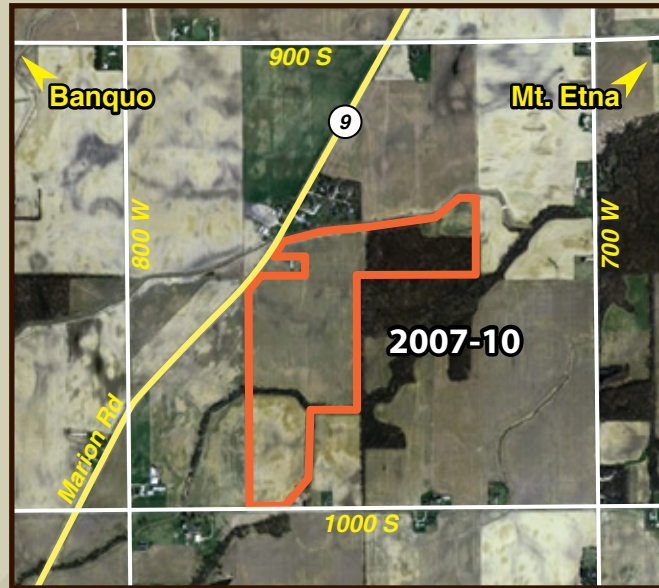
50.35^{+/-} Total Acres
46^{+/-} Tillable • 2^{+/-} Wooded

Location: 5 miles southeast of Culver, IN.
Schools: Culver Community School Corporation
Annual Taxes: \$619.10
Topography: Rolling

SOILS:

MeB Metea loamy sand
PIB Plainfield sand
Wh Washtenaw silt loam
Wa Wallkill silt loam
Hm Houghton muck

HUNTINGTON COUNTY: PARCEL 2007-10 *Starting Bid:*
Wayne Township **\$470,000.00**



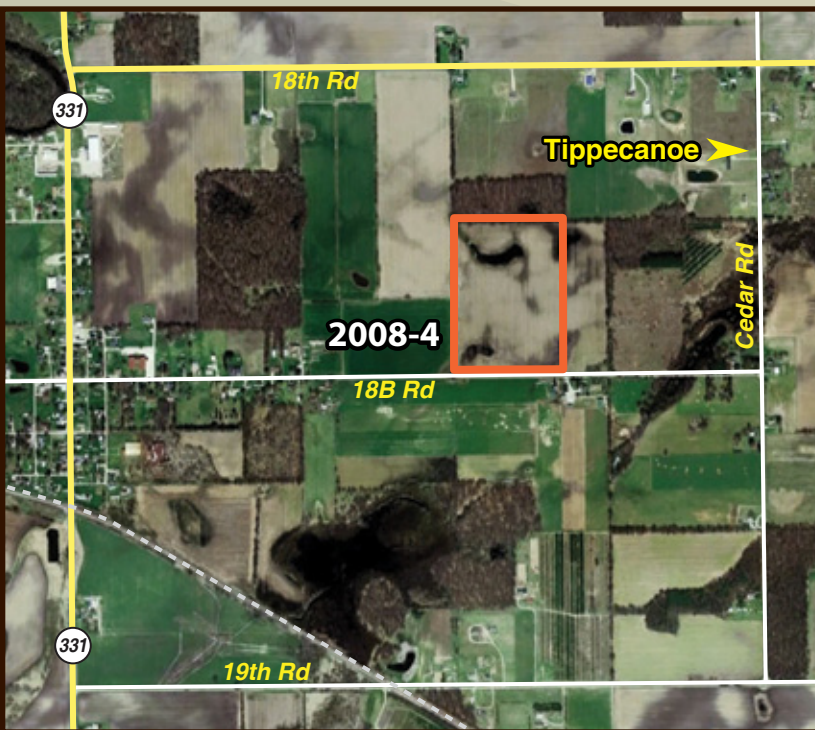
95^{+/-} Total Acres
73.7^{+/-} Tillable • 17^{+/-} Wooded

Location: 1.5 miles southeast of Banquo, IN.
Schools: Huntington County Community Schools
Annual Taxes: \$1,889.28
Topography: Level ~ Gently Rolling

SOILS:

BcB2 Blount silt loam
Pg Pewamo silty clay loam
MzC3 Morley clay loam
GIB2 Glynwood silt loam
Sh Shoals silt loam

MARSHALL COUNTY: PARCEL 2008-4 *Starting Bid:*
Tippecanoe Township **\$150,000.00**



30^{+/-} Total Acres
28.79^{+/-} Tillable

Location: 0.5 mile east of Tippecanoe, IN.
Schools: Triton School Corporation
Annual Taxes: \$658.46
Topography: Level

SOILS:

Bd Brady sandy loam
Gf Gilford sandy loam
BoA Bronson loamy sand
PdA Pinhook sandy loam

STARKE COUNTY: PARCEL 2007-12 *Starting Bid:*
Wayne Township **\$180,000.00**



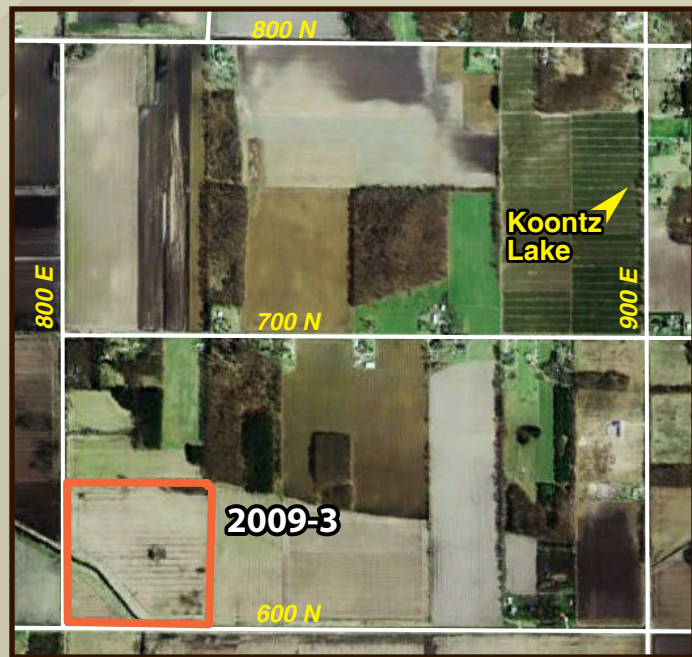
33.4^{+/-} Total Acres
28^{+/-} Tillable

Location: 3 miles southeast of North Judson, IN.
Schools: North Judson-San Pierre School Corporation
Annual Taxes: \$542.62
Topography: Level

SOILS:

PtA Plainfield sand
To Toto muck
Nf Newton loamy sand
Mr Morocco loamy sand
Ad Adrian muck

STARKE COUNTY: PARCEL 2009-3 *Starting Bid:*
Oregon Township **\$180,000.00**



40^{+/-} Total Acres
30^{+/-} Tillable • 7.49^{+/-} CRP

Location: 5 miles southwest of Koontz Lake.
Schools: Oregon-Davis School Corporation
Annual Taxes: \$498.98
Topography: Level

SOILS:

Ad Adrian muck
To Toto muck
Mr Morocco loamy sand
Wk Watseka loamy sand