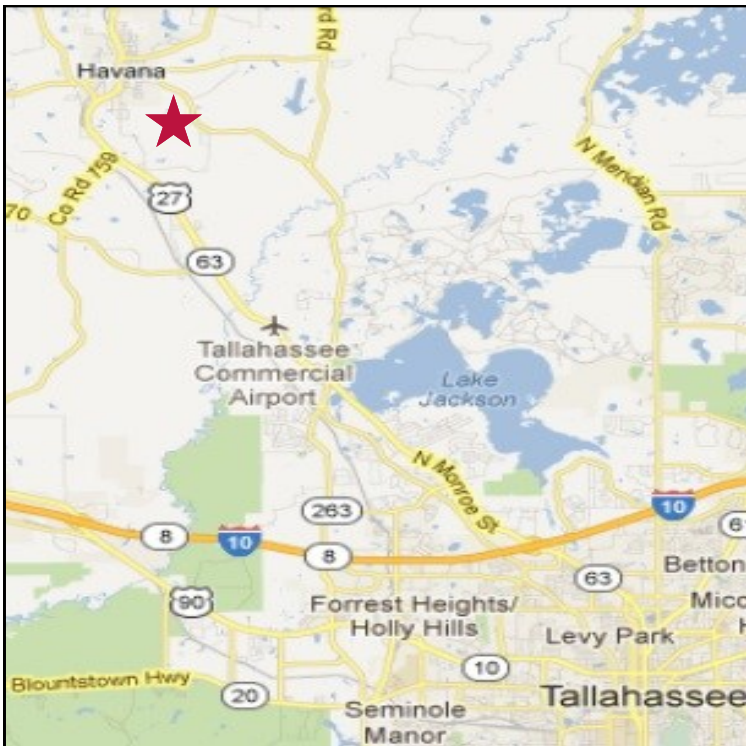
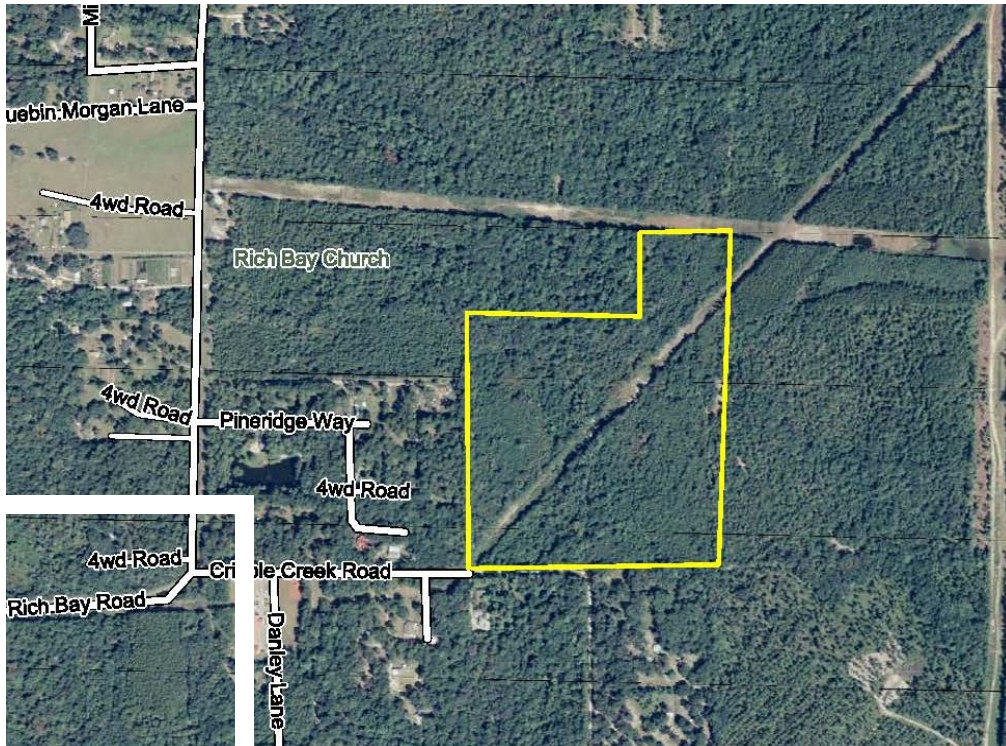


LAND

# Cripple Creek

Havana, Gadsden County, FL 32333



## FOR SALE

Located 11.3 miles  
north of Tallahassee

- 44 +/- Acres
- Rolling topography
- Have you been looking for that affordable tract of land close to Tallahassee? Cripple Creek is located between Tallahassee and Havana off of Rich Bay Road. It is mainly hardwoods with a small wet weather creek that runs North to south.
- AG 3 Zoning
- TAX ID#  
3-01-2N-2W-0000-00430-0000

~~\$64,900~~  
**57,900**



Commercial Real Estate Services, Worldwide.

The information contained herein has been given to us by the owner of the property or other sources we deem reliable, we have no reason to doubt its accuracy, but do not guarantee it. All information should be verified prior to purchase or lease.

### Contact information

David Williamson  
1018 Thomasville Road, Suite 200A  
Tallahassee, Florida 32303  
(850) 224 2300 Ext. 22  
david@talcor.com  
www.talcor.com