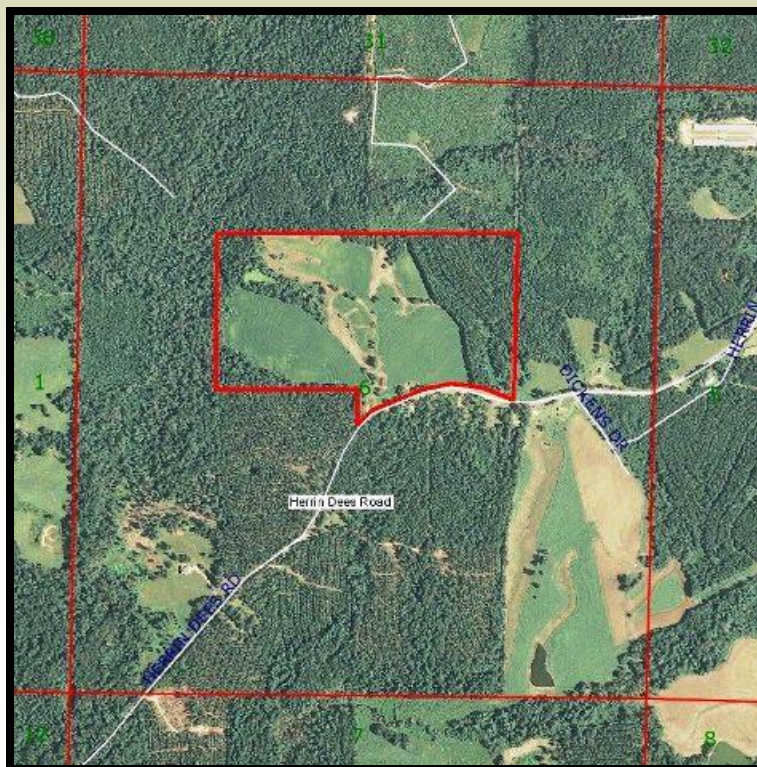




Herrin Dees Road

82 Acres +/-
Covington County, MS



82 acres located in Section 6, T8N, R15W in Covington County, MS with approx. 42 acres suitable for farming or pasture. The property is perimeter fenced, currently planted in peanuts and will be grazed after the harvest. There are 2 potential lake sites on the tract with one pond currently in place and 15 acres of 25 year pines on the east side.

Approximately ¼ mile of frontage of Herrin Dees Road with utilities available. This is an opportunity to own farm/pasture/recreational land conveniently located 3 miles from Collins, 30 miles from Hattiesburg and 60 miles from Jackson.

\$263,220.00

CONTACT:

J. PARKER SARTAIN

601.506.2398

psartain@sartainsheritage.com

Sartain's Heritage Properties

106 First Choice Drive

Madison, MS 39110

601.856.2720

Fax: 601.853.6765

www.SartainsHeritage.com

