

75 Acres M/L Warren County, Iowa



Price: \$232,500
\$3,100 / Acre

Description: 75 acres m/l located just south of Indianola. 33.5 acres m/l is enrolled in CRP paying \$3,500 annually expiring in 2014. Tillable acres carry a weighted average CSR of 59.1. The balance of the farm is pasture with recreational hunting opportunity. Excellent Location!

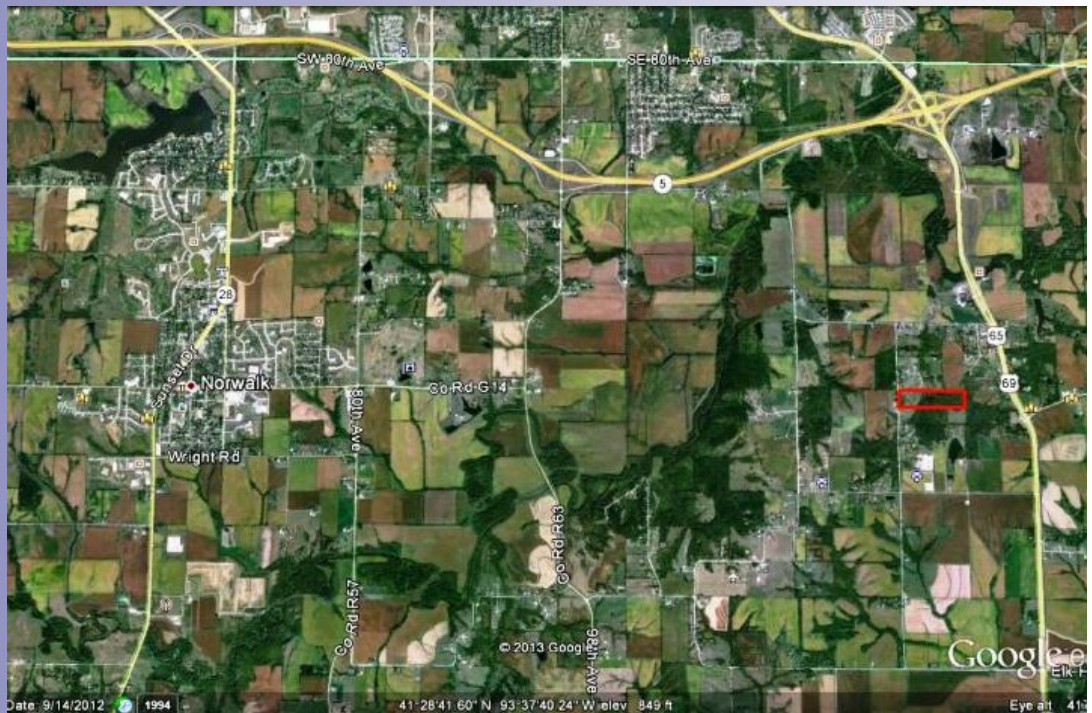
Farm Program Information: 33.5 acres m/l is enrolled in CRP paying \$3,500 annually expiring in 2014. Tillable acres carry a weighted average CSR of 59.1.

Legal Description: The SW 1/4 of the SW 1/4 Except 5 acres in the SW corner and the NW 1/4 of the SW 1/4 in Section 8, T-75N, R-23W of the 5th PM.

Directions: From Indianola, Take HWY 69 south to the HWY 65 turnoff. Go east on Hwy 65 to 140th Ave. Take 140th North past Newbold St. The property is on the east side of 140th Ave.

Taxes: \$840.00

Kenny Herring
P: 515.961.0247
C: 515.783.8718
Kenny@PeoplesCompany.com



Additional information can be found on our website: **LISTING # 11393**

www.Linkedin.com/company/Peoples-Company
www.Facebook.com/PeoplesCompany
www.Twitter.com/PeoplesCompany
www.YouTube.com/PeoplesCo
Blog: www.PeoplesCompany.com/Blog



© 2013 Peoples Company We obtained the information above from sources we believe to be reliable. However, we have not verified its accuracy and make no guarantee, warranty or representation about it. It is submitted subject to the possibility of errors, omissions, change of price, rental or other conditions, prior sale, lease or financing, or withdrawal without notice. We include projections, opinions, assumptions or estimates for example only and they may not represent current or future performance of the property. You and your tax and legal advisors should conduct your own investigation of the property and transaction.