

80 Acres M/L Warren County, Iowa



Price: \$515,000
\$6,563 / Acre

Description: This farm used to be a showplace. Family held for decades but its time to sell. Quaint settling with older farm house, hip roof barn and machine shed. 41.4 CRP with 2 payments left. 20 acres of pasture - pull interior fence out and combine into cropland. Excellent location near paving. Have horses or a handful of cows!

Farm Program Information:
81.7 Farmland 64.4 Cropland Corn:
13.3 Base Acres with a DY and CC
Yield of 102.

Legal Description: The S1/2 of the NE 1/4 S1/2 NE1/4 Section 25 T-76N, R-25W of the 5th PM of Iowa

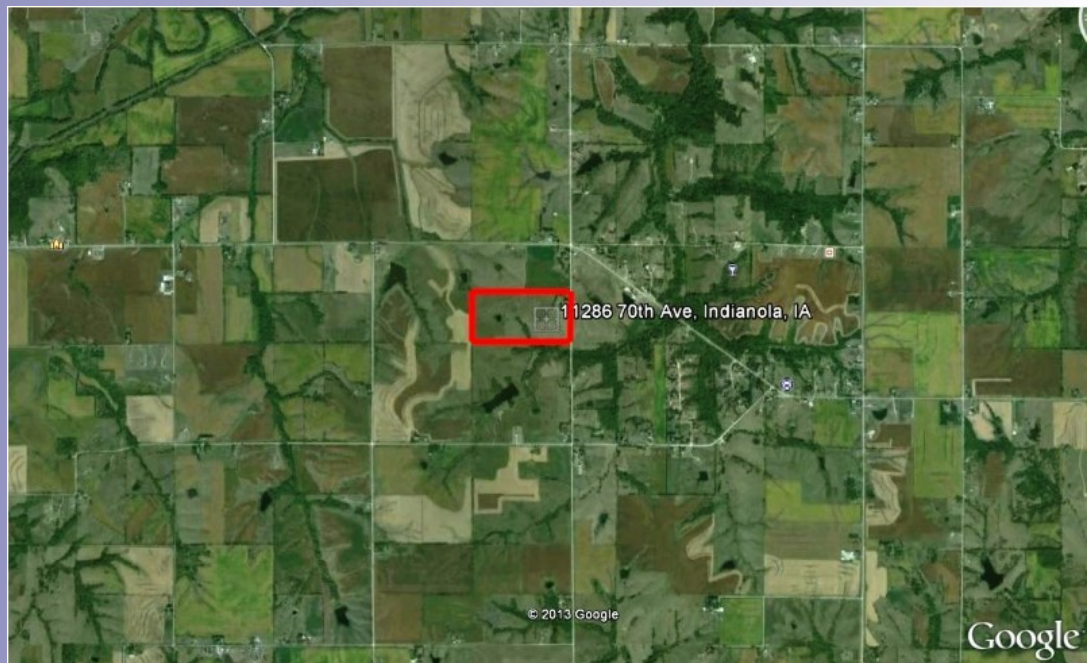
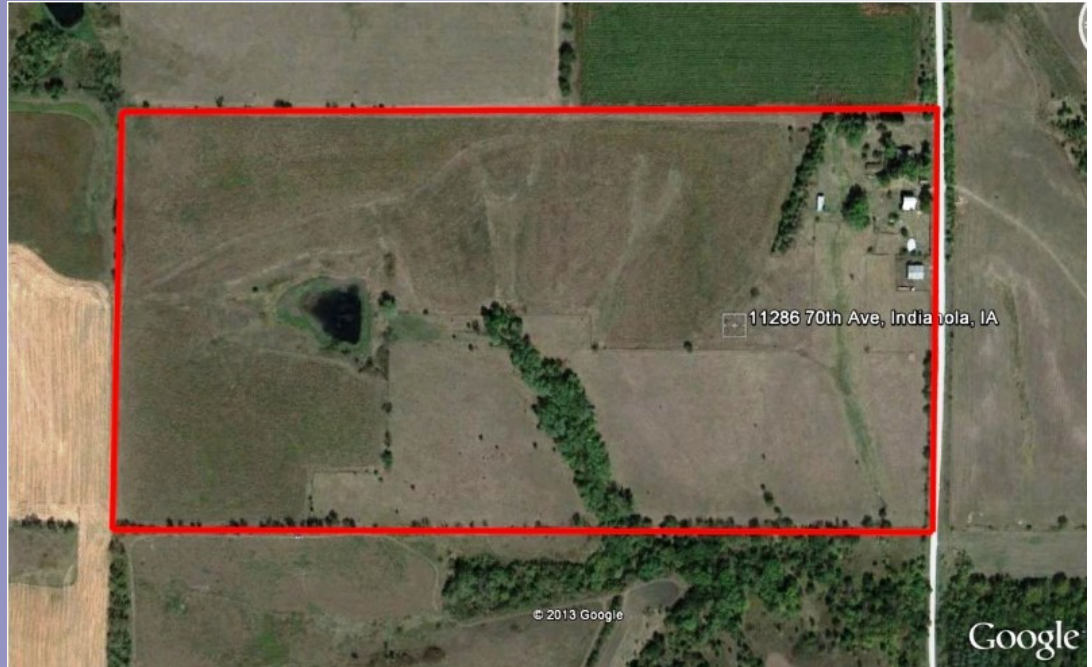
Directions: Hwy 92 West of Indianola 5 miles to 70th Ave. South 1 1/4 mile South. On West side of road. **Taxes:** \$812.00

John Hutchcroft

P: 515.961.0247

C: 515.321.5970

Terry@PeoplesCompany.com



© 2013 Peoples Company We obtained the information above from sources we believe to be reliable. However, we have not verified its accuracy and make no guarantee, warranty or representation about it. It is submitted subject to the possibility of errors, omissions, change of price, rental or other conditions, prior sale, lease or financing, or withdrawal without notice. We include projections, opinions, assumptions or estimates for example only and they may not represent current or future performance of the property. You and your tax and legal advisors should conduct your own investigation of the property and transaction.

Additional information can be found on our website: **LISTING # 11363**

www.Linkedin.com/company/Peoples-Company
www.Facebook.com/PeoplesCompany
www.Twitter.com/PeoplesCompany
www.YouTube.com/PeoplesCo
Blog: www.PeoplesCompany.com/Blog

