

An aerial photograph showing three distinct land parcels outlined in white. The top parcel is shaded in a light blue-grey tone. The bottom-left parcel is a large, mostly green field. The bottom-right parcel is a smaller, shaded area. The surrounding landscape includes green fields, some trees, and a few small buildings or structures.

Independence Oaks Homestead
68.29 Acres
21,739 SF improvements

Little Rocky Acres
68.89 Acres

Little Rocky Camp
5.67 Acres



INDEPENDENCE OAKS 3 Alternative Offerings

Google earth

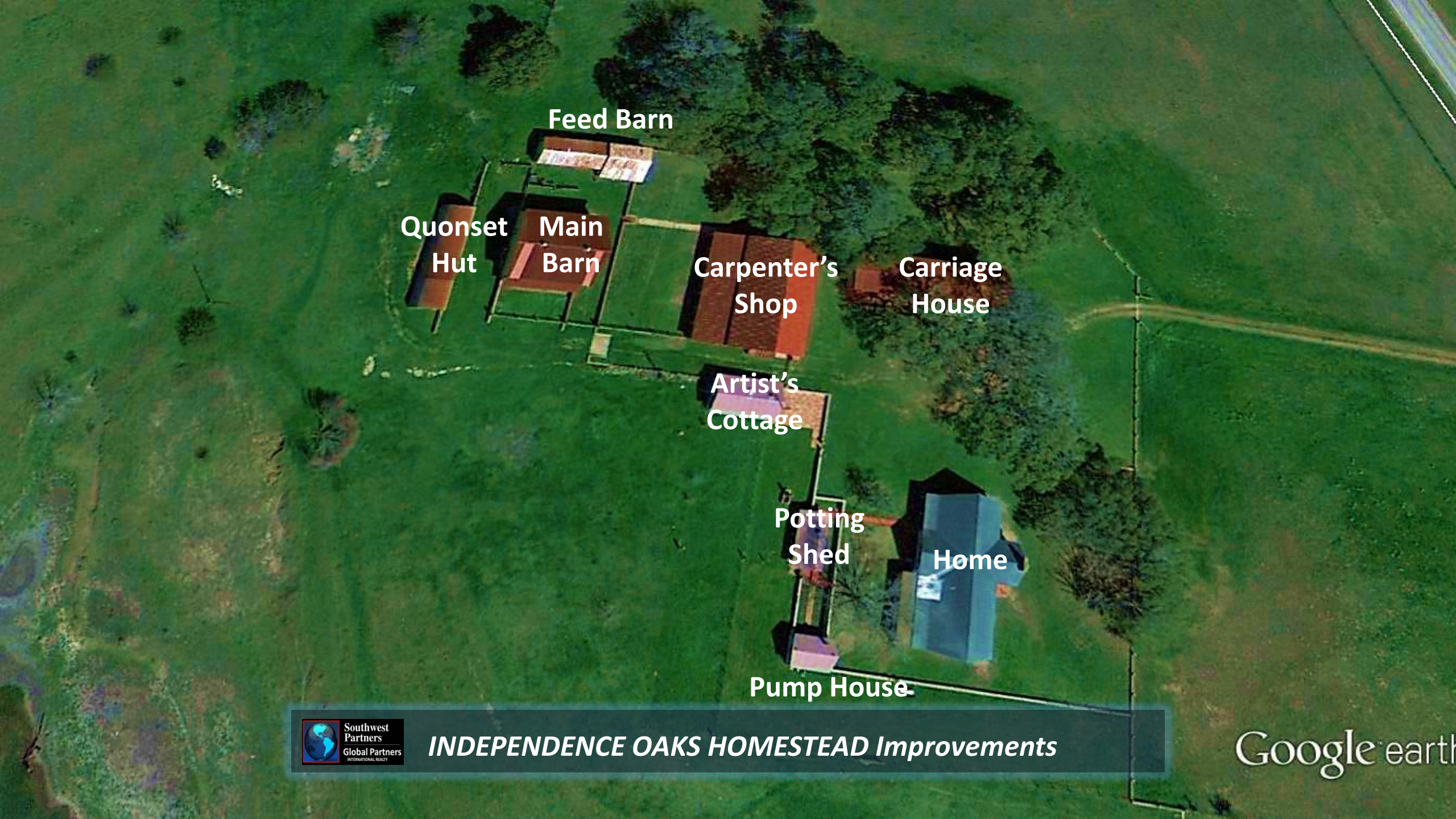


Independence Oaks Homestead
68.29 Acres
21,739 SF Improvements



INDEPENDENCE OAKS HOMESTEAD

Google earth

An aerial photograph of a rural property with several buildings. The buildings are labeled with white text. The labels are: Feed Barn, Quonset Hut, Main Barn, Carpenter's Shop, Carriage House, Artist's Cottage, Potting Shed, Home, and Pump House. The property is surrounded by green fields and trees.

Feed Barn

Quonset Hut

Main Barn

Carpenter's Shop

Carriage House

Artist's Cottage

Potting Shed

Home

Pump House



INDEPENDENCE OAKS HOMESTEAD Improvements

Google earth

1,376' FM 2621 Frontage



INDEPENDENCE OAKS HOMESTEAD 1,376' Frontage

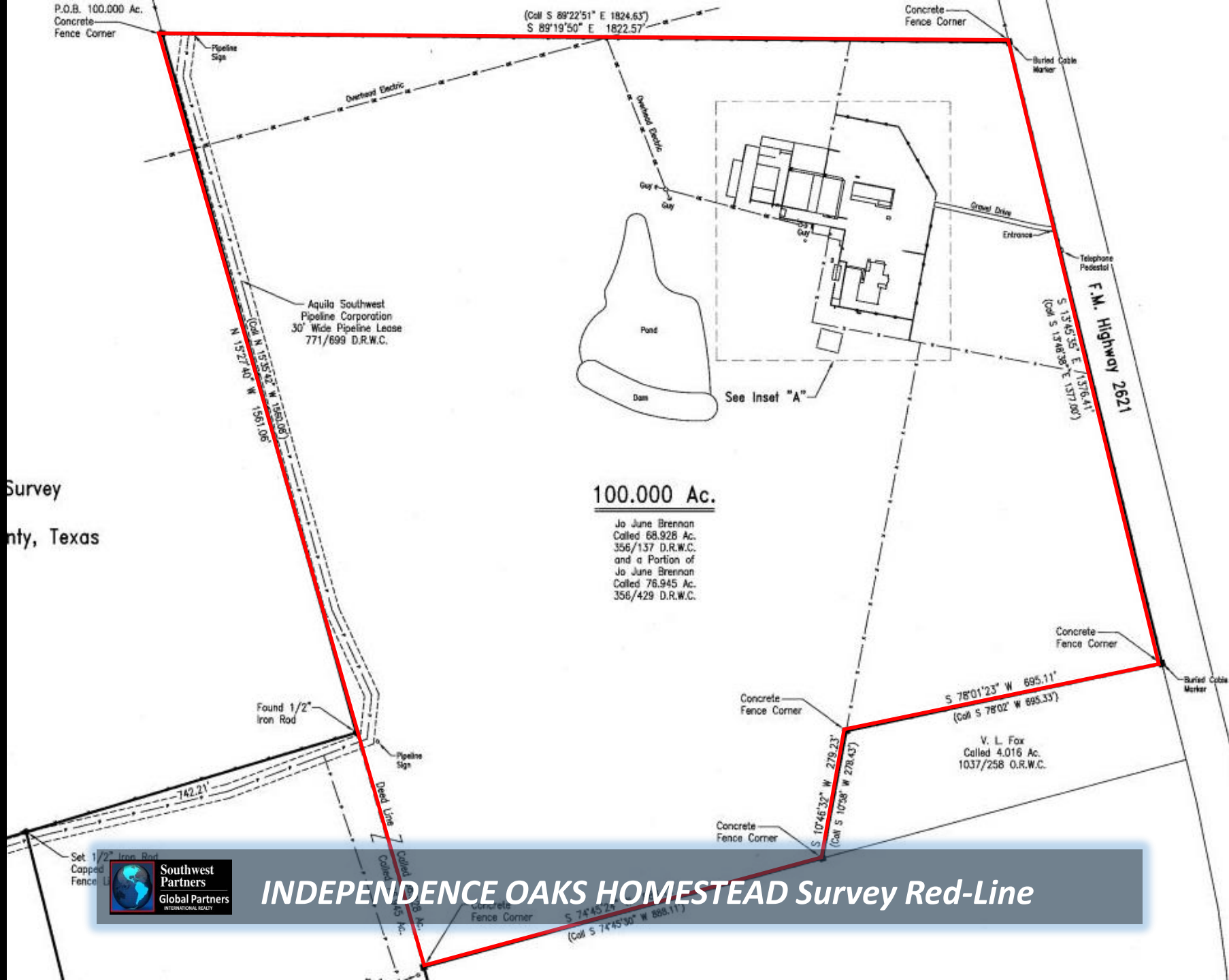
Google earth

The map shows a large tract of 100.000 Ac. owned by Jo June Brennan, which includes two smaller parcels: 68.928 Ac. (356/137 D.R.W.C.) and 76.945 Ac. (356/429 D.R.W.C.). To the east is a portion of another parcel owned by V. L. Fox (1037/258 O.R.W.C.). The map features several key elements:

- Pipelines:** A 30' wide pipeline lease from Aquila Southwest Pipeline Corporation runs along the western boundary.
- Roads:** F.M. Highway 2621 runs along the eastern boundary. Other roads include Gravel Drive and a Dead Line.
- Infrastructure:** Overhead Electric lines, a Telephone Pedestal, and Buried Cable Markers are shown.
- Natural Features:** A Pond and a Dam are located near the center of the main tract.
- Survey Points:** Concrete Fence Corners are marked at various locations. Specific bearings and distances are provided for many boundaries, such as S 89°22'51" E 1824.63' and S 78°01'23" W 695.11'.
- Other Labels:** "See Inset 'A'" points to a detailed building footprint. "Found 1/2\"

Jo June Brennan
 Called 68.928 Ac.
 356/137 D.R.W.C.
 and a Portion of
 Jo June Brennan
 Called 76.945 Ac.
 356/429 D.R.W.C.





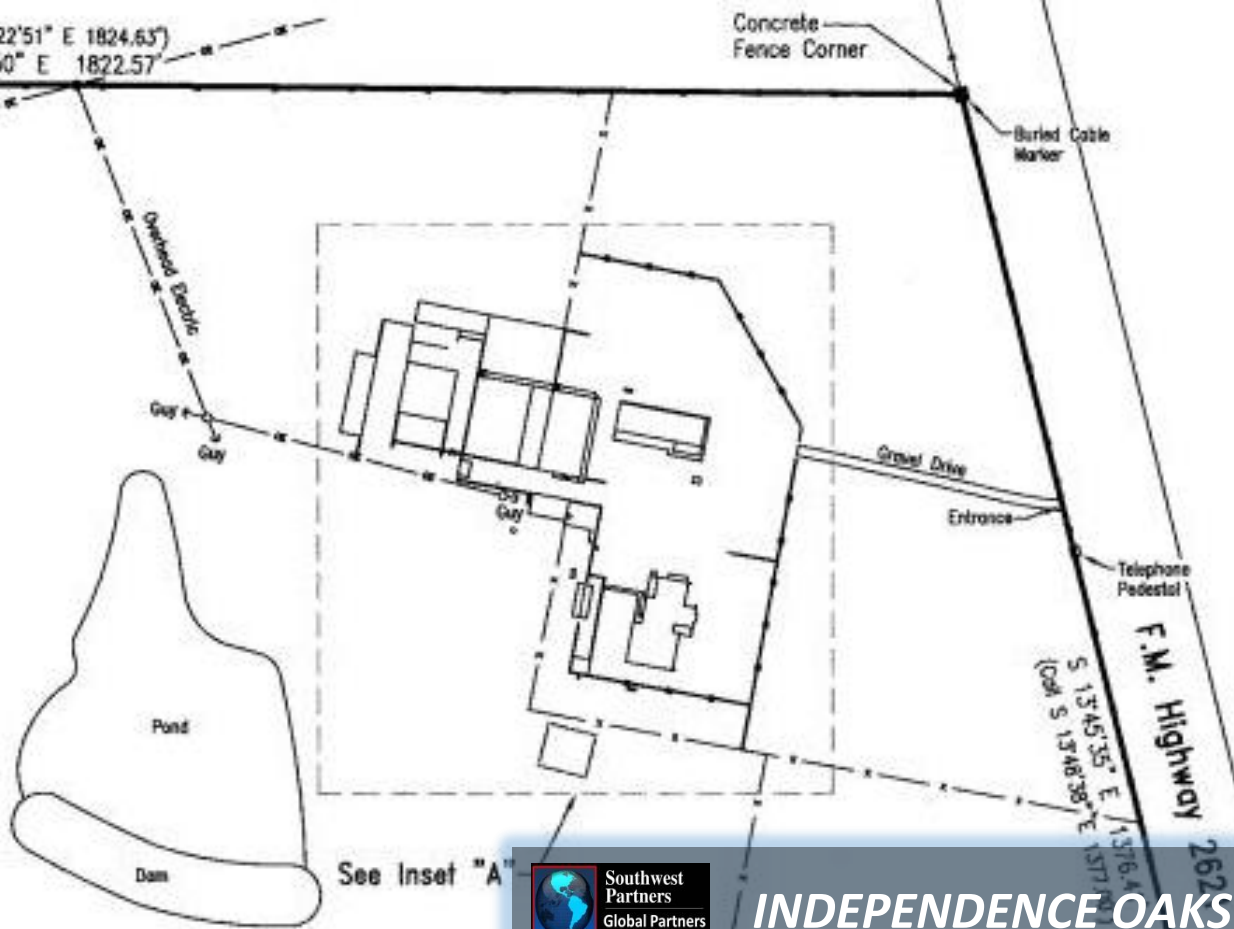
Survey
nty, Texas



INDEPENDENCE OAKS HOMESTEAD Survey Red-Line

Quinlan and
Quinlan
Less 1.29 Ac.
D.R.W.C.

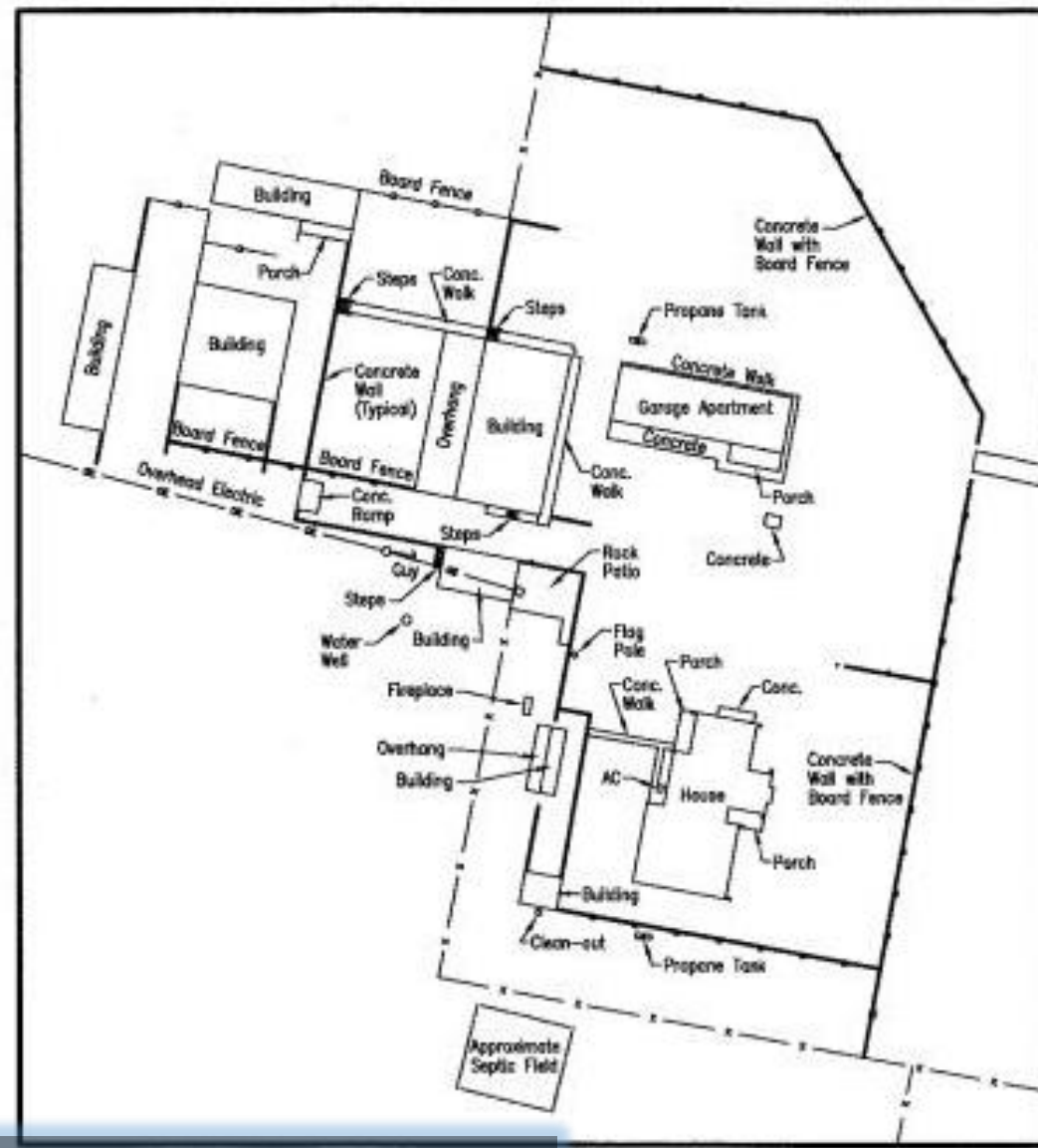
22°51' E 1824.63'
0° E 1822.57'



See Inset "A"



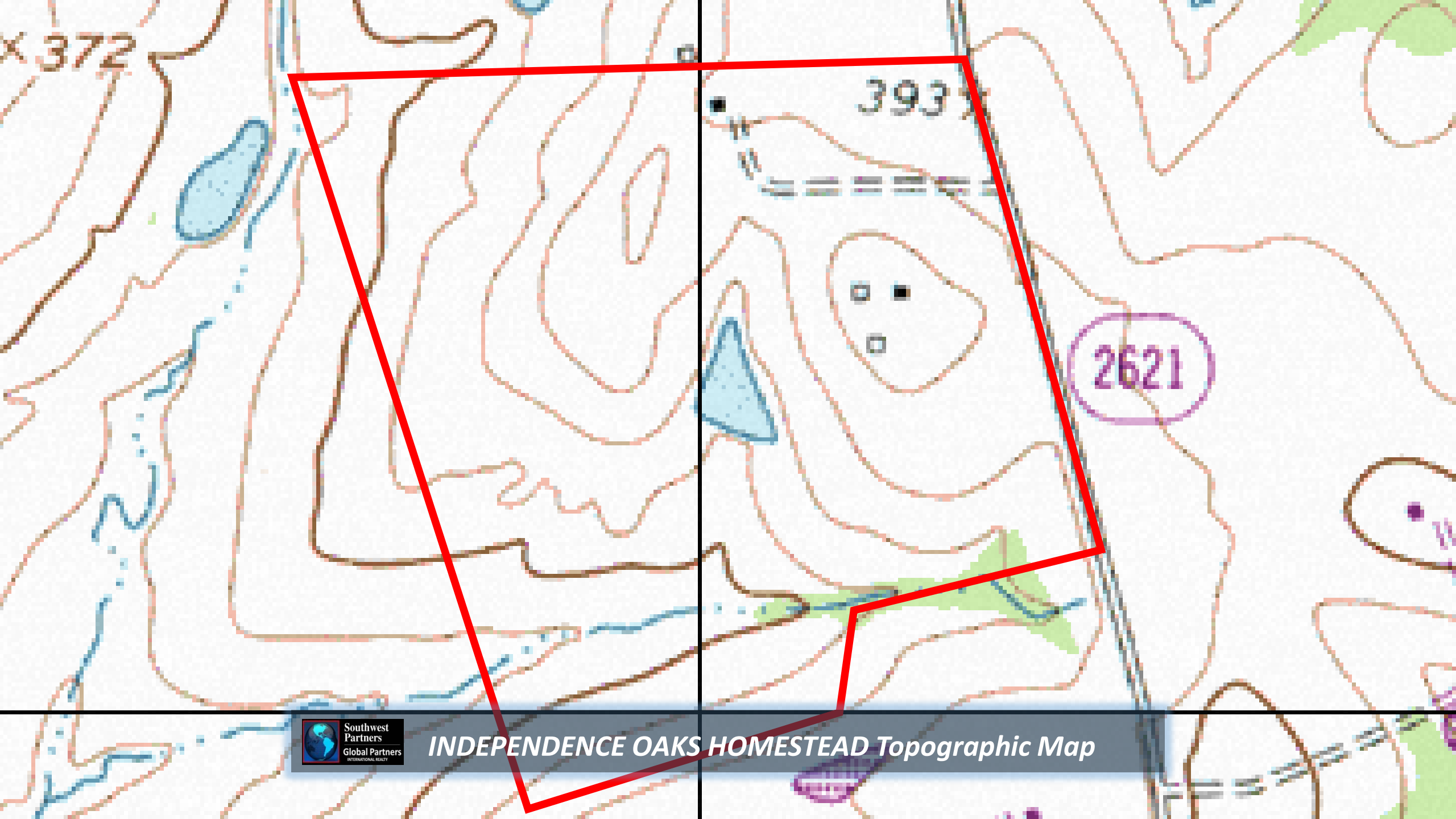
INDEPENDENCE OAKS HOMESTEAD Improvements



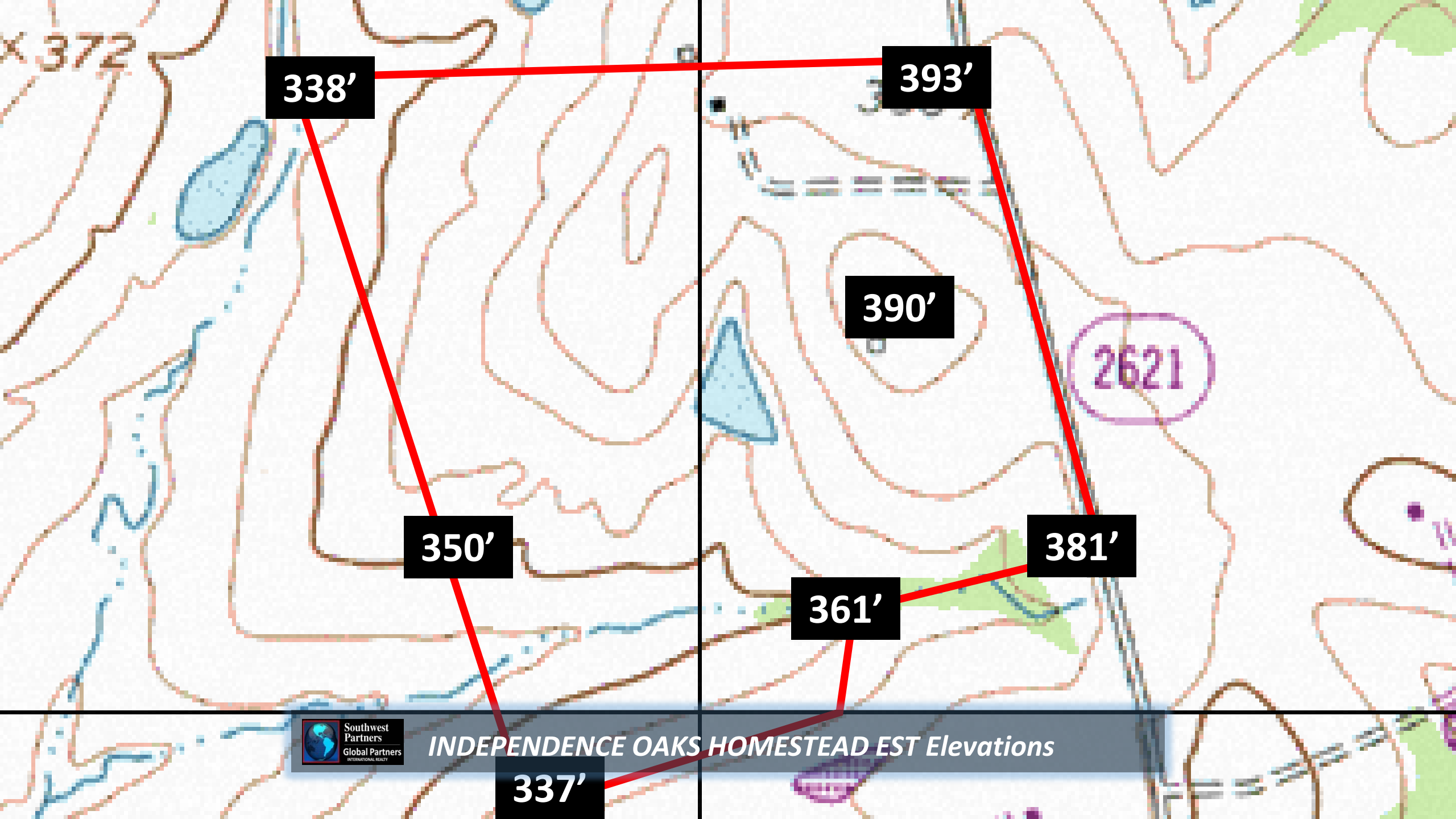
Inset "A"
Scale: 1"=100'



INDEPENDENCE OAKS HOMESTEAD *Satellite with Topo*



INDEPENDENCE OAKS HOMESTEAD Topographic Map



338'

393'

390'

2621

350'

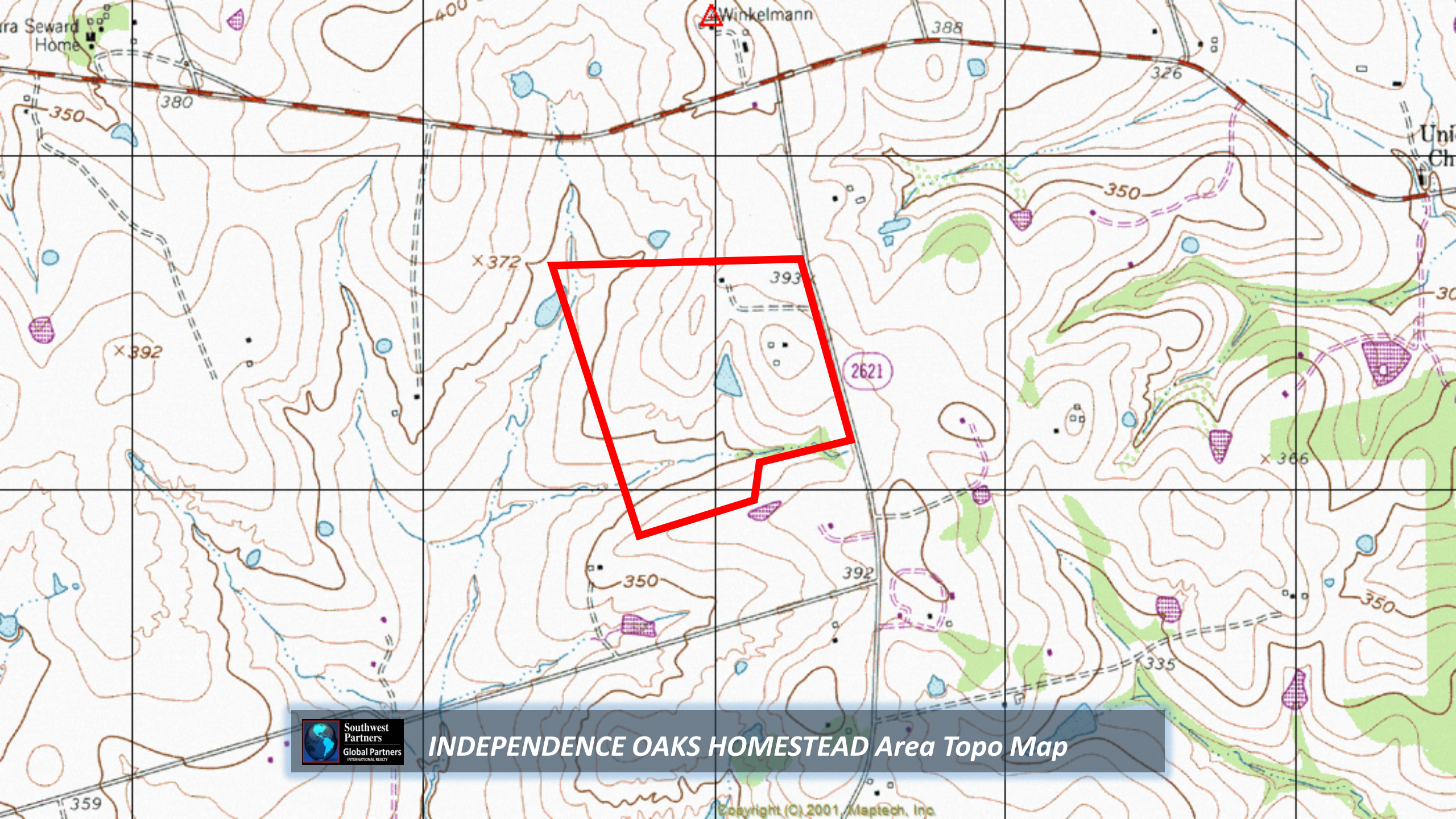
381'

361'

337'



INDEPENDENCE OAKS HOMESTEAD EST Elevations



INDEPENDENCE OAKS HOMESTEAD Area Topo Map



INDEPENDENCE OAKS HOMESTEAD FM 50 RD Access



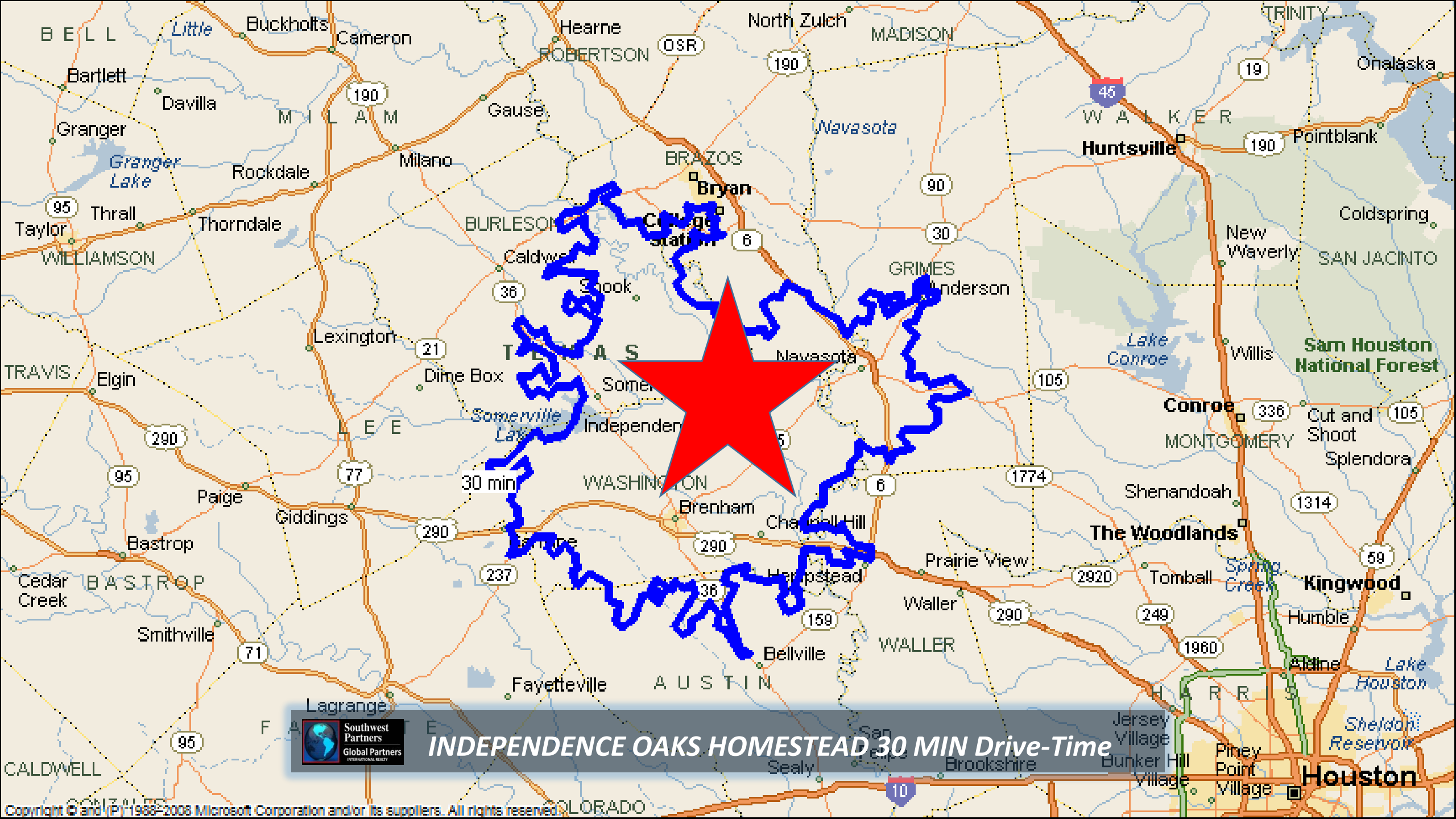
INDEPENDENCE OAKS HOMESTEAD 16 MI to US 290 E



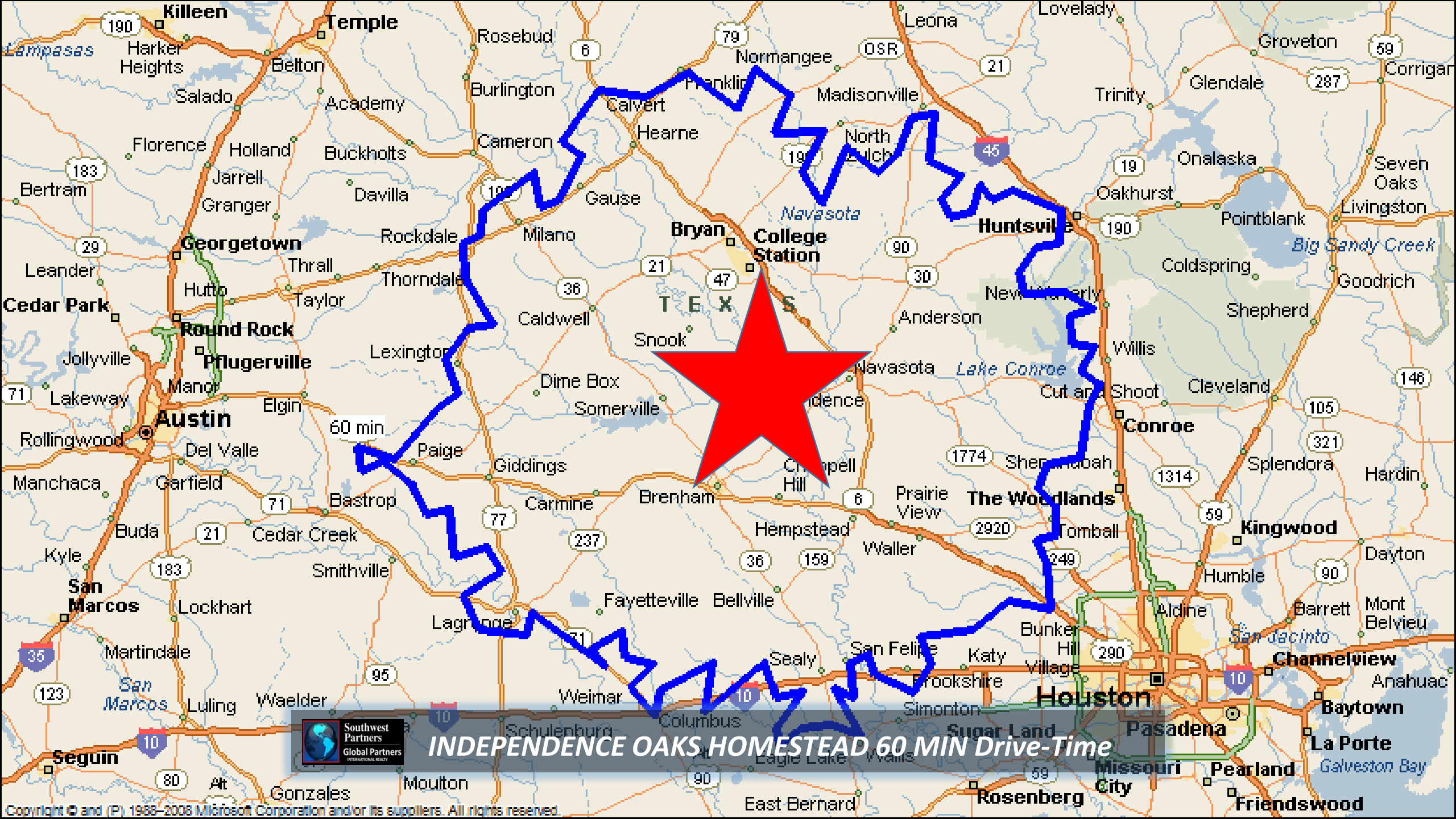
INDEPENDENCE OAKS HOMESTEAD 21 MI to US 290 W



Copyright © and (P) 1988–2008 Microsoft Corporation and/or its suppliers. All rights reserved.

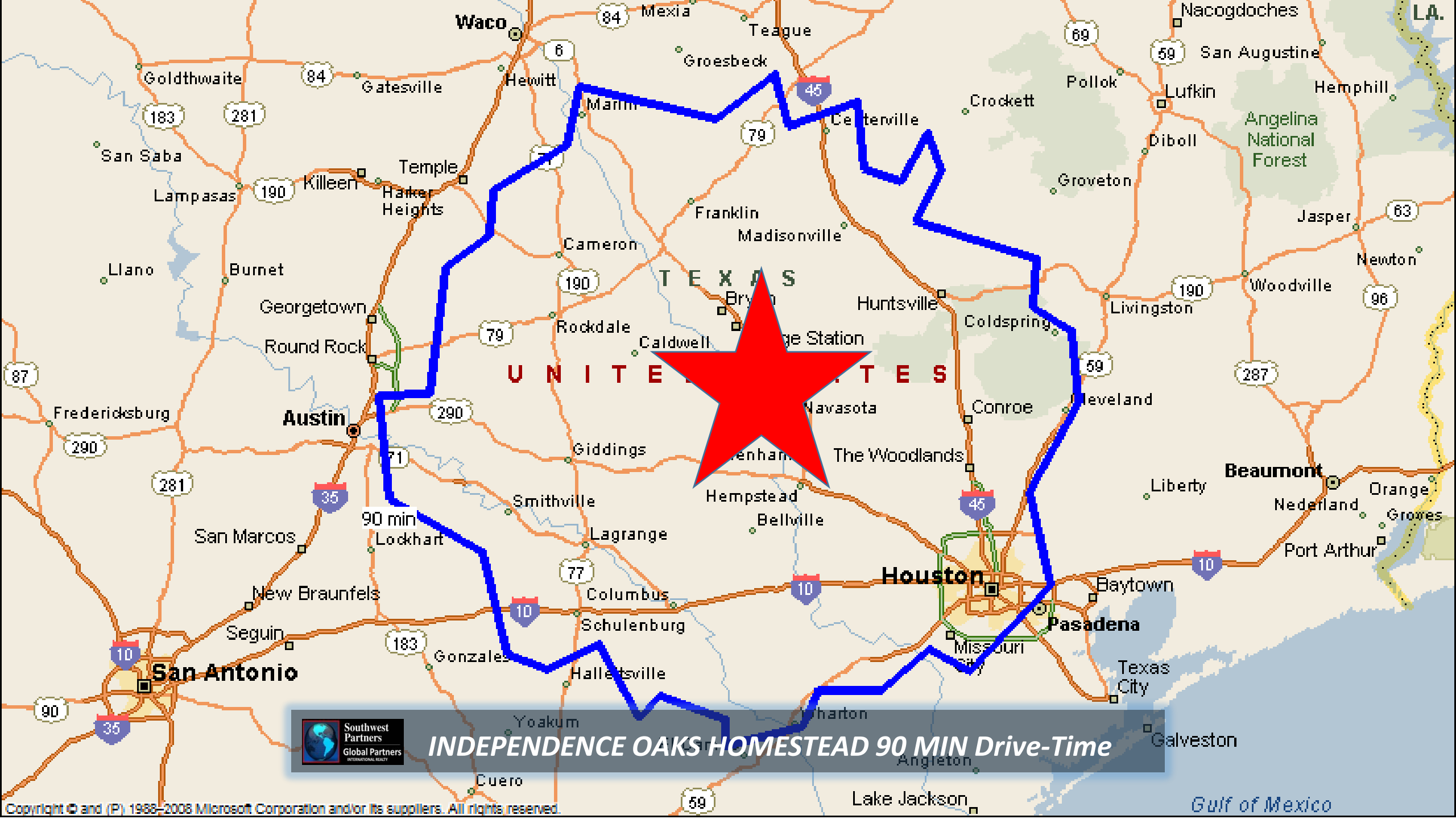


INDEPENDENCE OAKS HOMESTEAD 30 MIN Drive-Time

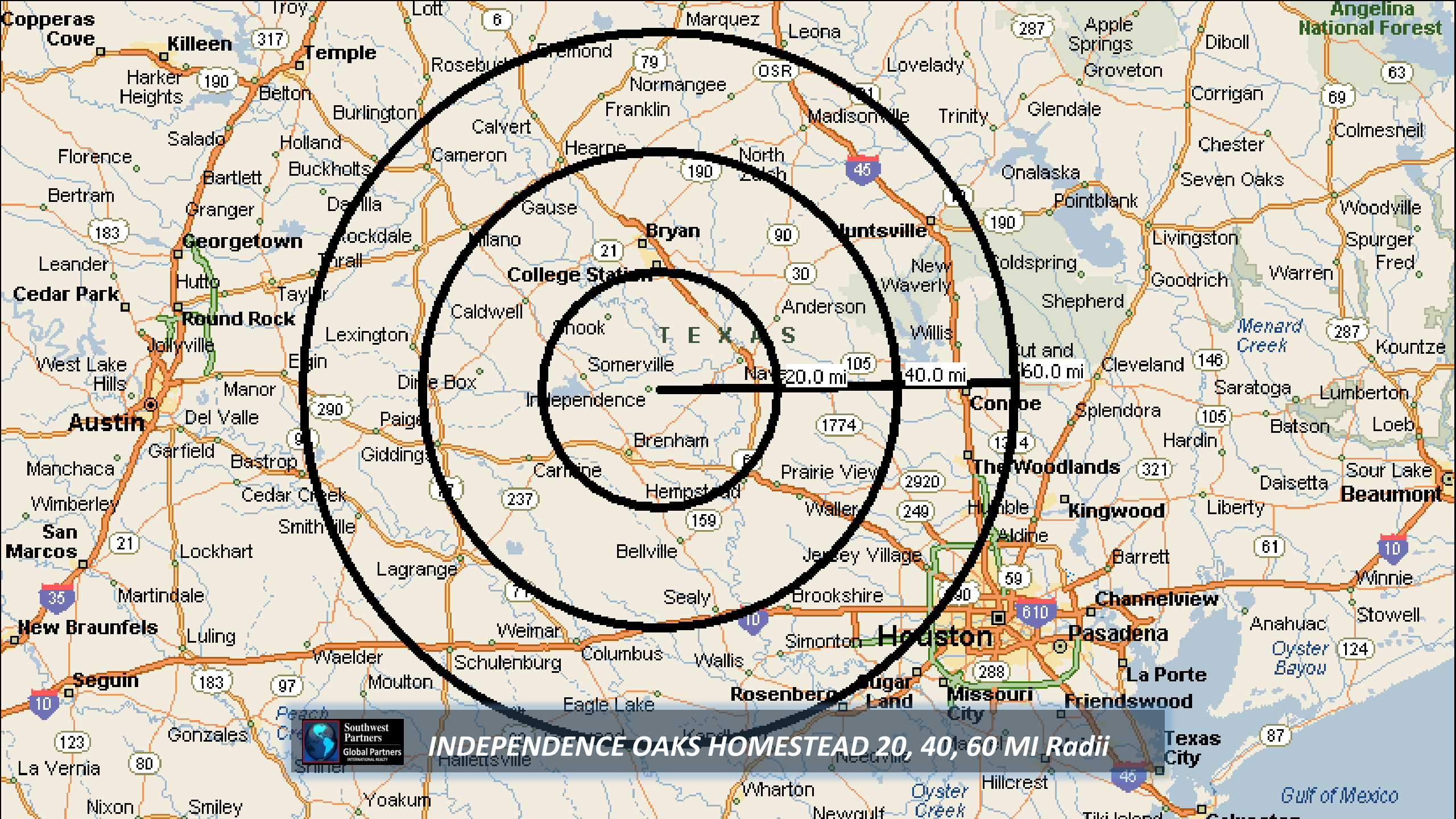


INDEPENDENCE OAKS HOMESTEAD 60 MIN Drive-Time

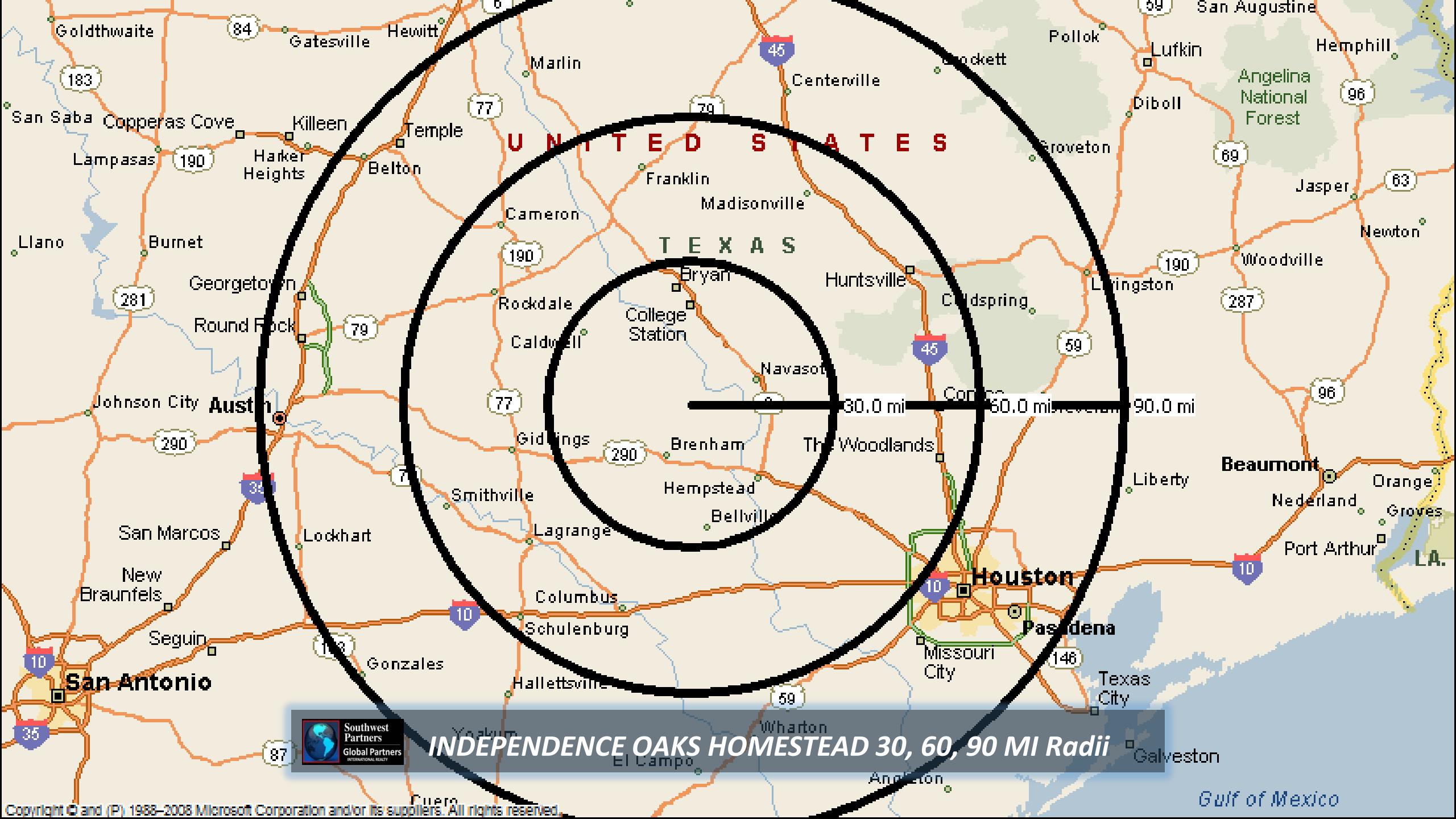




INDEPENDENCE OAKS HOMESTEAD 90 MIN Drive-Time



INDEPENDENCE OAKS HOMESTEAD 20, 40, 60 MI Radii



INDEPENDENCE OAKS HOMESTEAD 30, 60, 90 MI Radii





INDEPENDENCE OAKS HOMESTEAD Texas Map



INDEPENDENCE OAKS HOMESTEAD



<http://www.swpre.com/listing/independence-oaks-homestead/>



INDEPENDENCE OAKS HOMESTEAD



**Southwest
Partners**

Global Partners
INTERNATIONAL REALTY

Teri Davis, MS, ABR, ALHS, CIPS

Land & Ranch Team Leader, RAINMAKER, Broker Associate

M: 979.830.5303 O: 979.421.9996 teri.davis@swpre.com



INDEPENDENCE OAKS HOMESTEAD