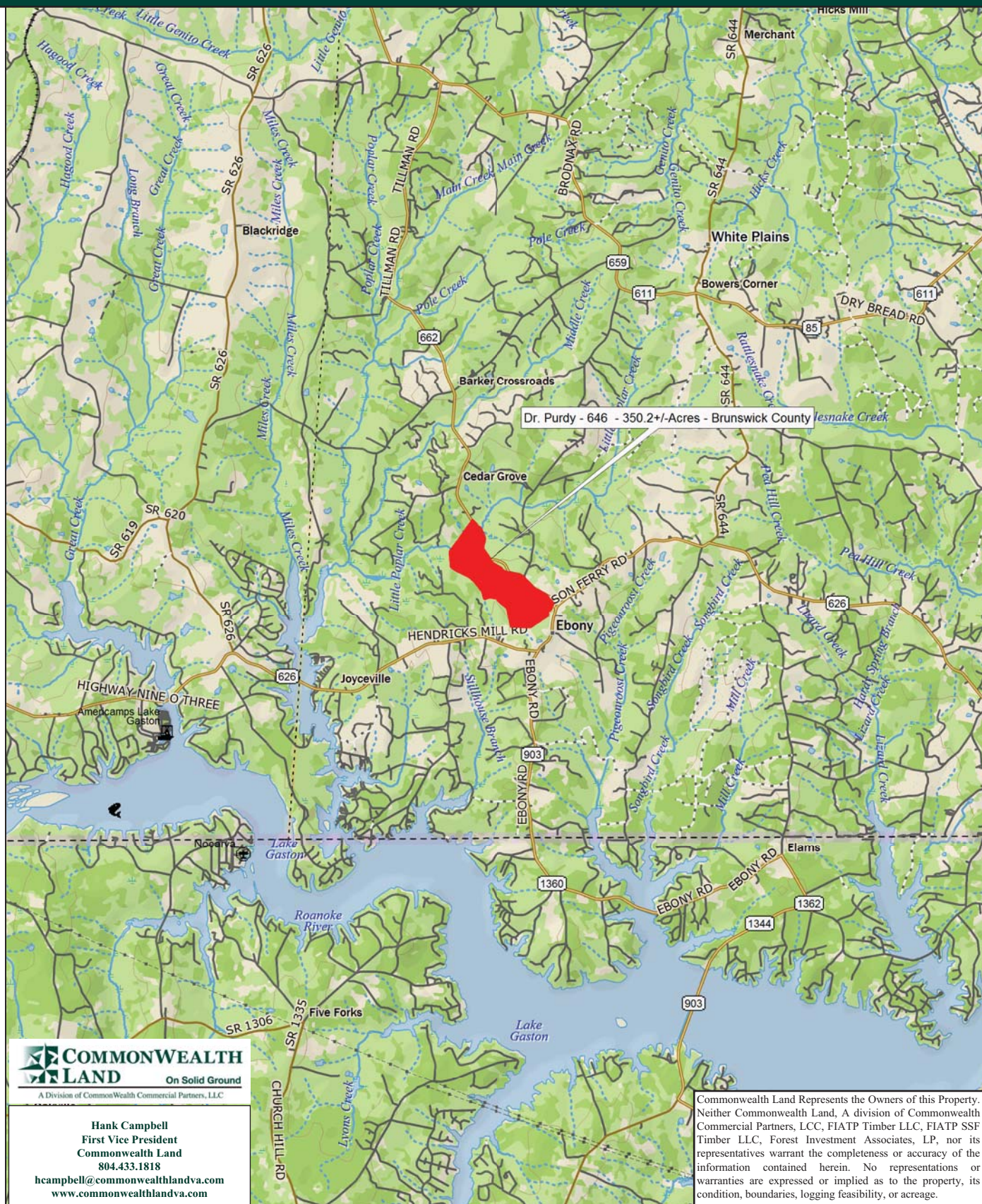


Timberland Investment Opportunity

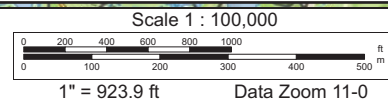
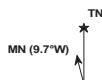
Dr. Purdy Tract - 350+/- Acres - Brunswick County, VA



Data use subject to license.

© DeLorme. XMap® 8.

www.delorme.com



Tract Summary Data

Dr. Purdy Tract - 350+/- Acres - Brunswick County, VA

***Excellent Long-Term Timberland Investment Opportunity Offering Strong Recreational Potential**

***Located at Ebony Near Lake Gaston with a Mile of Frontage Along VSR662 (Tillman Rd.).**

***Timber Comprised Primarily of Planted Loblolly Pine with 11+/-Acres Established in '88, 230+/-Acres Established in '04, 10+/-Acres Established in '08 with the Remaining Balance of the Tract in Branch Bottom**

***Currently Zoned A1 (Agricultural) and Identified as Tax Map Parcels #88-1-51 & 56.**

***N36-35.346' W77-59.999'**

***Slightly Rolling Site with a Strong Internal Road System and Frontage Along Little Poplar Creek Offering Excellent Wildlife Habitat and Strong Populations of Deer & Turkeys**

***Directions - Take I-95 South from Richmond to I-85 South and Take Exit 12 and Travel East on US58 for Almost 5 Miles. Take a Right on VSR659 (Brodnax Street) and Travel Approximately 3 Miles and Turn Right on VSR662 (Tillman Rd.) and Travel 5.65 Miles to Where the Property Begins on the Right.**

***Contact Broker For More Details**

***Offered For \$505,750**

Contact:

Hank Campbell

First Vice President

Commonwealth Land

Office: 804.433.1818

Fax: 804.346.5901

Cell: 804.334.3136

hcampbell@commonwealthlandva.com

Property Information is Available at *Commonwealthlandva.com & LandsofAmerica.com*



4198 Cox Road, Suite 200, Glen Allen, VA 23060
Mailing: P.O. Box 71150, Richmond, VA 23255
Phone: 804.433.1818 Fax: 804.346.5901
Web Site: www.commonwealthlandva.com

Commonwealth Land Represents the Owners of this Property. Neither Commonwealth Land, A division of Commonwealth Commercial Partners, LCC, FIATP Timber LLC, FIATP SSF Timber LLC, Forest Investment Associates, LP, nor its representatives warrant the completeness or accuracy of the information contained herein. No representations or warranties are expressed or implied as to the property, its condition, boundaries, logging feasibility, or acreage.

CLIENT: FIA TP SSF-WHITE PLAINS
TRACT: DR. PURDY -646
BRUNSWICK, VA ACRES: 350.28



This product is for informational purposes and may not have been presented for, or suitable for, making engineering or survey decisions. Please consult a professional for any engineering or survey decisions. To maintain the accuracy of the information.

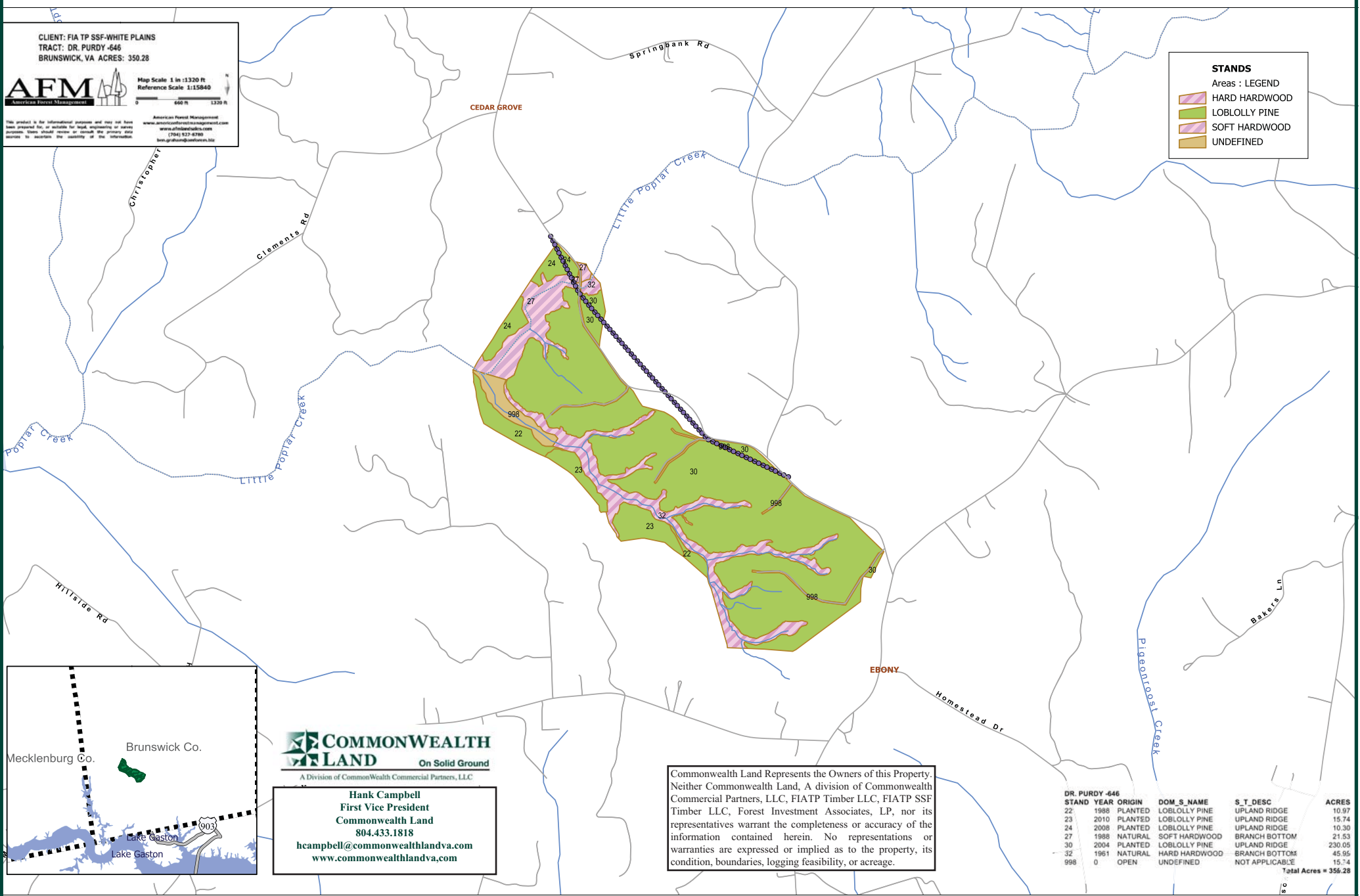
Map Scale 1 in = 1320 ft
Reference Scale 1:15840

0 660 ft 1320 ft

American Forest Management
www.americanforestmanagement.com
www.afmva.com
(704) 517-6780
info@afmva.com

STANDS

- Areas : LEGEND
- HARD HARDWOOD
 - LOBLOLLY PINE
 - SOFT HARDWOOD
 - UNDEFINED



Hank Campbell
First Vice President
Commonwealth Land
804.433.1818
hcampbell@commonwealthandva.com
www.commonwealthandva.com

Commonwealth Land Represents the Owners of this Property. Neither Commonwealth Land, A division of Commonwealth Commercial Partners, LLC, FIATP Timber LLC, FIATP SSF Timber LLC, Forest Investment Associates, LP, nor its representatives warrant the completeness or accuracy of the information contained herein. No representations or warranties are expressed or implied as to the property, its condition, boundaries, logging feasibility, or acreage.

STAND	YEAR	ORIGIN	DOM_S_NAME	S_T_DESC	ACRES
22	1988	PLANTED	LOBLOLLY PINE	UPLAND RIDGE	10.97
23	2010	PLANTED	LOBLOLLY PINE	UPLAND RIDGE	15.74
24	2008	PLANTED	LOBLOLLY PINE	UPLAND RIDGE	10.30
27	1988	NATURAL	SOFT HARDWOOD	BRANCH BOTTOM	21.53
30	2004	PLANTED	LOBLOLLY PINE	UPLAND RIDGE	230.05
32	1961	NATURAL	HARD HARDWOOD	BRANCH BOTTOM	45.95
998	0	OPEN	UNDEFINED	NOT APPLICABLE	15.74
					Total Acres = 350.28



Condition Summary Report

Parameters:

Client: FIA TP SSF
MU: WHITE PLAINS

Tract: DR. PURDY (14536440)
Compartment: DRURDY-0646

Convertability Acreage Summary of Timbered Pine Stands Acreage and Volume (Tons) By Convertability Class

Convertability	Acres	%	PINE Pulp	PINE CNS	PINE Saw	HW Pulp	HW Saw	CYP Pulp	CYP Saw
Convertible	266.94	76.2	584.89	506.62	50.15	48.92	0.00	0.00	0.00
Non-Convertible	83.18	23.8	171.89	55.37	76.99	1,381.04	1,000.71	0.00	0.00
	350.12		756.78	561.99	127.14	1,429.96	1,000.71	0.00	0.00

Pre-Merchantable Acreage Summary of Timbered Pine Stands Acres By Established Year and Establishment Type

Year Established	Stand Age	Planted Acres	Natural Acres	Total Acres
2010	2	15.74	0.00	15.74
2008	4	10.29	0.00	10.29
2004	8	229.94	0.00	229.94
Pre-Merchantable Total		255.97	0.00	255.97

Timber Type Summary - Acreage By Timber Type

Timber Type	Acres
Hardwood	67.45
Non-Forest	15.73
Pine Planted	266.94
Total	350.12



A Division of Commonwealth Commercial Partners, LLC

Hank Campbell
First Vice President
Commonwealth Land
804.433.1818
hcampbell@commonwealthlandva.com
www.commonwealthlandva.com

Commonwealth Land Represents the Owners of this Property. Neither Commonwealth Land, A division of Commonwealth Commercial Partners, LCC, FIATP Timber LLC, FIATP SSF Timber LLC, Forest Investment Associates, LP, nor its representatives warrant the completeness or accuracy of the information contained herein. No representations or warranties are expressed or implied as to the property, its condition, boundaries, logging feasibility, or acreage.



Forest Investment Associates Stand Volume Summary Report

Report: Stand Volume Summary

Management Unit: WHITE PLAINS

Report Date: Monday, September 17, 2012 10:30 am

Tract: DR. PURDY (14536440)

Client: FIA TP SSF

Units: Per Acre

Client: FIA TP SSF Management Unit: WHITE PLAINS Tract Code: 14536440 Tract Name: DR. PURDY (14536440)

Comp	Std	Desc	Acres	Year			Pine						Hardwood					Cypress				
				Est	SQ	Ht	TPA	BA	Pulp	CNS	Saw	Total	TPA	BA	Pulp	Saw	Total	TPA	BA	Pulp	Saw	Total
646	22	LBURPY1P	10.96	1988	82	69.9	440.9	192.7	53.3	46.2	4.6	104.1	92.8	19.0	4.5	0.0	4.5	0.0	0.0	0.0	0.0	0.0
646	23	LBURPY1P	15.74	2010	65	0.0	544.0	0.0	0.0	0.0	0.0	0.0	0.0	0.0	0.0	0.0	0.0	0.0	0.0	0.0	0.0	
646	24	LBURPY1P	10.29	2008	72	0.0	396.0	0.0	0.0	0.0	0.0	0.0	0.0	0.0	0.0	0.0	0.0	0.0	0.0	0.0	0.0	
646	27	SHBBNN5P	21.52	1988	53	28.4	12.7	7.8	2.2	0.1	3.6	5.8	101.1	58.2	29.2	12.3	41.6	0.0	0.0	0.0	0.0	0.0
646	30	LBURPY1P	229.94	2004	62	0.0	650.0	0.0	0.0	0.0	0.0	0.0	0.0	0.0	0.0	0.0	0.0	0.0	0.0	0.0	0.0	
646	32	HHBBNN5P	45.93	1961	68	20.6	15.2	7.0	2.7	1.2	0.0	3.9	103.8	72.2	16.4	16.0	32.4	0.0	0.0	0.0	0.0	0.0
646	998	UDNAON4P	15.73	0	0	0.0	0.0	0.0	0.0	0.0	0.0	0.0	0.0	0.0	0.0	0.0	0.0	0.0	0.0	0.0	0.0	

Grand Total 350.12



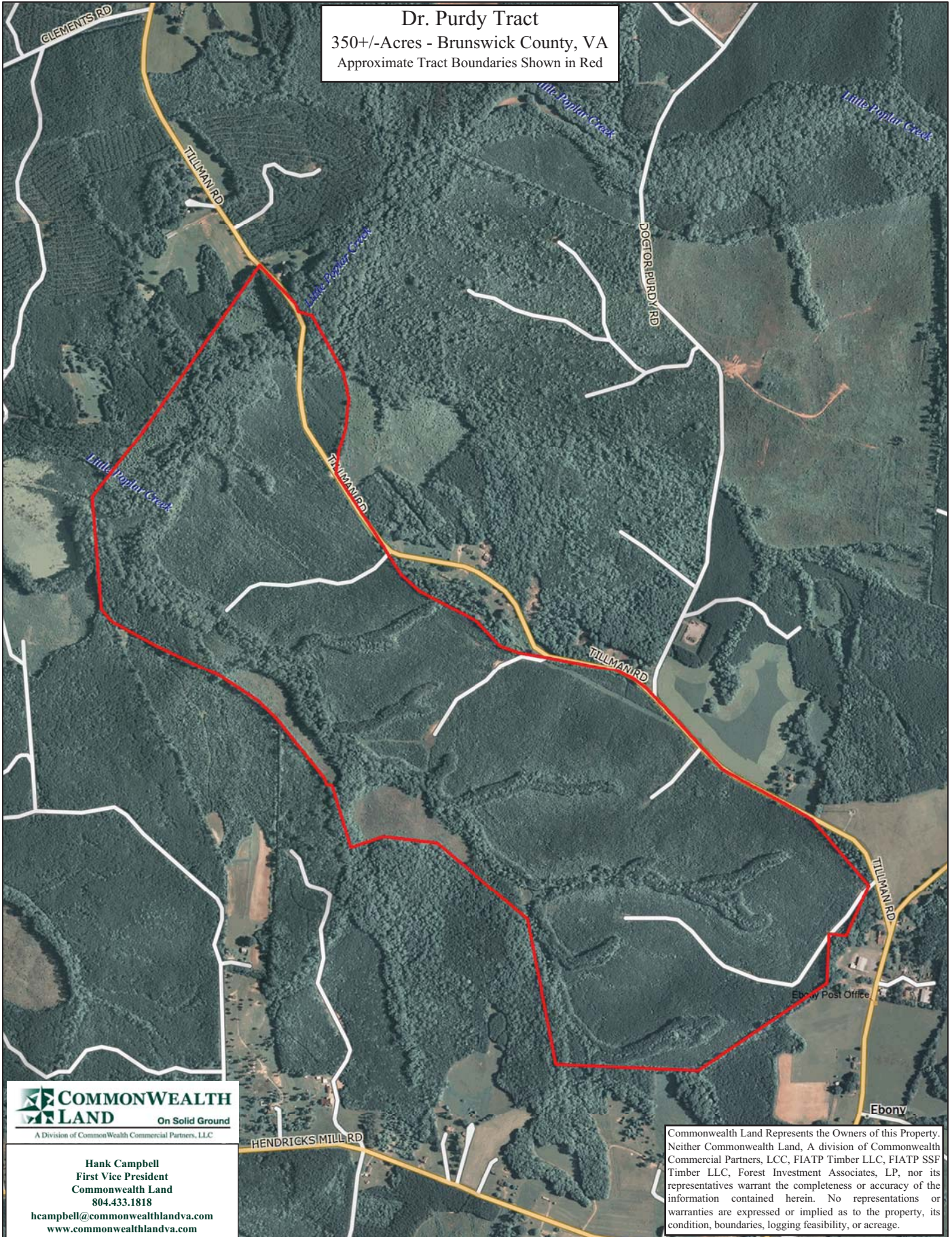
Hank Campbell
First Vice President
Commonwealth Land
804.433.1818
hcampbell@commonwealthandva.com
www.commonwealthandva.com

for the stand and Pulp, CNS, Saw and Tot are per acre values. The pulp column may include topwood volume.

y.rpt

Commonwealth Land Represents the Owners of this Property. Neither Commonwealth Land, A division of Commonwealth Commercial Partners, LLC, FIATP Timber LLC, FIATP SSF Timber LLC, Forest Investment Associates, LP, nor its representatives warrant the completeness or accuracy of the information contained herein. No representations or warranties are expressed or implied as to the property, its condition, boundaries, logging feasibility, or acreage.

Dr. Purdy Tract
350+/-Acres - Brunswick County, VA
Approximate Tract Boundaries Shown in Red



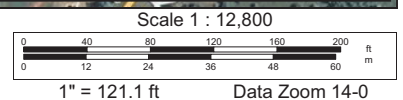
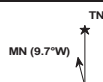
Hank Campbell
First Vice President
Commonwealth Land
804.433.1818
hcampbell@commonwealthlandva.com
www.commonwealthlandva.com

Commonwealth Land Represents the Owners of this Property. Neither Commonwealth Land, A division of Commonwealth Commercial Partners, LCC, FIATP Timber LLC, FIATP SSF Timber LLC, Forest Investment Associates, LP, nor its representatives warrant the completeness or accuracy of the information contained herein. No representations or warranties are expressed or implied as to the property, its condition, boundaries, logging feasibility, or acreage.

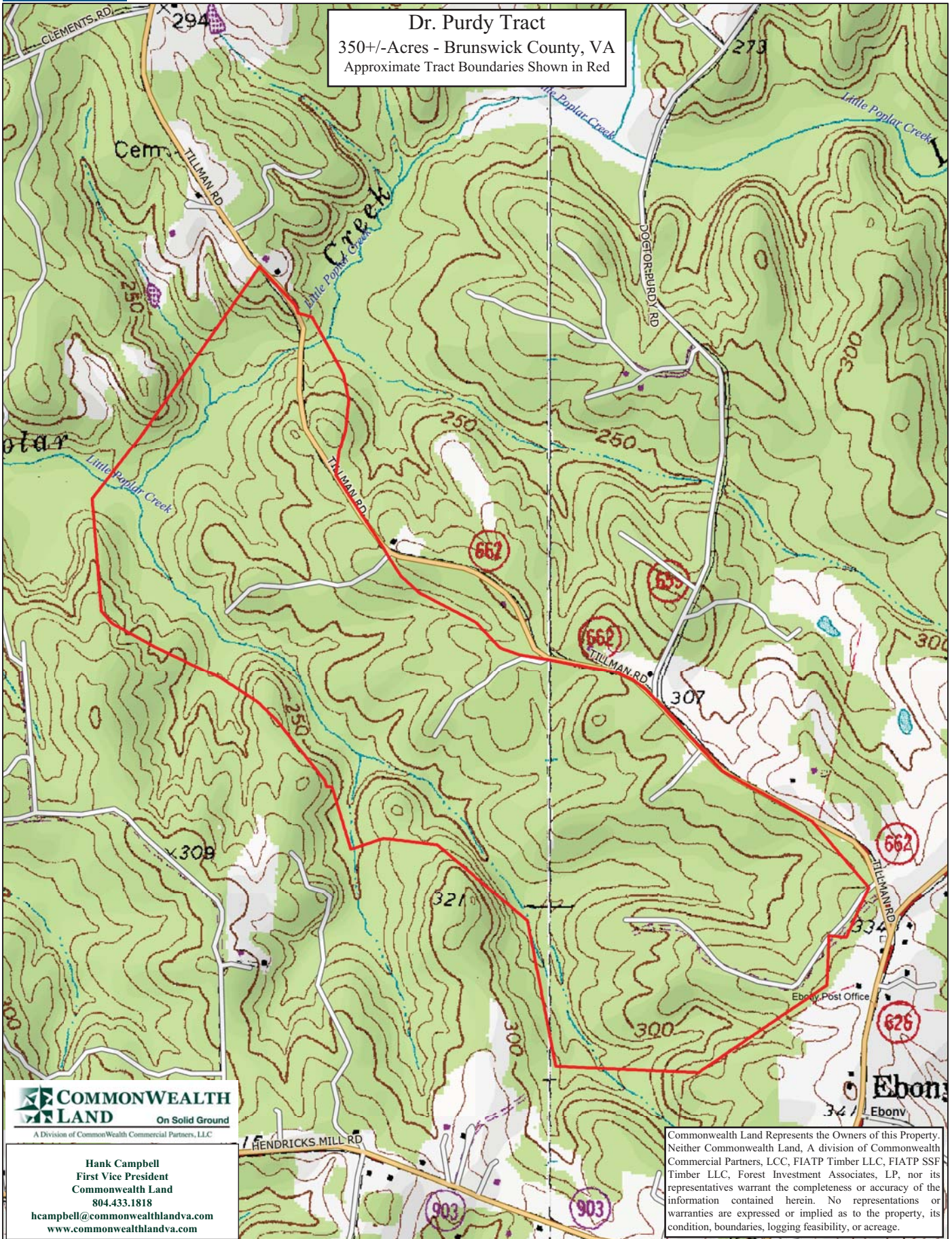
Data use subject to license.

© DeLorme. XMap® 8.

www.delorme.com



Dr. Purdy Tract
350+/-Acres - Brunswick County, VA
Approximate Tract Boundaries Shown in Red



COMMONWEALTH LAND
On Solid Ground
A Division of Commonwealth Commercial Partners, LLC

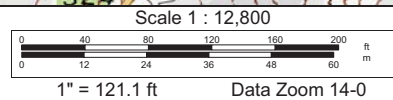
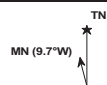
Hank Campbell
First Vice President
Commonwealth Land
804.433.1818
hcampbell@commonwealthlandva.com
www.commonwealthlandva.com

Commonwealth Land Represents the Owners of this Property. Neither Commonwealth Land, A division of Commonwealth Commercial Partners, LCC, FIATP Timber LLC, FIATP SSF Timber LLC, Forest Investment Associates, LP, nor its representatives warrant the completeness or accuracy of the information contained herein. No representations or warranties are expressed or implied as to the property, its condition, boundaries, logging feasibility, or acreage.

Data use subject to license.

© DeLorme. XMap® 8.

www.delorme.com



Dr. Purdy Photos



Hank Campbell
First Vice President
Commonwealth Land
804.433.1818
hcampbell@commonwealthlandva.com
www.commonwealthlandva.com

Commonwealth Land Represents the Owners of this Property. Neither Commonwealth Land, A division of Commonwealth Commercial Partners, LCC, FIATP Timber LLC, FIATP SSF Timber LLC, Forest Investment Associates, LP, nor its representatives warrant the completeness or accuracy of the information contained herein. No representations or warranties are expressed or implied as to the property, its condition, boundaries, logging feasibility, or acreage.