

Property Details

Monument Road

Type: Real Estate
Acres: 108
Total Price: \$199,800.00
Price/Acre: \$1,850.00
Status: New Listing - Active
State: SC
County: Newberry

Agent Details



Steve McMillan
803-451-2175

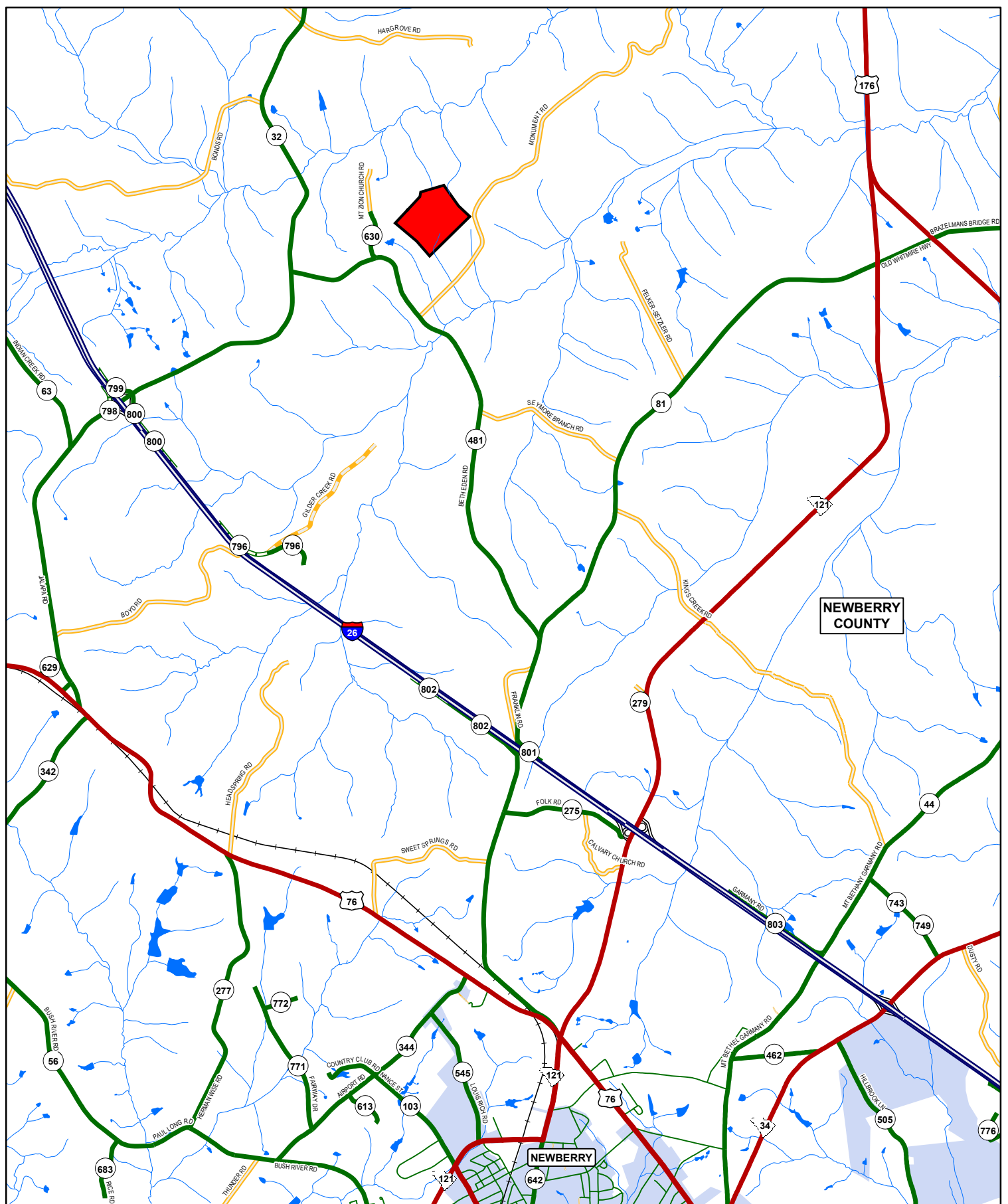
Description:

This 108± acre of land for sale in Newberry County, SC (<http://www.millikenforestry.com/Services2/RealEstaeListings.aspx>) is located 30 miles from Chapin, SC. It features an excellent road system on rolling hills surrounded by beautiful National Forest on three sides. Not only is this land scenic, but it is just the right size. The timber consists of planted pine and pockets of natural hardwoods. The pines are almost ready for a first thinning.

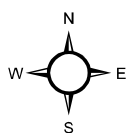
For hunters, this property is perfect (<http://www.millikenforestry.com/Services/WildlifeRecreationalMamagement.aspx>). Deer, turkey and small game are plentiful in this area, and there are several spots that could be planted for wildlife.

If you are interested in this property and want to understand more about why this tract would be right for you, please contact Steve McMillan at 803-788-0590 (office)/ 803-730-9691 (cell) or at mcmillan@millikenforestry.com

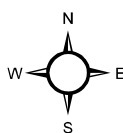
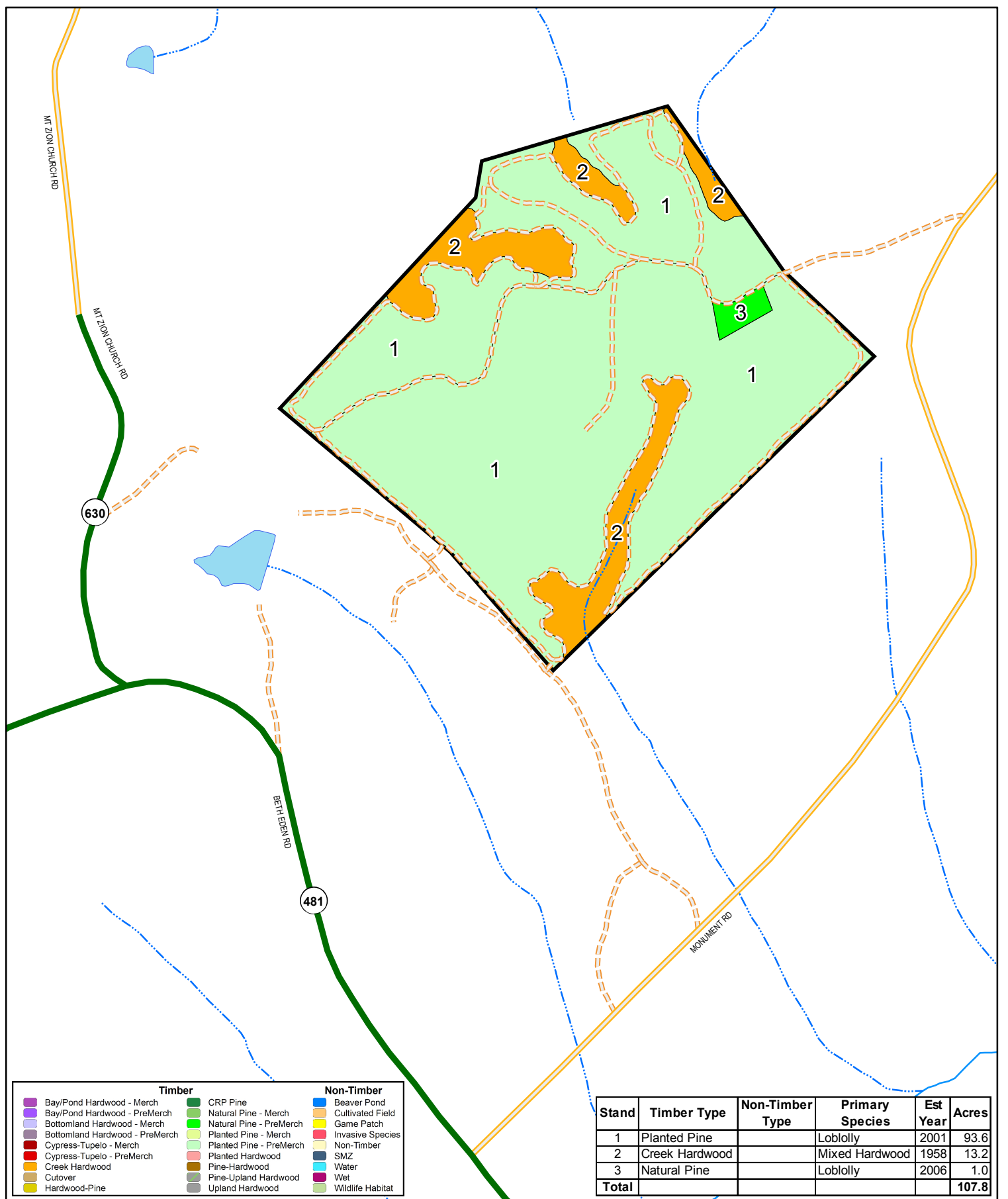


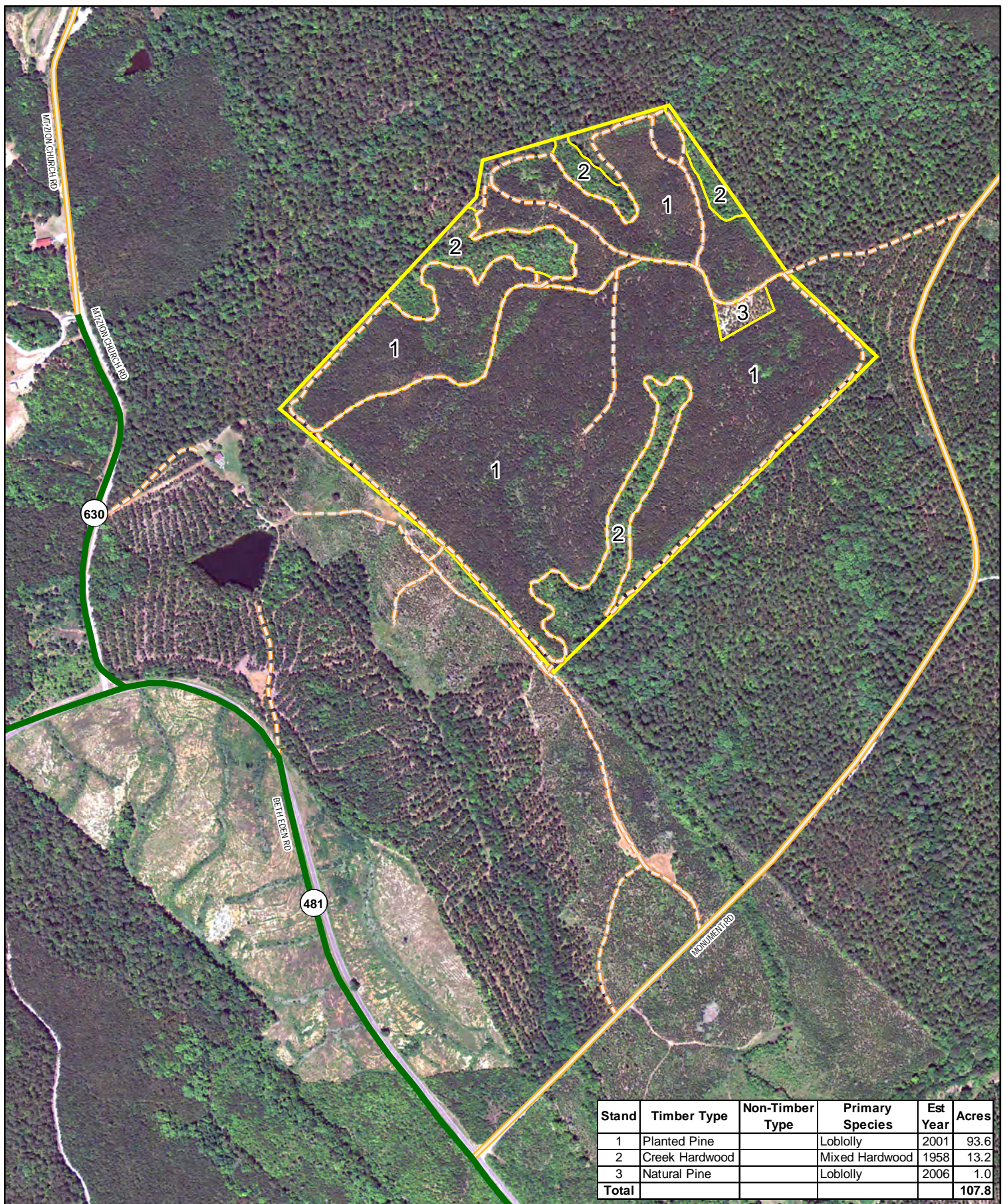


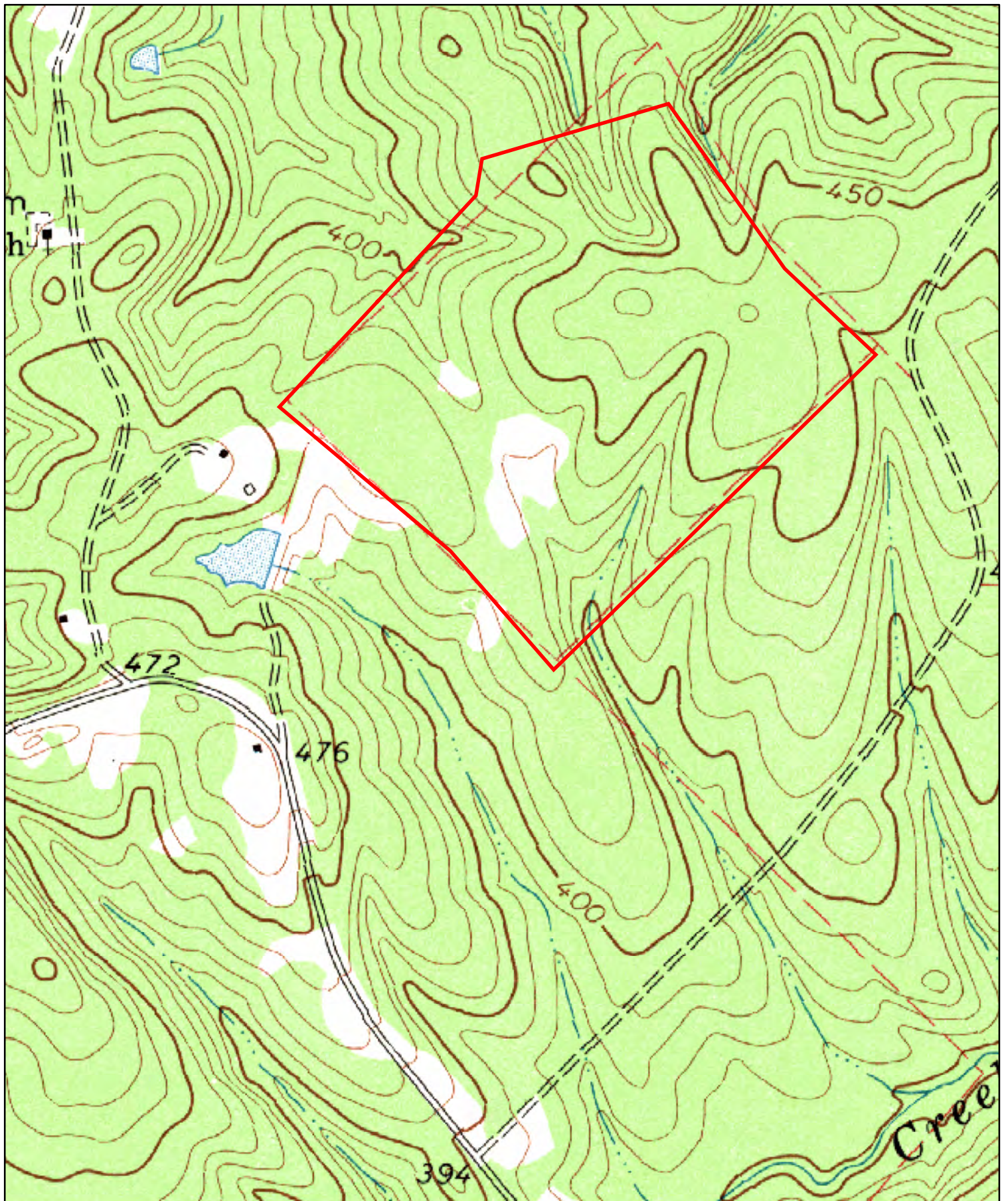
**MILLIKEN
FORESTRY**
WWW.MILLIKENFORESTRY.COM



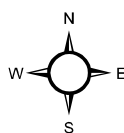
Location Map
Charles Carpenter
Tract 453
107.8± Plat Acres
Newberry County, SC
May 2012







**MILLIKEN
FORESTRY**
WWW.MILLIKENFORESTRY.COM



0 660
Feet

Topographic Map
Charles Carpenter
Tract 453
107.8± Plat Acres
Newberry County, SC
May 2012