

## Property Details

### Tract #8921

**Type:** Real Estate  
**Acres:** 84  
**Total Price:** \$184,380.00  
**Price/Acre:** \$2,195.00  
**Status:** Reduced  
**State:** SC  
**County:** Chesterfield

### Agent Details



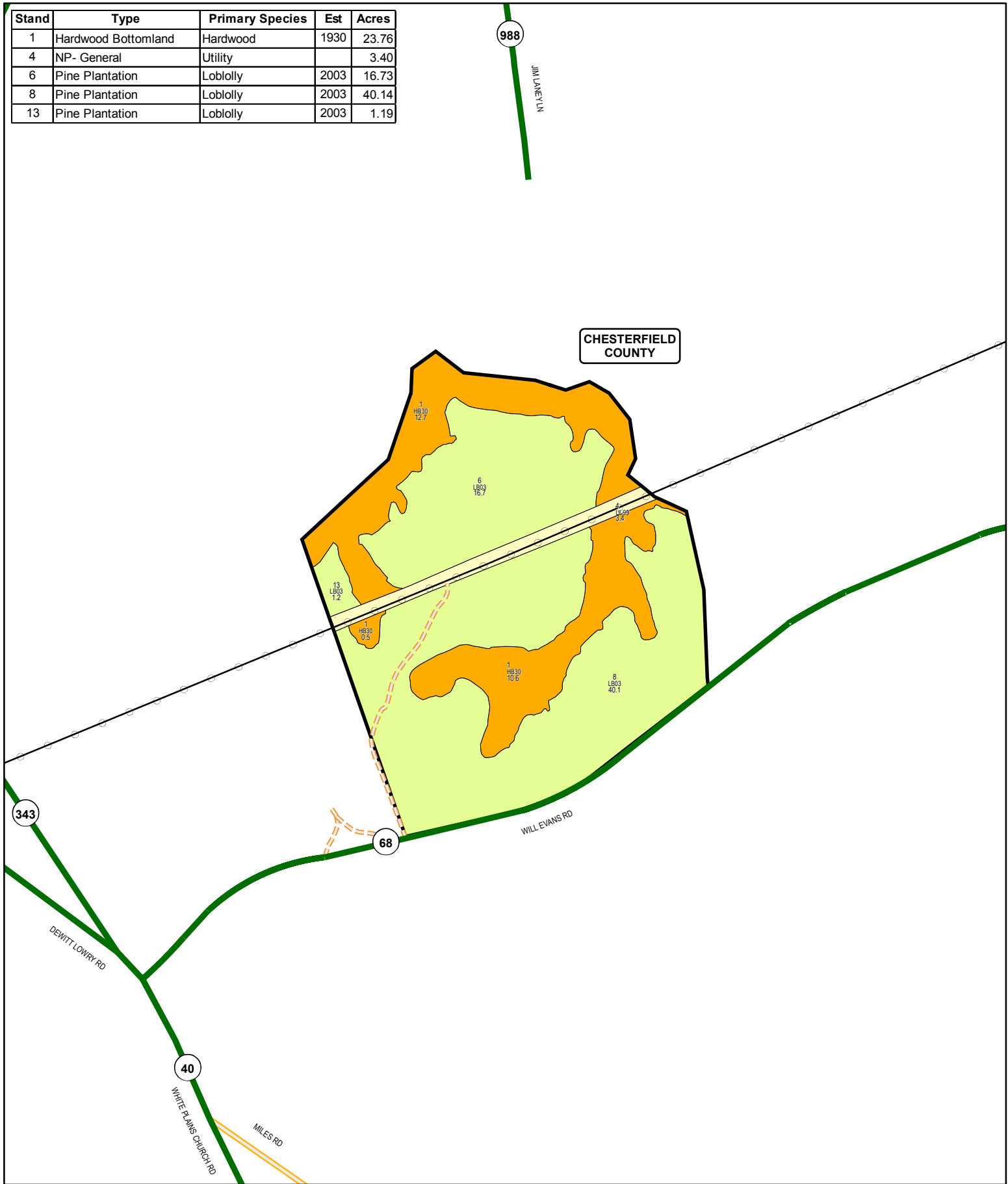
Kent Jewell  
803-320-3708

### Description:

Great Chesterfield County Tract!!! Paved Road, pond on property, ideal for hunting. Powerline runs thru property. Please contact Kent Jewell at 803-320-3708 for more details.

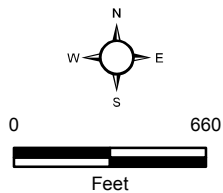


Stand	Type	Primary Species	Est	Acres
1	Hardwood Bottomland	Hardwood	1930	23.76
4	NP- General	Utility		3.40
6	Pine Plantation	Loblolly	2003	16.73
8	Pine Plantation	Loblolly	2003	40.14
13	Pine Plantation	Loblolly	2003	1.19



Map Produced By  
Milliken Forestry Company, Inc.

Owners and owners agents make no  
claims as to the accuracy of this map.

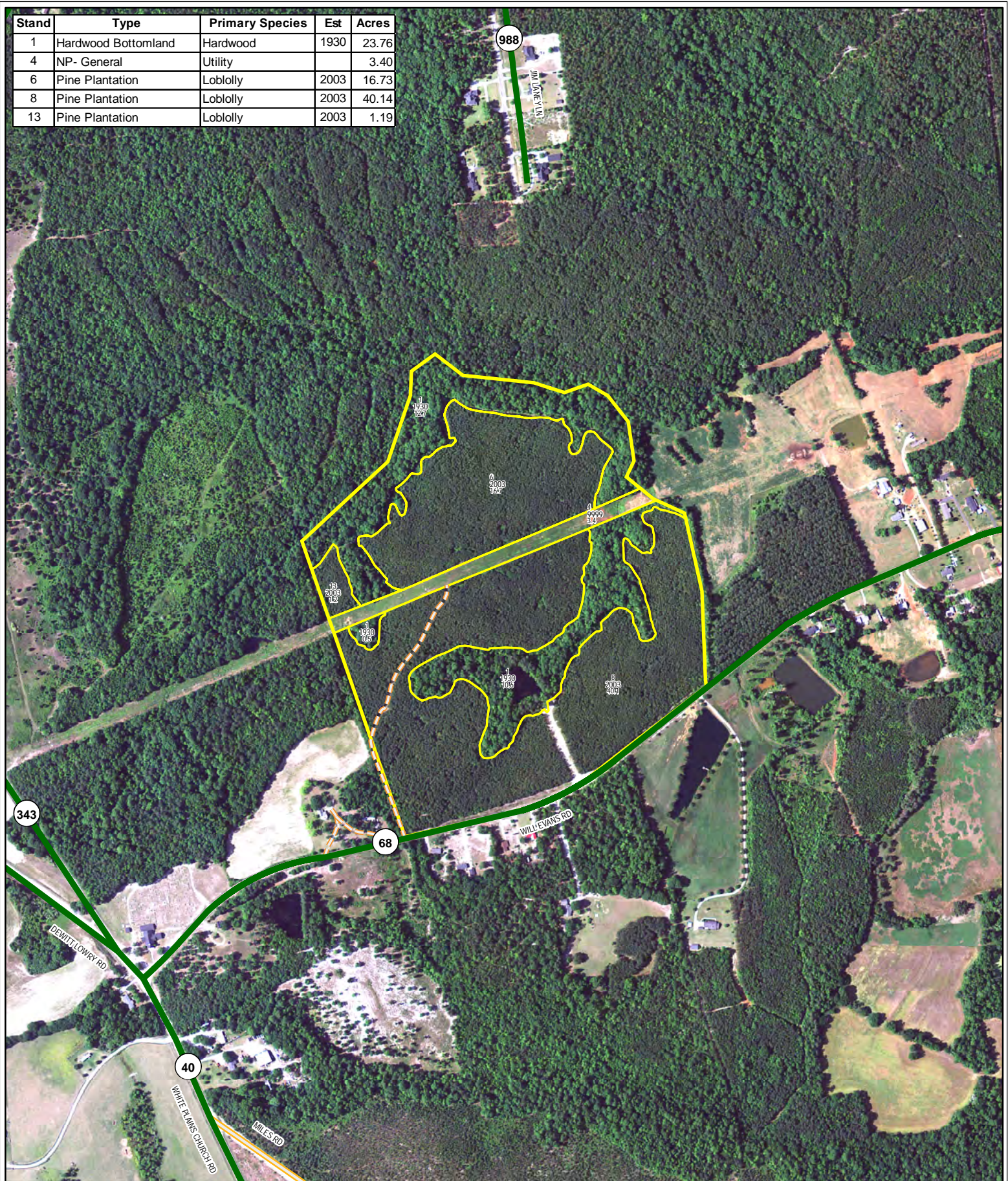


Hardwood	Cutover
Non-Timber	Natural Pine
Water	Planted Pine

Timber Type Map  
TER - BT4  
Tract: 8921  
85.23± GIS Acres  
Chesterfield County, SC  
February 2013

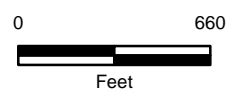
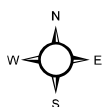


Stand	Type	Primary Species	Est	Acres
1	Hardwood Bottomland	Hardwood	1930	23.76
4	NP- General	Utility		3.40
6	Pine Plantation	Loblolly	2003	16.73
8	Pine Plantation	Loblolly	2003	40.14
13	Pine Plantation	Loblolly	2003	1.19



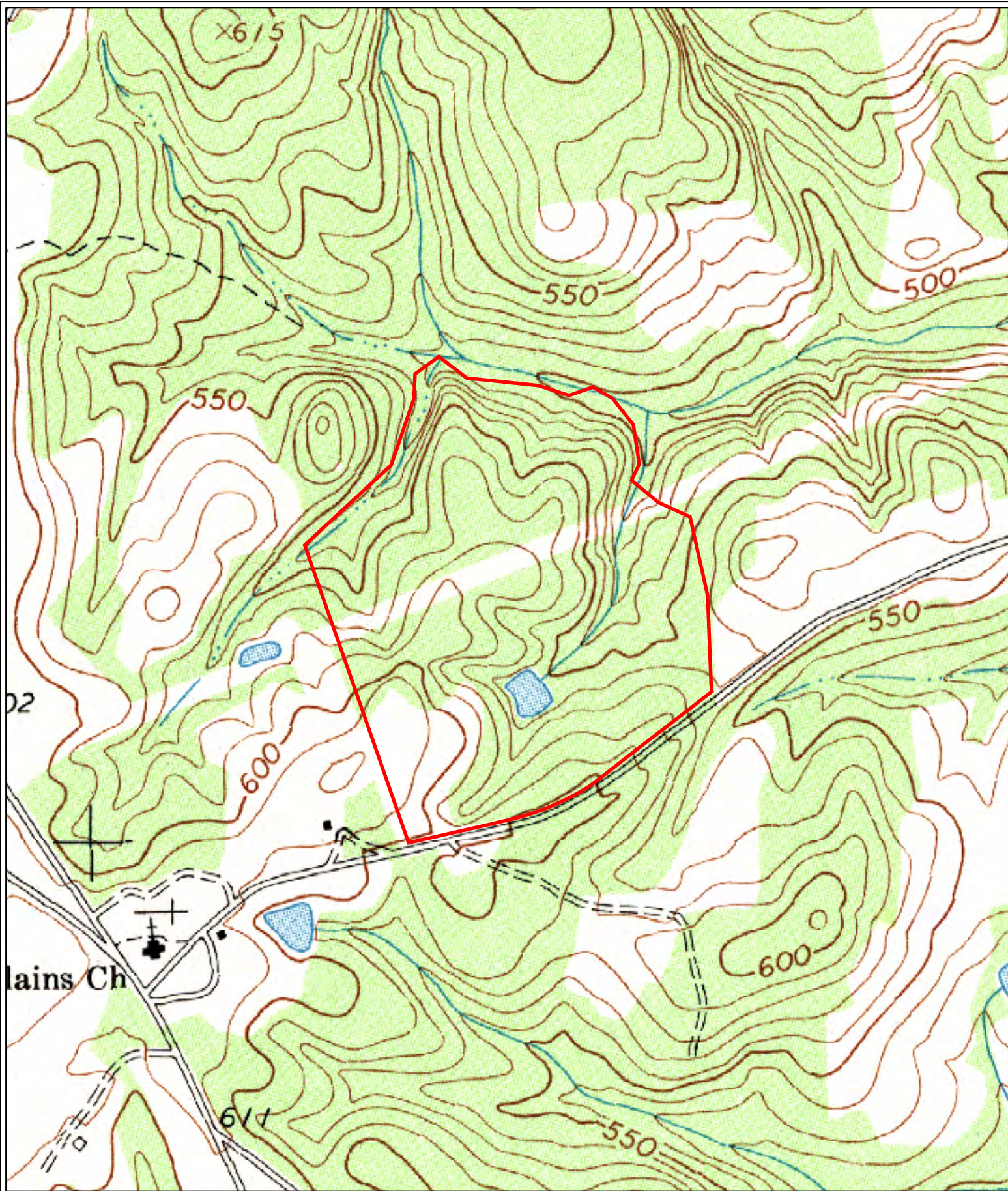
Map Produced By  
Milliken Forestry Company, Inc.

Owners and owners agents make no  
claims as to the accuracy of this map.



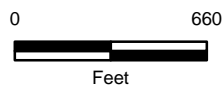
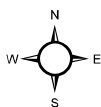
2011 Aerial Photography Map  
TER - BT4  
Tract: 8921  
85.23± GIS Acres  
Chesterfield County, SC  
February 2013





Map Produced By  
Milliken Forestry Company, Inc.

Owners and owners agents make no  
claims as to the accuracy of this map.



Topographic Map  
TER - BT4  
Tract: 8921  
85.23± GIS Acres  
Chesterfield County, SC  
February 2013