

Market Realty, Inc.

(979)289-2159
Fax (979)289-2159

420 N Main
Burton, Texas 77835
www.marketrealty.com

e-mail address
burton@marketrealty.com



12500 Young Ln/Carmine, TX
\$157,269

Peaceful wooded retreat between Burton and Carmine with pond and secluded location. Property is about 7 miles north of Burton which is conveniently located halfway between Houston and Austin, only 10 minutes from antique capitol, Round Top, Texas. Property has lots of post oaks, sandy soil and there's an electric line in place. Several potential home sites overlooking the pond. Seller to convey 100% owned minerals and royalties. For more information contact Susan Kiel at 979-251-4078 or Roger Chambers at 979-830-7708.

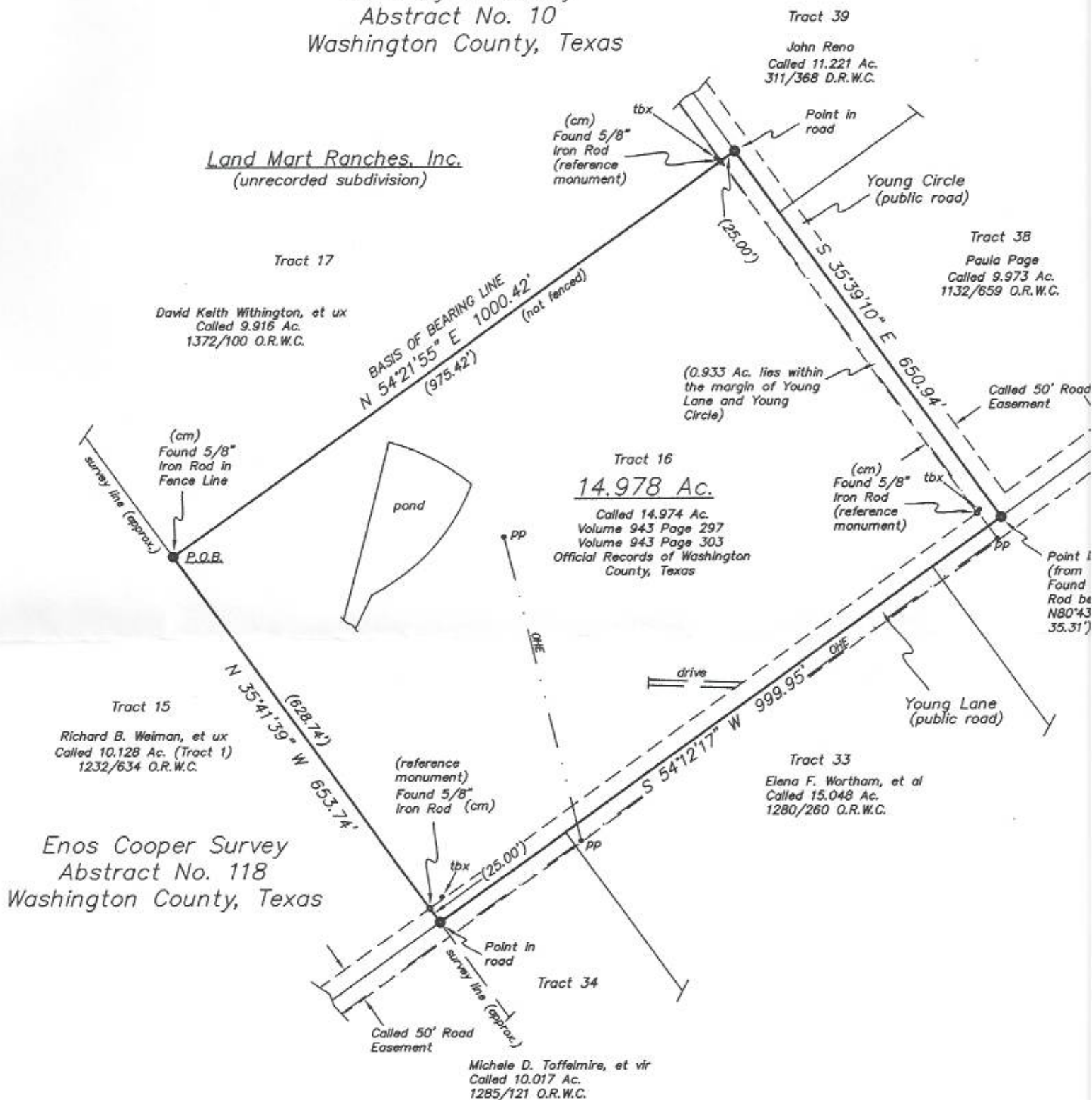
Directions: From Brenham head west on Hwy 290 towards Austin. Exit right in Burton at Spur 125. Follow into town. Just past the Burton High School turn left on to FM 1697. Turn left on to Sandtown Rd. Turn right on to Young Ln. Property is on the left, sign by the gate.

"THE MARKET TEAM"
Roger Chambers, Broker and Susan S. Kiel, Broker Associate

The information contained herein, while obtained from sources deemed reliable, is not warranted by MARKET REALTY, INC.
Property is subject to prior sale, change, or withdrawal from market without notice.

David Ayers Survey
Abstract No. 10
Washington County, Texas

Land Mart Ranches, Inc.
(unrecorded subdivision)





Lines are an approximation
of boundaries