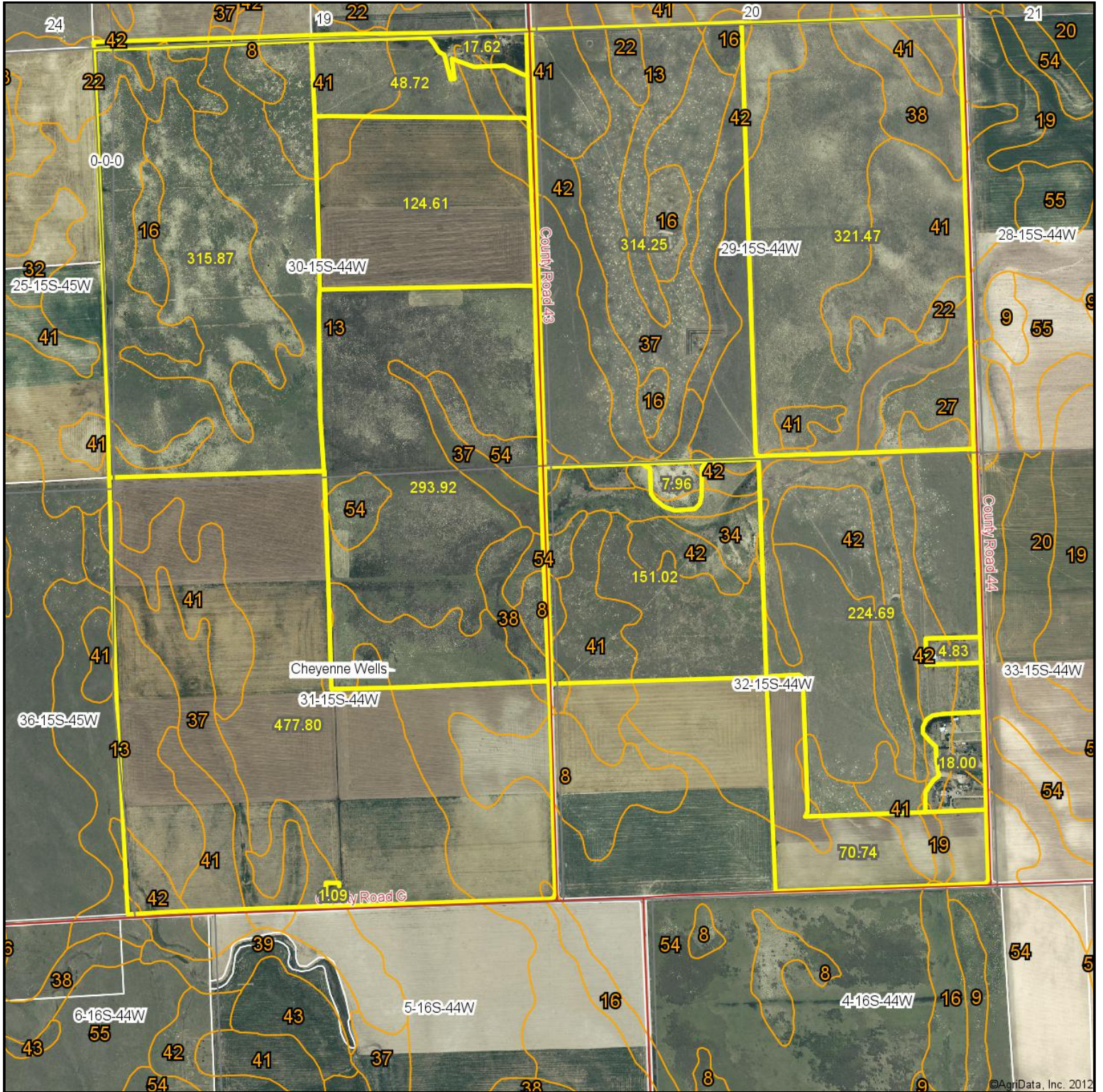


Aerial Map



Maps provided by:



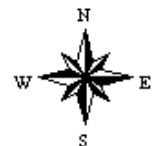
©AgriData, Inc. 2012

www.AgriDataInc.com

31-15S-44W
Cheyenne County
Colorado

map center: 38° 42' 30.26, 102° 22' 7.82

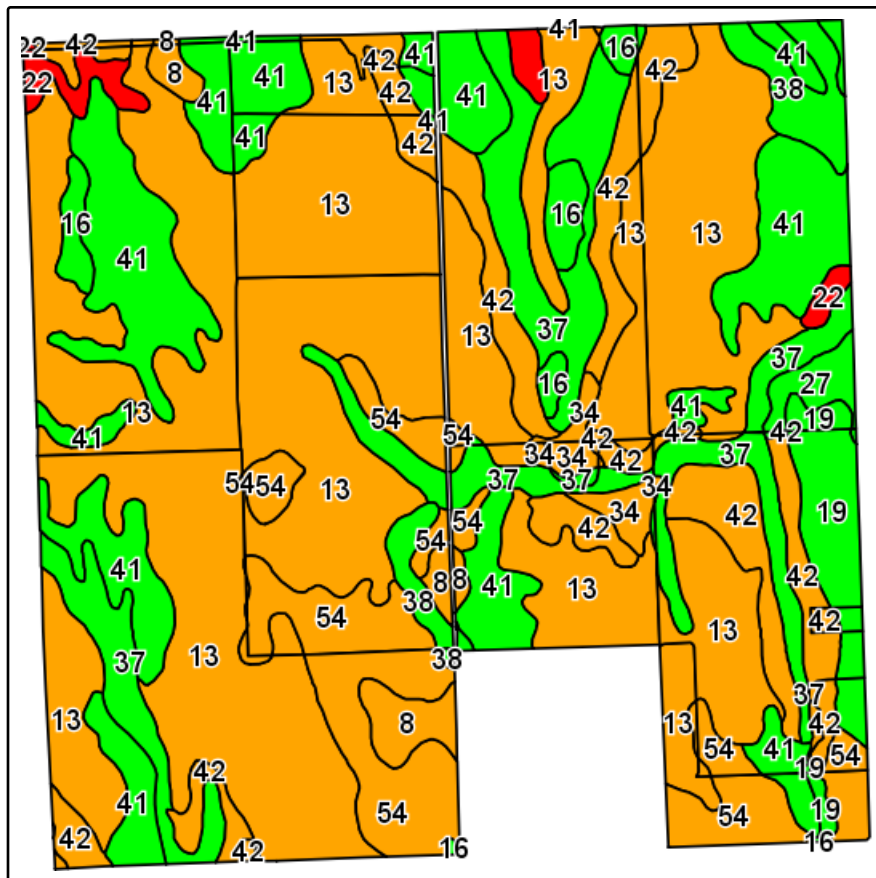
scale: 20095



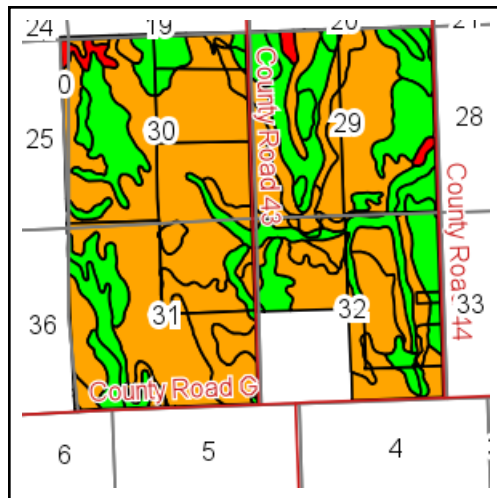
3/4/2013

Field borders provided by Farm Service Agency as of 5/21/2008. Aerial photography provided by Aerial Photography Field Office.

Soils Map



Field borders provided by Farm Service Agency as of 5/21/2008.
Soils data provided by USDA and NRCS.



State: **Colorado**
County: **Cheyenne**
Location: **31-15S-44W**
Township: **Cheyenne Wells**
Acres: **2392.6**
Date: **3/4/2013**



Maps provided by:



©AgriData, Inc 2012
www.AgriDataInc.com

Code	Soil Description	Acres	Percent of field	Non-Irr Class Legend	Non-Irr Class	Irr Class	Grain sorghum	Wheat	Winter wheat
13	Fort Collins loam, 0 to 3 percent slopes	1135.7	47.5%		IVc	Ile		24	
41	Stoneham loam, 0 to 3 percent slopes	358.2	15.0%		IIIe	Ile	18	18	
37	Sampson loam, 0 to 2 percent slopes	225.2	9.4%		IIIc	Ile	30	25	
42	Stoneham loam, 3 to 6 percent slopes	212.8	8.9%		IVe	IVe	16	16	
54	Wiley complex, 0 to 3 percent slopes, eroded	202.1	8.4%		IVe	Ile	18	20	
19	Keith-Richfield silt loams, 0 to 2 percent slopes	61.3	2.6%		IIIe	Ile			
38	Satanta loam, 0 to 3 percent slopes	50.1	2.1%		IIIe	Ile	25		22
16	Goshen silt loam, 0 to 1 percent slopes	37.6	1.6%		IIIc	I	35		35
8	Colby silt loam, 1 to 4 percent slopes, eroded	37.1	1.6%		IVe	Ile	15		14
22	Kim loam, 3 to 12 percent slopes	30.7	1.3%		VIe	IVe	15	17	
34	Otero-Olney sandy loams, 3 to 6 percent slopes, eroded	24.6	1.0%		IVe	IIIe	15	15	
27	Manter sandy loam, 1 to 3 percent slopes	17.2	0.7%		IIIe	IIIe	20	25	
Weighted Average							10.3	20.1	1.2

Aerial Map



©AgriData, Inc. 2012



Maps provided by:



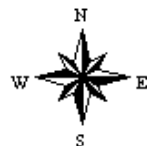
©AgriData, Inc. 2012

www.AgriDataInc.com

4-15S-45W
Cheyenne County
Colorado

map center: 38° 46' 30.66, 102° 27' 11.44

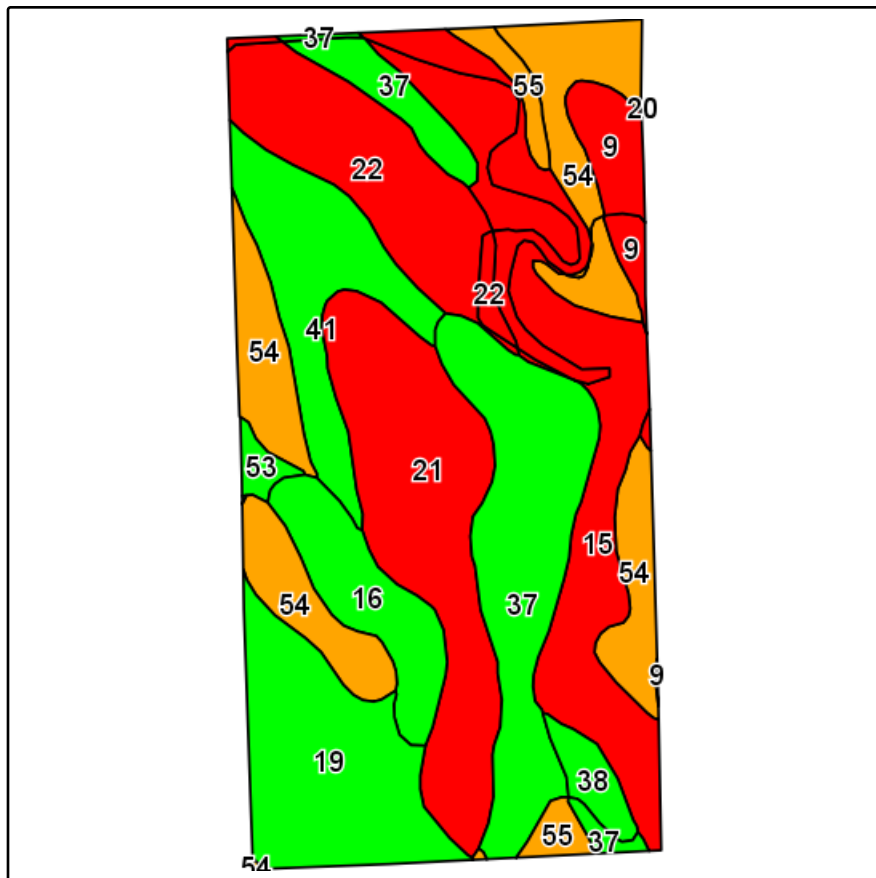
scale: 8980



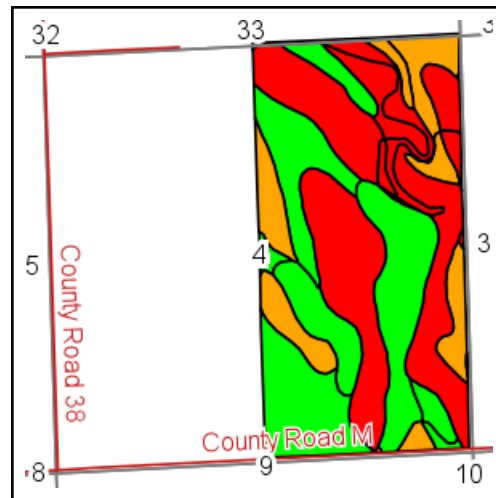
3/4/2013

Field borders provided by Farm Service Agency as of 5/21/2008. Aerial photography provided by Aerial Photography Field Office.

Soils Map



Field borders provided by Farm Service Agency as of 5/21/2008.
Soils data provided by USDA and NRCS.



State: **Colorado**
County: **Cheyenne**
Location: **4-15S-45W**
Township: **Cheyenne Wells**
Acres: **315.8**
Date: **3/4/2013**



Maps provided by:



©AgriData, Inc 2012
www.AgriDataInc.com

Code	Soil Description	Acres	Percent of field	Non-Irr Class Legend	Non-Irr Class	Irr Class	Grain sorghum	Wheat	Winter wheat
15	Glenberg-Bankard complex, 0 to 1 percent slopes	52.5	16.6%		Vw	Ilw	16	18	
37	Sampson loam, 0 to 2 percent slopes	46.6	14.8%		IIIc	Ile	30	25	
54	Wiley complex, 0 to 3 percent slopes, eroded	45.1	14.3%		IVe	Ile	18	20	
21	Kim loam, 1 to 3 percent slopes, eroded	44.8	14.2%		Vle	Ile	13	15	
19	Keith-Richfield silt loams, 0 to 2 percent slopes	33.1	10.5%		IIIe	Ile			
22	Kim loam, 3 to 12 percent slopes	30.7	9.7%		Vle	IVe	15	17	
41	Stoneham loam, 0 to 3 percent slopes	25	7.9%		IIIe	Ile	18	18	
16	Goshen silt loam, 0 to 1 percent slopes	16.2	5.1%		IIIc	I	35		35
9	Colby silt loam, 4 to 12 percent slopes	9.2	2.9%		Vle	Vle			
55	Wiley complex, 3 to 5 percent slopes, eroded	5.8	1.8%		IVe	IIIe	17	15	
38	Satanta loam, 0 to 3 percent slopes	4.6	1.4%		IIIe	Ile	25		22
53	Weld silt loam, 0 to 1 percent slopes	2.2	0.7%		IIIe	Ils			
Weighted Average							16.8	15	2.1

Aerial Map



ROCKING X
LAND COMPANY LTD.

Maps provided by:



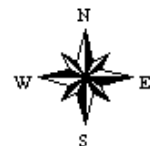
©AgriData, Inc. 2012

www.AgriDataInc.com

7-15S-44W
Cheyenne County
Colorado

map center: 38° 45' 42.7, 102° 22' 42.54

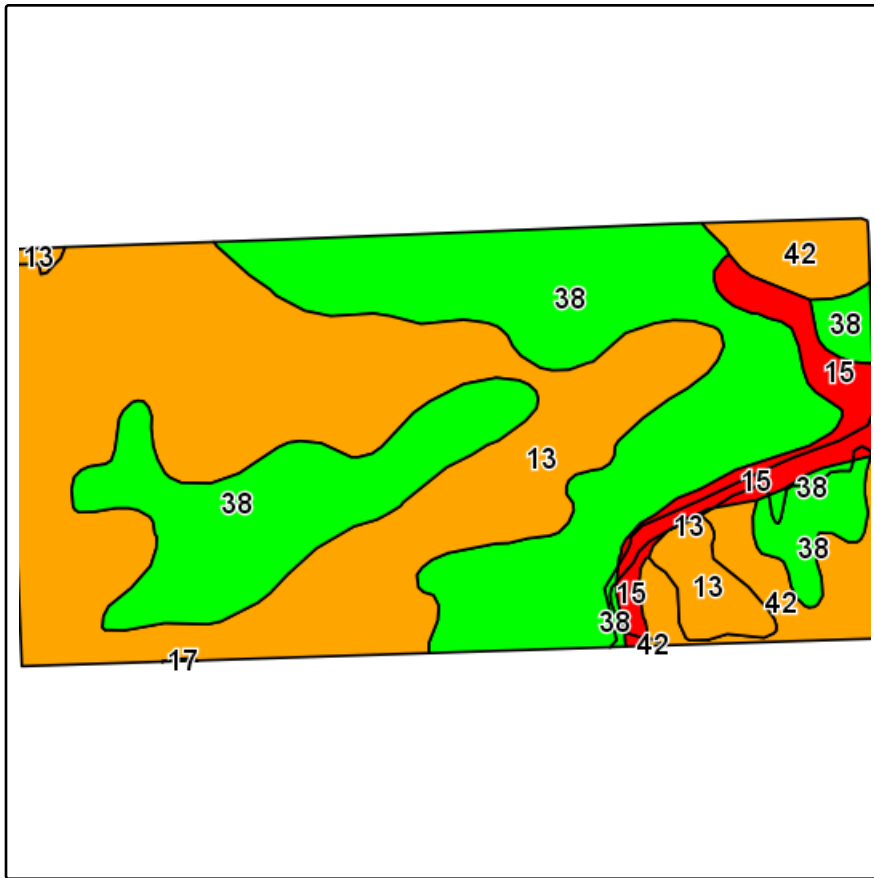
scale: 8770



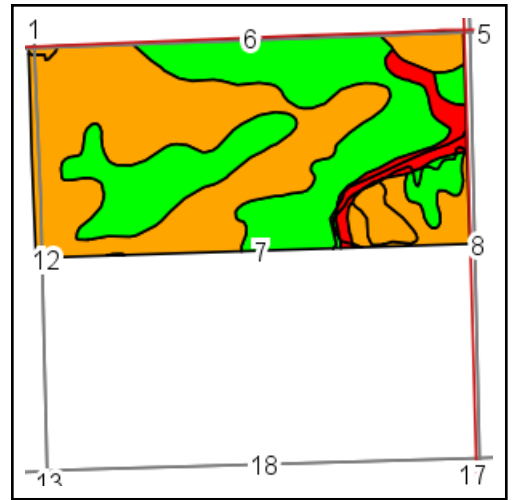
3/4/2013

Field borders provided by Farm Service Agency as of 5/21/2008. Aerial photography provided by Aerial Photography Field Office.

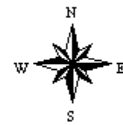
Soils Map



Field borders provided by Farm Service Agency as of 5/21/2008.
Soils data provided by USDA and NRCS.



State: **Colorado**
County: **Cheyenne**
Location: **7-15S-44W**
Township: **Cheyenne Wells**
Acres: **326.2**
Date: **3/4/2013**



Maps provided by:



Code	Soil Description	Acres	Percent of field	Non-Irr Class Legend	Non-Irr Class	Irr Class	Grain sorghum	Wheat	Winter wheat
13	Fort Collins loam, 0 to 3 percent slopes	148.3	45.4%		IVc	Ile		24	
38	Satanta loam, 0 to 3 percent slopes	137.9	42.3%		IIIe	Ile	25		22
42	Stoneham loam, 3 to 6 percent slopes	24.1	7.4%		IVe	IVe	16	16	
15	Glenberg-Bankard complex, 0 to 1 percent slopes	15.9	4.9%		Vw	IIw	16	18	
Weighted Average							12.5	13	9.3

Aerial Map



©AgriData, Inc. 2012



Maps provided by:



©AgriData, Inc. 2012

www.AgriDataInc.com

18-15S-44W
Cheyenne County
Colorado

map center: 38° 44' 50.36, 102° 22' 42.29

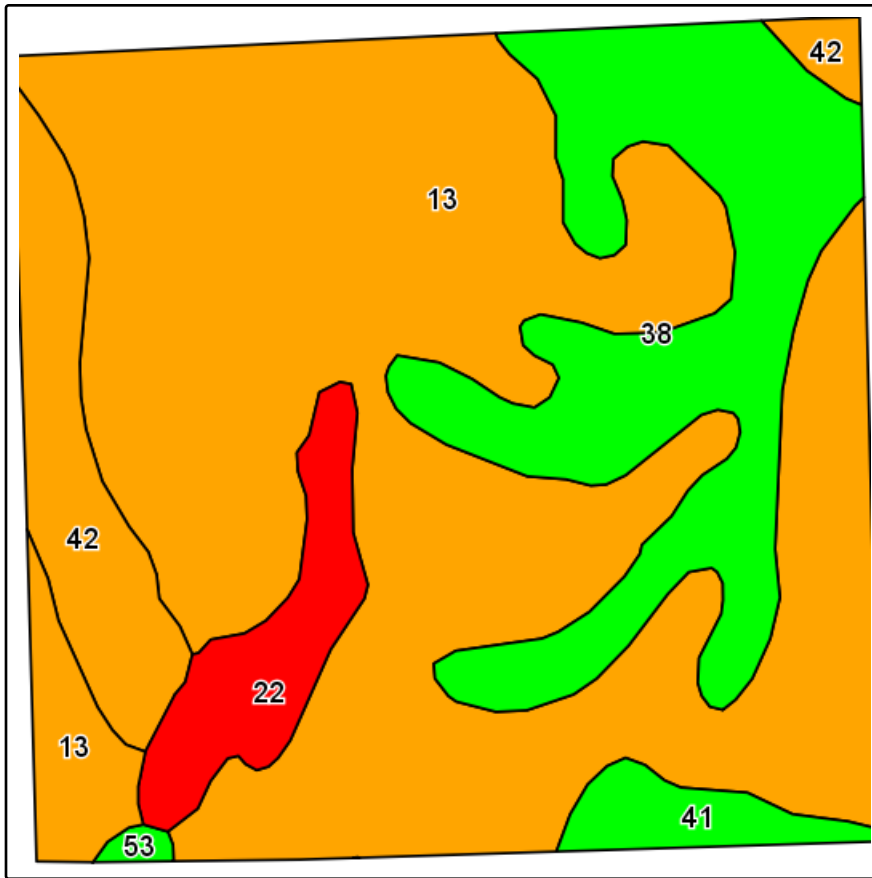
scale: 8847



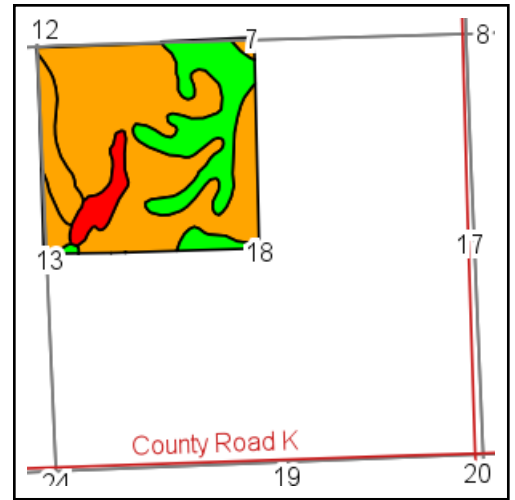
3/4/2013

Field borders provided by Farm Service Agency as of 5/21/2008. Aerial photography provided by Aerial Photography Field Office.

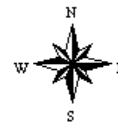
Soils Map



Field borders provided by Farm Service Agency as of 5/21/2008.
Soils data provided by USDA and NRCS.



State: **Colorado**
County: **Cheyenne**
Location: **18-15S-44W**
Township: **Cheyenne Wells**
Acres: **163.1**
Date: **3/4/2013**

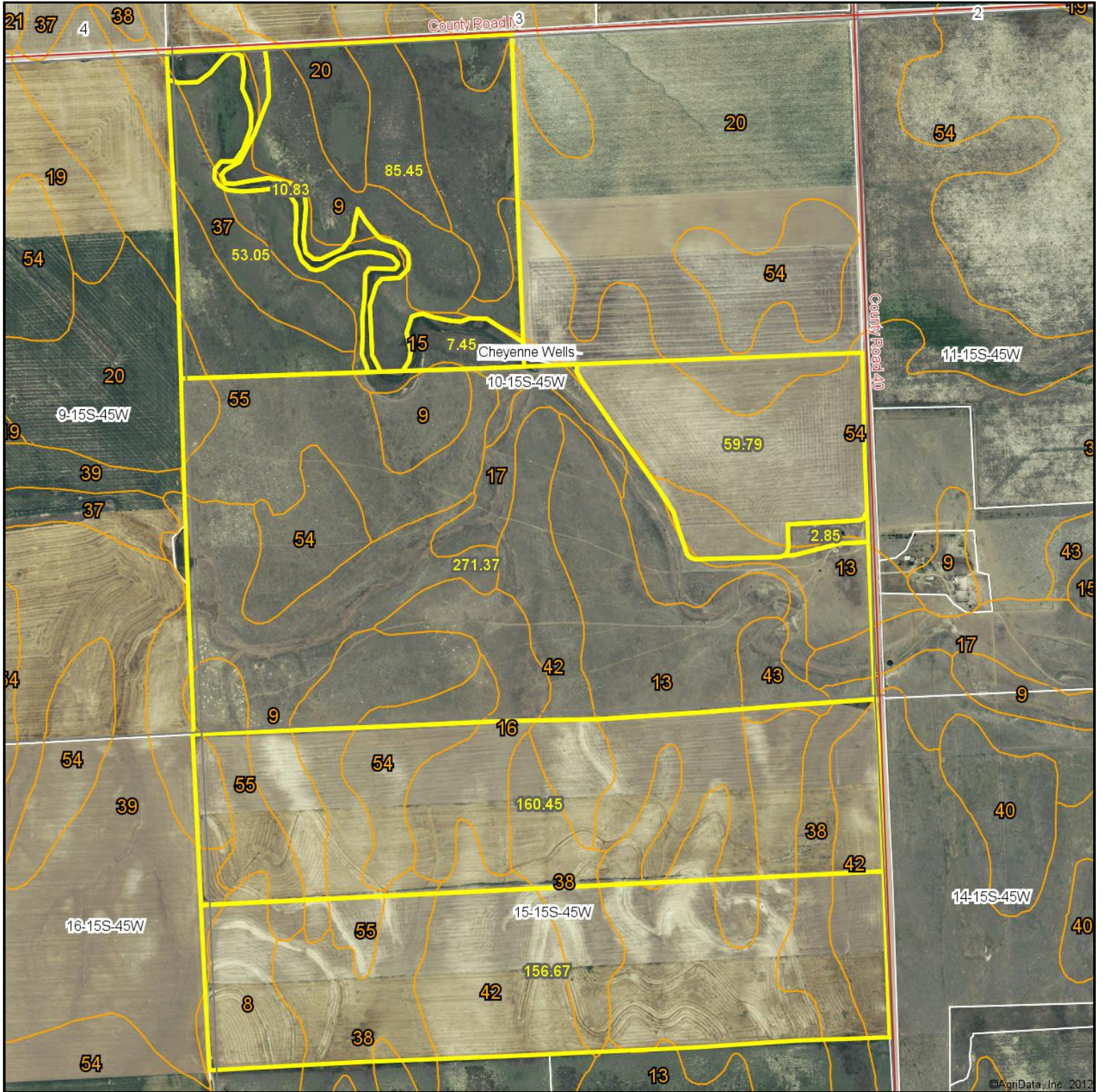


Maps provided by:



Code	Soil Description	Acres	Percent of field	Non-Irr Class Legend	Non-Irr Class	Irr Class	Grain sorghum	Wheat	Winter wheat
13	Fort Collins loam, 0 to 3 percent slopes	105.5	64.7%		IVc	Ile		24	
38	Satanta loam, 0 to 3 percent slopes	32.4	19.9%		IIIe	Ile	25		22
42	Stoneham loam, 3 to 6 percent slopes	12.6	7.7%		IVe	IVe	16	16	
22	Kim loam, 3 to 12 percent slopes	8.3	5.1%		VIe	IVe	15	17	
41	Stoneham loam, 0 to 3 percent slopes	3.8	2.3%		IIIe	Ile	18	18	
53	Weld silt loam, 0 to 1 percent slopes	0.5	0.3%		IIIe	IIIs			
Weighted Average							7.4	18	4.4

Aerial Map



Maps provided by:



©AgriData, Inc. 2012

www.AgriDataInc.com

10-15S-45W
Cheyenne County
Colorado

map center: 38° 45' 26.29, 102° 26' 2.27

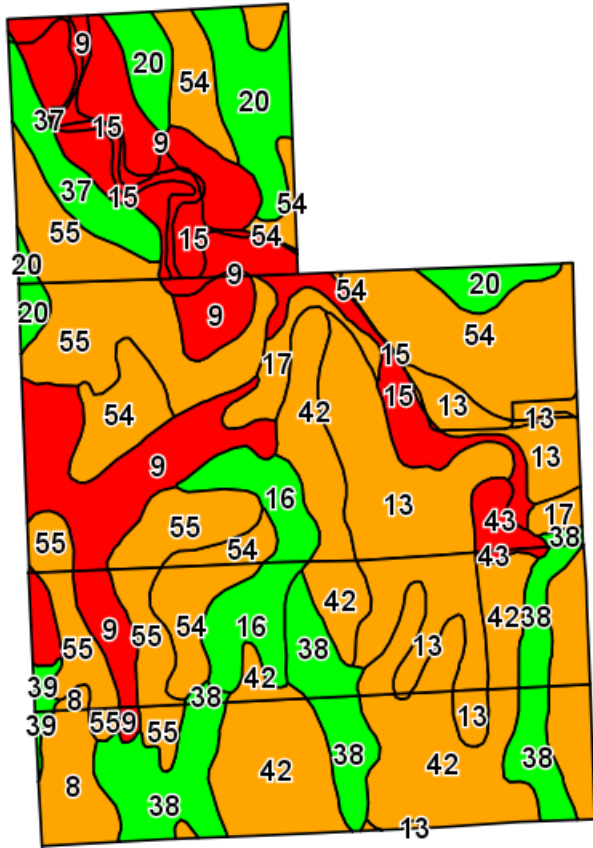
scale: 12816



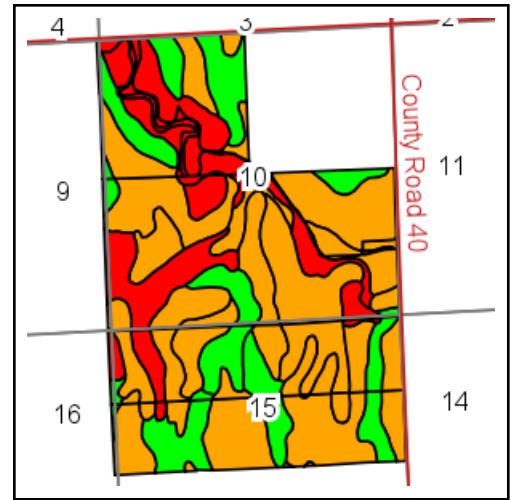
3/4/2013

Field borders provided by Farm Service Agency as of 5/21/2008. Aerial photography provided by Aerial Photography Field Office.

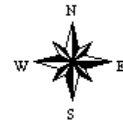
Soils Map



Field borders provided by Farm Service Agency as of 5/21/2008.
Soils data provided by USDA and NRCS.



State: **Colorado**
County: **Cheyenne**
Location: **10-15S-45W**
Township: **Cheyenne Wells**
Acres: **807.9**
Date: **3/4/2013**



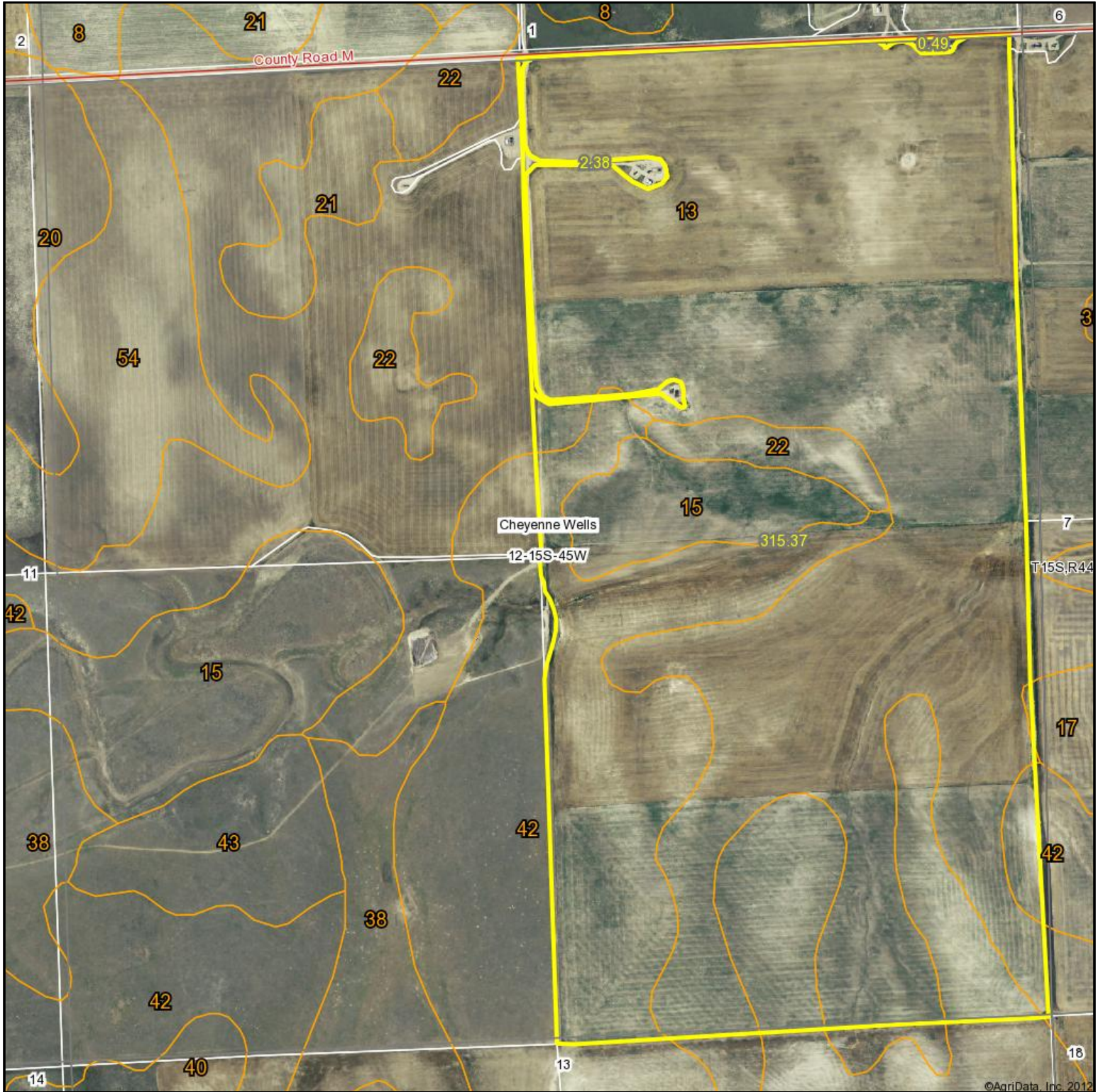
Maps provided by:



©AgriData, Inc 2012
www.AgriDataInc.com

Code	Soil Description	Acres	Percent of field	Non-Irr Class Legend	Non-Irr Class	Irr Class	Grain sorghum	Wheat	Winter wheat
42	Stoneham loam, 3 to 6 percent slopes	146.9	18.2%		IVe	IVe	16	16	
55	Wiley complex, 3 to 5 percent slopes, eroded	105.7	13.1%		IVe	IIIe	17	15	
54	Wiley complex, 0 to 3 percent slopes, eroded	102.8	12.7%		IVe	Ile	18	20	
9	Colby silt loam, 4 to 12 percent slopes	94.3	11.7%		VIe	VIe			
13	Fort Collins loam, 0 to 3 percent slopes	88.7	11.0%		IVc	Ile		24	
38	Satanta loam, 0 to 3 percent slopes	68.2	8.4%		IIIe	Ile	25		22
15	Glenberg-Bankard complex, 0 to 1 percent slopes	61.3	7.6%		Vw	IIw	16	18	
20	Keith-Ulysses silt loams, 1 to 4 percent slopes	46.7	5.8%		IIIe	Ile			
16	Goshen silt loam, 0 to 1 percent slopes	31.6	3.9%		IIIc	I	35		35
8	Colby silt loam, 1 to 4 percent slopes, eroded	18.5	2.3%		IVe	Ile	15		14
37	Sampson loam, 0 to 2 percent slopes	17.6	2.2%		IIIc	Ile	30	25	
17	Haverson loam, 0 to 1 percent slopes	14.7	1.8%		IVw	IIw	19	20	
43	Stoneham-Kim loams, 6 to 12 percent slopes	7.9	1.0%		VIe	Ve			
39	Satanta-Colby complex, 3 to 5 percent slopes	3	0.4%		IIIe	IIIe	25		22
Weighted Average							13.6	12.3	3.6

Aerial Map



©AgriData, Inc. 2012



Maps provided by:



©AgriData, Inc. 2012

www.AgriDataInc.com

12-15S-45W
Cheyenne County
Colorado

map center: 38° 45' 42", 102° 23' 49.81

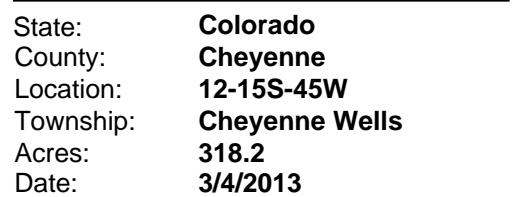
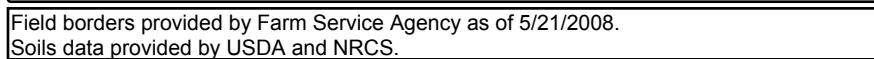
scale: 8856



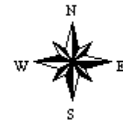
5/17/2013

Field borders provided by Farm Service Agency as of 5/21/2008. Aerial photography provided by Aerial Photography Field Office.

Soils Map



Maps provided by:



©AgriData, Inc 2012
www.AgriDataInc.com

Code	Soil Description	Acres	Percent of field	Non-Irr Class Legend	Non-Irr Class	Irr Class	Grain sorghum	Wheat
13	Fort Collins loam, 0 to 3 percent slopes	214.2	67.3%		IVc	Ile		24
42	Stoneham loam, 3 to 6 percent slopes	81	25.5%		IVe	IVe	16	16
15	Glenberg-Bankard complex, 0 to 1 percent slopes	16	5.0%		Vw	IIw	16	18
22	Kim loam, 3 to 12 percent slopes	6.8	2.1%		VIe	IVe	15	17
17	Haverson loam, 0 to 1 percent slopes	0.2	0.1%		IVw	IIw	19	20
Weighted Average							5.2	21.5