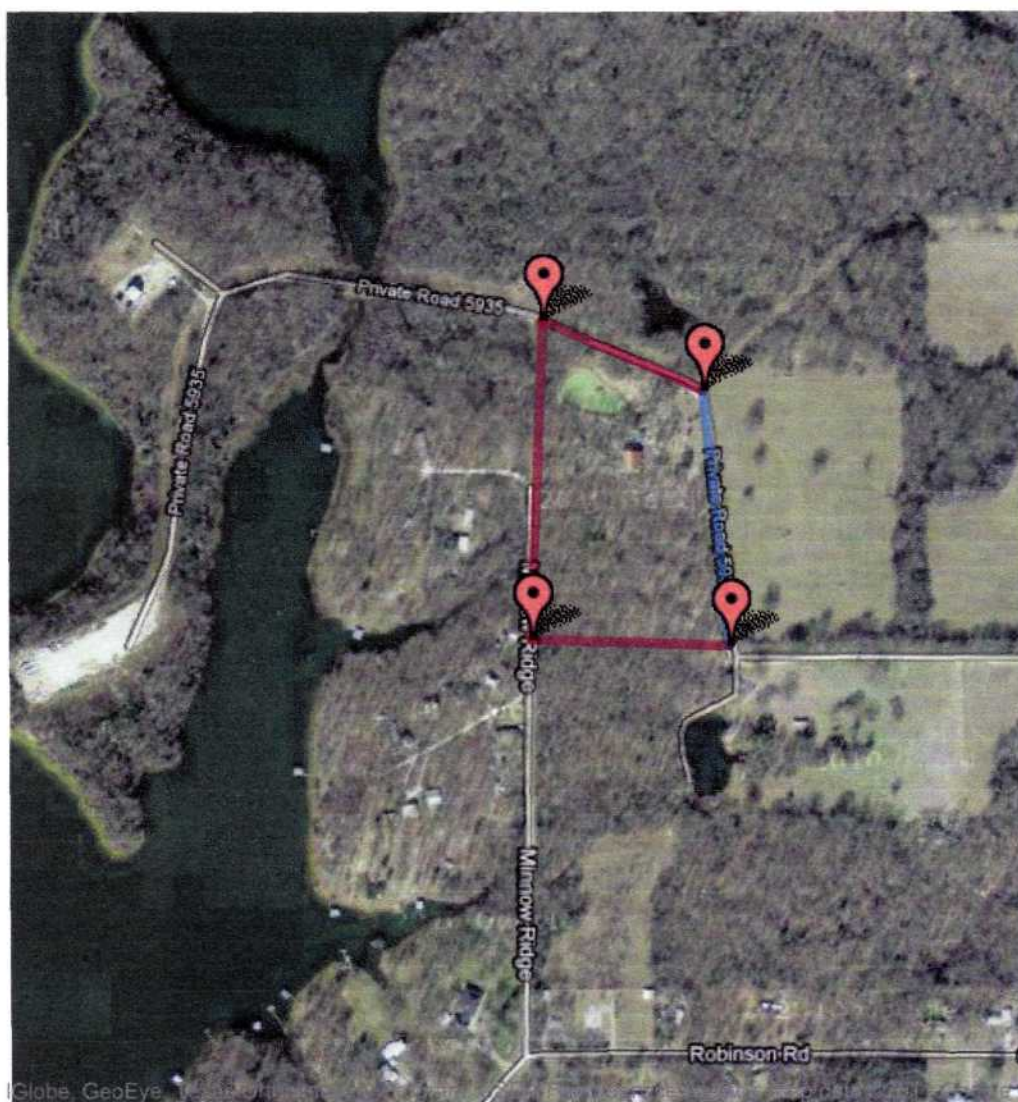


Google Planimeter

Measure areas using Google Maps!



Drag the map with your mouse, or double-click to center.

Click on the map to place points.

The enclosed area is shown below.

Delete Last Point

Clear All Points

[Automated Ads on](#)
[No Customer Review](#)
[Cell Phone Spy Tool](#)

5.139e+4 m² / 5.139 hectares / 0.05139 km² / 5.532e+5 ft² / 12.70 acres / 0.01984 mile²

Notes:

- The page remembers your most recent position/zoom/map-type for the next time you visit.
- If you haven't visited before, it tries to figure out your location based on your internet address.
- The area computation is done using spherical geometry, so it's correct for large regions.
- The lines between points are drawn as great circles, to go along with the spherical area math.
- Lines that cross the International Dateline **do** work, with a small gap in the line. (Google Maps applications tend to have problems with the Dateline.)
- Areas that span more than half the globe may display strangely.
- This used to be called the Google Areometer, because I couldn't remember the name of the doohickey used to measure areas on a map. But the Lazyweb reminded me, so I changed it. [Links](#)