

LAND FOR SALE

“Big Mac” Canyon Pasture



Location:

Northwest of Ogallala, Nebraska 13 miles with access from the south by county gravel road off of US Highway 26.

**Legal
Description:**

All Section 34-T15N-R40W; All except tract in S1/2 Section 3 & All except tracts Section 4-T14N-R40W of the 6th P.M., Keith County, Nebraska.

Acres:

Keith County Assessor shows 1768 taxed accessed acres, a recent survey indicates there are 1790 acres within the fence lines.

Taxes:

2012 taxes payable in 2013 - \$8,296.76

Land Use:

This property is primarily used for livestock grazing with the added benefit for deer hunting. It is fenced into 2 pastures with a set of gathering pens at the south end.

Water:

Stock water is provided by 4 submersible wells and tanks.

Price:

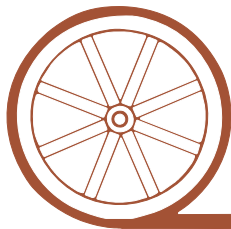
\$1,725,000

Comments:

What an opportunity! The muleys are big on this property. It overlooks the famous Lake McConaughy to the north. If you're looking for that "BIG BUCK" spot, here it is.

Contact:

Mike Polk; Listing Agent - 308-539-4446 or mike@agriaffiliates.com
Roger Luehrs; Listing Agent - 308-631-2506 or roger@agriaffiliates.com
Loren Johnson, Bruce Dodson, Tony Eggleston, Jerry Weaver, Chase Dodson, Greg Polk



Offered Exclusively By:

AGRI AFFILIATES, INC.

...Providing Farm - Ranch Real Estate Services...

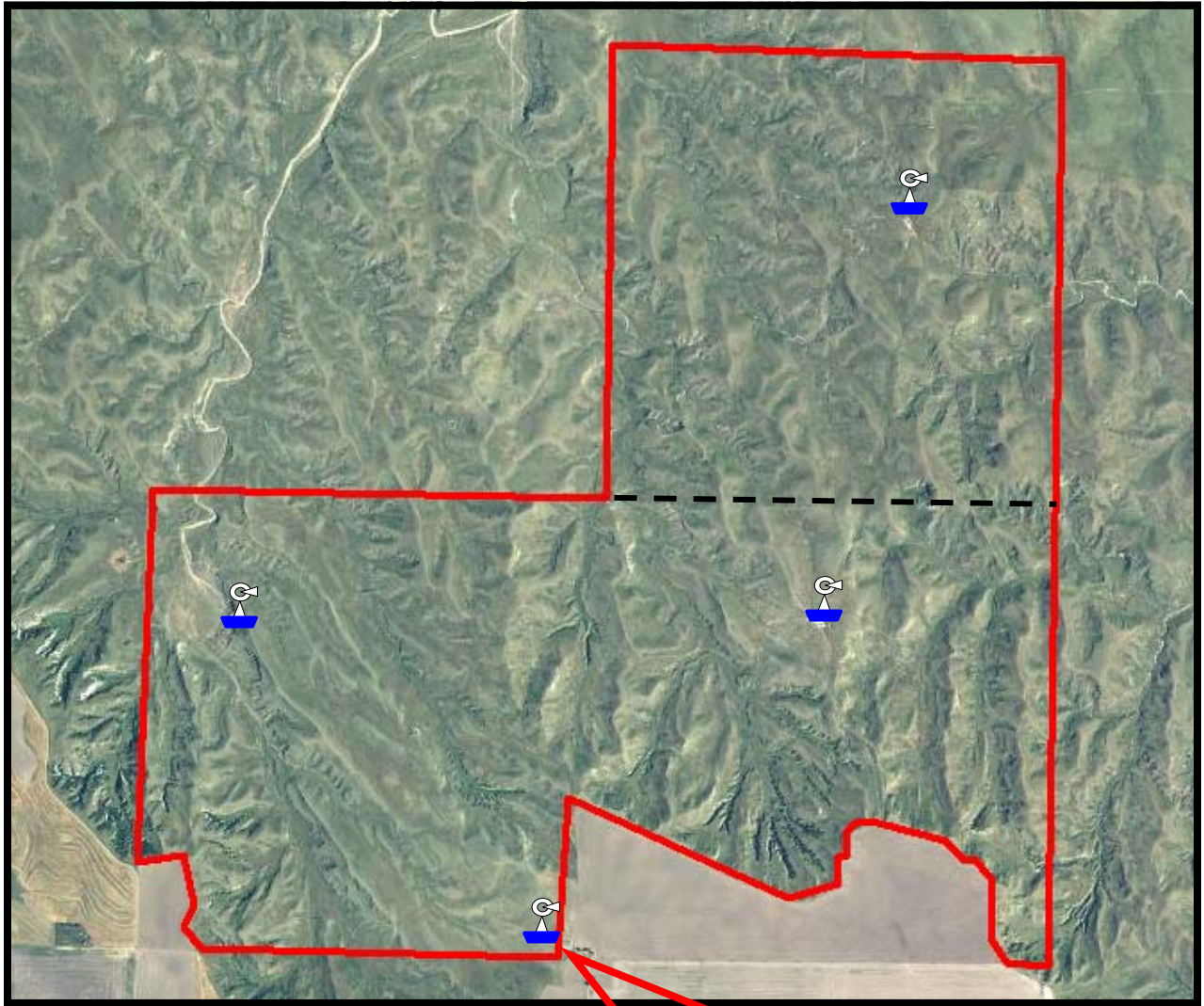
NORTH PLATTE OFFICE

P.O. Box 1166
I-80 & US Hwy 83
North Platte, NE 69103
www.agriaffiliates.com

(308) 534-9240

Telecopier (308) 534-9244

Information contained herein was obtained from sources deemed reliable. We have no reason to doubt the accuracy, but we do not guarantee it. Prospective Buyers should verify all information, including items of income and expense. All maps provided by Agri Affiliates, Inc. are approximations only, to be used as a general guideline, and not intended as survey accurate.



All maps provided by Agri Affiliates, Inc. are approximations only, to be used as a general guideline, and not intended as survey accurate.



Gathering pens location.



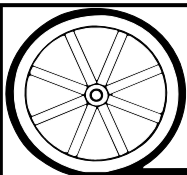
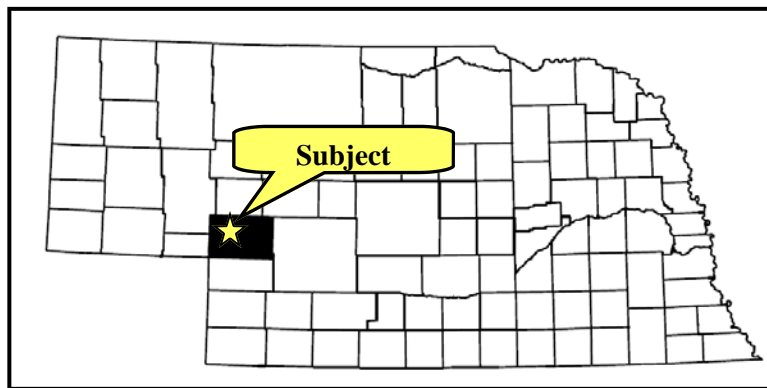
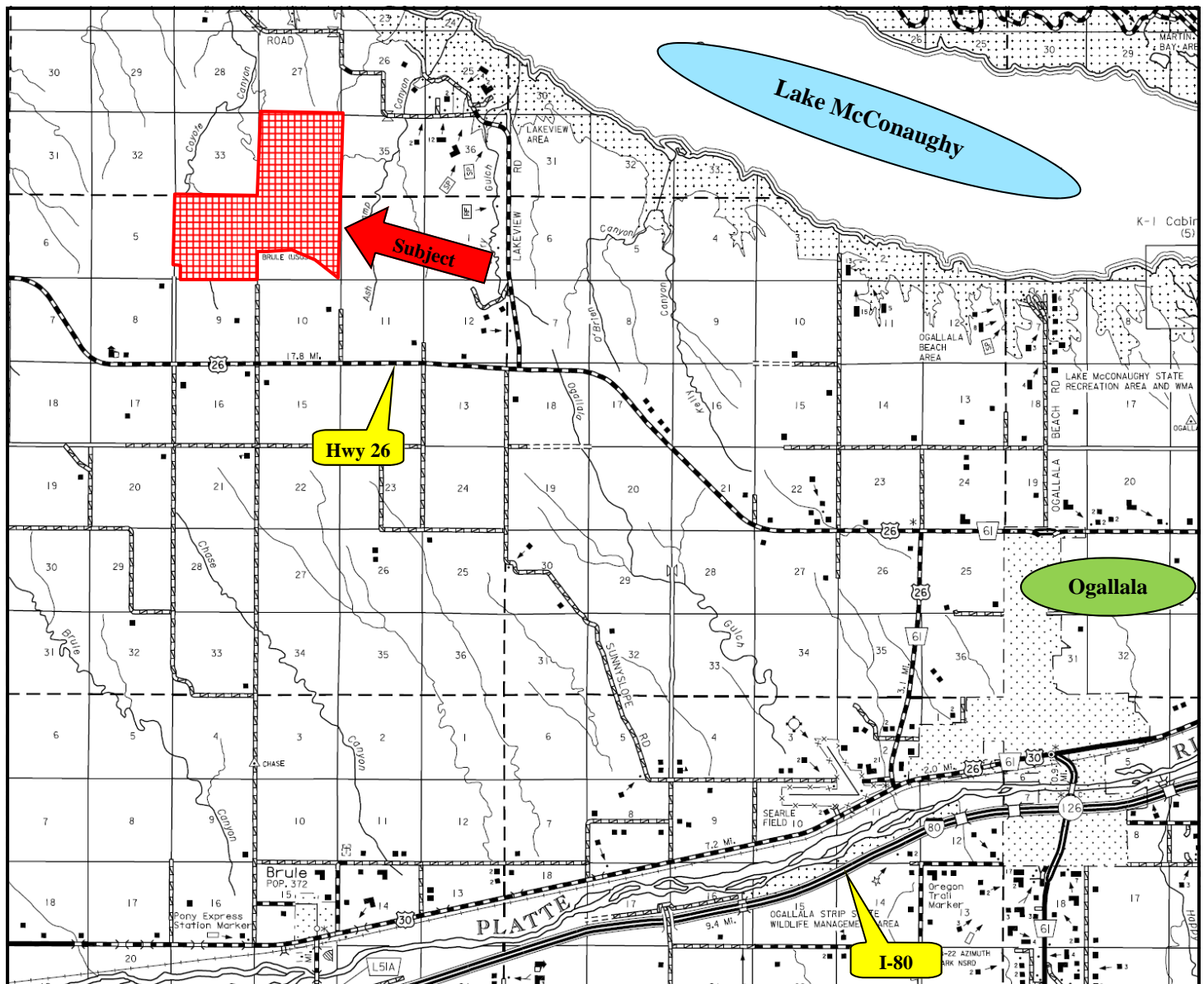


Future harvests!

Product of 2012 harvest!



**Don't let this
opportunity
get away!**



AGRI AFFILIATES, INC.

...Providing Farm - Ranch Real Estate Services...

All maps provided by Agri Affiliates, Inc. are approximations only, to be used as a general guideline, and not intended as survey accurate.