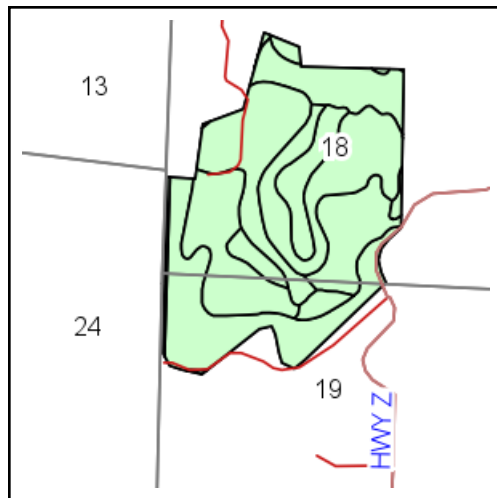
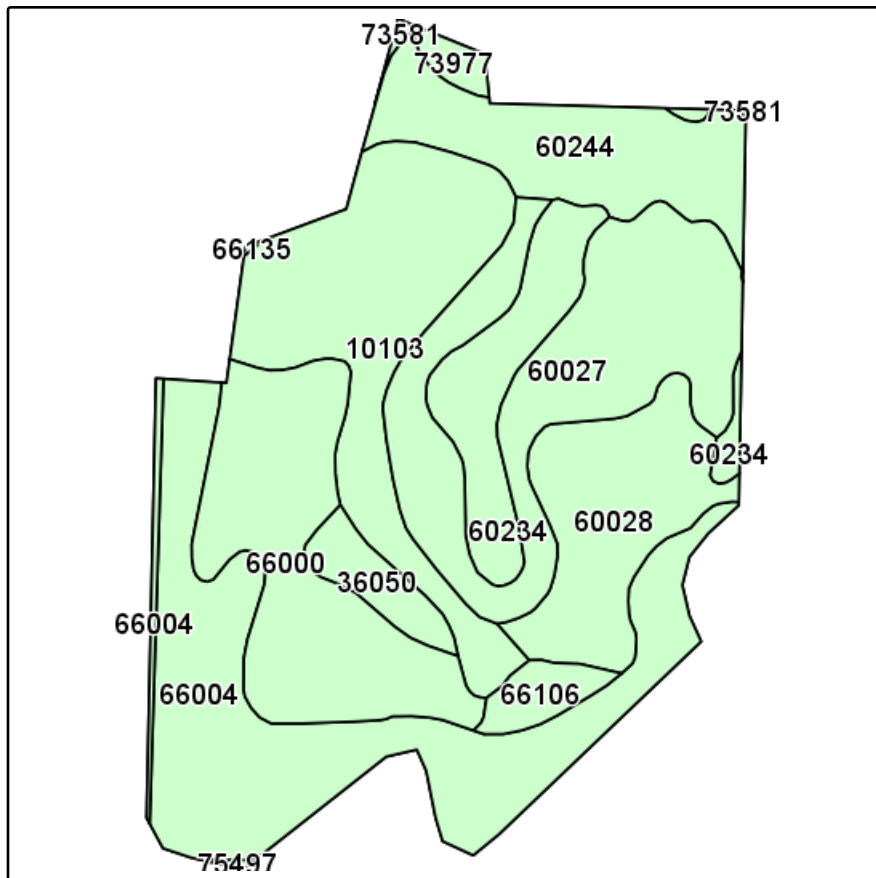
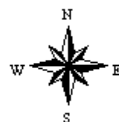


Soils Map



State: **Missouri**
 County: **Cooper**
 Location: **18-48N-19W**
 Township: **Blackwater**
 Acres: **217.8**
 Date: **2/6/2013**

Field borders provided by Farm Service Agency as of 5/21/2008.
 Soils data provided by USDA and NRCS.



Maps provided by:



©AgriData, Inc 2012
 www.AgriDataInc.com

Code	Soil Description	Acres	Percent of field	Non-Irr Class	Common bermudagrass	Warm season grasses	Alfalfa hay	Orchardgrass red clover	Soybeans	Corn	Caucasian bluestem	Winter wheat	Tall fescue	Grain sorghum
66004	Dockery silt loam, 0 to 2 percent slopes, frequently flooded	45.7	20.9%	IIIw		8	10		9	28	5		37	8
60027	Weller silt loam, 2 to 5 percent slopes, eroded	37.8	17.3%	Ile		7	8	5	8			8		7
10103	McGirk silt loam, 2 to 5 percent slopes	34.5	15.9%	Ile		8	10		7			2		8
66000	Moniteau silt loam, 0 to 2 percent slopes, occasionally flooded	30.6	14.1%	IIIw		8	10		7					8
60028	Weller silt loam, 5 to 9 percent slopes, eroded	21.2	9.7%	IIIe		7	8	5	8			8		7
60244	Winfield silt loam, 5 to 9 percent slopes, eroded	21	9.7%	IIIe		7	8	7	7			8		7
60234	Weller silt loam, 2 to 5 percent slopes	14.8	6.8%	Ile		7	8	5	8			8		7
36050	Zook silty clay loam, 0 to 2 percent slopes, occasionally flooded	4.8	2.2%	IIw		8	9		7					8

66106	Speed silt loam, 0 to 2 percent slopes, occasionally flooded	3.6	1.7%	IIw	8	10		9					8	
73977	Wrengart silt loam, 8 to 15 percent slopes, eroded	1.7	0.8%	IVe	4	6	3	5			6		5	
66004	Dockery silt loam, 0 to 2 percent slopes, frequently flooded	1.4	0.7%	IIIw	8	10		9	28	5		37	8	
73581	Wrengart silt loam, 15 to 25 percent slopes	0.3	0.1%	Vle	4	6	3	5			6		5	
60030	Winfield silt loam, 5 to 9 percent slopes	0.2	0.1%	IIIe	7	8	7	7			8		7	
75497	Tanglenook silt loam, 0 to 2 percent slopes, occasionally flooded	0.2	0.1%	IIIw	8	9		7					8	
Weighted Average					7.5	9.1	2.4	7.8	6	1.1	3.9	8	7.5	