

# SURVEY PLAT

6.37 ACRES - WILLIAM D. LEE SUR. NO. 74, ABST. NO. 231

BANDERA COUNTY, TEXAS

TABLE OF TANGENTS		
Id	Bearing	Distance
L1	S 18°46'33" W	163.59'
L2	S 3°50'32" W	257.78'
L3	N 0°07'17" W	17.46'
L4	S 74°39'36" E	17.78'

Vol. 858  
Pg. 204

PINE TREE ROAD

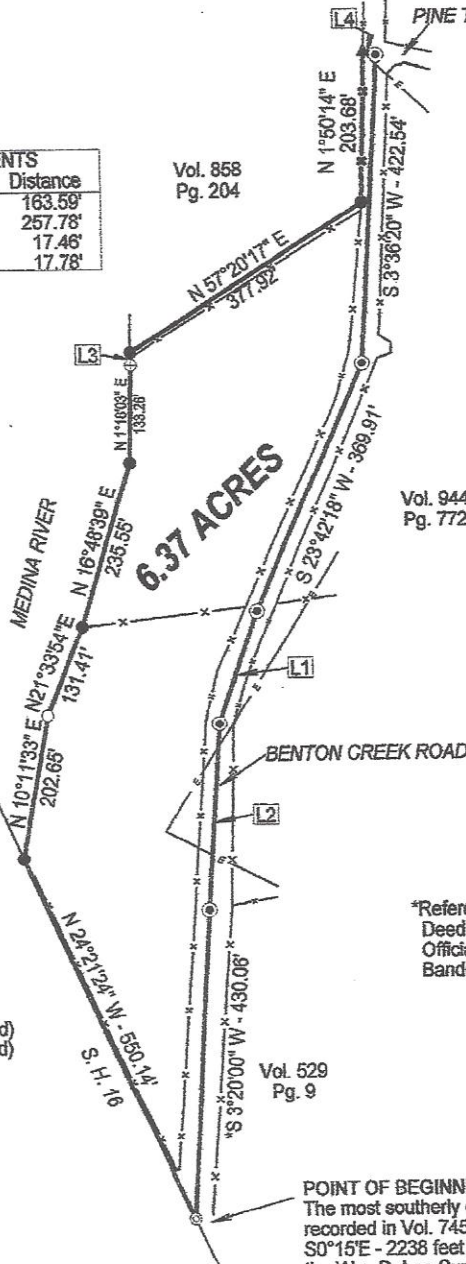


Scale 1" = 200'

Vol. 944  
Pg. 772  
December 19, 2012

## LEGEND

- Iron rod (fnd)
- ⊙ Nail in pavement (fnd)
- ⊙ Nail in Cypress tree (fnd)
- ▲ Wooden fence post (fnd)
- Iron rod (set)
- ⊙ Nail in pavement (set)
- Power line
- x- Wire fence



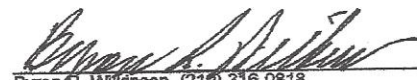
\*Reference Bearing  
Deed, Vol. 745, Pg. 331  
Official Public Records  
Bandera County, Texas

Vol. 529  
Pg. 9

## POINT OF BEGINNING

The most southerly corner of a 12.061 acre tract recorded in Vol. 745, Pg. 331, OPRBC, and approx. S0°15'E - 2238 feet from the upper river corner of the Wm. D. Lee Sur. No. 74, Abs. No. 231

I hereby certify that this survey was made on the ground and that this plat correctly represents the facts found at the time of the survey, and that to the best of my knowledge there are no visible overlapping of improvements, visible easements of rights of way, boundary line conflicts, or encroachments except as shown hereon.

  
Byron R. Wilkinson (210) 316-0818  
Registered Professional Land Surveyor No. 1537  
P. O. Box 398  
Bandera, Texas 78003

