



GREAT SOUTHERN *Land*



67-001 BOONE CREEK EAST (RMK 8026)

\$304,825 (\$1,278.47/acre)

Winston County

241+/- total acres

Great Neighborhood

Boone Creek runs through tract

4 miles north of Addison west of CR 41

60 acres natural timber



For A List Of All The RMK Timberland Group Tracts
Offered By Great Southern Land Visit:

www.GreatSouthernLand.com

GREAT SOUTHERN LAND, LLC

4027 U.S. Highway 231

Wetumpka, AL 36093

(800) 782-LAND (5263) - (334) 567-0924 Office—(334) 567-8024 Fax

Eddie Stone, RF, Listing Agent

205-702-4420 office

205-837-4466 cell

edstone@windstream.net

Fletcher Majors, ALC, Broker

334-567-0924 ext. 205

334-328-9278 cell

Fletcher@GreatSouthernLand.com



Great
Southern
Land



67-001
Boone Creek East
241 +/- Acres

Great hunting and timberland investment tract just north of Addison in Winston County. It consists of pre-merchantable pine planted in 2008 and 2002 and natural timber along the streamside management zones which make an excellent wildlife corridor.

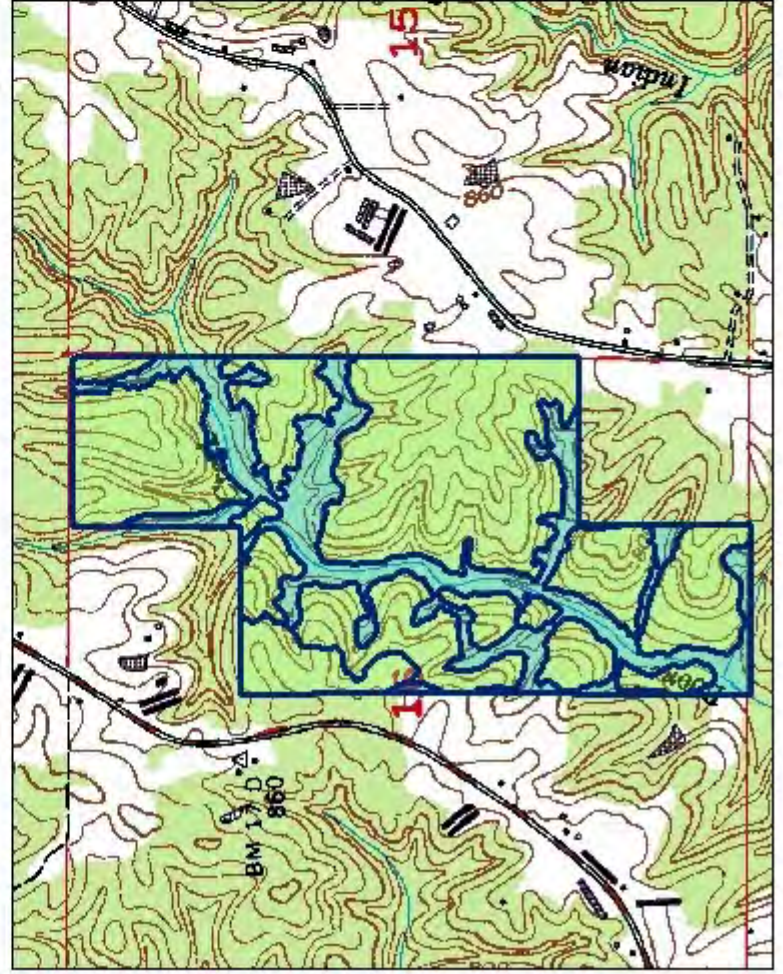
67-001

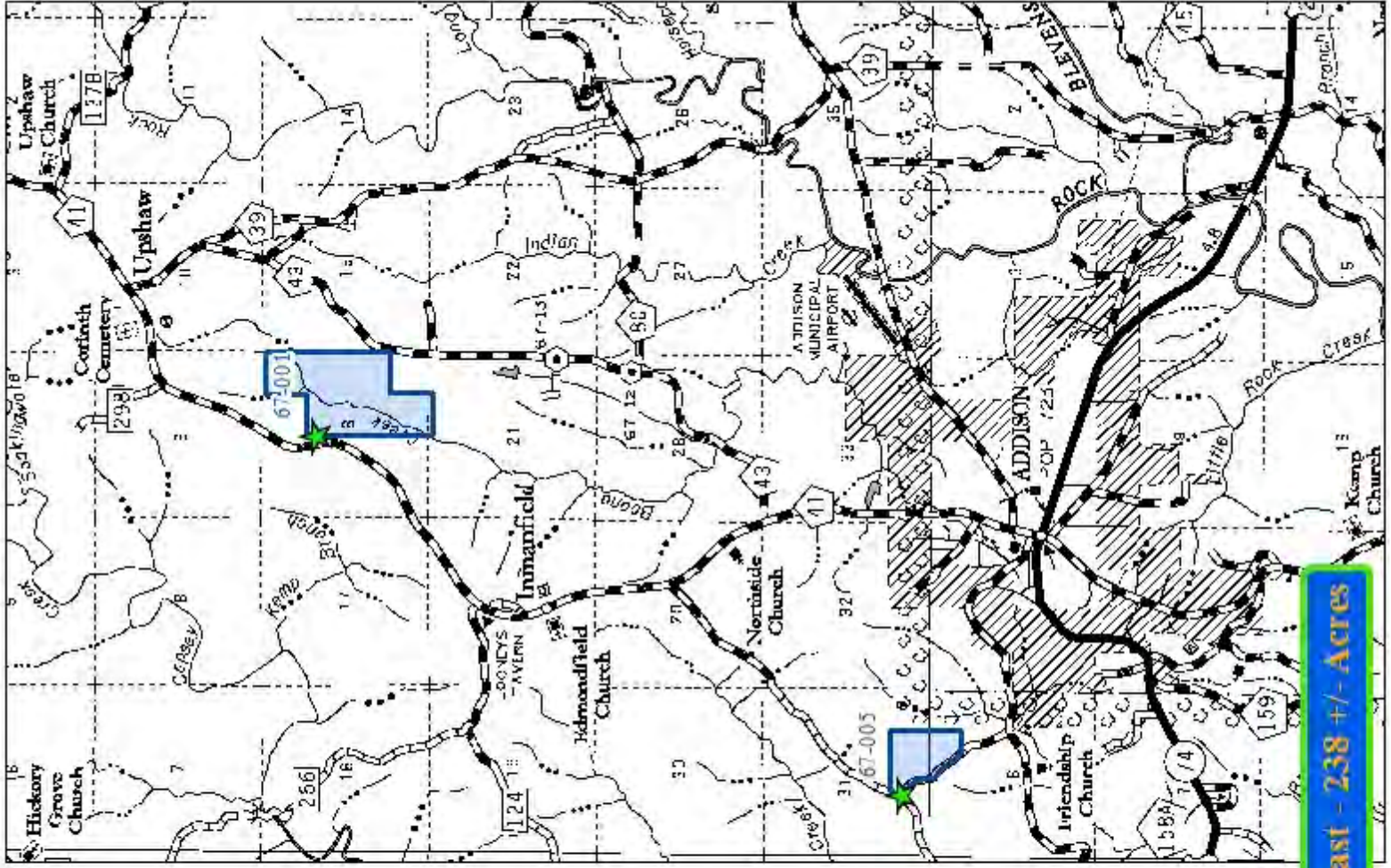
Bing Hybrid Aerial

bing™

0 330 660 1,320 1,980 2,640 Feet

© 2010 Microsoft Corporation © 2010 NAVTEQ ©





67-001 Boone Creek East - 238 +/- Acres

© 2010 NAI
Corporation

