



# GREAT SOUTHERN *Land*



## 67-008 WARD BRIDGE 40 (RMK 7954)

Offered for \$57,200 (\$1,394.78/acre)

Winston County

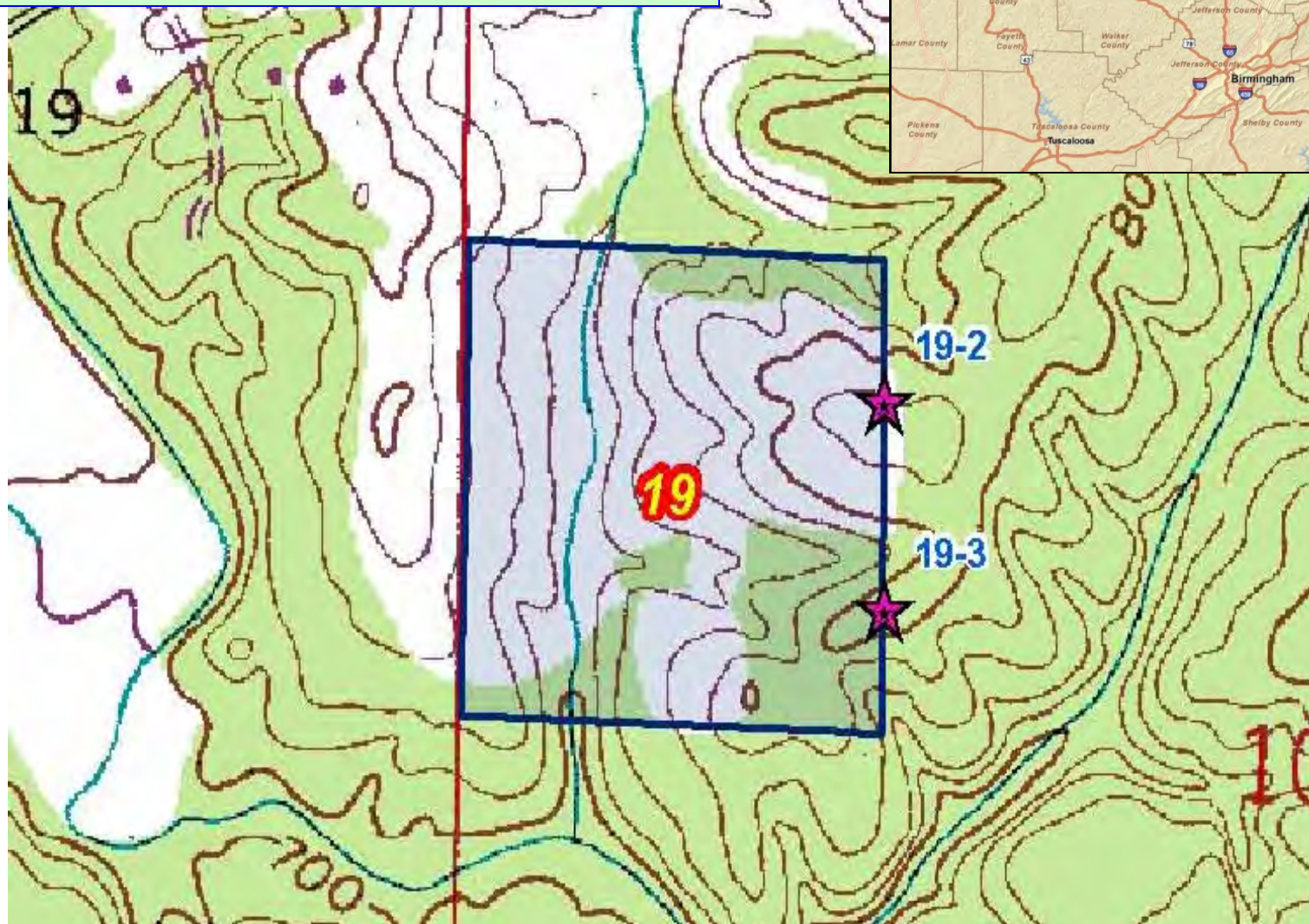
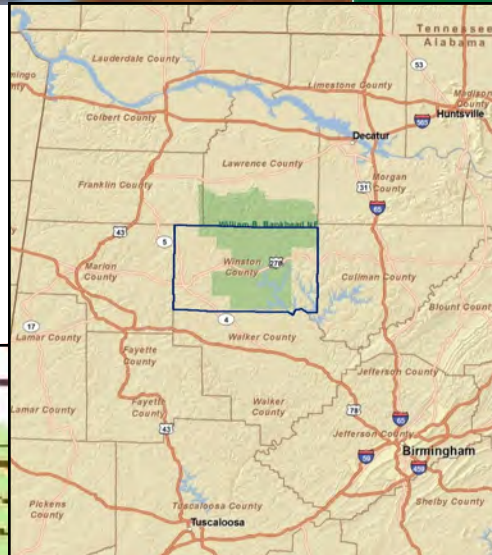
41+/- total acres

Hunting and timberland investment near Haleyville

Located south of CR 30 (Wards Bridge Road)

7 acres of natural timber along creek

Planted pine: 34 acres 2006



Great  
Southern  
Land

For A List Of All The RMK Timberland Group Tracts  
Offered By Great Southern Land Visit:

[www.GreatSouthernLand.com](http://www.GreatSouthernLand.com)

**GREAT SOUTHERN LAND, LLC**

4027 U.S. Highway 231

Wetumpka, AL 36093

(800) 782-LAND (5263) - (334) 567-0924 Office—(334) 567-8024 Fax

**Eddie Stone, RF, Listing Agent**

205-702-4420 office

205-837-4466 cell

[edstone@windstream.net](mailto:edstone@windstream.net)

**Fletcher Majors, ALC, Broker**

334-567-0924 ext. 205

334-328-9278 cell

[Fletcher@GreatSouthernLand.com](mailto:Fletcher@GreatSouthernLand.com)

[www.  
GreatSouthernland  
.com](http://www.GreatSouthernland.com)





CR-30

CR-30

**67-008**

**Ward Bridge**

**41 +/- Acres**

**Bing Hybrid Aerial**

67-008

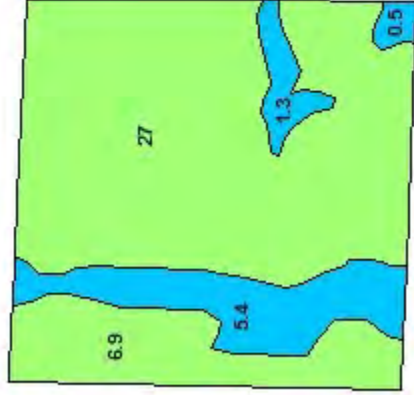
Looking for land in Winston County? This 40 acres features genetically improved loblolly pine planted in 2006 plus natural timber along the streamside management zone. This will provide for a good investment plus a nice place to hunt and enjoy the outdoors.



# 67-008 Ward Bridge 40 - 41 +/- Acres



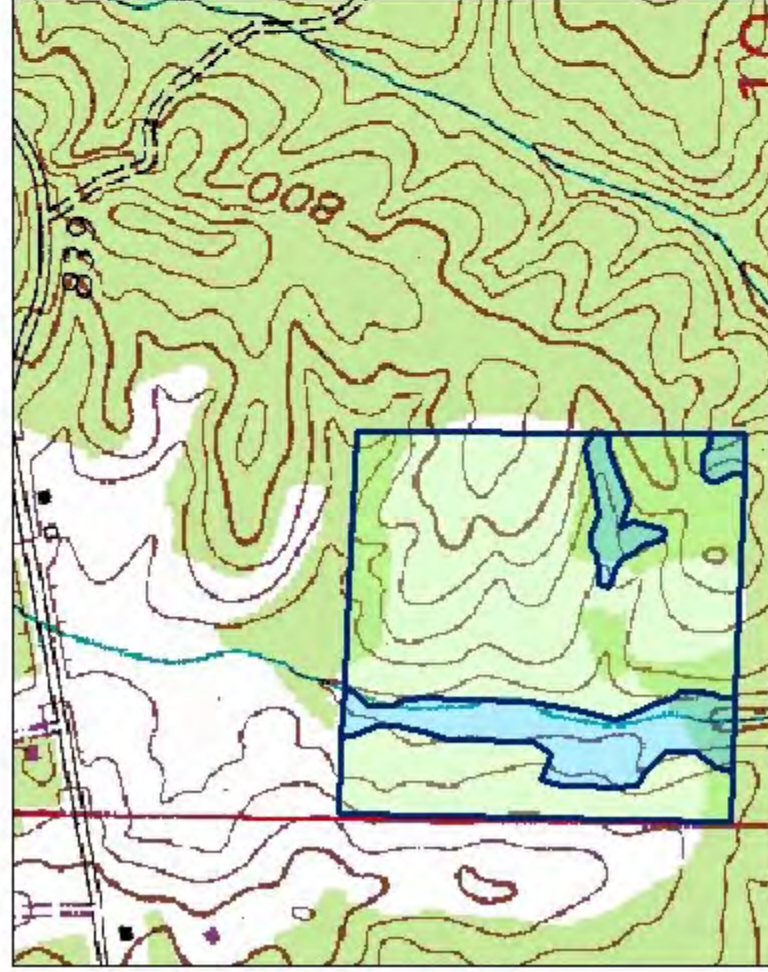
## Stand Use With Acres



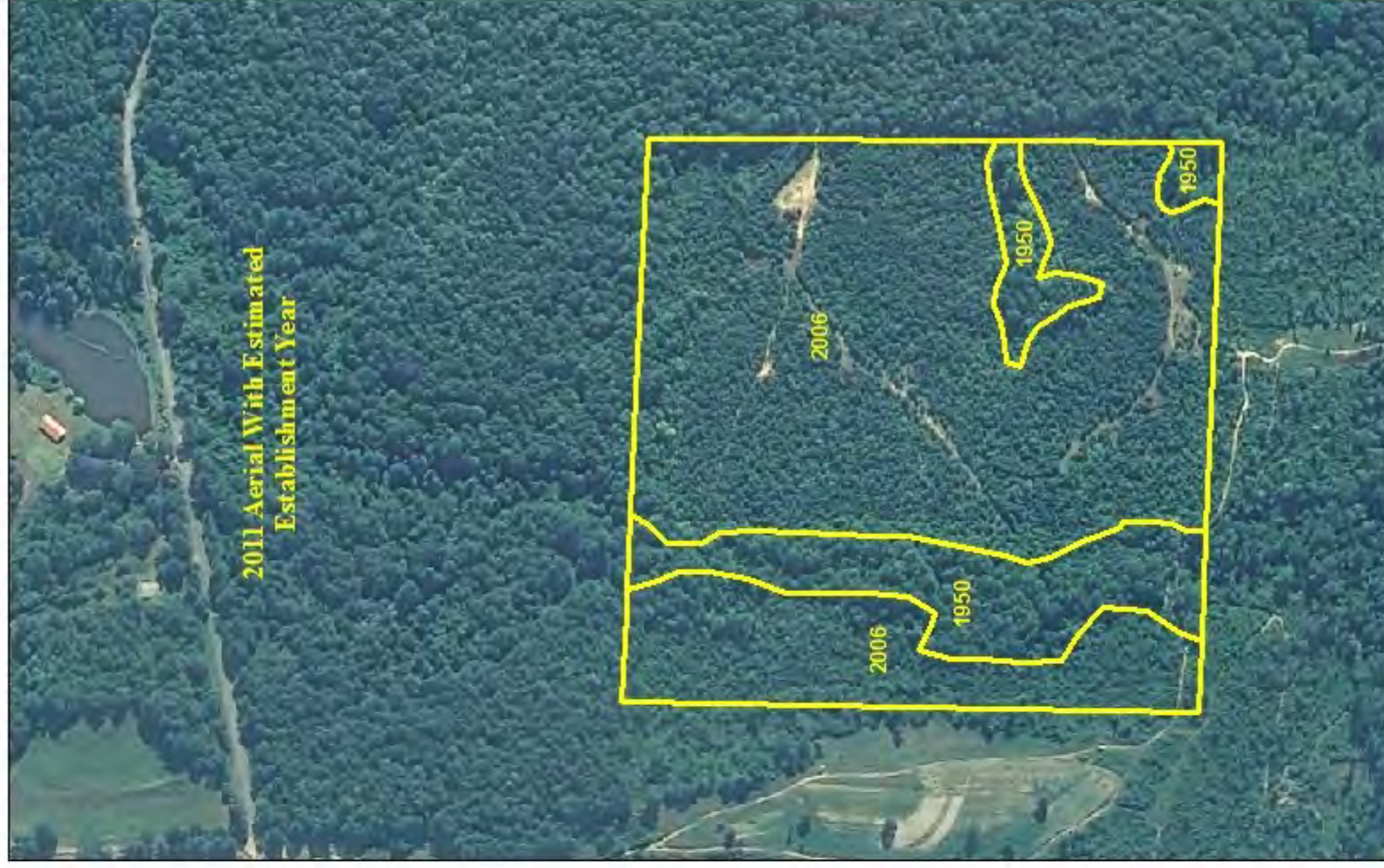
## Legend

### 2012 Stands

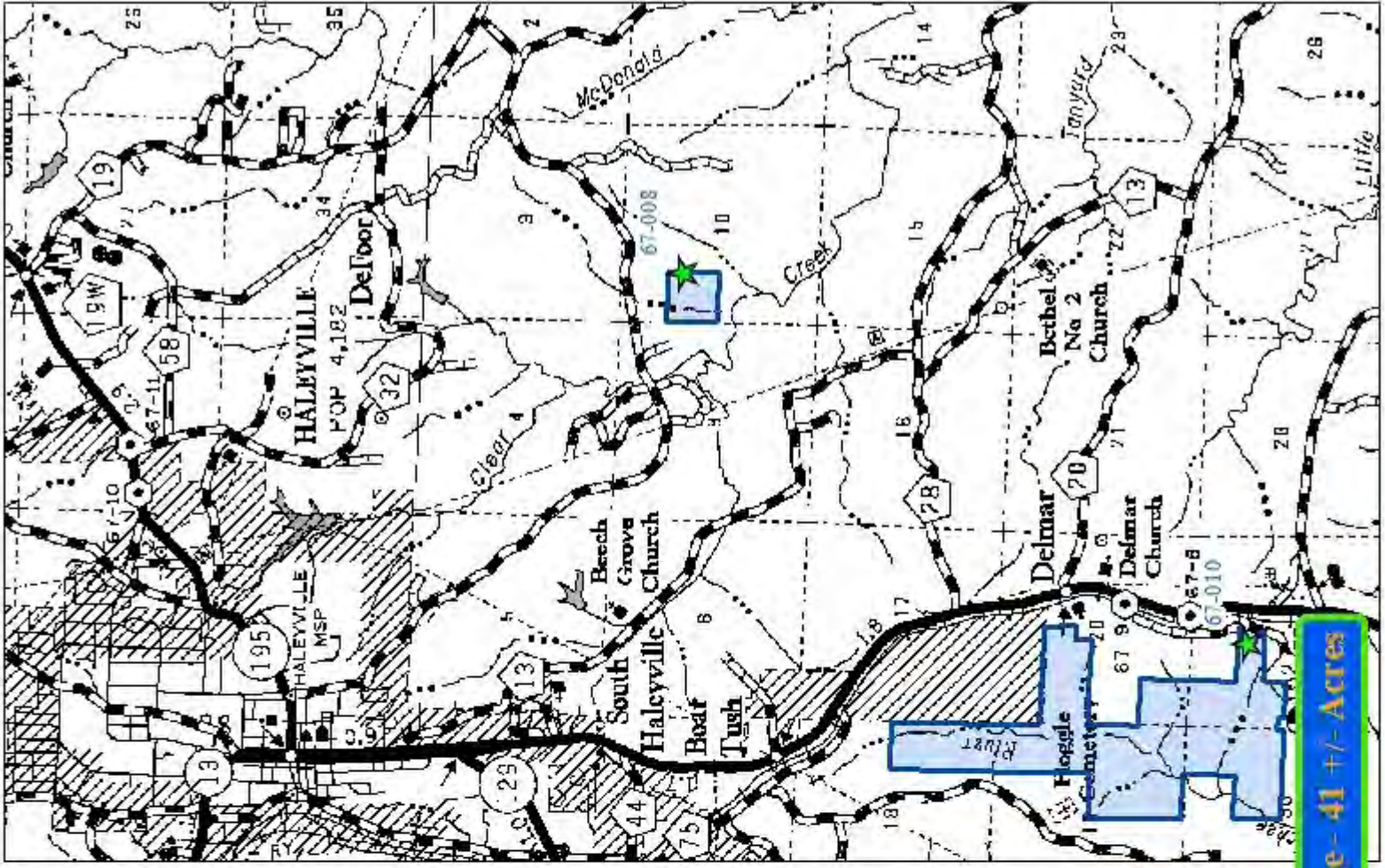
Type	
Natural Bottomland	Green
Natural Sloping	Pink
Natural Upland	Blue
Non Timbered	Grey
Planted Upland	Light Green



## 2011 Aerial With Estimated Establishment Year







**67-008 Ward Bridge - 41 +/- Acres**



© 2010 NAVTEQ  
Corporation

