



# GREAT SOUTHERN *Land*



## 33-001 NIX (RMK 7870)

Offered for \$155,825 (\$1,046.09/acre)  
Franklin County  
149+/- total acres

Great timberland investment at this price. Where else can you find a tract planted with good pines that are ready to grow for under \$1,050 per acre? Add game plots and hunt this tract while you watch your timber grow.



Great  
Southern  
Land

For A List Of All The RMK Timberland Group Tracts  
Offered By Great Southern Land Visit:

[www.GreatSouthernLand.com](http://www.GreatSouthernLand.com)

**GREAT SOUTHERN LAND, LLC**

4027 U.S. Highway 231

Wetumpka, AL 36093

(800) 782-LAND (5263) - (334) 567-0924 Office—(334) 567-8024 Fax

**Eddie Stone, RF, Listing Agent**

205-702-4420 office

205-837-4466 cell

[edstone@windstream.net](mailto:edstone@windstream.net)

**Fletcher Majors, ALC, Broker**

334-567-0924 ext. 205

334-328-9278 cell

[Fletcher@GreatSouthernLand.com](mailto:Fletcher@GreatSouthernLand.com)





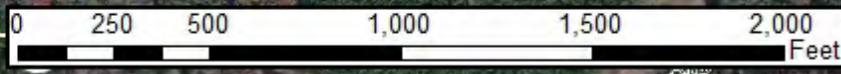


**33-001**  
**Nix**  
**149 +/- Acres**  
**Bing Hybrid Aerial**



33-001

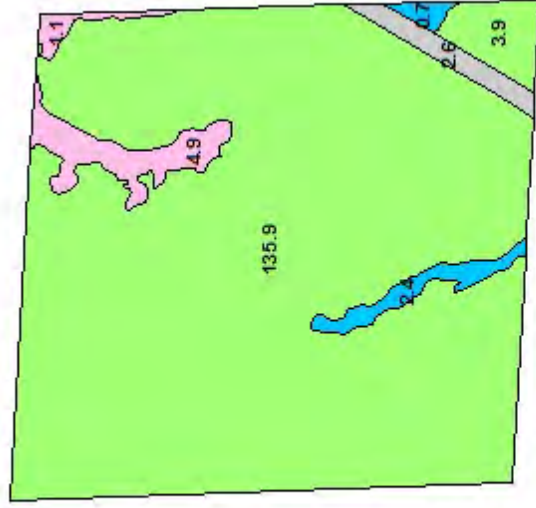
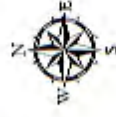
bird



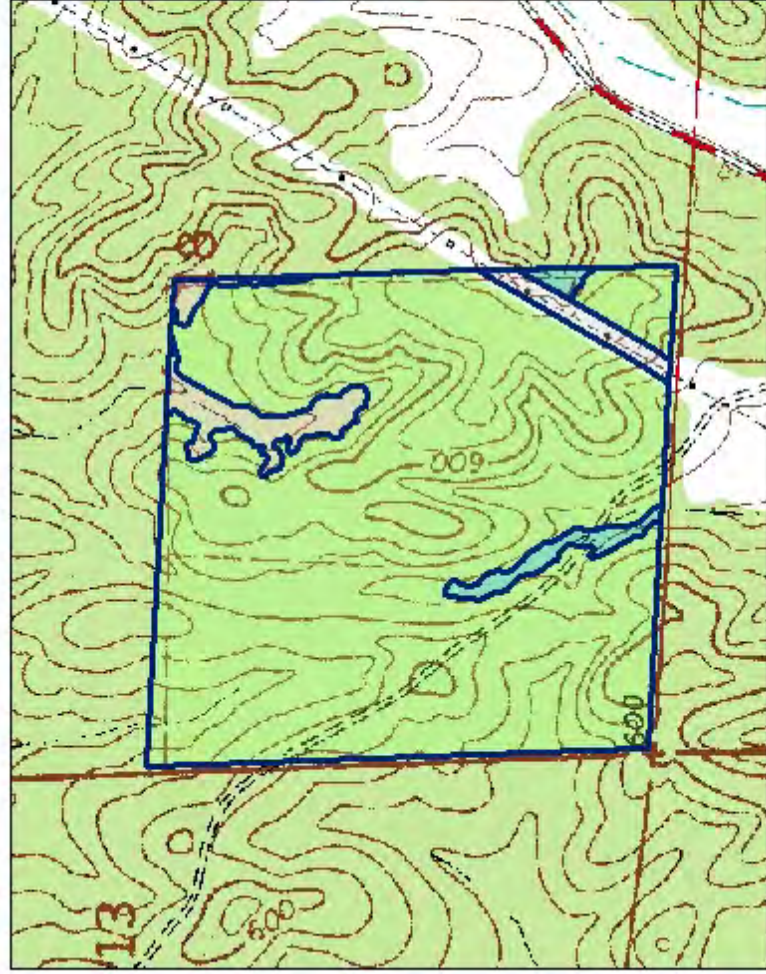
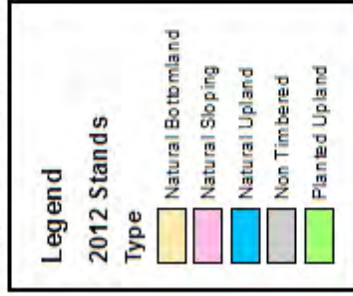
USGS © 2012 Microsoft Corporation © 2010 NAVTEC ©



# 33-001 Nix - 149 +/- Acres



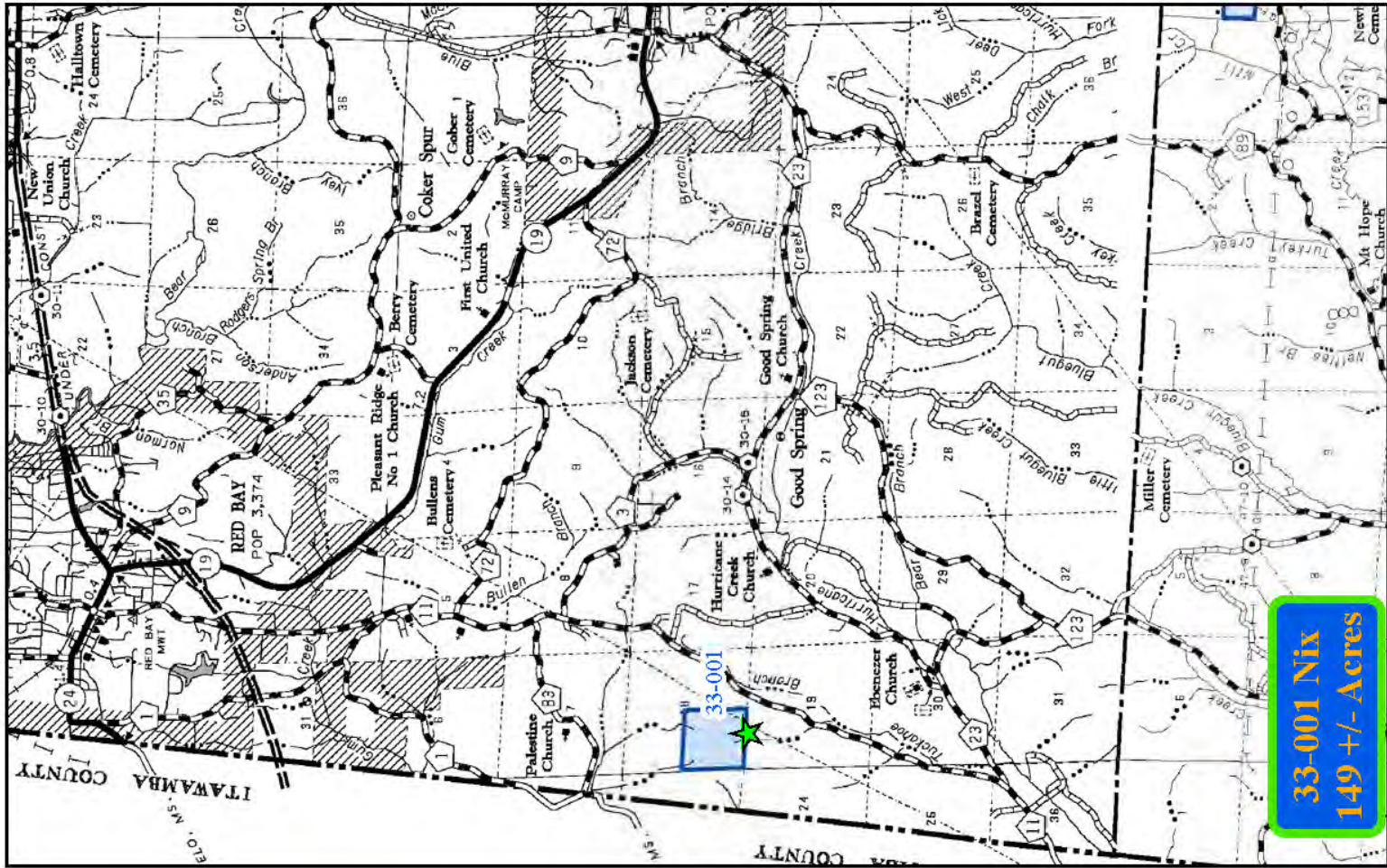
## Stand Use With Acres



# 2011 Aerial With Estimated Establishment Year







**33-001 Nix**  
**149 +/- Acres**

