



# GREAT SOUTHERN *Land*



## 67-005 SPILLER HILL (RMK 8032)

\$103,200 (\$1,316.49/acre)

Winston County

78+/- total acres

Joins USFS Bankhead National Forest

1/2 mile northwest of Addison

Frontage on CR 99 & CR 3728

34 acres natural timber

Planted pine: 2 acres 1987, 20 acres 1994,  
& 22 acres 2008



Great  
Southern  
Land

**For A List Of All The RMK Timberland Group Tracts  
Offered By Great Southern Land Visit:**

[www.GreatSouthernLand.com](http://www.GreatSouthernLand.com)

***GREAT SOUTHERN LAND, LLC***

4027 U.S. Highway 231

Wetumpka, AL 36093

(800) 782-LAND (5263) - (334) 567-0924 Office—(334) 567-8024 Fax

**Eddie Stone, RF, Listing Agent**

205-702-4420 office

205-837-4466 cell

[edstone@windstream.net](mailto:edstone@windstream.net)

**Fletcher Majors, ALC, Broker**

334-567-0924 ext. 205

334-328-9278 cell

[Fletcher@GreatSouthernLand.com](mailto:Fletcher@GreatSouthernLand.com)







CR-99

67-005

CR-3728

William B Bankhead National Forest

If you are looking for land in Winston County, this 78 acres is located north-west of Addison and it joins the National Forest. It is located along County Road 3728 and NF-124. It features pre-merchantable pine and natural timber which allows for a good timber investment along with a place to hunt and enjoy the great outdoors.

67-005  
Spiller Hill  
78 +/- Acres

**Bing Hybrid Aerial**

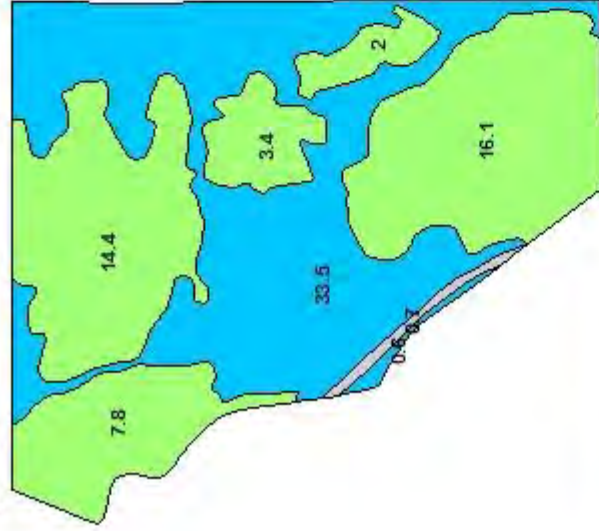
bir

0 250 500 1,000 1,500 2,000 Feet

10 NAWTEO ©



# 67-005 Spiller Hill - 78 +/- Acres



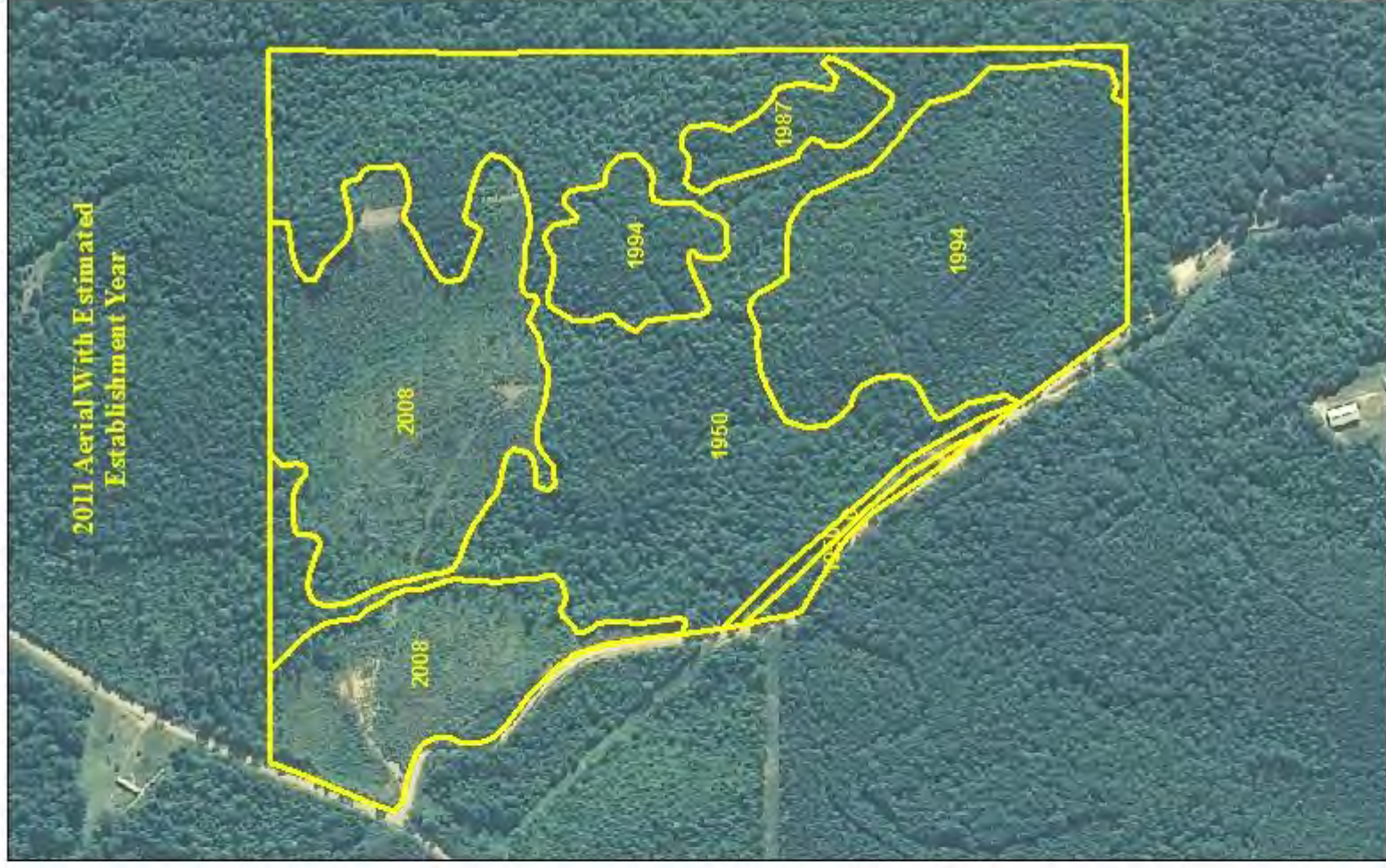
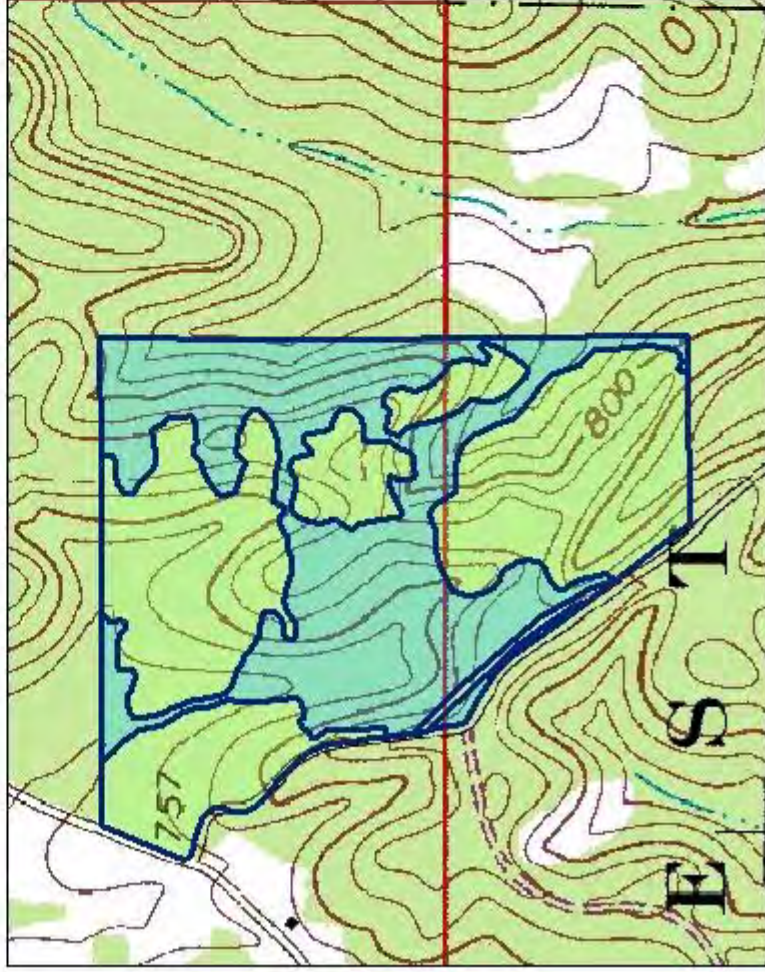
Stand Use With Acres

## Legend

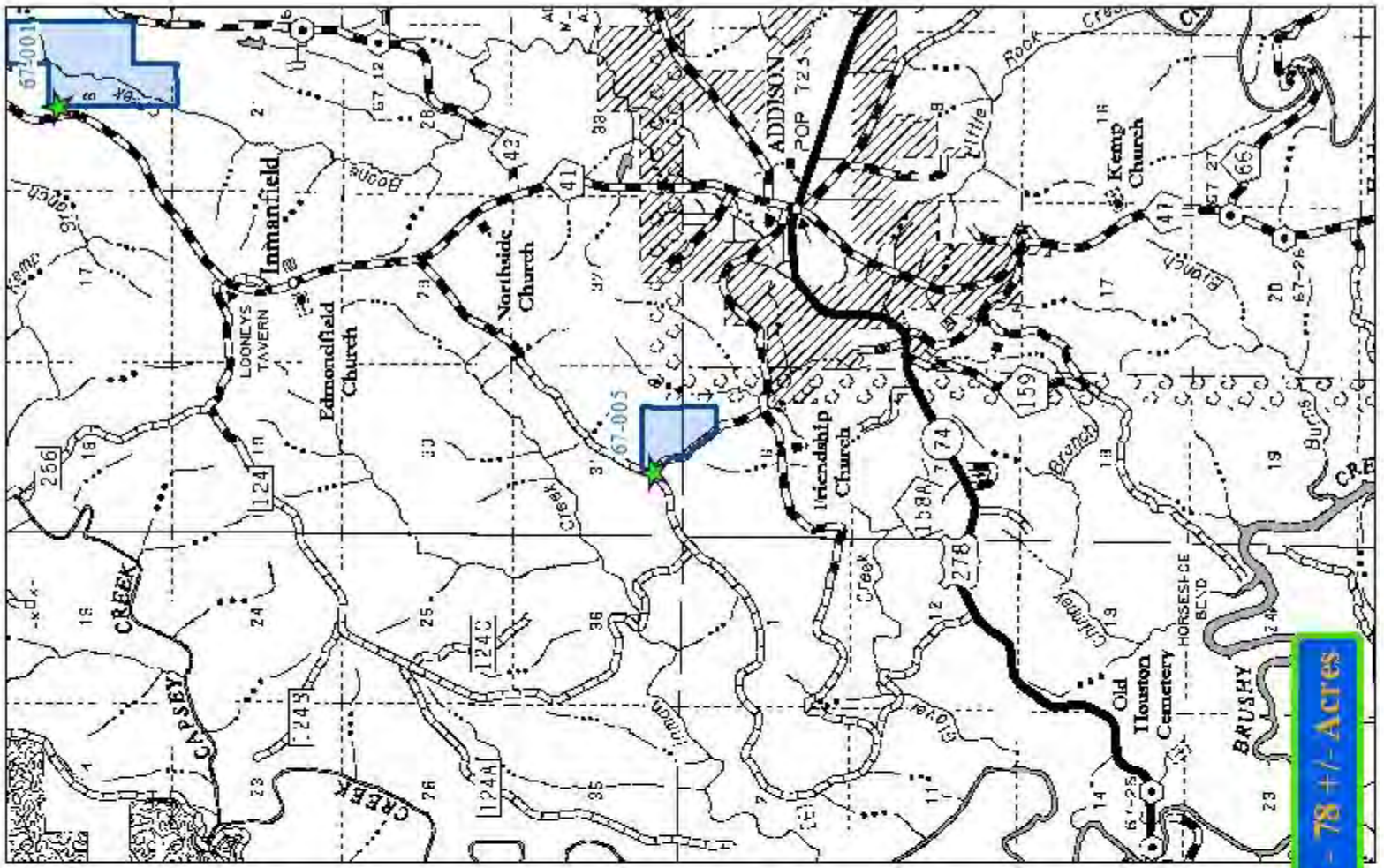
### 2012 Stands

#### Type

- Natural Bottomland
- Natural Sloping
- Natural Upland
- Non Timbered
- Planted Upland







**67-005 Spiller Hill - 78 +/- Acres**

Addison 278 © 2010 NAVTEQ Corporation

**Great Southern Land**  
Hann Rd