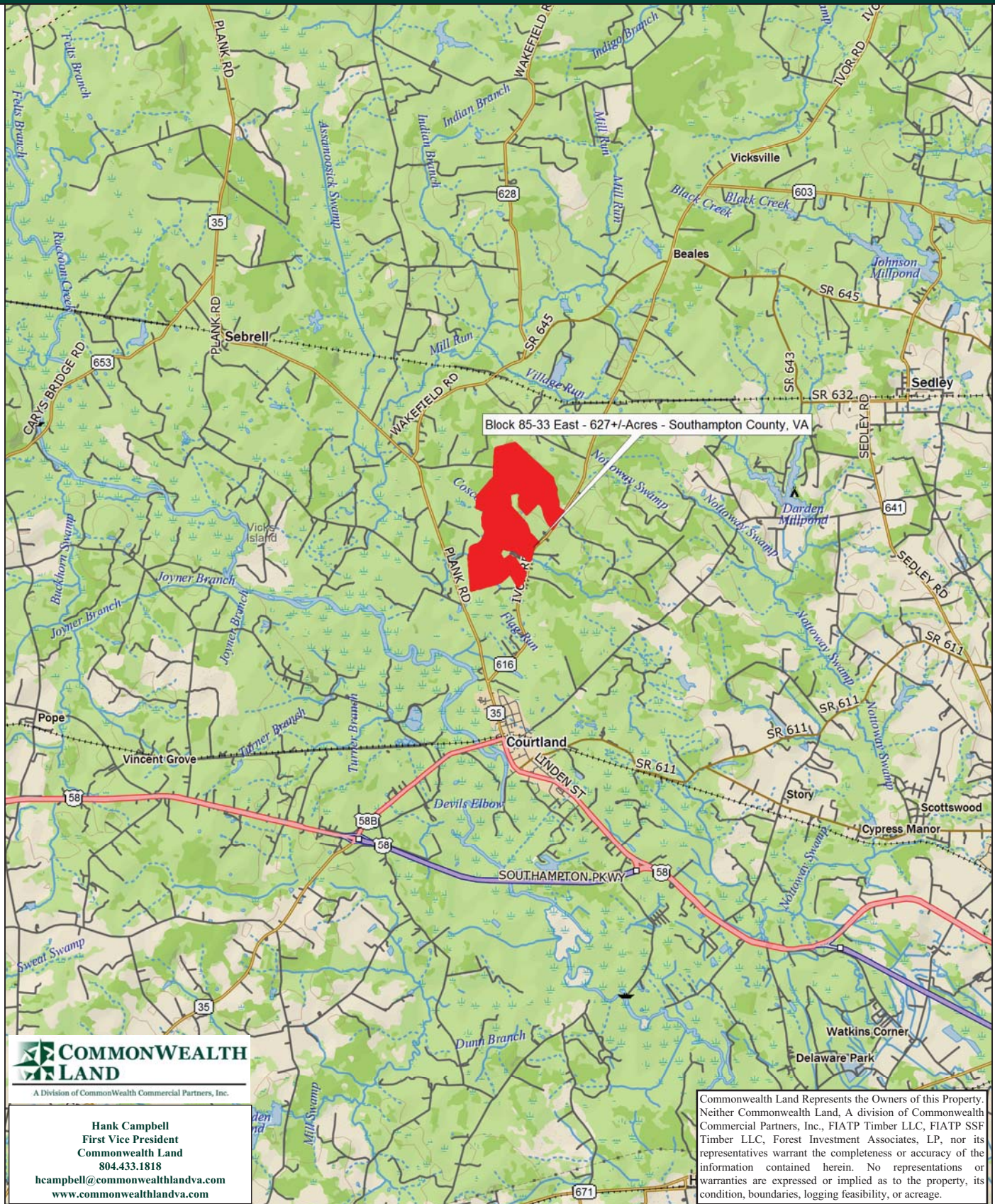


Timberland Investment Opportunity

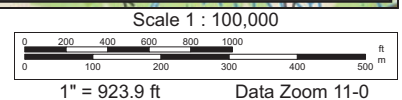
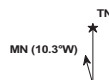
Block 85-33 East - 627+/- Acres - Southampton County, VA



Data use subject to license.

© DeLorme. XMap® 8.

www.delorme.com



Tract Summary Data

Block 85-33 East - 627+/- Acres - Southampton County, VA

***Excellent Long-Term Timberland Investment Opportunity Offering Strong Recreational Potential**

***Located North of Courtland with Frontage Along VSR616 (Ivor Rd.)**

***Timber Comprised Primarily of Planted Loblolly Pine with 323+/-Acres Established in '03, 141.8+/-Acres Established in '07, 79+/-Acres Established in '08 with the Remaining Balance of the tract in a Natural Pine and Hardwood Stand from '71**

***Currently Zoned A1 (Agricultural) and Identified as Tax Map Parcels #45-21, 24 & 26, #60-104 & 105A**

***N36-44.979' W77-3.729'**

***Level Site with Strong Internal Road System and Frontage on the Coscorie Branch (Perennial) Offering Excellent Wildlife Habitat and Strong Populations of Deer & Turkeys**

***Directions - Take I-95 South from Richmond to Exit #41 (Courtland), Then Travel South on VSR35 (Courtland Rd.) for Approximately 29 Miles and Take a Left on VSR628 (Wakefield Rd.). Travel 1.38 Miles and Take a Right on VSR728 (Guys Place Rd.) and Travel 1.52 Miles to VSR628 (Ivor Rd.). Take a Right on Ivor Road and Travel 1.2 Miles to the Property Entrance on the Right.**

***Contact Broker For More Details**

***Offered For \$910,000**

Contact:

Hank Campbell

First Vice President

Commonwealth Land

Office: 804.433.1818

Fax: 804.346.5901

Cell: 804.334.3136

hcampbell@commonwealthlandva.com

Property Information is Available at *Commonwealthlandva.com* & *LandsofAmerica.com*

CLIENT: FIA TP-FRANKLIN
TRACT: BLOCK 85-33 EAST -526
SOUTHAMPTON, VA ACRES: 627.49



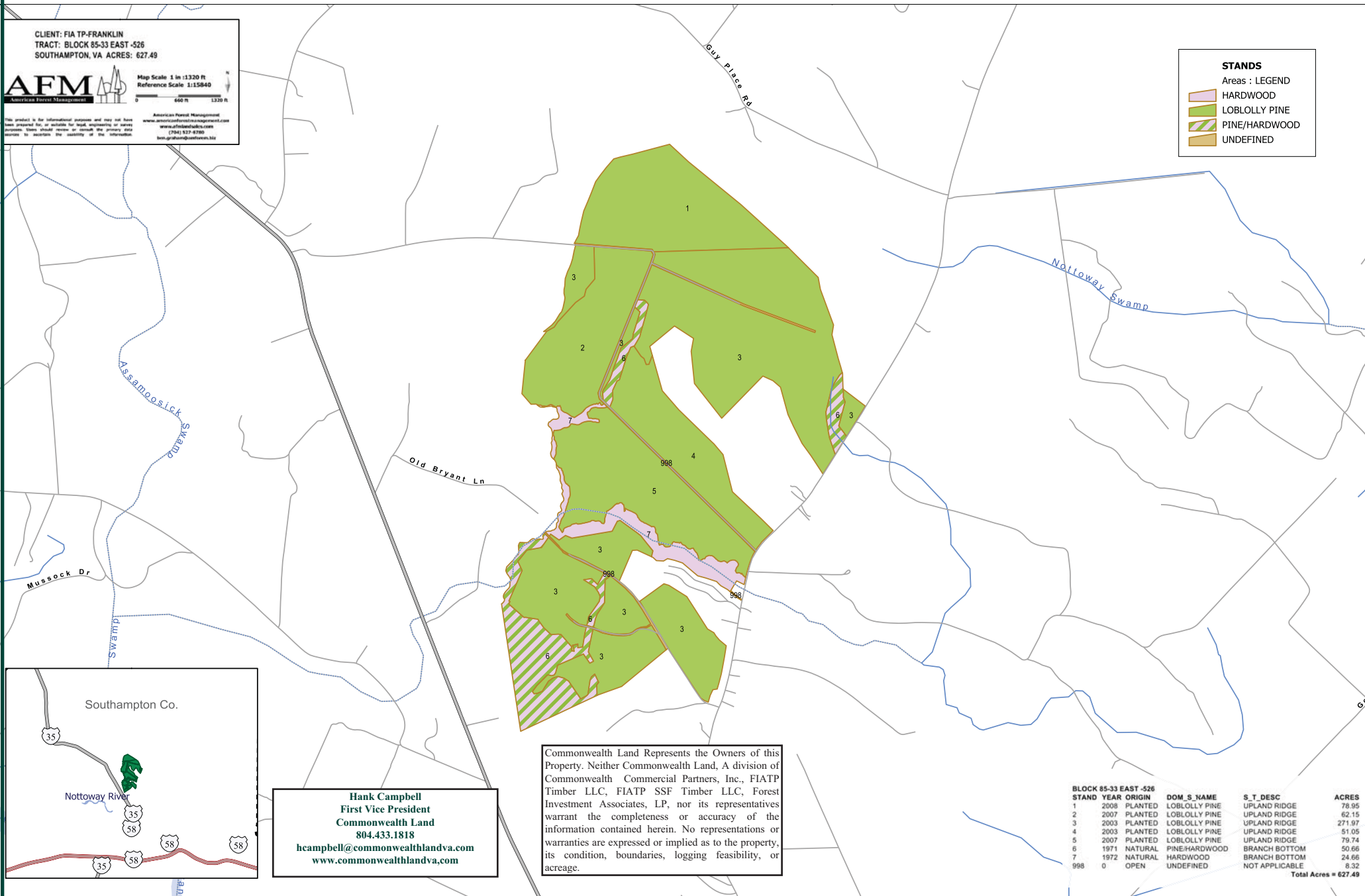
Map Scale 1 in = 1320 ft
Reference Scale 1:15840
0 660 ft 1320 ft

This product is for informational purposes and may not have been presented for or suitable for legal, engineering or survey purposes. Users should review or consult the primary data source to ascertain the accuracy of the information.
American Forest Management
www.americanforestmanagement.com
www.afmforestry.com
(704) 527-4700
info@afmforestry.com

STANDS

Areas : LEGEND

- HARDWOOD
- LOBLOLLY PINE
- PINE/HARDWOOD
- UNDEFINED



Commonwealth Land Represents the Owners of this Property. Neither Commonwealth Land, A division of Commonwealth Commercial Partners, Inc., FIATP Timber LLC, FIATP SSF Timber LLC, Forest Investment Associates, LP, nor its representatives warrant the completeness or accuracy of the information contained herein. No representations or warranties are expressed or implied as to the property, its condition, boundaries, logging feasibility, or acreage.

Hank Campbell
First Vice President
Commonwealth Land
804.433.1818
hcampbell@commonwealthlandva.com
www.commonwealthlandva.com

STAND	YEAR	ORIGIN	DOM_S_NAME	S_T_DESC	ACRES
1	2008	PLANTED	LOBLOLLY PINE	UPLAND RIDGE	78.95
2	2007	PLANTED	LOBLOLLY PINE	UPLAND RIDGE	62.15
3	2003	PLANTED	LOBLOLLY PINE	UPLAND RIDGE	271.97
4	2003	PLANTED	LOBLOLLY PINE	UPLAND RIDGE	51.05
5	2007	PLANTED	LOBLOLLY PINE	UPLAND RIDGE	79.74
6	1971	NATURAL	PINE/HARDWOOD	BRANCH BOTTOM	50.66
7	1972	NATURAL	HARDWOOD	BRANCH BOTTOM	24.66
998	0	OPEN	UNDEFINED	NOT APPLICABLE	8.32
Total Acres = 627.49					



Condition Summary Report

Parameters:

Client: FIA TP
MU: FRANKLIN

Tract: BLOCK 85-33 EAST (14525260)
Compartment: Not Specified

Convertability Acreage Summary of Timbered Pine Stands Acreage and Volume (Tons) By Convertability Class

Convertability	Acres	%	PINE Pulp	PINE CNS	PINE Saw	HW Pulp	HW Saw	CYP Pulp	CYP Saw
Convertible	543.84	86.7	0.00	0.00	0.00	0.00	0.00	0.00	0.00
Non-Convertible	83.64	13.3	282.75	653.72	1,422.53	1,304.52	213.12	0.00	0.00
	627.48		282.75	653.72	1,422.53	1,304.52	213.12	0.00	0.00

Pre-Merchantable Acreage Summary of Timbered Pine Stands Acres By Established Year and Establishment Type

Year Established	Stand Age	Planted Acres	Natural Acres	Total Acres
2008	4	78.95	0.00	78.95
2007	5	141.88	0.00	141.88
2003	9	323.01	0.00	323.01
Pre-Merchantable Total		543.84	0.00	543.84

Timber Type Summary - Acreage By Timber Type

Timber Type	Acres
Hardwood	24.66
Non-Forest	8.32
Pine Natural	50.66
Pine Planted	543.84
Total	627.48



A Division of Commonwealth Commercial Partners, Inc.

Hank Campbell
First Vice President
Commonwealth Land
804.433.1818
hcampbell@commonwealthlandva.com
www.commonwealthlandva.com

Commonwealth Land Represents the Owners of this Property. Neither Commonwealth Land, A division of Commonwealth Commercial Partners, Inc., FIATP Timber LLC, FIATP SSF Timber LLC, Forest Investment Associates, LP, nor its representatives warrant the completeness or accuracy of the information contained herein. No representations or warranties are expressed or implied as to the property, its condition, boundaries, logging feasibility, or acreage.



Forest Investment Associates Stand Volume Summary Report

Report: Stand Volume Summary

Management Unit: FRANKLIN

Report Date: Friday, September 14, 2012

10:15 am

Tract: BLOCK 85-33 EAST (14525260)

Client: FIA TP

Units:

Client: FIA TP Management Unit: FRANKLIN Tract Code: 14525260 Tract Name: BLOCK 85-33 EAST (14525260)

Comp	Std	Desc	Acres	Year			Pine						Hardwood					Cypress				
				Est	SQ	Ht	TPA	BA	Pulp	CNS	Saw	Total	TPA	BA	Pulp	Saw	Total	TPA	BA	Pulp	Saw	Total
526	1	LBURPY1L	78.95	2008	60	82.0	544.0	0.0	0.0	0.0	0.0	0.0	0.0	0.0	0.0	0.0	0.0	0.0	0.0	0.0	0.0	0.0
526	2	LBURPY1L	62.15	2007	62		540.0	0.0	0.0	0.0	0.0	0.0	0.0	0.0	0.0	0.0	0.0	0.0	0.0	0.0	0.0	0.0
526	3	LBURPY1L	271.97	2003	54		481.7	59.6	0.0	0.0	0.0	0.0	0.0	0.0	0.0	0.0	0.0	0.0	0.0	0.0	0.0	0.0
526	4	LBURPY1L	51.05	2003	65		547.3	80.8	0.0	0.0	0.0	0.0	0.0	0.0	0.0	0.0	0.0	0.0	0.0	0.0	0.0	0.0
526	5	LBURPY1L	79.73	2007	67		540.0	0.0	0.0	0.0	0.0	0.0	0.0	0.0	0.0	0.0	0.0	0.0	0.0	0.0	0.0	0.0
526	6	PHBBNN5L	50.66	1971	97		41.8	48.9	5.6	12.9	28.1	46.6	44.4	37.3	20.3	4.2	24.5	0.0	0.0	0.0	0.0	0.0
526	7	HWBBNN5L	24.66	1972	64		0.0	0.0	0.0	0.0	0.0	0.0	193.5	72.3	11.2	0.0	11.2	0.0	0.0	0.0	0.0	0.0
526	998	UDNAON4L	8.32	0			0.0	0.0	0.0	0.0	0.0	0.0	0.0	0.0	0.0	0.0	0.0	0.0	0.0	0.0	0.0	0.0
Grand Total			627.48						653.72		46.57				213.12					0.00		



A Division of Commonwealth Commercial Partners, Inc.

Hank Campbell
First Vice President
Commonwealth Land
804.433.1818

hcampbell@commonwealthandva.com
www.commonwealthandva.com

for the stand and Pulp, CNS, Saw and Tot are per acre values. The pulp column may include topwood volume.

Commonwealth Land Represents the Owners of this Property. Neither Commonwealth Land, A division of Commonwealth Commercial Partners, Inc., FIATP Timber LLC, FIATP SSF Timber LLC, Forest Investment Associates, LP, nor its representatives warrant the completeness or accuracy of the information contained herein. No representations or warranties are expressed or implied as to the property, its condition, boundaries, logging feasibility, or acreage.

Block 85-33 East
627+/- Acres
Southampton County, VA
Approximate Tract Boundaries Shown in Red



COMMONWEALTH LAND
A Division of Commonwealth Commercial Partners, Inc.

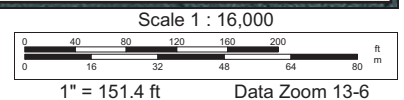
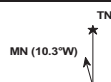
Hank Campbell
First Vice President
Commonwealth Land
804.433.1818
hcampbell@commonwealthlandva.com
www.commonwealthlandva.com

Commonwealth Land Represents the Owners of this Property. Neither Commonwealth Land, A division of Commonwealth Commercial Partners, Inc., FIATP Timber LLC, FIATP SSF Timber LLC, Forest Investment Associates, LP, nor its representatives warrant the completeness or accuracy of the information contained herein. No representations or warranties are expressed or implied as to the property, its condition, boundaries, logging feasibility, or acreage.

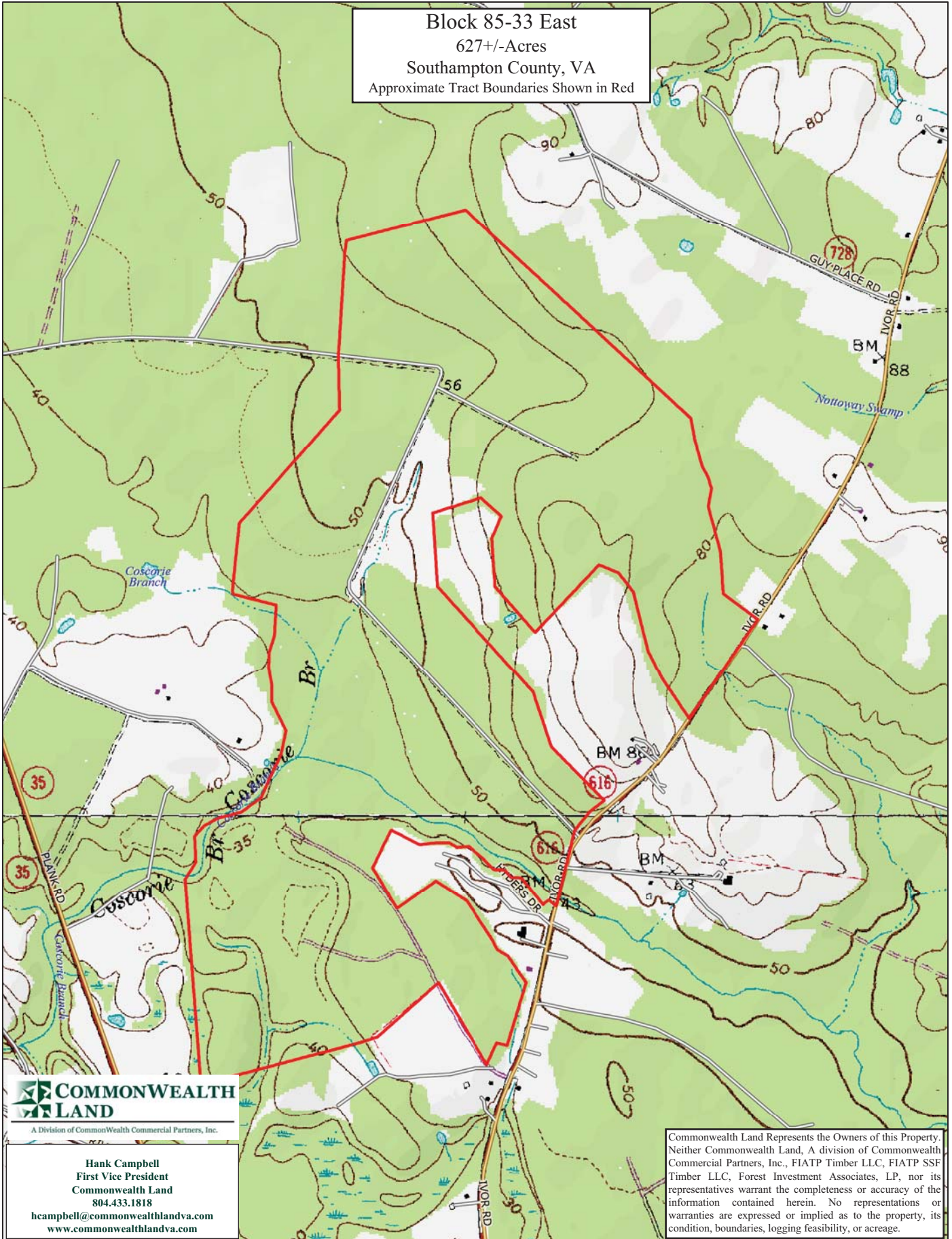
Data use subject to license.

© DeLorme. XMap® 8.

www.delorme.com



Block 85-33 East
627+/-Acres
Southampton County, VA
Approximate Tract Boundaries Shown in Red



COMMONWEALTH LAND
A Division of Commonwealth Commercial Partners, Inc.

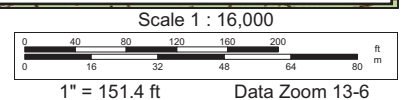
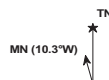
Hank Campbell
First Vice President
Commonwealth Land
804.433.1818
hcampbell@commonwealthlandva.com
www.commonwealthlandva.com

Commonwealth Land Represents the Owners of this Property. Neither Commonwealth Land, A division of Commonwealth Commercial Partners, Inc., FIATP Timber LLC, FIATP SSF Timber LLC, Forest Investment Associates, LP, nor its representatives warrant the completeness or accuracy of the information contained herein. No representations or warranties are expressed or implied as to the property, its condition, boundaries, logging feasibility, or acreage.

Data use subject to license.

© DeLorme. XMap® 8.

www.delorme.com



Block 85-33 East Photos



A Division of Commonwealth Commercial Partners, Inc.

Hank Campbell
First Vice President
Commonwealth Land
804.433.1818
hcampbell@commonwealthandva.com
www.commonwealthandva.com

Commonwealth Land Represents the Owners of this Property. Neither Commonwealth Land, A division of Commonwealth Commercial Partners, Inc., FIATP Timber LLC, FIATP SSF Timber LLC, Forest Investment Associates, LP, nor its representatives warrant the completeness or accuracy of the information contained herein. No representations or warranties are expressed or implied as to the property, its condition, boundaries, logging feasibility, or acreage.