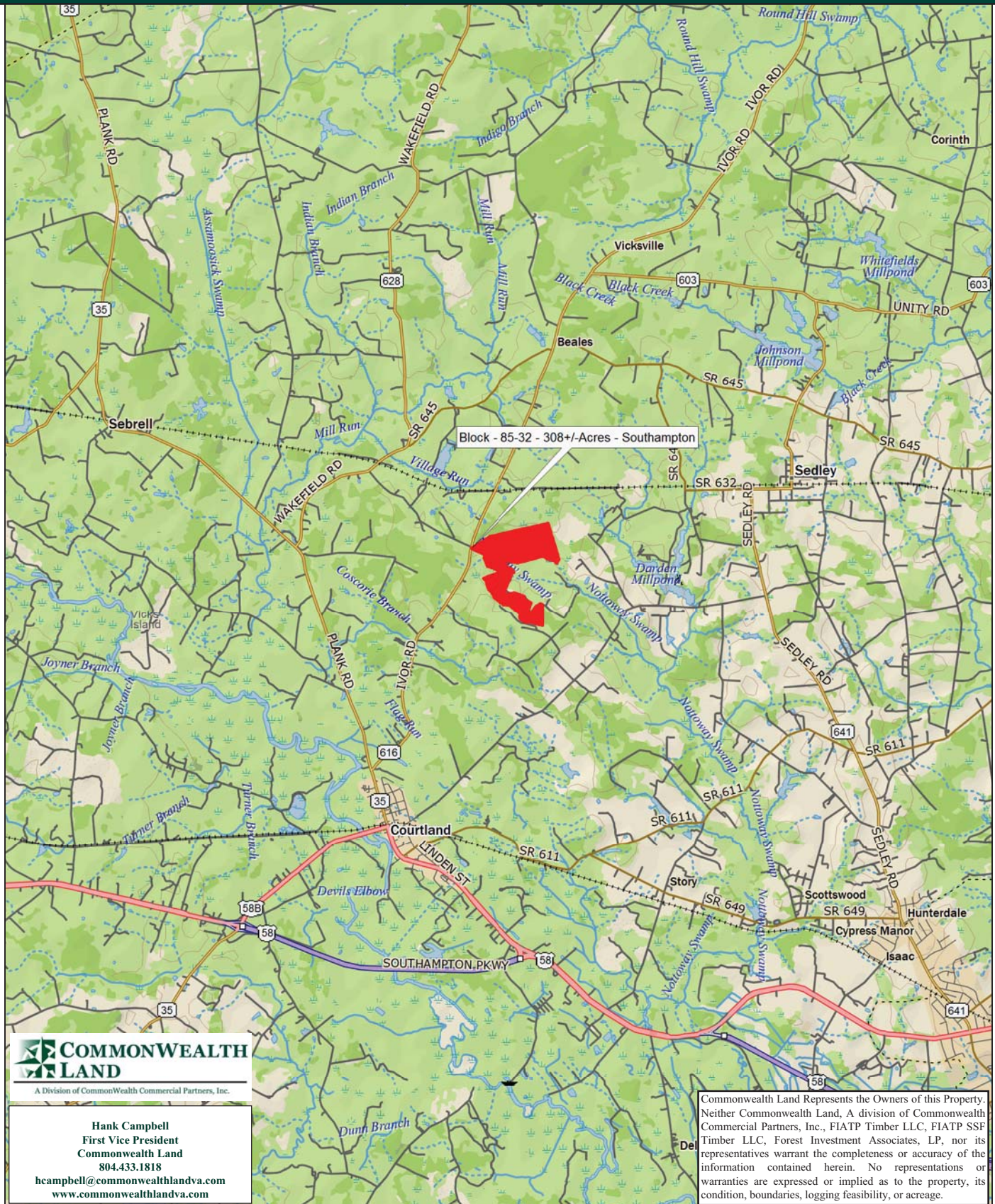


Timberland Investment Opportunity

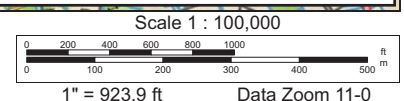
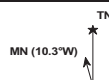
Block 85-32 - 308+/- Acres - Southampton County, VA



Data use subject to license.

© DeLorme. XMap® 8.

www.delorme.com



Tract Summary Data

Block 85-32 - 308+/- Acres - Southampton County, VA

***Excellent Timberland Investment Opportunity Offering Strong Recreational Potential**

***Located North of Courtland with Frontage Along VSR616 (Ivor Rd.)**

***Timber Comprised of Planted Loblolly Pine with 165+/-Acres Established in '01, 117+/-Acres Established in '08 with the Remaining Balance of the tract in Branch Bottom.**

***Currently Zoned A1 (Agricultural) and Identified as Tax Map Parcels #45-27 & 36**

***N36-45.852' W77-3.068'**

***Level Site with Strong Internal Road System and Frontage on the Nottoway Swamp Offering Excellent Wildlife Habitat and Strong Populations of Deer & Turkeys**

***Directions - Take I-95 South from Richmond to Exit #41 (Courtland), Then Travel South on VSR35 (Courtland Rd.) for Approximately 29 Miles and Take a Left on VSR628 (Wakefield Rd.). Travel 1.38 Miles and Take a Right on VSR728 (Guys Place Rd.) and Travel 1.52 Miles to VSR628 (Ivor Rd.) Where the Property Begins across the Road.**

***Contact Broker For More Details**

***Offered For \$460,000**

Contact:

Hank Campbell

First Vice President

Commonwealth Land

Office: 804.433.1818

Fax: 804.346.5901

Cell: 804.334.3136

hcampbell@commonwealthlandva.com

Property Information is Available at *Commonwealthlandva.com* & *LandsofAmerica.com*

CLIENT: FIA TP-FRANKLIN
TRACT: BLOCK 85-32 -526
SOUTHAMPTON, VA ACRES: 308.95



Map Scale 1 in :1320 ft
Reference Scale 1:15840

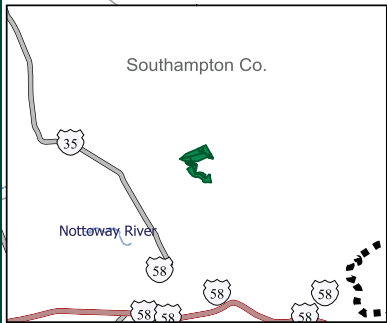
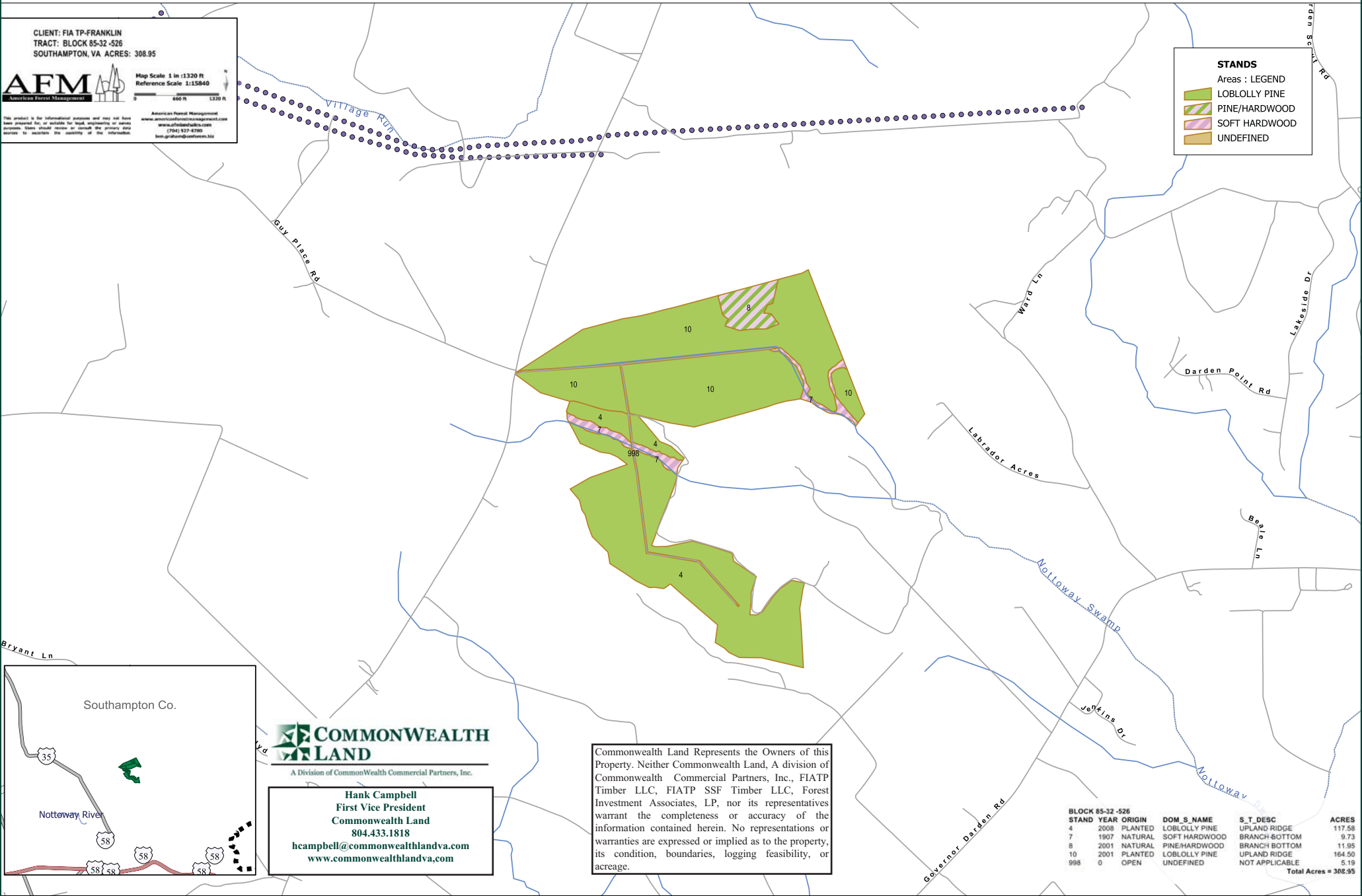
American Forest Management
www.americanforestmanagement.com
www.afmforestry.com
(704) 527-4700
bmcgrath@afmforestry.com

This product is for informational purposes and may not have been prepared for or suitable for legal, engineering or survey purposes. Users should consult or consult the primary data source to establish the accuracy of the information.

STANDS

Areas : LEGEND

- LOBLOLLY PINE
- PINE/HARDWOOD
- SOFT HARDWOOD
- UNDEFINED



COMMONWEALTH LAND
A Division of Commonwealth Commercial Partners, Inc.

Hank Campbell
First Vice President
Commonwealth Land
804.433.1818
hcampbell@commonwealthlandva.com
www.commonwealthlandva.com

Commonwealth Land Represents the Owners of this Property. Neither Commonwealth Land, A division of Commonwealth Commercial Partners, Inc., FIATP Timber LLC, FIATP SSF Timber LLC, Forest Investment Associates, LP, nor its representatives warrant the completeness or accuracy of the information contained herein. No representations or warranties are expressed or implied as to the property, its condition, boundaries, logging feasibility, or acreage.

BLOCK 85-32 -526						
STAND	YEAR	ORIGIN	DOM S NAME	S T DESC	ACRES	
4	2008	PLANTED	LOBLOLLY PINE	UPLAND RIDGE	117.58	
7	1907	NATURAL	SOFT HARDWOOD	BRANCH BOTTOM	9.73	
8	2001	NATURAL	PINE/HARDWOOD	BRANCH BOTTOM	11.95	
10	2001	PLANTED	LOBLOLLY PINE	UPLAND RIDGE	164.50	
998	0	OPEN	UNDEFINED	NOT APPLICABLE	5.19	
					Total Acres = 308.95	

Condition Summary Report

Client: FIA TP
MU: FRANKLIN

Tract: BLOCK 85-32
Compartment: SUBJECT PROPERTY

Convertability Acreage Summary of Timbered Pine Stands Acreage and Volume By Convertability Class

Convertability	Acres	%	Pine Tons			Hardwood Tons		Cypress Tons	
			Pulp	CNS	Saw	Pulp	Saw	Pulp	Saw
Convertible	282.08	100.00	0.00	0.00	0.00	0.00	0.00	0.00	0.00
Non-Convertible	0.00	0.00	0.00	0.00	0.00	0.00	0.00	0.00	0.00
	282.08		0.00	0.00	0.00	0.00	0.00	0.00	0.00

Pre-Merchantable Acreage Summary of Timbered Pine Stands Acres By Established Year and Establishment Type

Year Established	Stand Age	Planted Acres	Natural Acres	Total Acres
2012	0	0.00	0.00	0.00
2011	1	0.00	0.00	0.00
2010	2	0.00	0.00	0.00
2009	3	0.00	0.00	0.00
2008	4	117.58	0.00	117.58
2007	5	0.00	0.00	0.00
2006	6	0.00	0.00	0.00
2005	7	0.00	0.00	0.00
2004	8	0.00	0.00	0.00
2003	9	0.00	0.00	0.00
2002	10	0.00	0.00	0.00
2001	11	164.50	0.00	164.50
2000	12	0.00	0.00	0.00
1999	13	0.00	0.00	0.00
1998	14	0.00	0.00	0.00
Pre-Merchantable Total		282.08	0.00	282.08

Timber Type Summary - Acreage By Timber Type

Timber Type	Acres
Cutover	0.00
Hardwood	0.00
Natural Pine	0.00
Non-Forest	0.00
Planted Pine	282.08
Seeded Pine	0.00
Total	282.08



A Division of Commonwealth Commercial Partners, Inc.

Hank Campbell
First Vice President
Commonwealth Land
804.433.1818
hcampbell@commonwealthlandva.com
www.commonwealthlandva.com

Commonwealth Land Represents the Owners of this Property. Neither Commonwealth Land, A division of Commonwealth Commercial Partners, Inc., FIATP Timber LLC, FIATP SSF Timber LLC, Forest Investment Associates, LP, nor its representatives warrant the completeness or accuracy of the information contained herein. No representations or warranties are expressed or implied as to the property, its condition, boundaries, logging feasibility, or acreage.



Forest Investment Associates Stand Volume Summary Report

Report: Stand Volume Summary

Management Unit: FRANKLIN

Report Date: Monday, September 17, 2012 10:12 am

Tract: BLOCK 85-32 (14525250)

Client: FIA TP

Units: Per Acre

Client: FIA TP Management Unit: FRANKLIN Tract Code: 14525250 Tract Name: BLOCK 85-32 (14525250)

Year							Pine					Hardwood					Cypress						
Comp	Std	Desc	Acres	Est	SQ	Ht	TPA	BA	Pulp	CNS	Saw	Total	TPA	BA	Pulp	Saw	Total	TPA	BA	Pulp	Saw	Total	
526	4	LBURPY1L	117.58	2008	70	0.0	544.0	0.0	0.0	0.0	0.0	0.0	0.0	0.0	0.0	0.0	0.0	0.0	0.0	0.0	0.0	0.0	
526	7	SHBBNN5L	9.73	1907	61		0.0	0.0	0.0	0.0	0.0	0.0	0.0	6.2	7.8	5.2	0.0	5.2	36.4	38.8	9.2	15.3	24.4
526	8	PHBBNN4L	11.95	2001	63		0.0	0.0	0.0	0.0	0.0	0.0	0.0	0.0	0.0	0.0	0.0	0.0	0.0	0.0	0.0	0.0	0.0
526	10	LBURPY1L	164.50	2001	63		286.3	63.2	0.0	0.0	0.0	0.0	0.0	0.0	0.0	0.0	0.0	0.0	0.0	0.0	0.0	0.0	0.0
526	998	UDNAON4L	5.19	0			0.0	0.0	0.0	0.0	0.0	0.0	0.0	0.0	0.0	0.0	0.0	0.0	0.0	0.0	0.0	0.0	

Grand Total 308.95



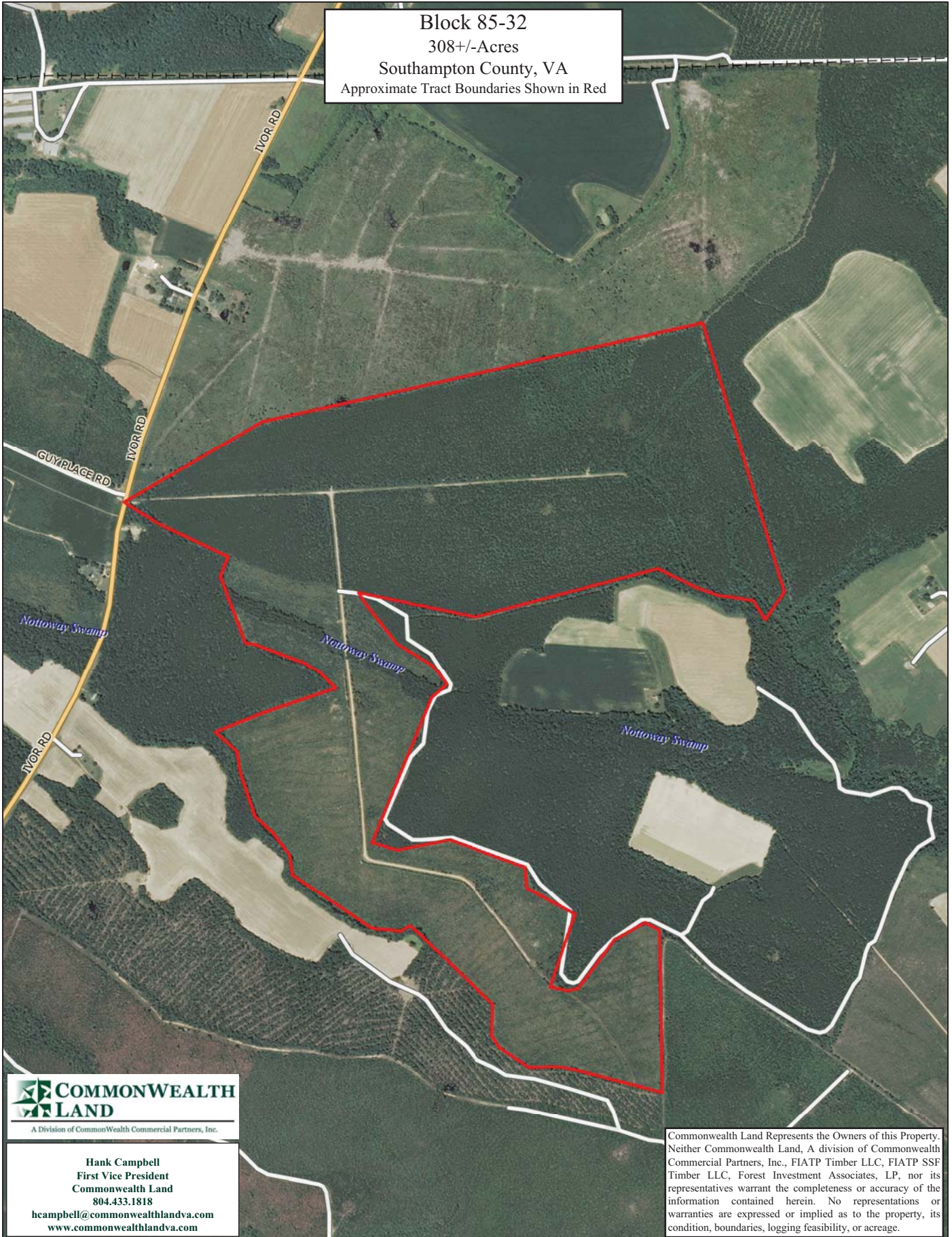
A Division of Commonwealth Commercial Partners, Inc.

Hank Campbell
First Vice President
Commonwealth Land
804.433.1818
hcampbell@commonwealthandva.com
www.commonwealthandva.com

for the stand and Pulp, CNS, Saw and Tot are per acre values. The pulp column may include topwood volume.

Commonwealth Land Represents the Owners of this Property. Neither Commonwealth Land, A division of Commonwealth Commercial Partners, Inc., FIATP Timber LLC, FIATP SSF Timber LLC, Forest Investment Associates, LP, nor its representatives warrant the completeness or accuracy of the information contained herein. No representations or warranties are expressed or implied as to the property, its condition, boundaries, logging feasibility, or acreage.

Block 85-32
308+/-Acres
Southampton County, VA
Approximate Tract Boundaries Shown in Red



COMMONWEALTH LAND
A Division of Commonwealth Commercial Partners, Inc.

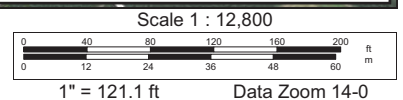
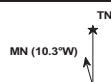
Hank Campbell
First Vice President
Commonwealth Land
804.433.1818
hcampbell@commonwealthlandva.com
www.commonwealthlandva.com

Commonwealth Land Represents the Owners of this Property. Neither Commonwealth Land, A division of Commonwealth Commercial Partners, Inc., FIATP Timber LLC, FIATP SSF Timber LLC, Forest Investment Associates, LP, nor its representatives warrant the completeness or accuracy of the information contained herein. No representations or warranties are expressed or implied as to the property, its condition, boundaries, logging feasibility, or acreage.

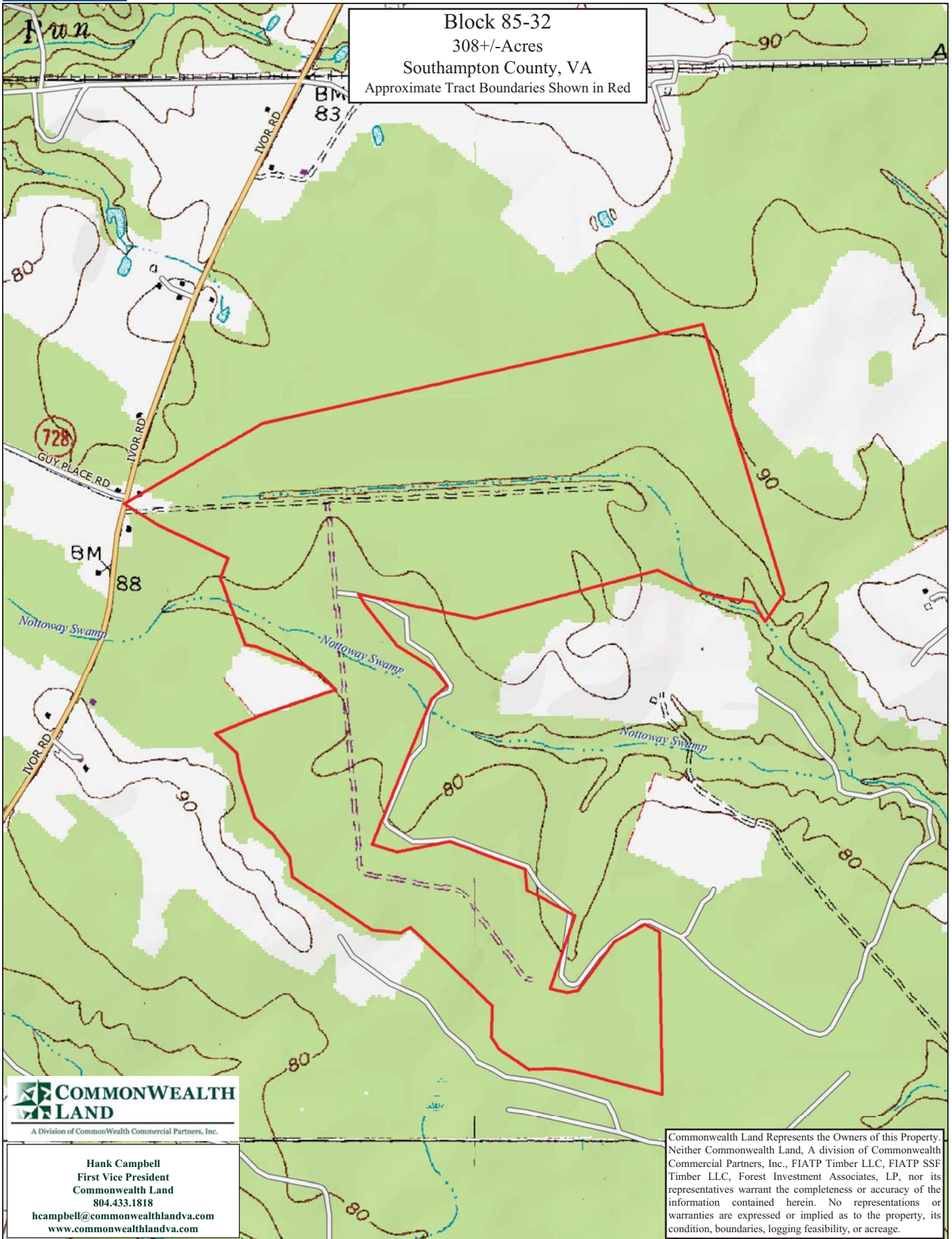
Data use subject to license.

© DeLorme. XMap® 8.

www.delorme.com



Block 85-32
308+/-Acres
Southampton County, VA
Approximate Tract Boundaries Shown in Red



A Division of Commonwealth Commercial Partners, Inc.

Hank Campbell
First Vice President
Commonwealth Land
804.433.1818

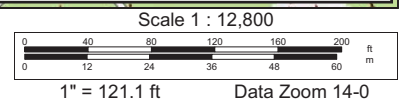
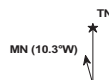
hcampbell@commonwealthlandva.com
www.commonwealthlandva.com

Commonwealth Land Represents the Owners of this Property. Neither Commonwealth Land, A division of Commonwealth Commercial Partners, Inc., FIATP Timber LLC, FIATP SSF Timber LLC, Forest Investment Associates, LP, nor its representatives warrant the completeness or accuracy of the information contained herein. No representations or warranties are expressed or implied as to the property, its condition, boundaries, logging feasibility, or acreage.

Data use subject to license.

© DeLorme. XMap® 8.

www.delorme.com



Block 85-32 Photos



A Division of Commonwealth Commercial Partners, Inc.

Hank Campbell
First Vice President
Commonwealth Land
804.433.1818

hcampbell@commonwealthlandva.com
www.commonwealthlandva.com

Commonwealth Land Represents the Owners of this Property. Neither Commonwealth Land, A division of Commonwealth Commercial Partners, Inc., FIATP Timber LLC, FIATP SSF Timber LLC, Forest Investment Associates, LP, nor its representatives warrant the completeness or accuracy of the information contained herein. No representations or warranties are expressed or implied as to the property, its condition, boundaries, logging feasibility, or acreage.