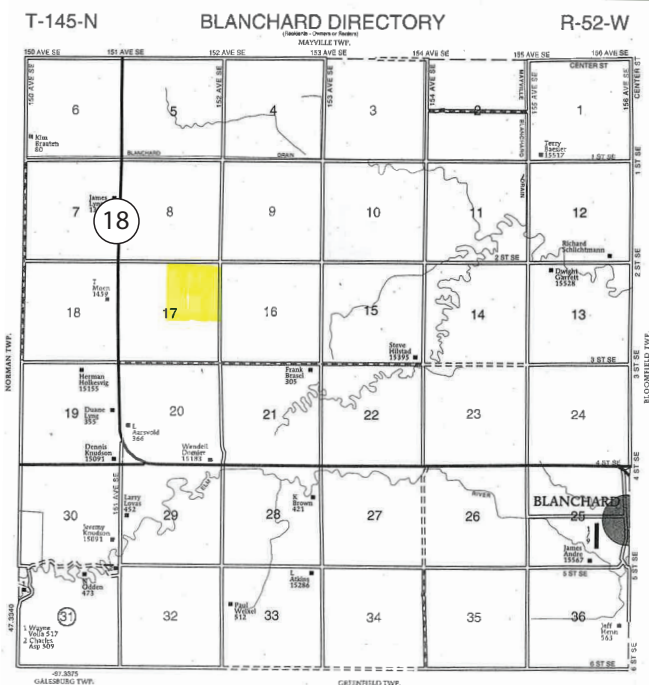


For Sale Traill County, North Dakota Farm Land

NE ¼ Section 17-145-52

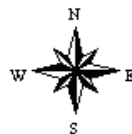
Approximately 160.00 Acres



Total Acres 160.00
Tillable Acres 154.98
2012 Net Discounted R.E. Taxes \$2662.02
Weighted Average Productivity 85.7%
Excellent RRV Land

Directions: From the curve North of Blanchard, ND go 3 miles West on HWY 18 and then curves North 2 miles to 2 nd St SE then go 1 mile East to 152nd Ave SE. You are now at the NE corner of the property

3rd St SE



*All information contained herein is believed to be true but should be verified to the buyer's satisfaction in case of error, typographical or otherwise. All information is subject to change without further notice.

Steve D. Johnson
 Real Estate Broker
 Auctioneer License #976
 701-799-5213
steve@johnsonauctionandrealty.com

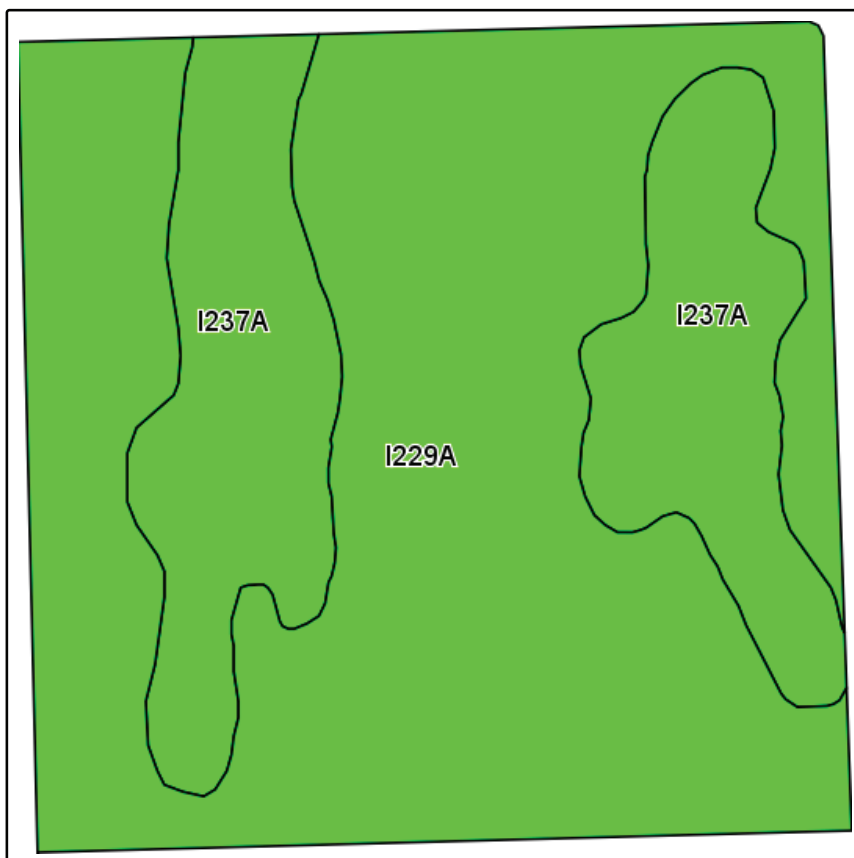


2867 28th Ave S | Fargo, ND 58103
www.johnsonauctionandrealty.com

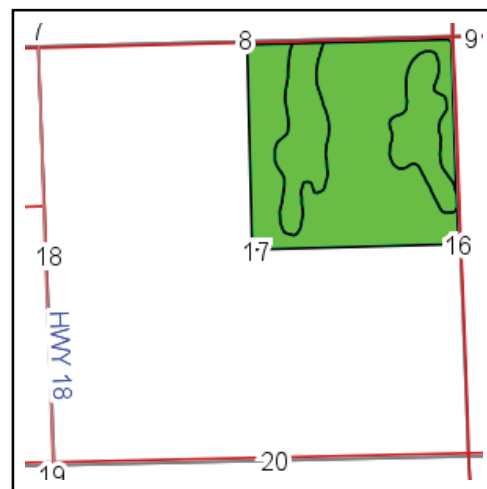
For Sale Trail County, North Dakota Farm Land

NE ¼ Section 17-145-52

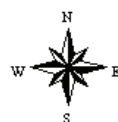
Approximately 160.00 Acres



Field borders provided by Farm Service Agency as of 5/21/2008.
Soils data provided by USDA and NRCS.



State: **North Dakota**
County: **Trail**
Location: **17-145N-52W**
Township: **Blanchard**
Acres: **155**
Date: **1/2/2013**



Code	Soil Description	Acres	Percent of field	Non-Irr Class Legend	Non-Irr Class	Productivity Index
I229A	Fargo silty clay, 0 to 1 percent slopes	110	71.0%		IIw	86
I237A	Fargo-Enloe complex, 0 to 2 percent slopes	45	29.0%		IIw	85
Weighted Average						85.7



*All information contained herein is believed to be true but should be verified to the buyer's satisfaction in case of error, typographical or otherwise. All information is subject to change without further notice.

Steve D. Johnson
Real Estate Broker
Auctioneer License #976
701-799-5213
steve@johnsonauctionandrealty.com



2867 28th Ave S | Fargo, ND 58103
www.johnsonauctionandrealty.com