

# 320± Ac. Rawlins Co. Grassland



320± Acres of Rawlins County land offers 308± acres grass & 12± acres cropland. Grass has two wells with good water supply, good fencing & steel corrals. The cropland is fenced from the grass. Located 4 miles southwest of Herndon or 3 1/2 miles north of Hwy 36.

## 320± Total Acres

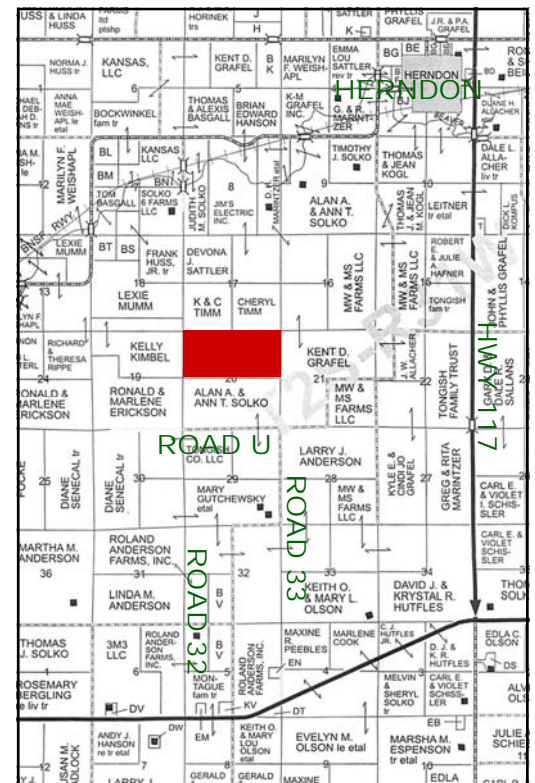
- ▶ 308± Ac. Grass
    - Good Fence
    - Permanent Corrals
    - Good Water
    - 2 Wells
      - 1 new solar unit w/new pump
      - 1 Windmill (6 yr. old) w/8 ft. Geromotor Head
  - ▶ 12± Ac. Cropland
- 2012 TAXES:** \$154.70

## Directions to Property:

At Highway 36 & Rd. 32, go 1/2 mi. east, then 2 mi. north, then 1/2 mi. east, then 1 mi. north on Rd. 33 to Rd. U, continue north on easement 1/2 mi. to southeast corner of property.

**LEGALS:** N/2 Sec. 20, 2-31  
Rawlins County, KS

**Listing Price:**  
**\$265,000**



Contact: Terry Stover, Sales Agent

785-626-2082



# SHAY REALTY, INC.

107 E. Washington, PO Box 576  
St. Francis, KS 67756  
785-332-2566  
[www.shayrealty.com](http://www.shayrealty.com)

This information, while not guaranteed, is from sources believed to be reliable.