



CURRIE RANCH SOUTHEAST



CURRIE RANCH SOUTHEAST



CURRIE RANCH SOUTHEAST



CURRIE RANCH SOUTHEAST

© 2012 Google
© 2012 Google



CURRIE RANCH SOUTHEAST



© 2012 Google

CURRIE RANCH SOUTHEAST

© 2012 Google

30°14'22.12" N 98°47'02.88" W elev 1606 ft

Google earth

Eye alt 1652 ft



Goehmann Lane / Lone

CURRIE RANCH SOUTHEAST EASTSIDE ENTRANCE



Goehmann Lane

CURRIE RANCH SOUTHEAST EASTSIDE EXIT



CURRIE RANCH SOUTHEAST



CURRIE RANCH SOUTHEAST

© 2012 Google

© 2012 Google

Google earth



CURRIE RANCH SOUTHEAST



CURRIE RANCH SOUTHEAST



CURRIE RANCH SOUTHEAST



CURRIE RANCH SOUTHEAST



CURRIE RANCH SOUTHEAST



CURRIE RANCH SOUTHEAST



CURRIE RANCH SOUTHEAST

Currie Ranch Southeast
9.88 EST acres
790' EST river frontage
700' EST road frontage

Pedernales

Goehmann Ln

Lone Star Ln

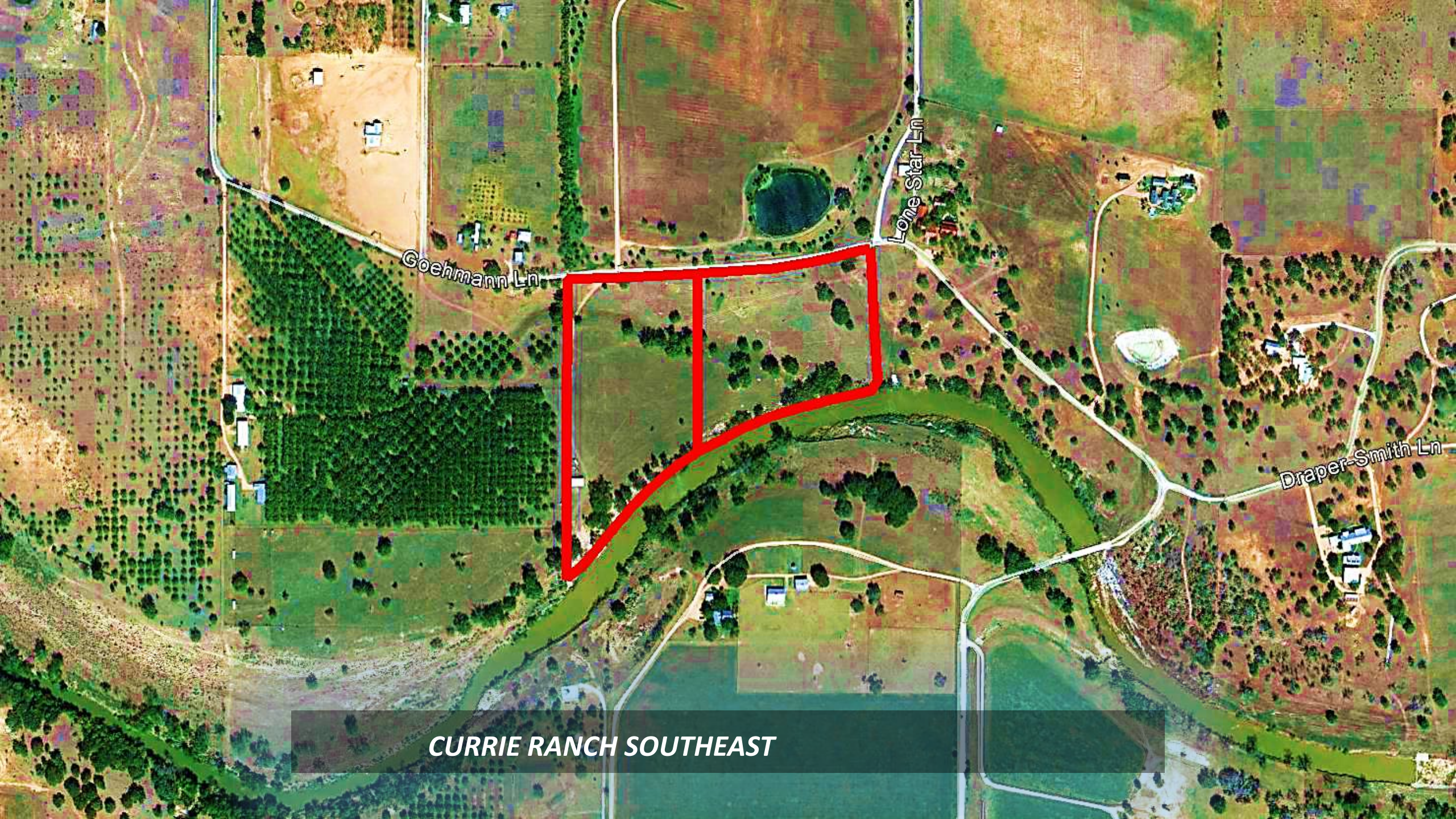
Draper-Smith Ln

CURRIE RANCH SOUTHEAST

© 2012 Google

Image USDA Farm Service Agency

Google earth



Goehmann Ln

Lone Star Ln

Draper-Smith Ln

CURRIE RANCH SOUTHEAST

***Currie Ranch 5 offerings
9.88 to 73.43 acres
Up to 1,577' river frontage
Multiple home sites***

CURRIE RANCH SOUTHEAST

© 2012 Google

Image USDA Farm Service Agency

Google earth

Currie Ranch South
21.22 EST acres
1,577' EST river frontage
1,220' EST road frontage

Pedernales

Goehmann Ln

Lone Star Ln

Draper-Smith Ln

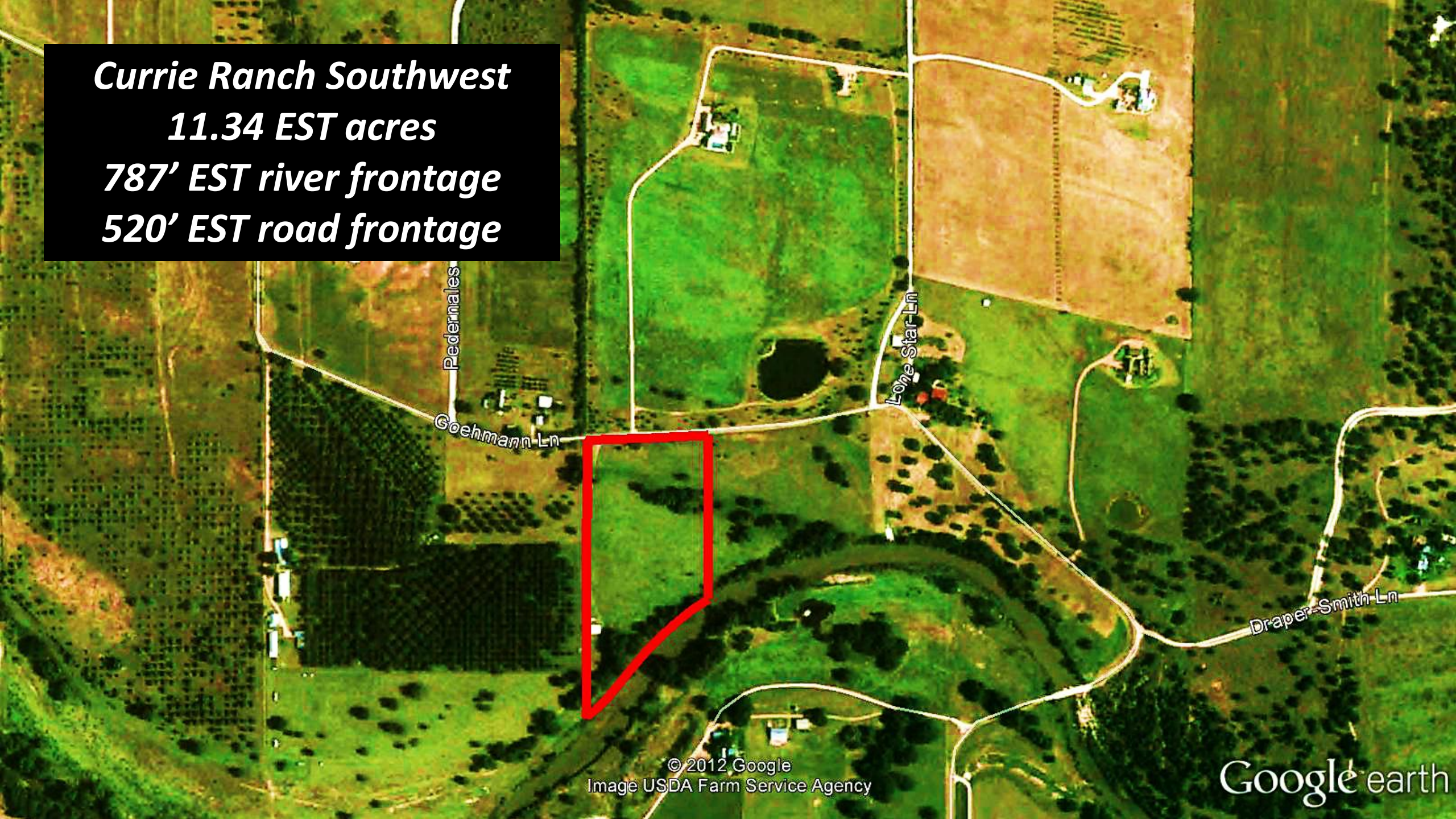
CURRIE RANCH SOUTHEAST

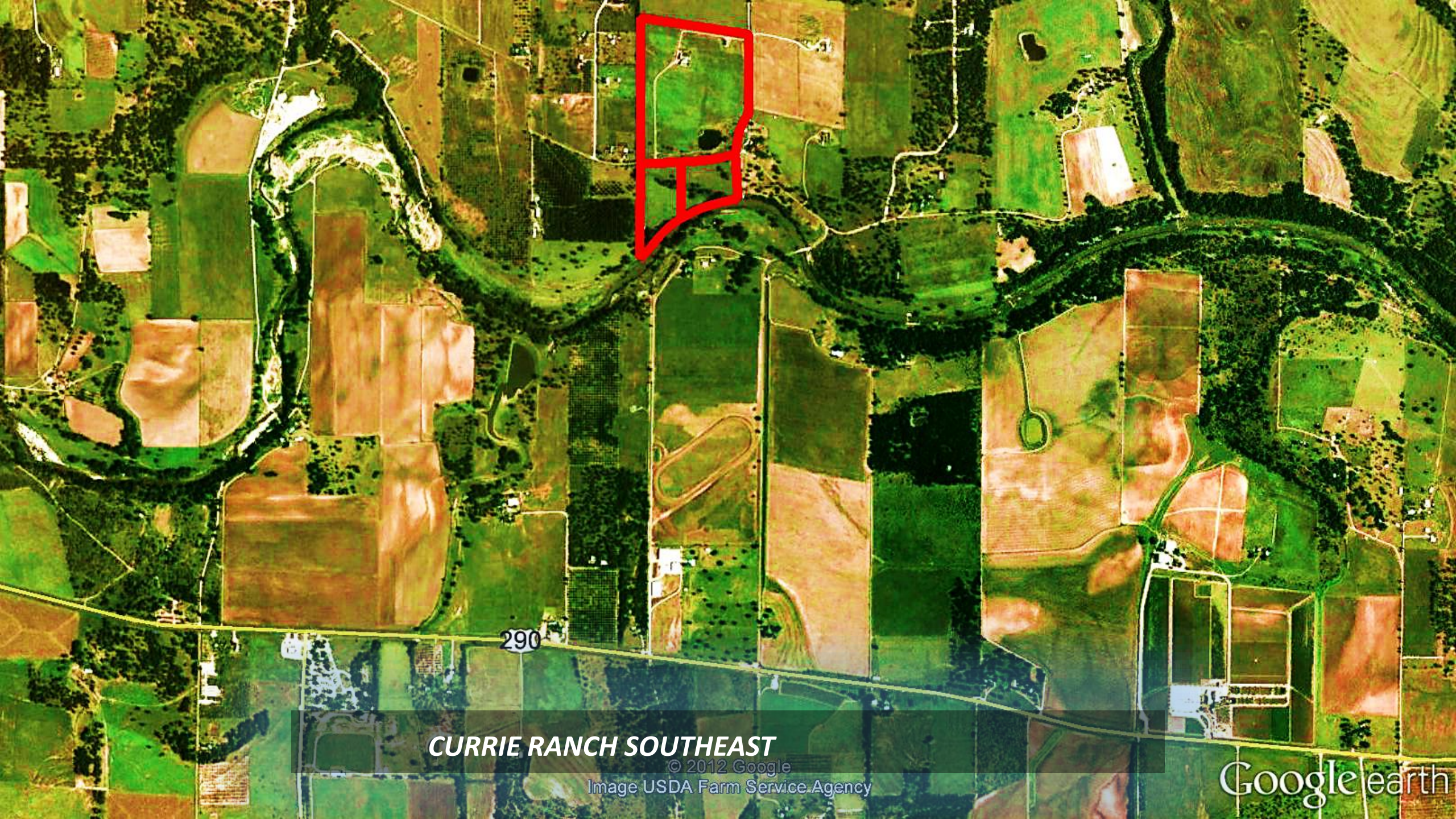
© 2012 Google

Image USDA Farm Service Agency

Google earth

***Currie Ranch Southwest
11.34 EST acres
787' EST river frontage
520' EST road frontage***



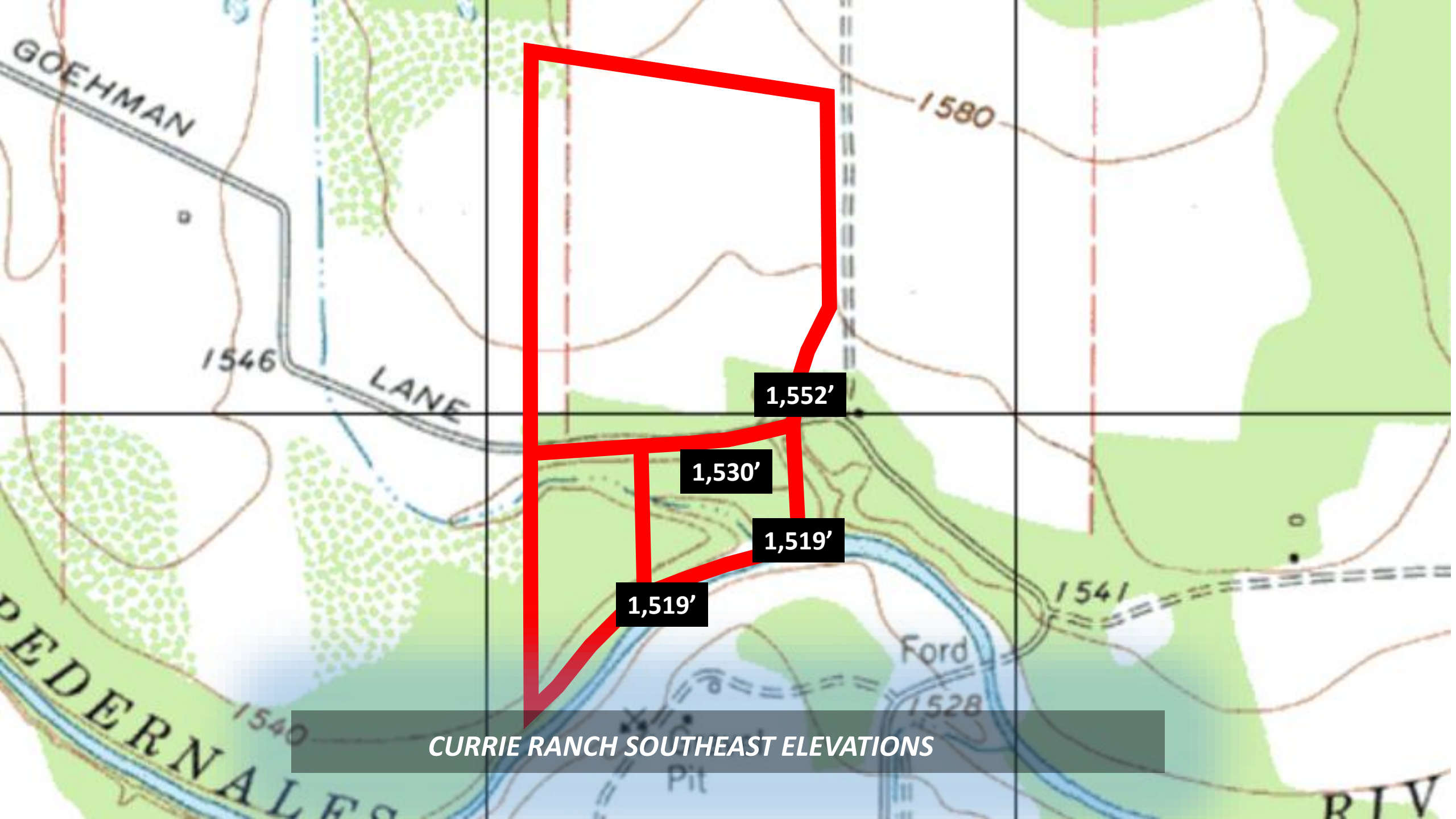


290

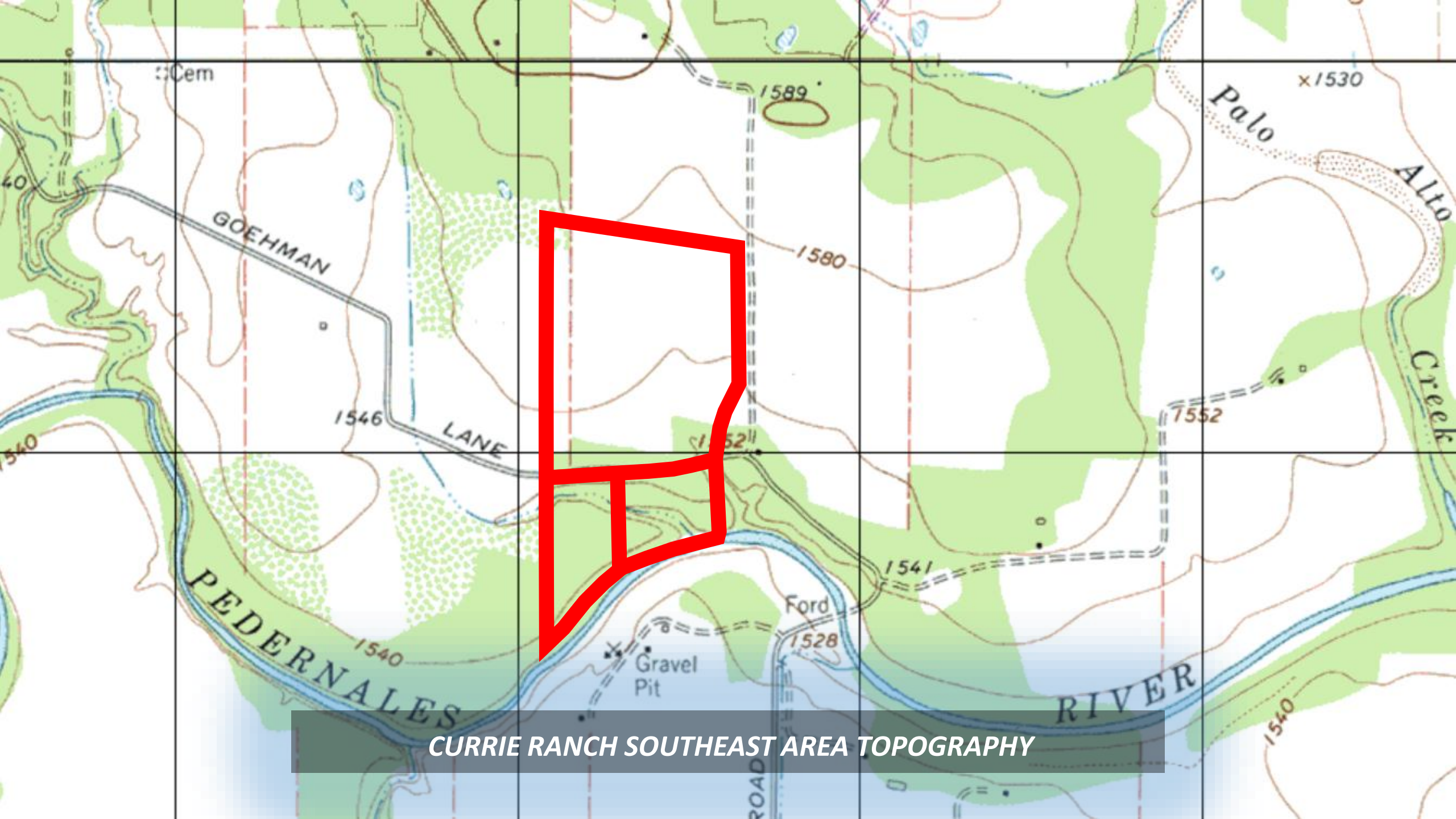
CURRIE RANCH SOUTHEAST

© 2012 Google
Image USDA Farm Service Agency

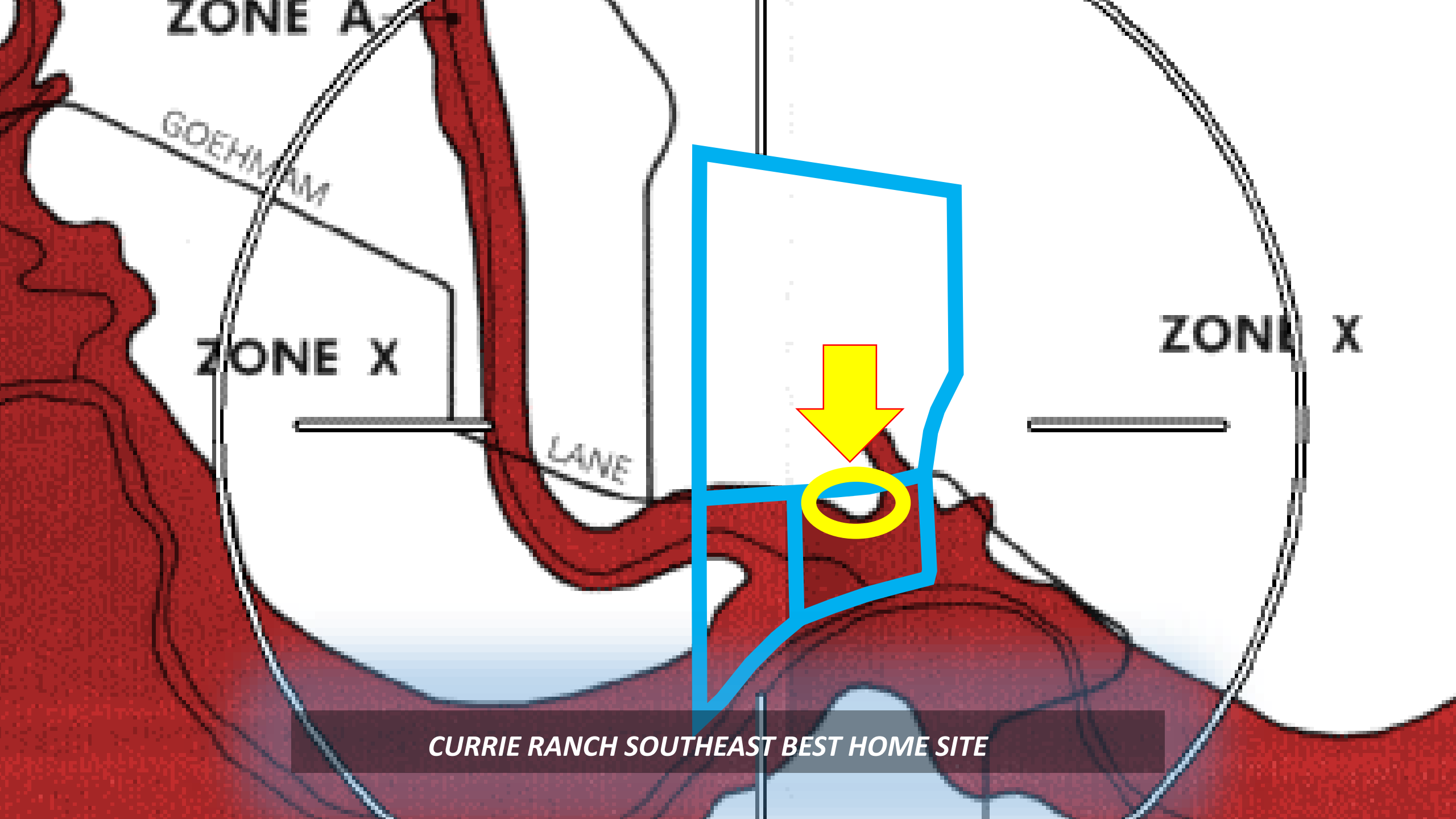
Google earth



CURRIE RANCH SOUTHEAST ELEVATIONS



CURRIE RANCH SOUTHEAST AREA TOPOGRAPHY



ZONE A

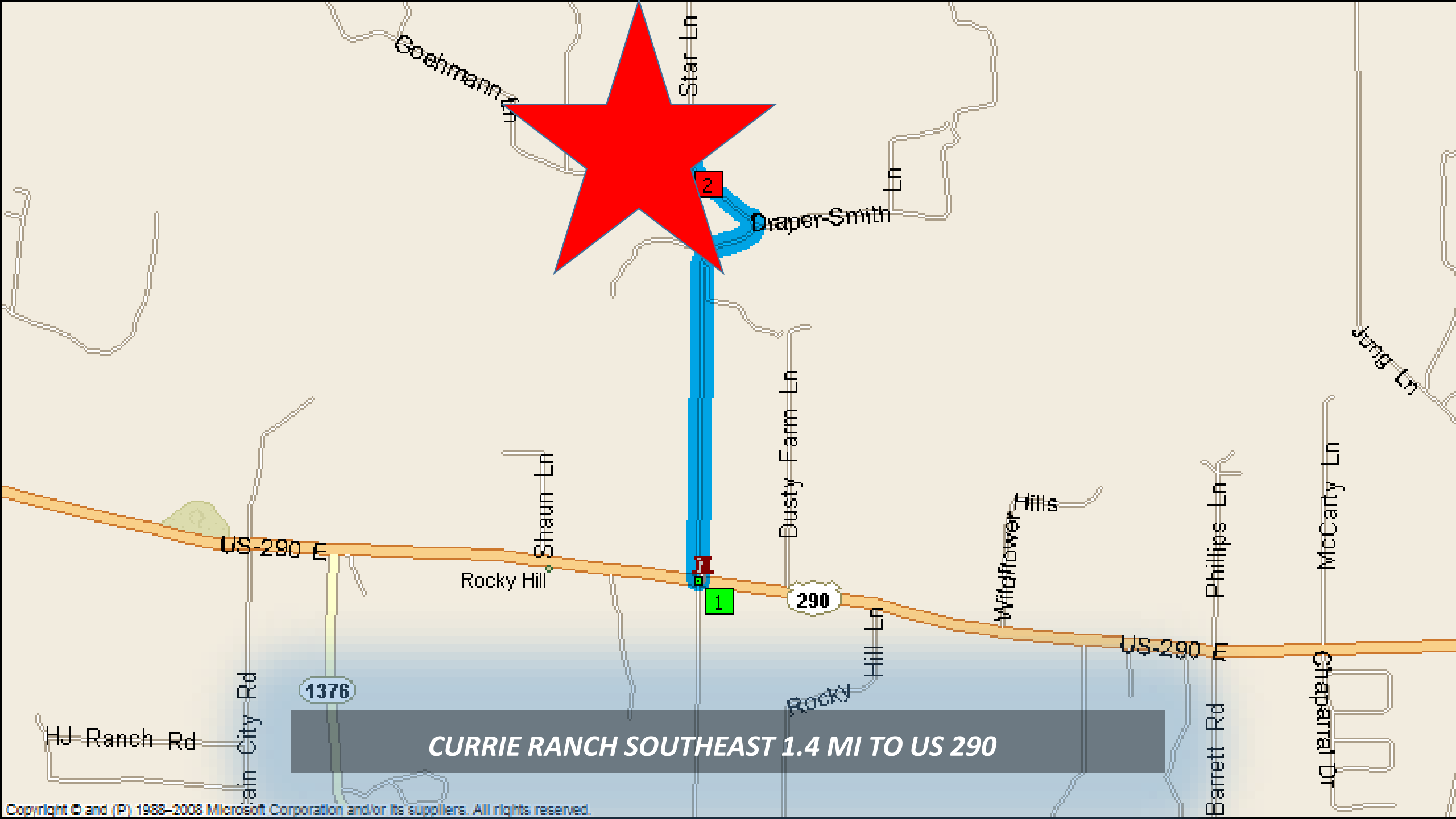
GOEHMAN

ZONE X

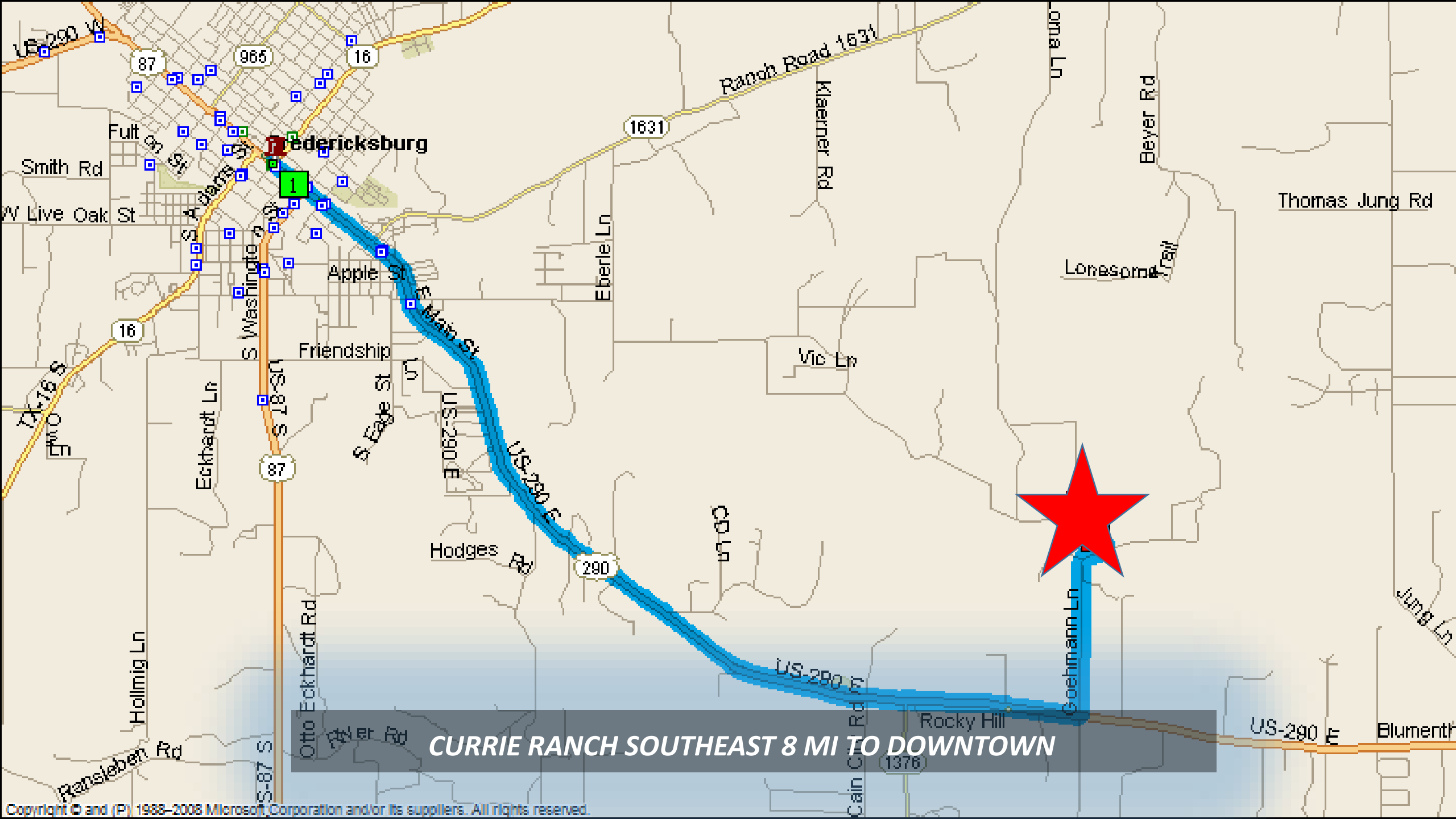
LAVE

ZONE X

CURRIE RANCH SOUTHEAST BEST HOME SITE



CURRIE RANCH SOUTHEAST 1.4 MI TO US 290

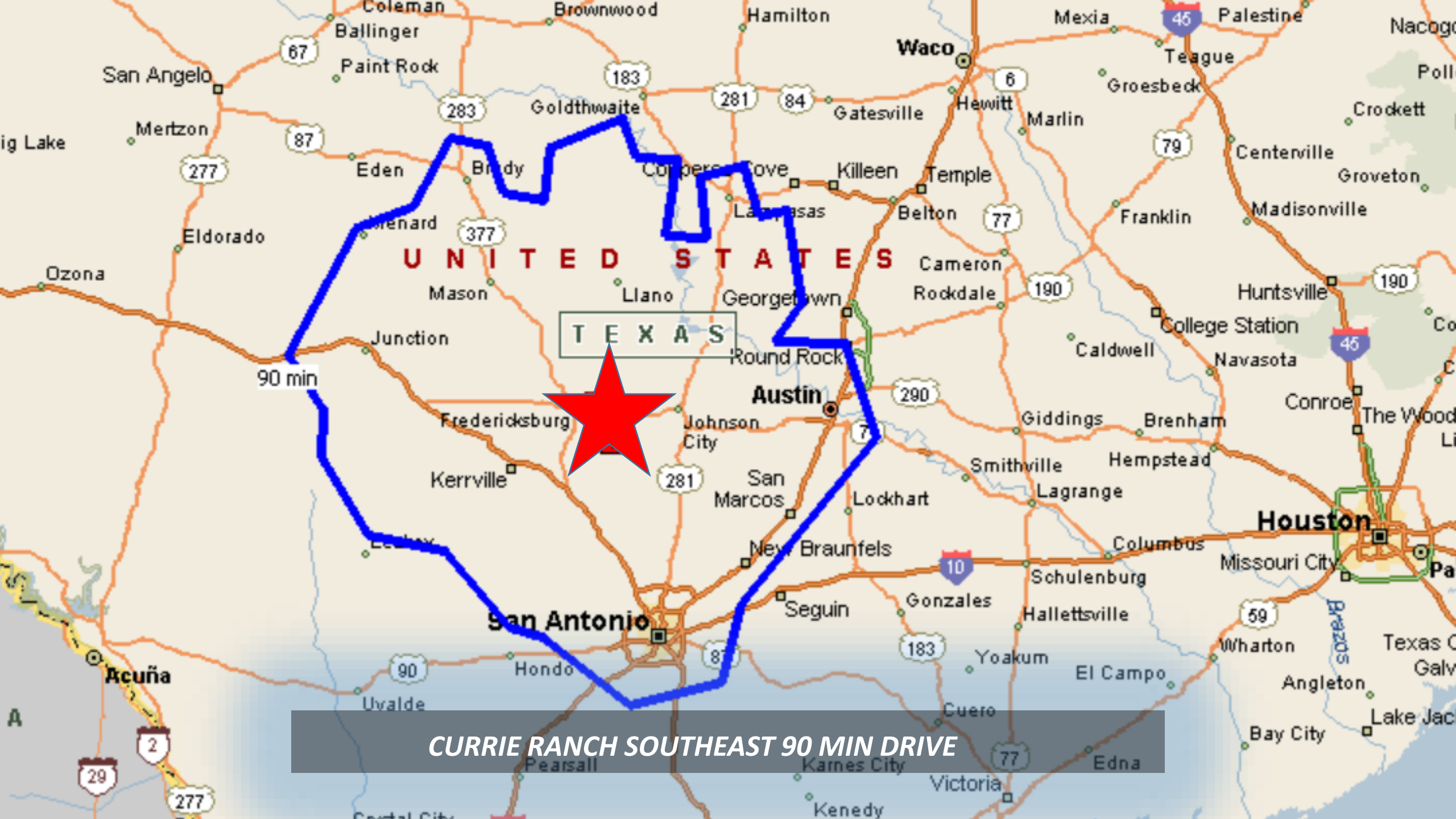




CURRIE RANCH SOUTHEAST 25 MI TO JOHNSON CITY







CURRIE RANCH SOUTHEAST 90 MIN DRIVE