

Currie Ranch Southeast
9.88 EST acres
790' EST river frontage
700' EST road frontage

Pedernales

Goehmann Ln

Lone Star Ln

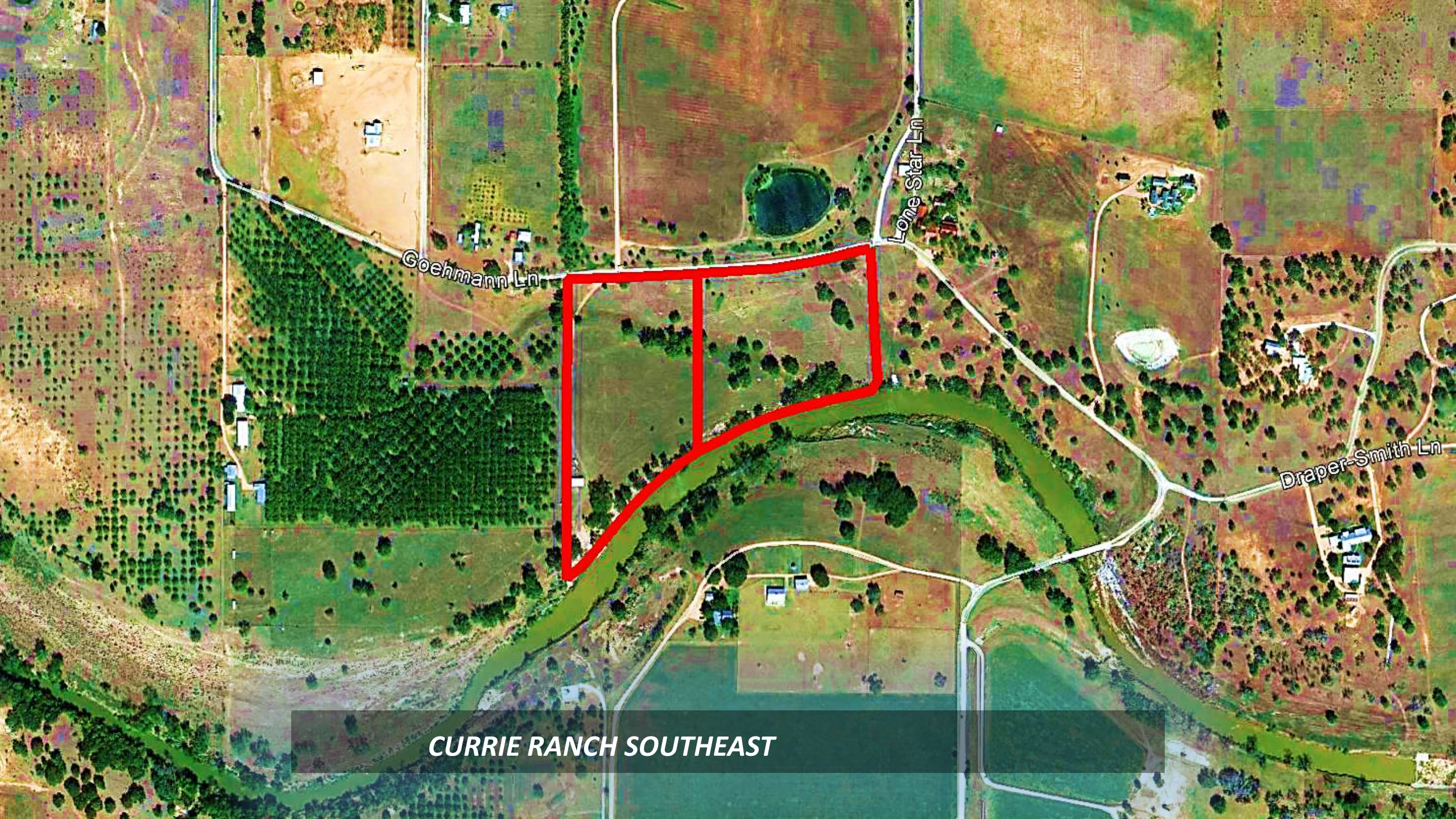
Draper-Smith Ln

CURRIE RANCH SOUTHEAST

© 2012 Google

Image USDA Farm Service Agency

Google earth



Goehmann Ln

Lone Star Ln

Draper-Smith Ln

CURRIE RANCH SOUTHEAST

***Currie Ranch 5 offerings
9.88 to 73.43 acres
Up to 1,577' river frontage
Multiple home sites***

CURRIE RANCH SOUTHEAST

© 2012 Google

Image USDA Farm Service Agency

Google earth

Currie Ranch South
21.22 EST acres
1,577' EST river frontage
1,220' EST road frontage

Pedernales

Goehmann Ln

Lone Star Ln

Draper-Smith Ln

CURRIE RANCH S SOUTHEAST

© 2012 Google

Image USDA Farm Service Agency

Google earth

***Currie Ranch Southwest
11.34 EST acres
787' EST river frontage
520' EST road frontage***

Pedernales

Goehmann Ln

Lone Star Ln

Draper-Smith Ln

CURRIE RANCH SOUTHEAST

© 2012 Google

Image USDA Farm Service Agency

Google earth

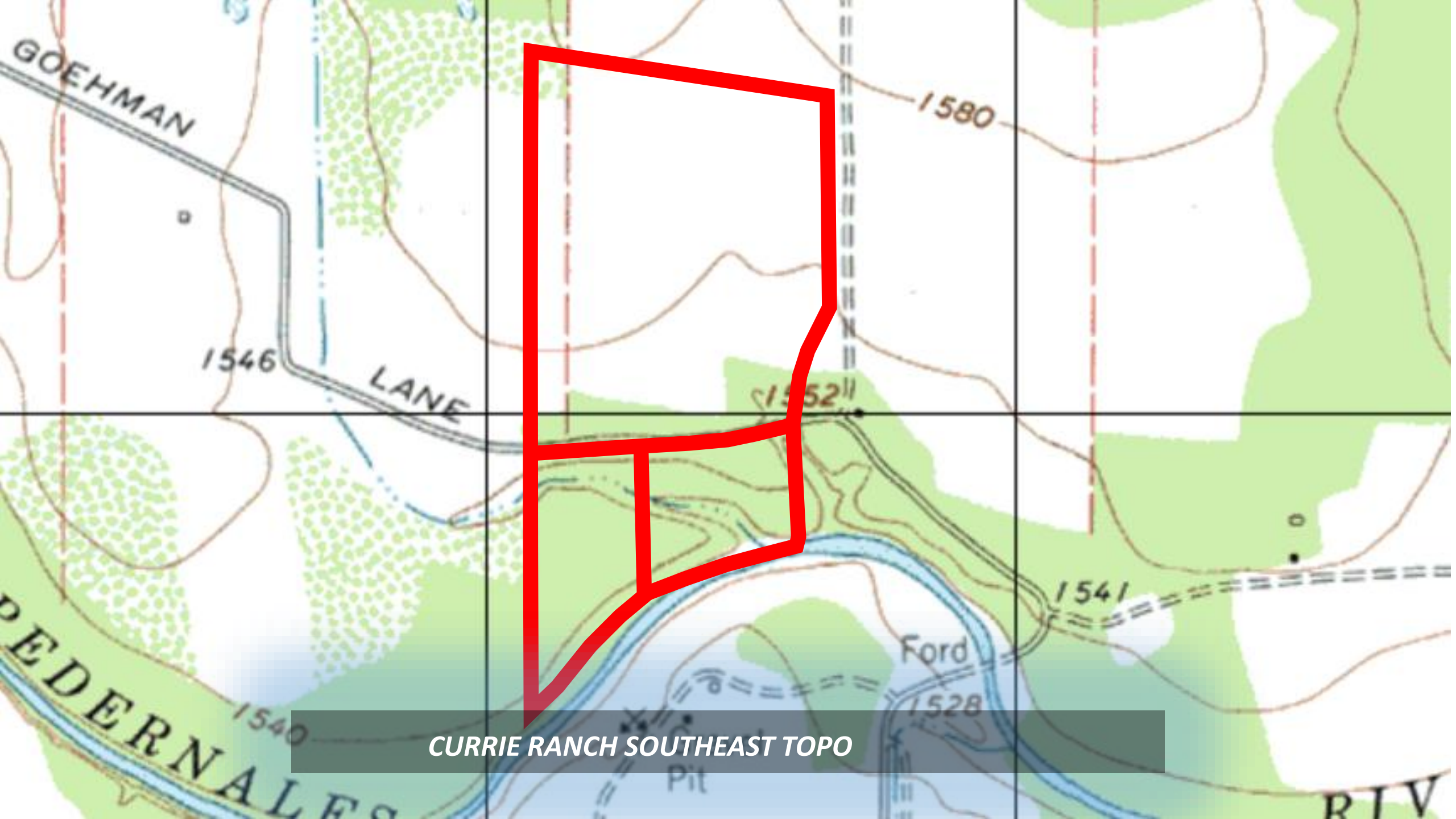


290

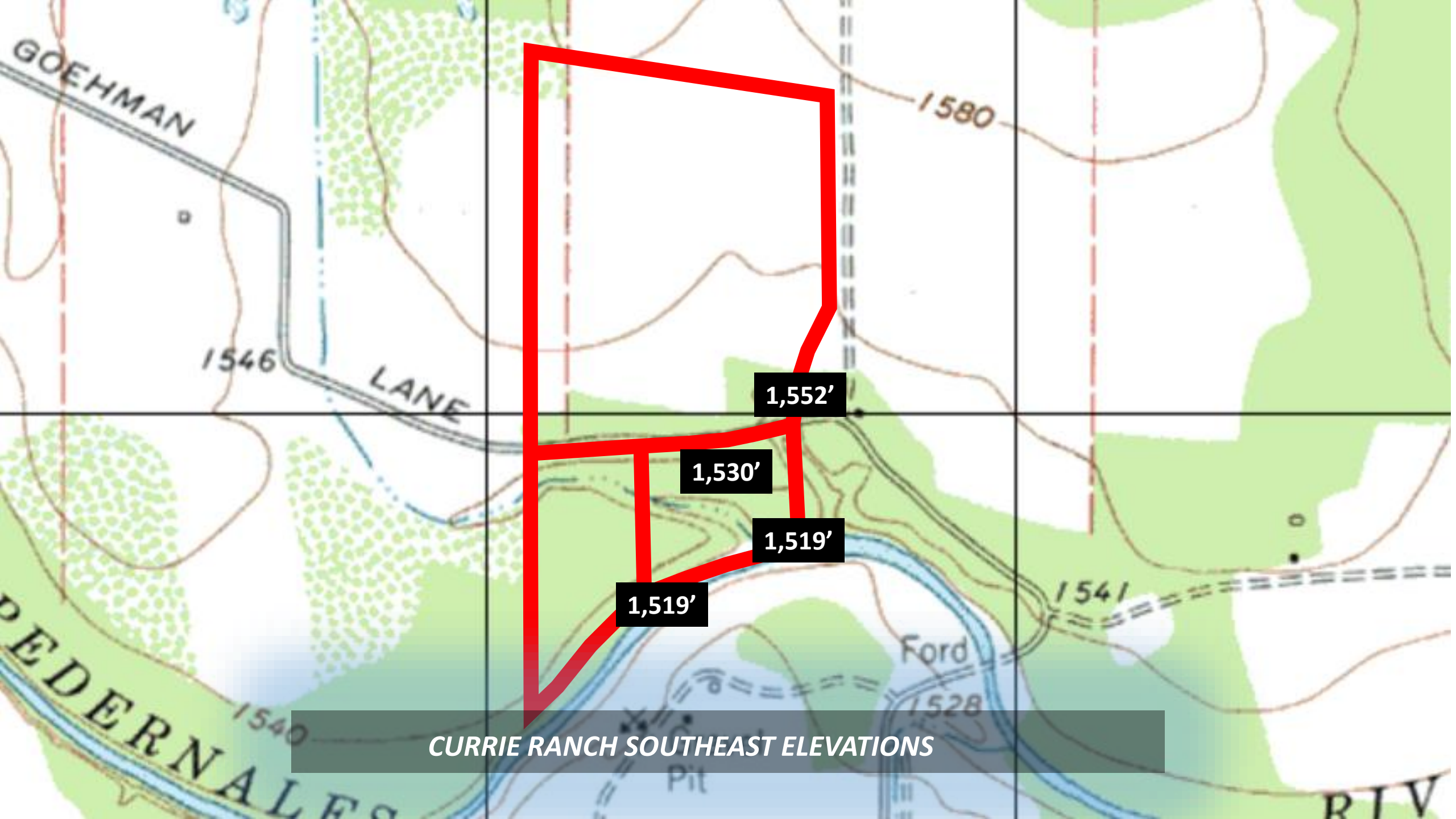
CURRIE RANCH SOUTHEAST

© 2012 Google
Image USDA Farm Service Agency

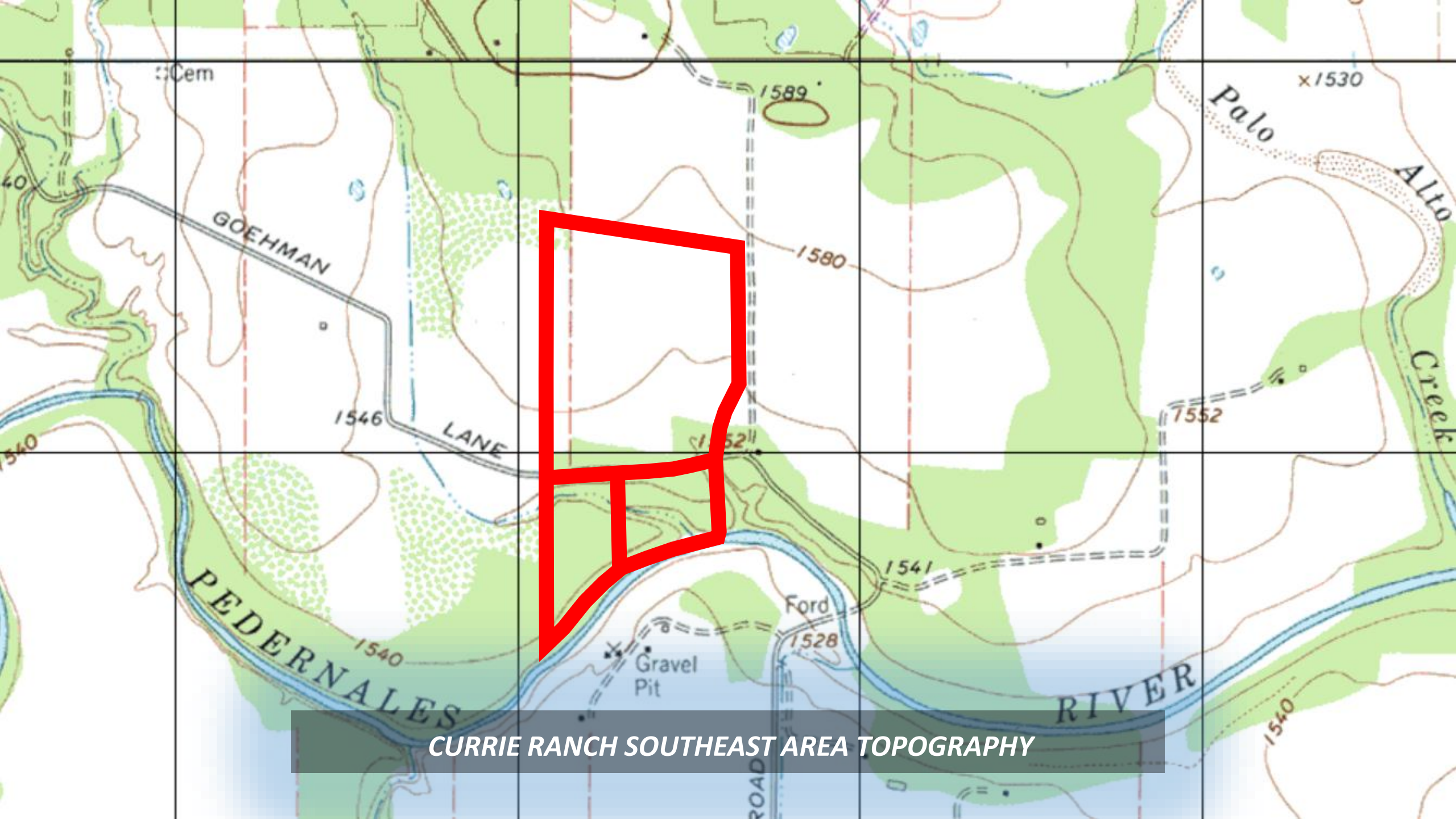
Google earth



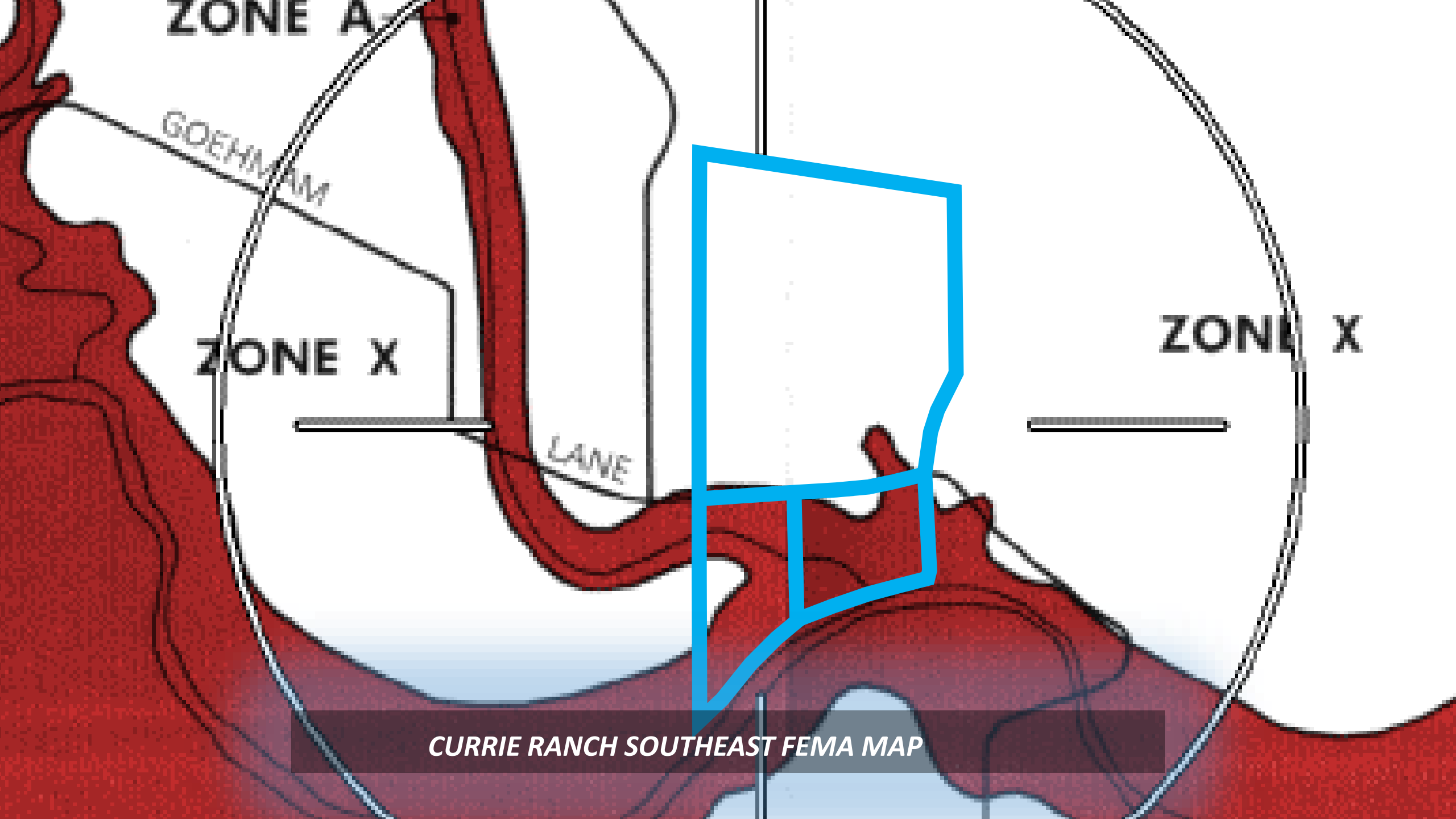
CURRIE RANCH SOUTHEAST TOPO



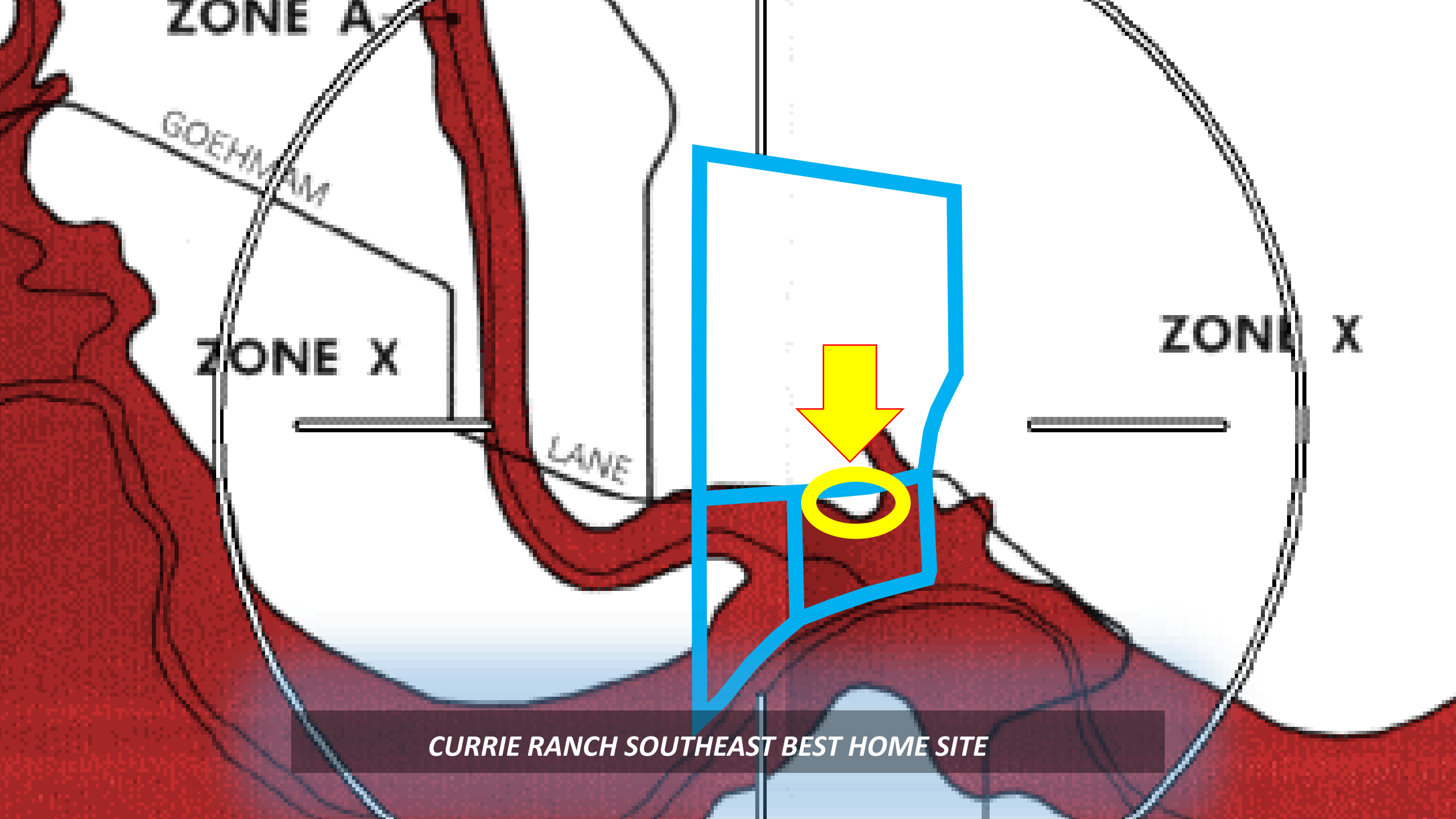
CURRIE RANCH SOUTHEAST ELEVATIONS



CURRIE RANCH SOUTHEAST AREA TOPOGRAPHY



CURRIE RANCH SOUTHEAST FEMA MAP



ZONE A

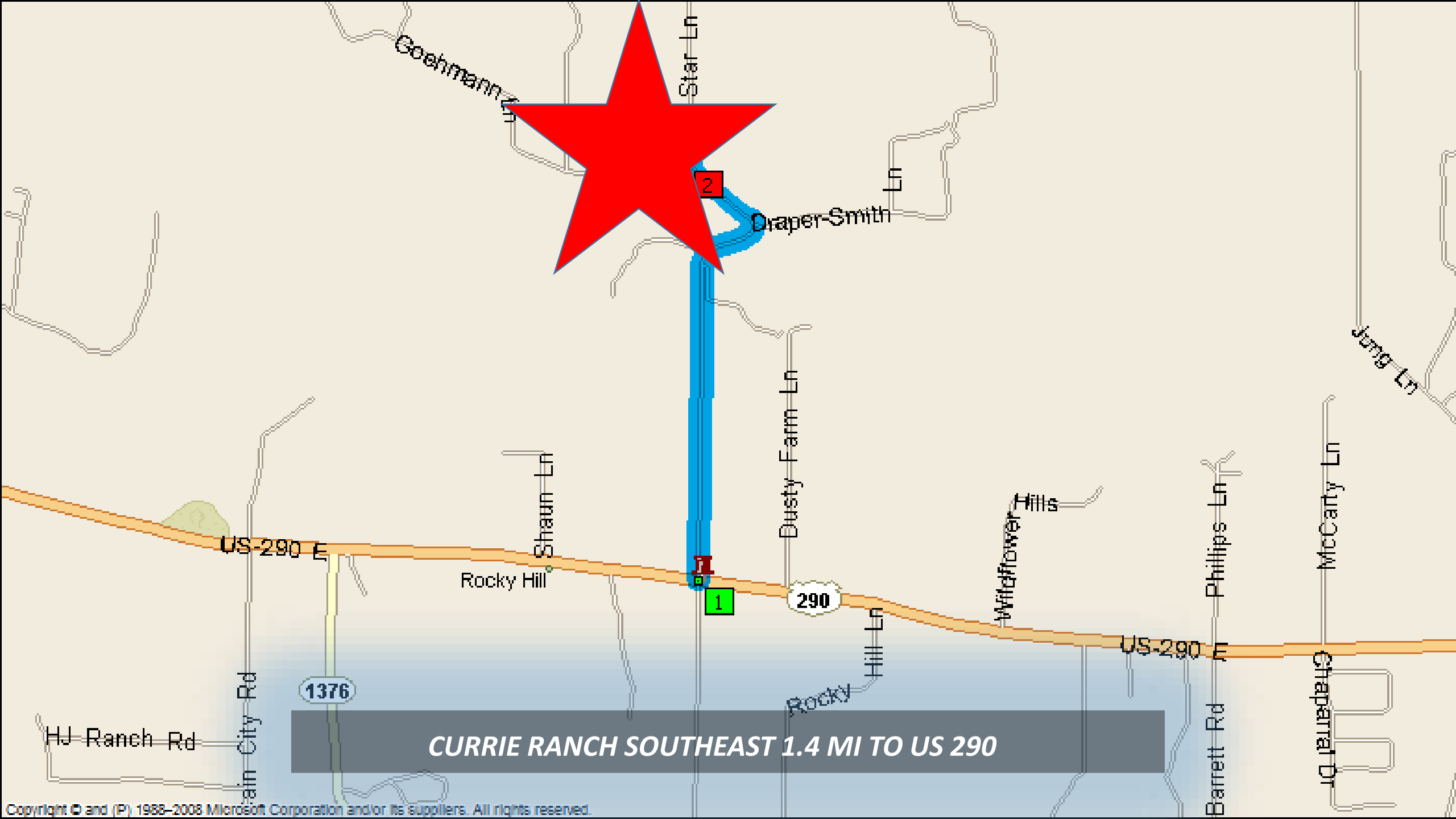
GOEHMAN

ZONE X

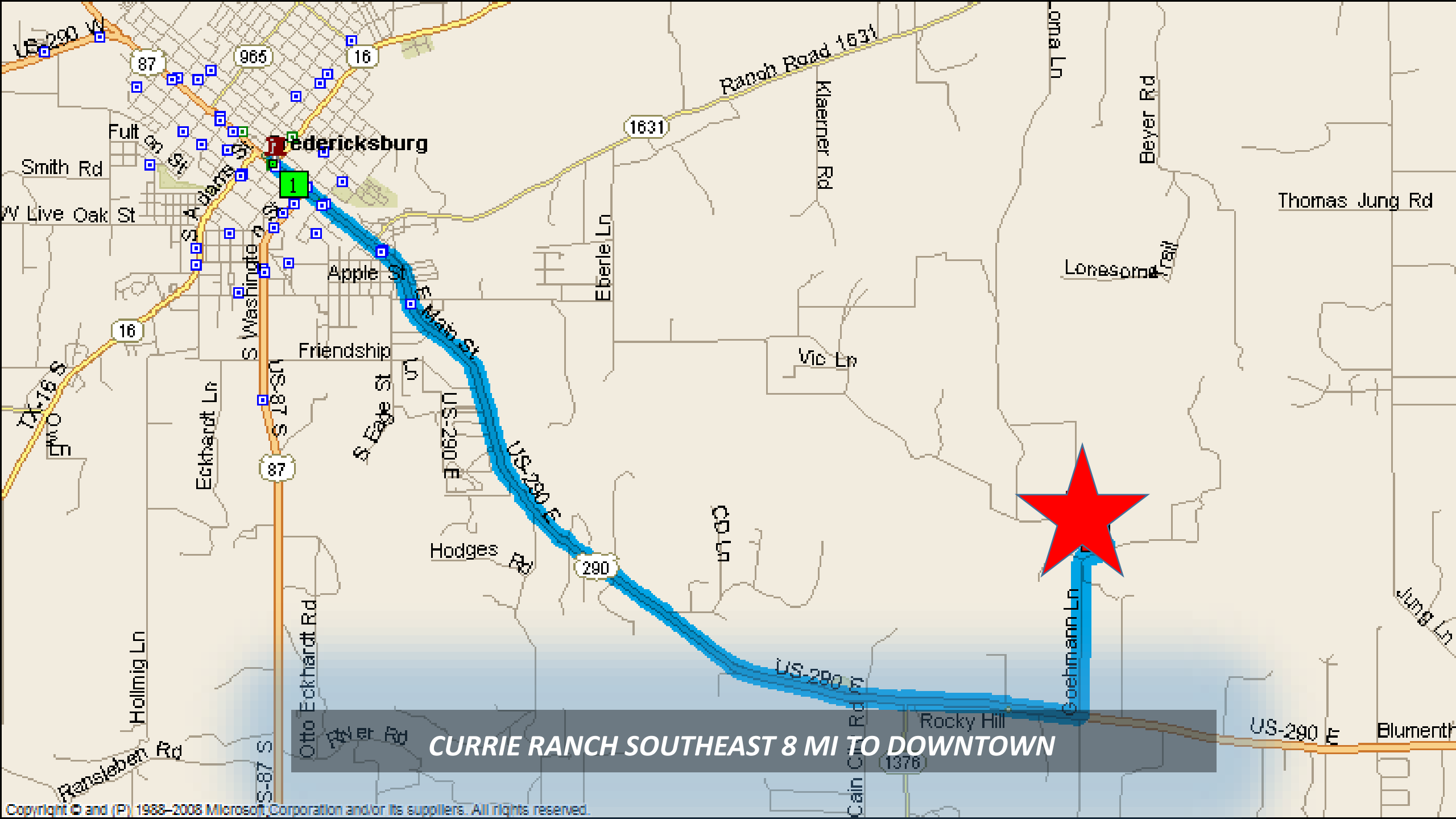
LAKE

ZONE X

CURRIE RANCH SOUTHEAST BEST HOME SITE



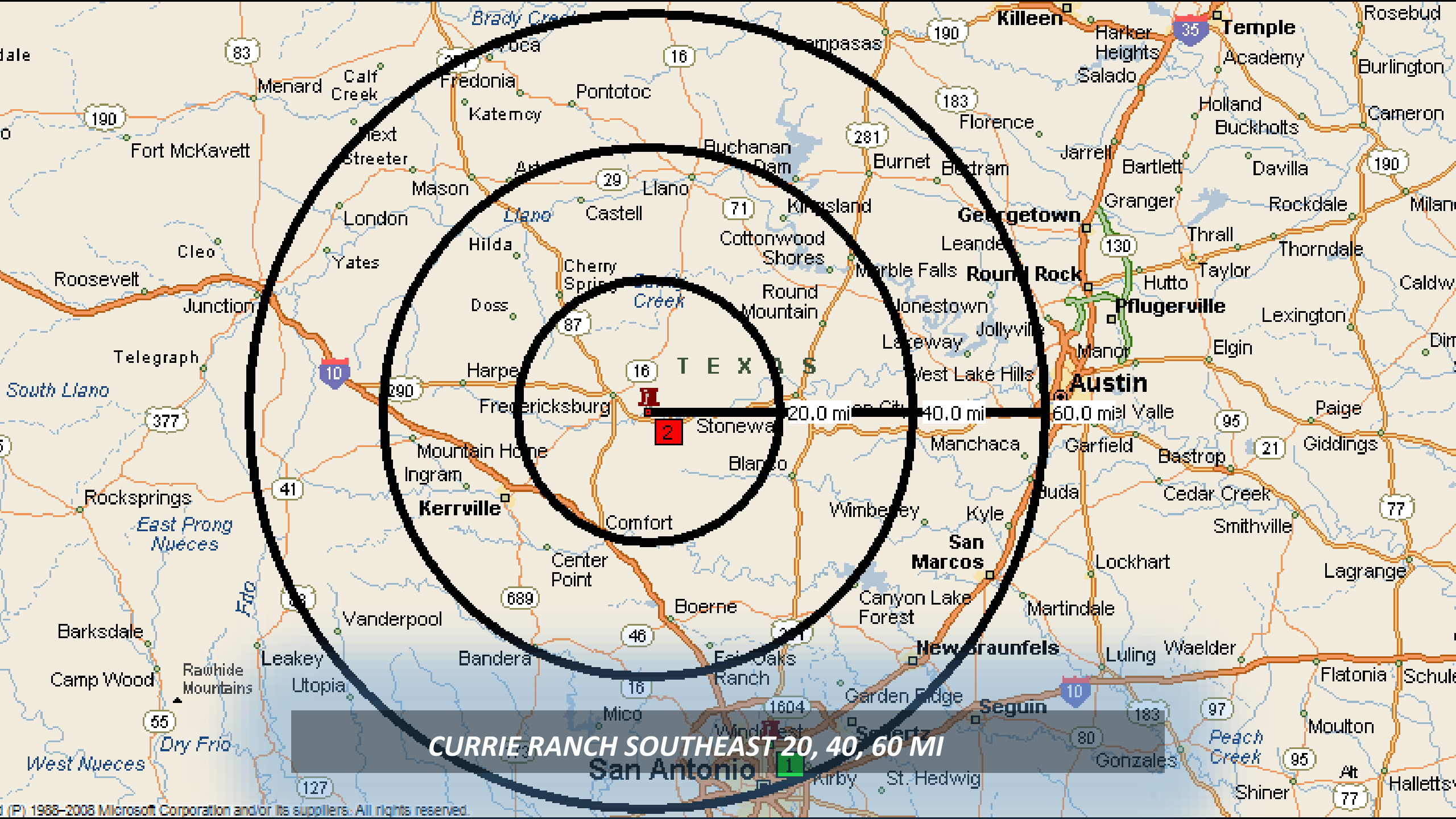
CURRIE RANCH SOUTHEAST 1.4 MI TO US 290



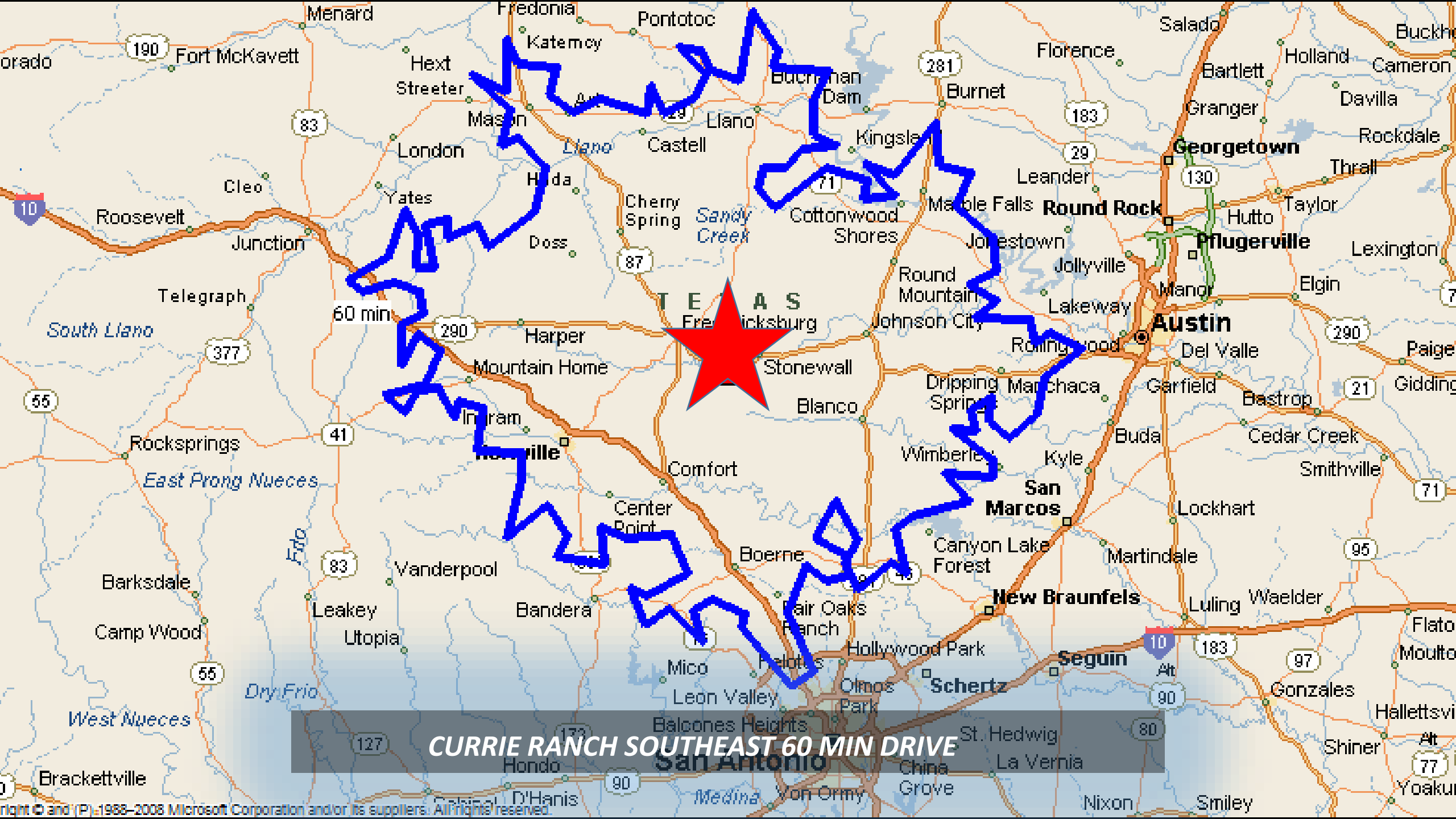
CURRIE RANCH SOUTHEAST 8 MI TO DOWNTOWN



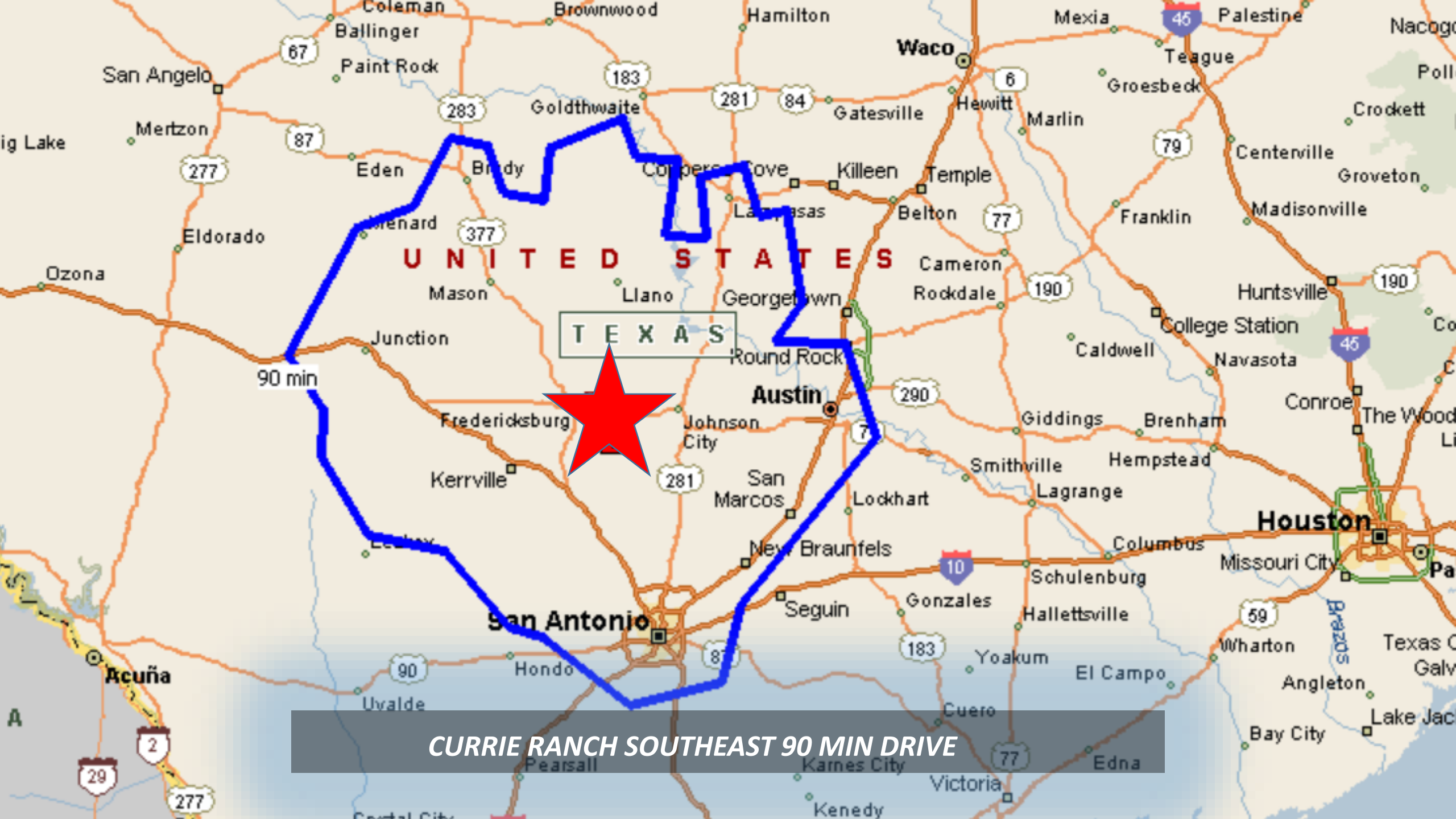
CURRIE RANCH SOUTHEAST 25 MI TO JOHNSON CITY



CURRIE RANCH SOUTHEAST 20, 40, 60 MI
San Antonio



CURRIE RANCH SOUTHEAST 60 MIN DRIVE



CURRIE RANCH SOUTHEAST 90 MIN DRIVE



CURRIE RANCH SOUTHEAST TEXAS MAP