

Currie Ranch Southeast
9.88 EST acres
790' EST river frontage
700' EST road frontage

Pedernales

Goehmann Ln

Lone Star Ln

Draper-Smith Ln

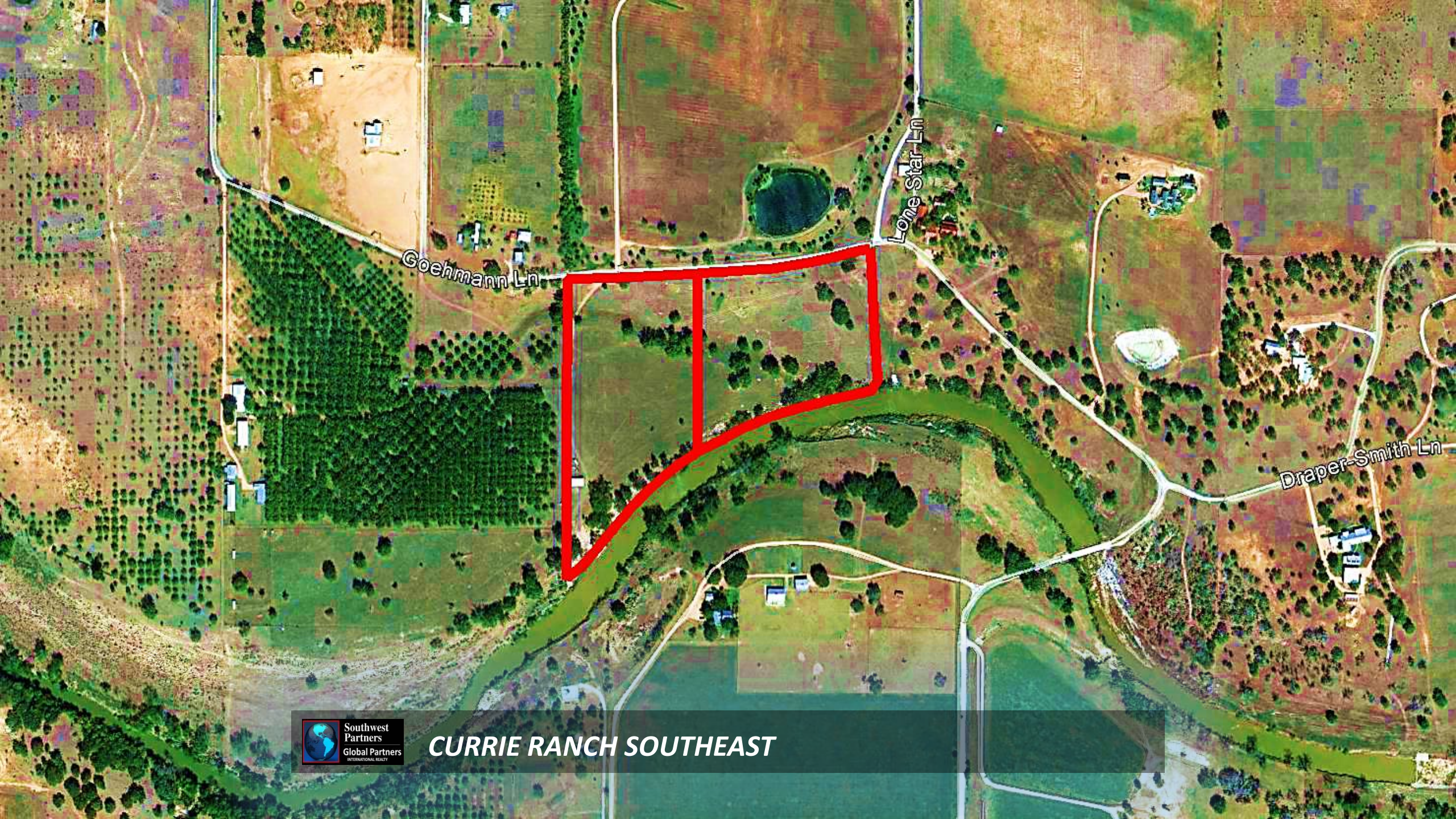


CURRIE RANCH SOUTHEAST

© 2012 Google

Image USDA Farm Service Agency

Google earth



CURRIE RANCH SOUTHEAST

***Currie Ranch 5 offerings
9.88 to 73.43 acres
Up to 1,577' river frontage
Multiple home sites***



CURRIE RANCH SOUTHEAST

© 2012 Google

Image USDA Farm Service Agency

Google earth

Currie Ranch South
21.22 EST acres
1,577' EST river frontage
1,220' EST road frontage

Pedernales

Goehmann Ln

Lone Star Ln

Draper-Smith Ln



CURRIE RANCH S SOUTHEAST

© 2012 Google

Image USDA Farm Service Agency

Google earth

Currie Ranch Southwest
11.34 EST acres
787' EST river frontage
520' EST road frontage

Pedernales

Goehmann Ln

Lone Star Ln

Draper-Smith Ln

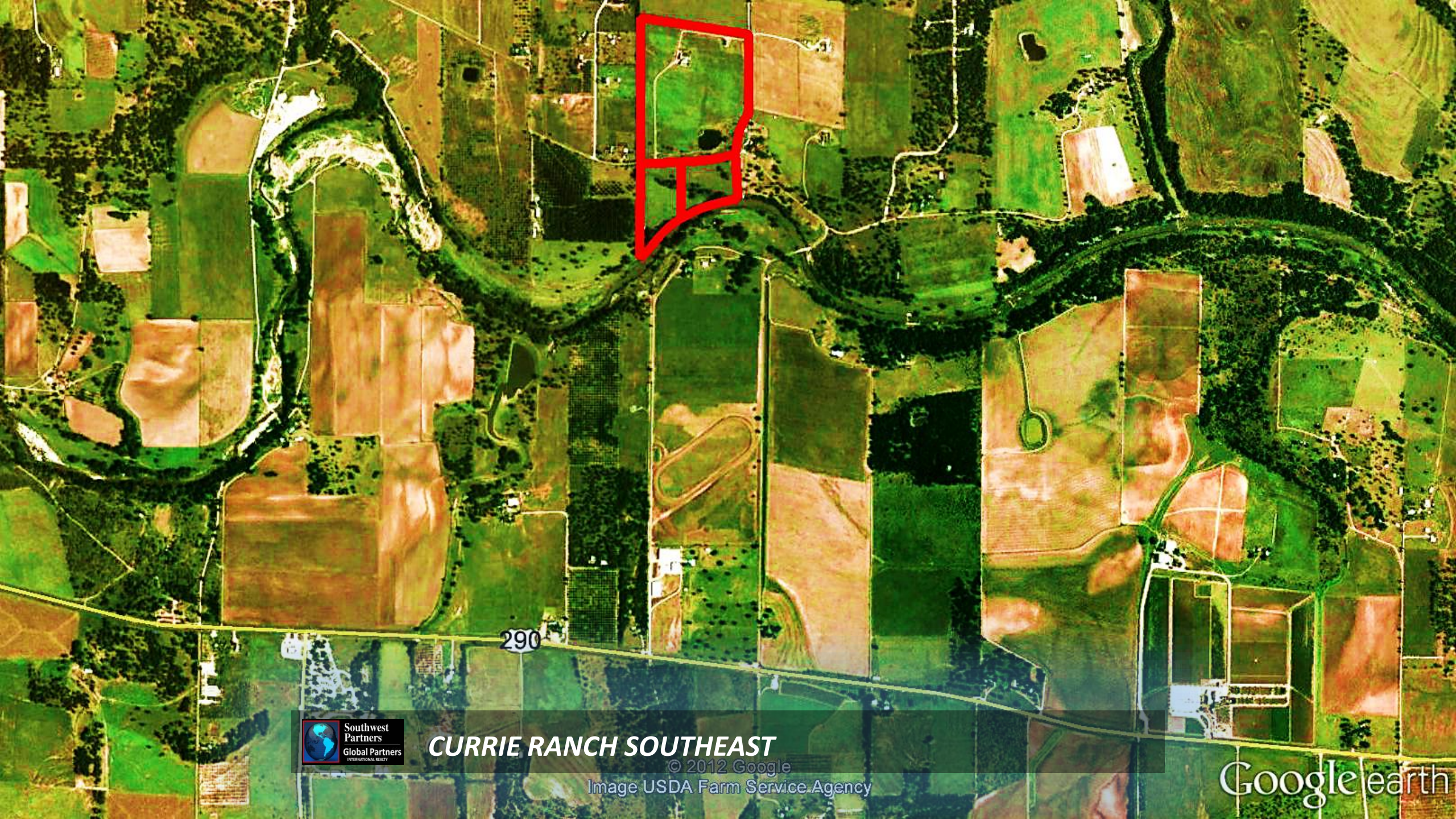


CURRIE RANCH SOUTHEAST

© 2012 Google

Image USDA Farm Service Agency

Google earth



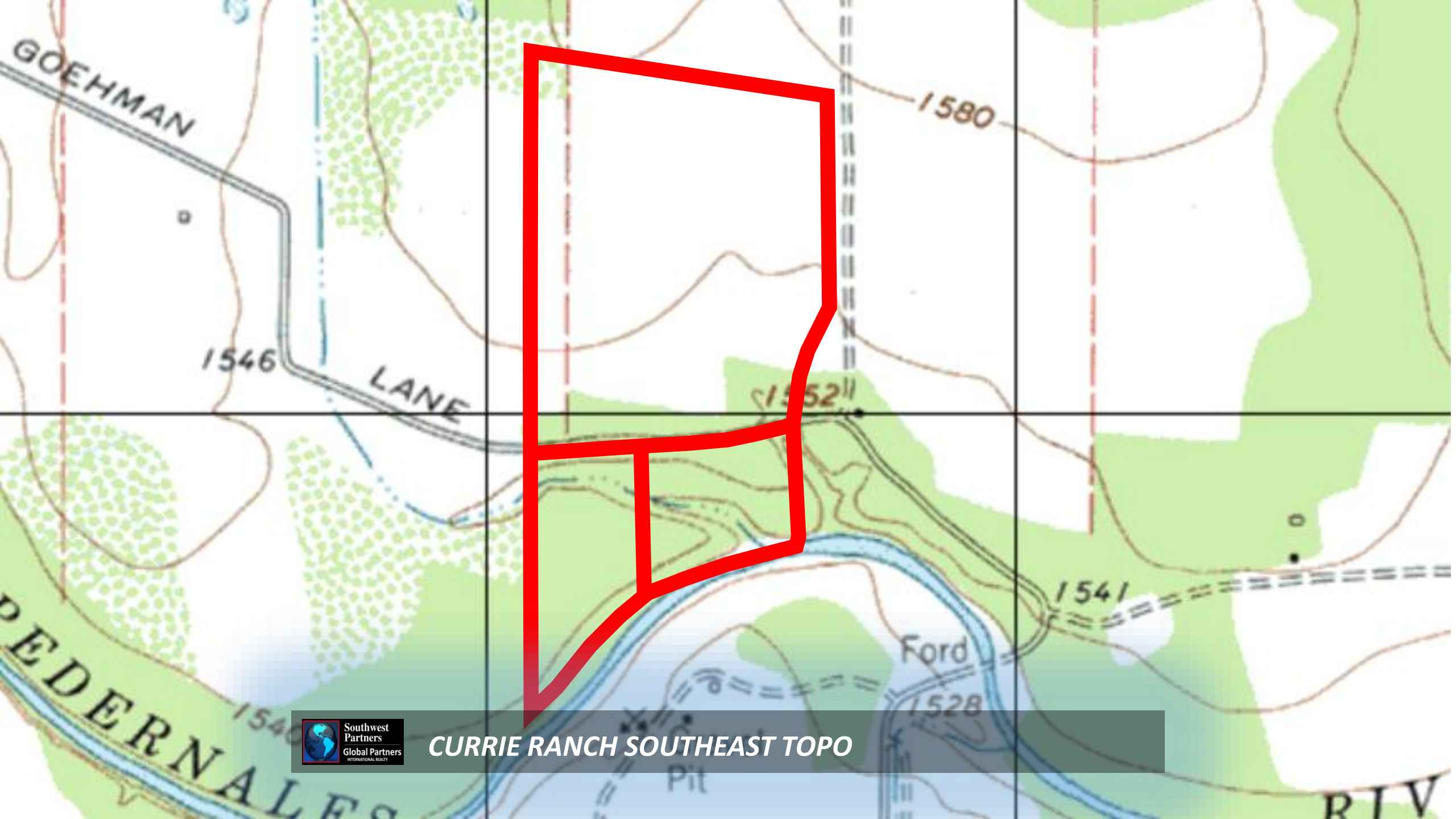
290



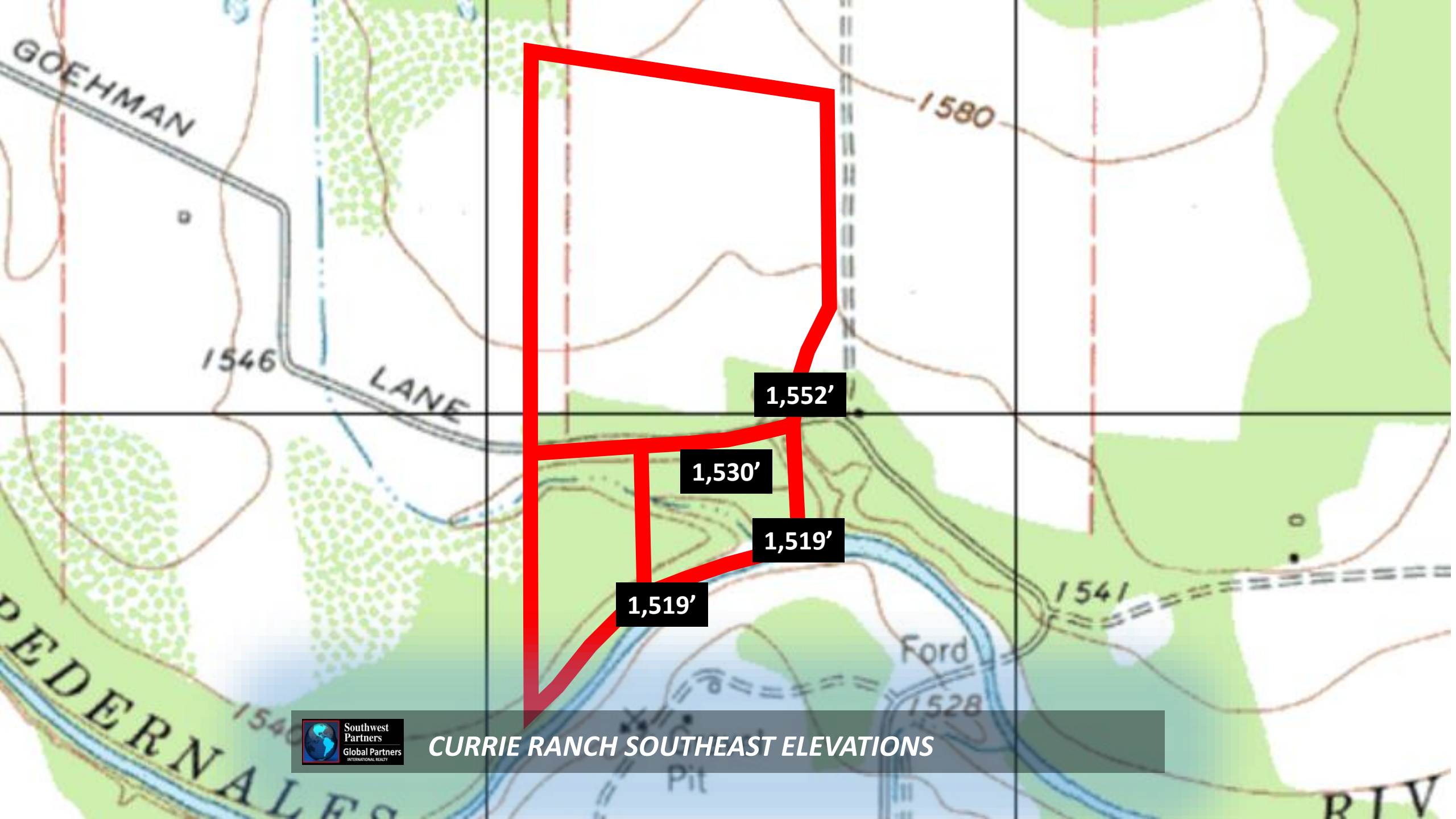
CURRIE RANCH SOUTHEAST

© 2012 Google
Image USDA Farm Service Agency

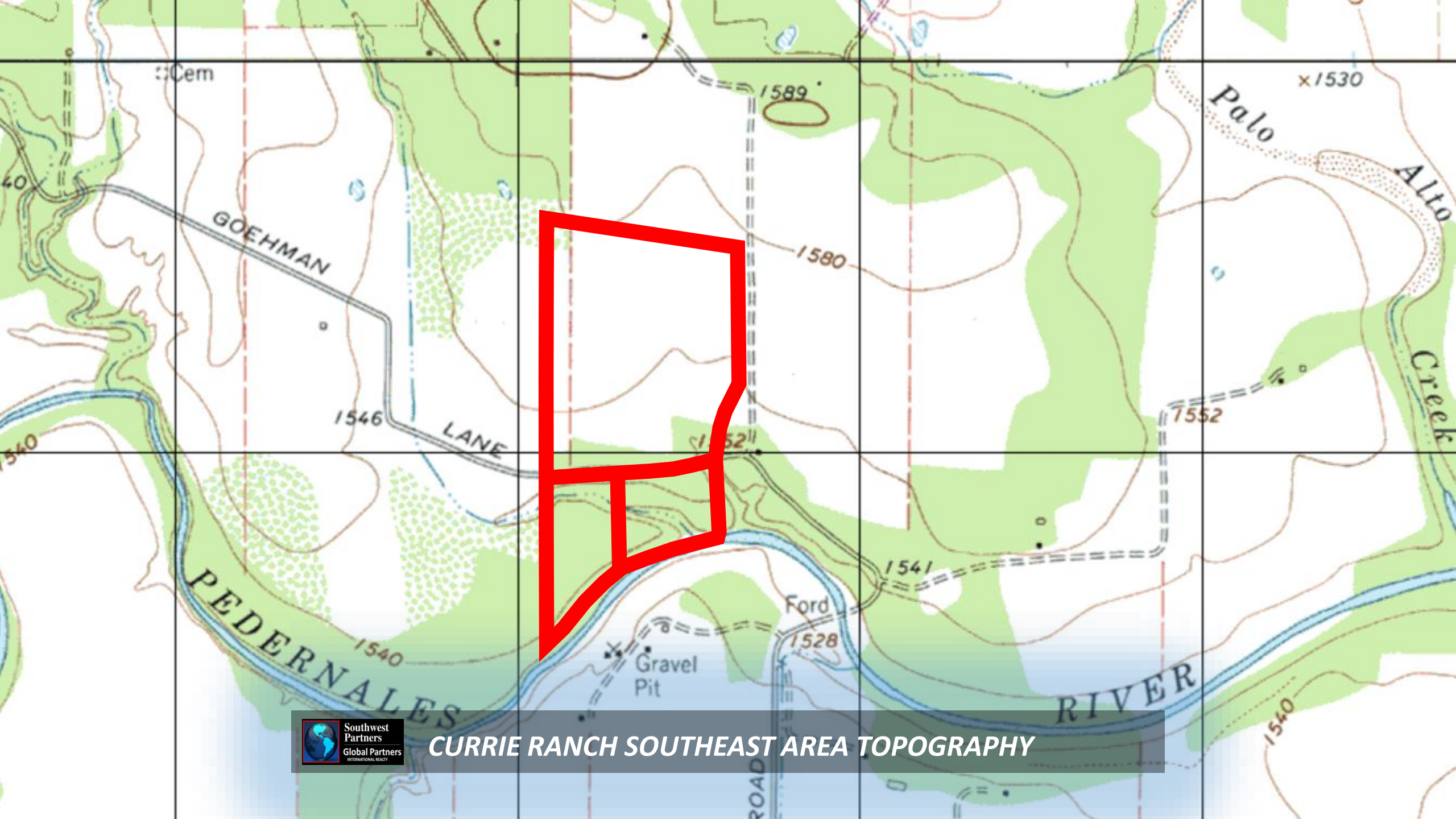
Google earth



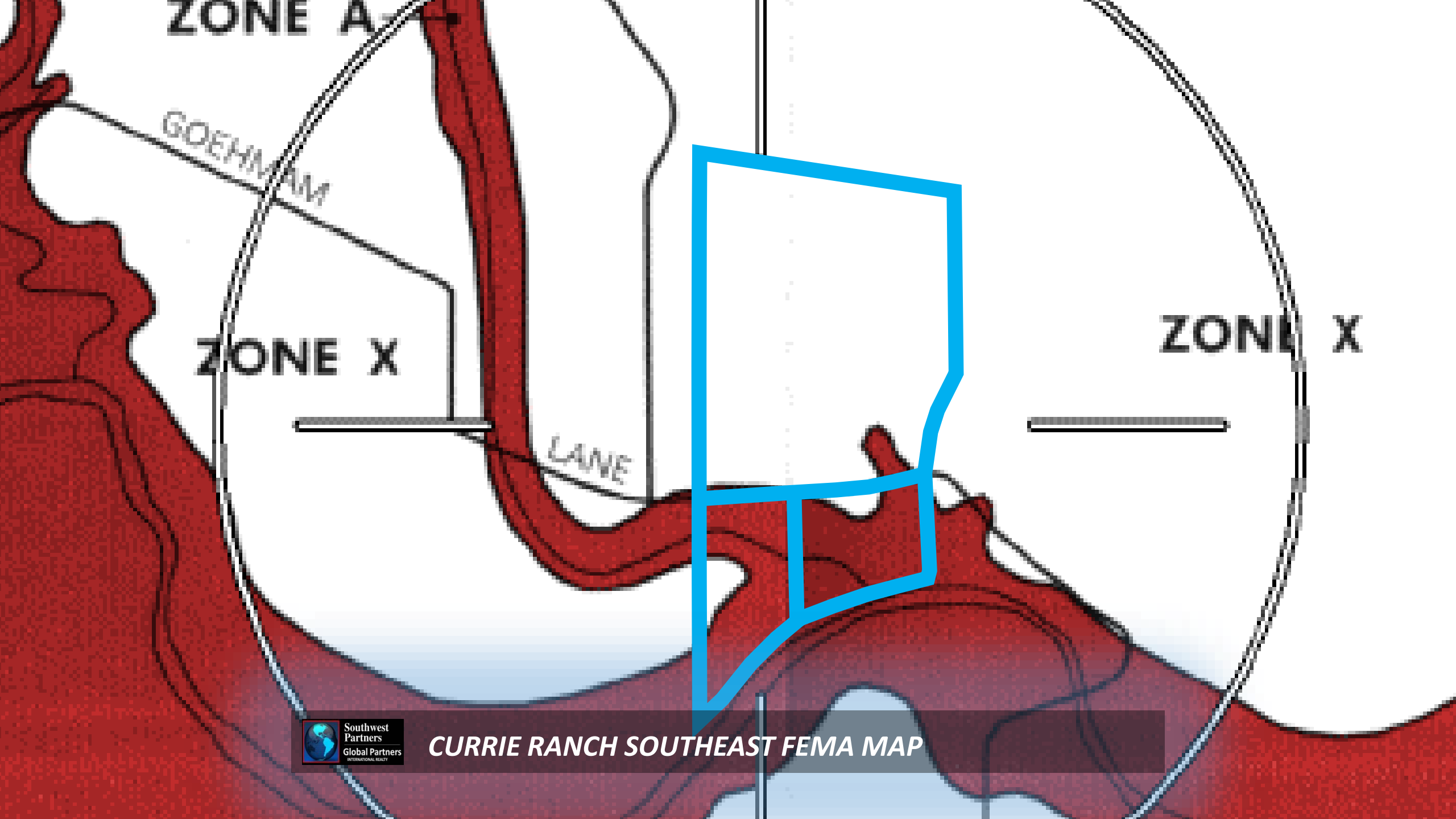
CURRIE RANCH SOUTHEAST TOPO

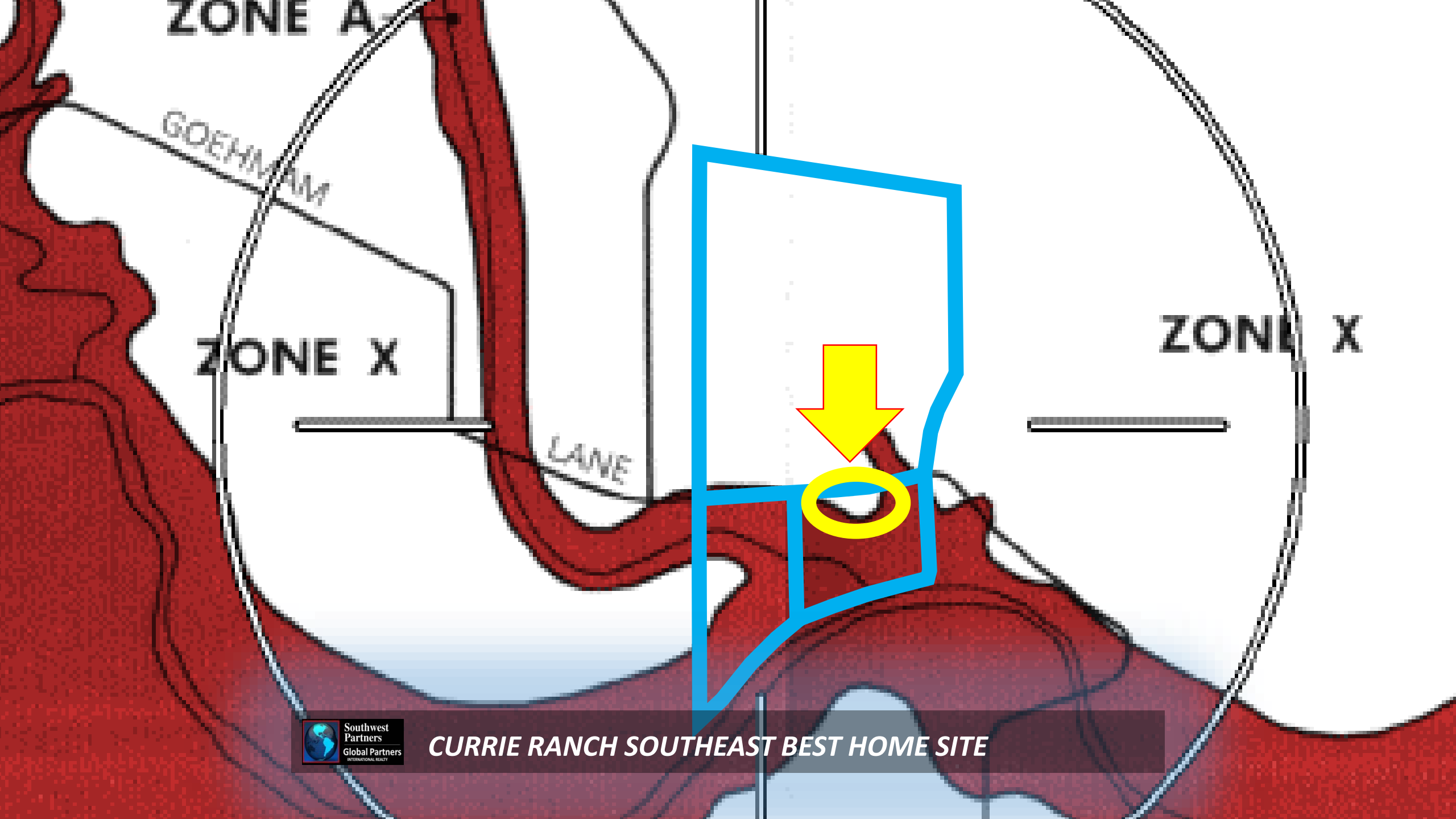


CURRIE RANCH SOUTHEAST ELEVATIONS



CURRIE RANCH SOUTHEAST AREA TOPOGRAPHY





ZONE A

GOEHMAN

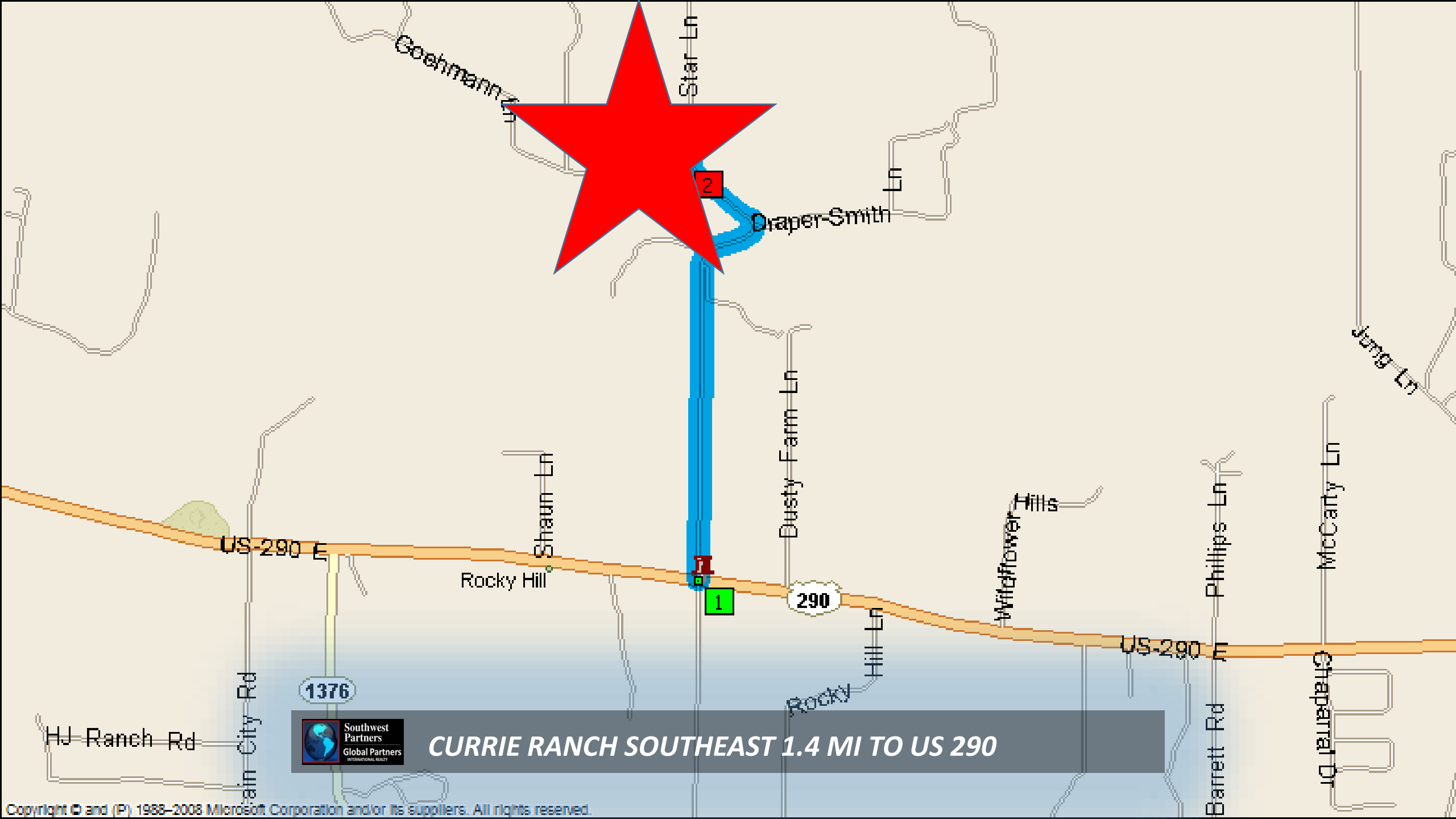
ZONE X

LAVE

ZONE X



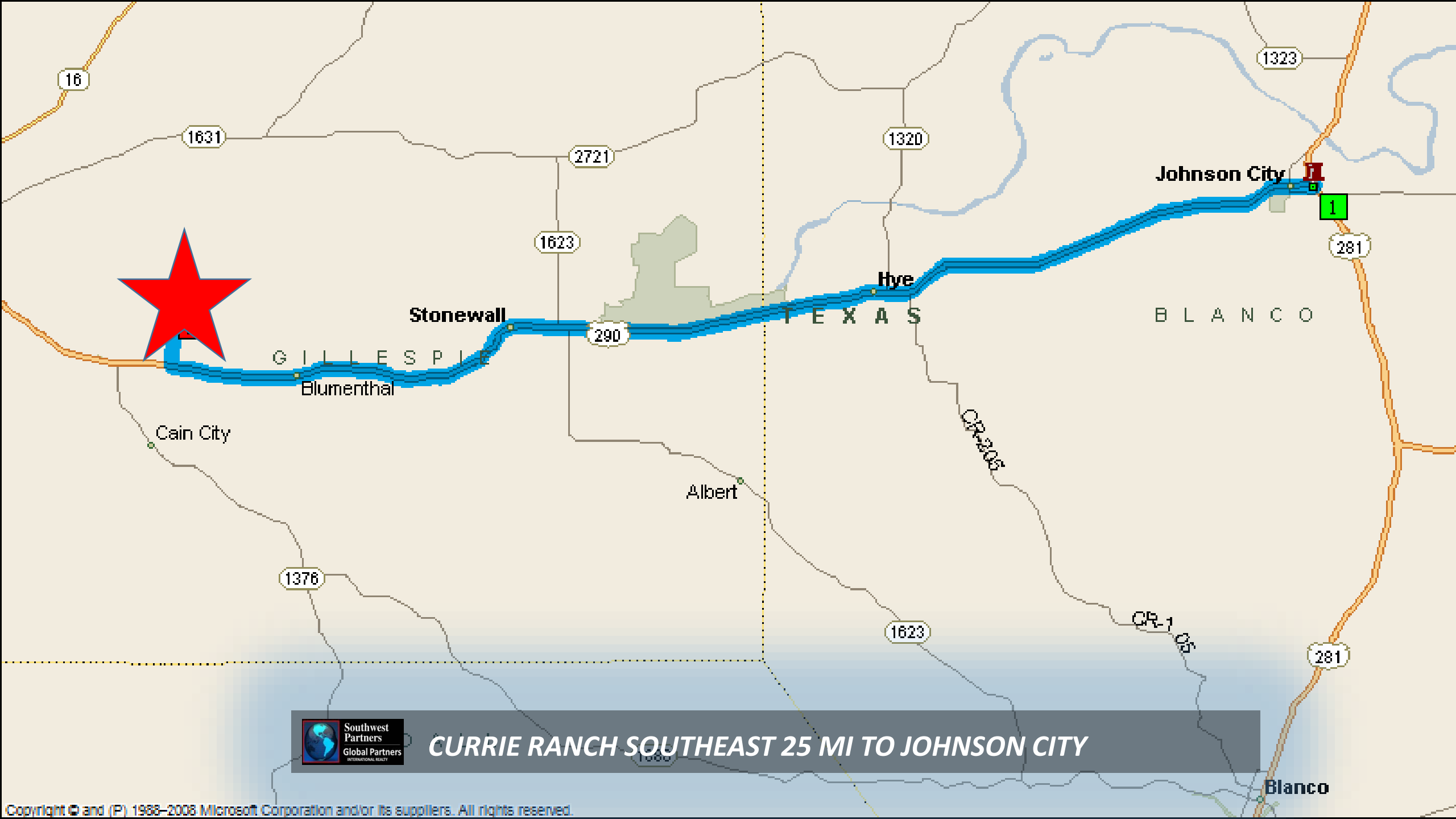
CURRIE RANCH SOUTHEAST BEST HOME SITE



CURRIE RANCH SOUTHEAST 1.4 MI TO US 290

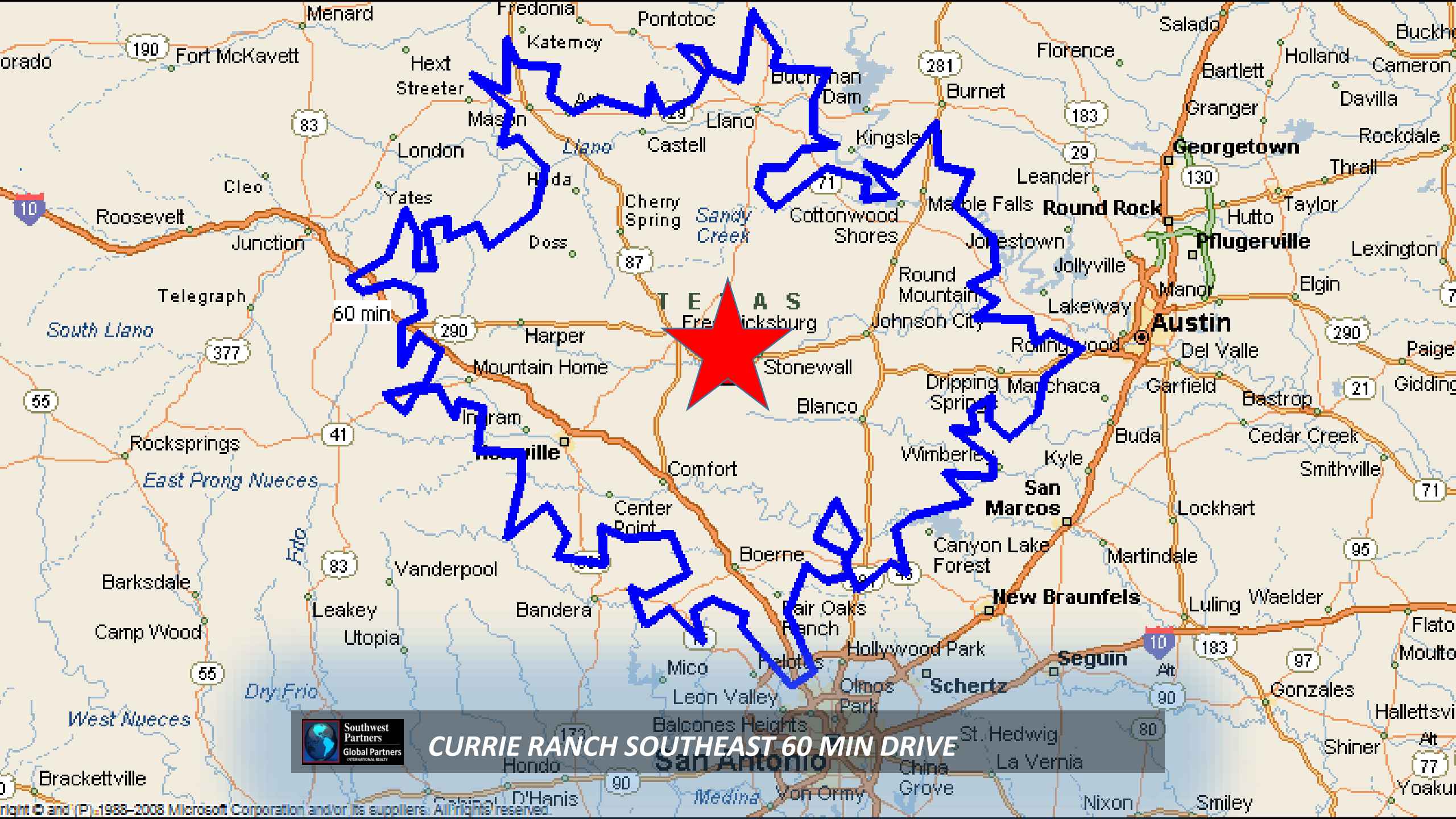


Copyright © and (P) 1988–2008 Microsoft Corporation and/or its suppliers. All rights reserved.



CURRIE RANCH SOUTHEAST 25 MI TO JOHNSON CITY





CURRIE RANCH SOUTHEAST 60 MIN DRIVE



CURRIE RANCH SOUTHEAST 90 MIN DRIVE



CURRIE RANCH SOUTHEAST TEXAS MAP



**Southwest
Partners**

Global Partners
INTERNATIONAL REALTY

Sherry “Princess” Cohen, CNE

HILL COUNTRY TEAM LEADER, REALTOR® RAINMAKER®

C: 800.948.1537

princess@swpre.com

O: 979.421.9996

swpre.com