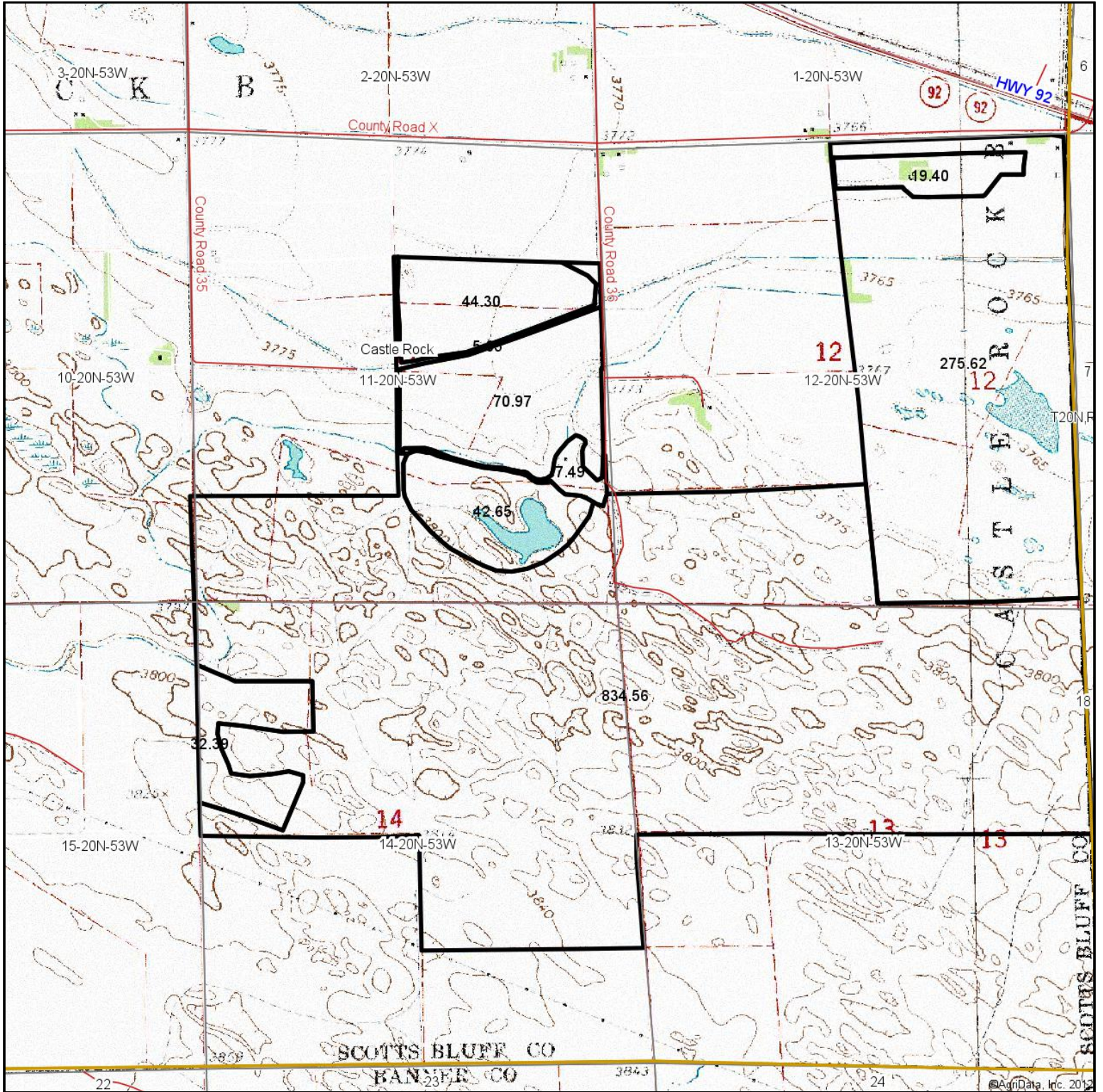


# Topography Map



**KRAUPIE'S**  
REAL ESTATE AUCTIONEERS  
917 Main St. PO Box 100, Bridgeport, NE 68308  
308-262-1150 www.farmauction.net

Maps provided by:  
**surety**  
CUSTOMIZED ONLINE MAPPING

©AgriData, Inc. 2012  
www.AgriDataInc.com

**11-20N-53W**  
**Scotts Bluff County**  
**Nebraska**

map center: 41° 42' 56.7, 103° 23' 34.3  
scale: 18619



9/18/2012

Field borders provided by Farm Service Agency as of 5/21/2008. Aerial photography provided by Aerial Photography Field Office.