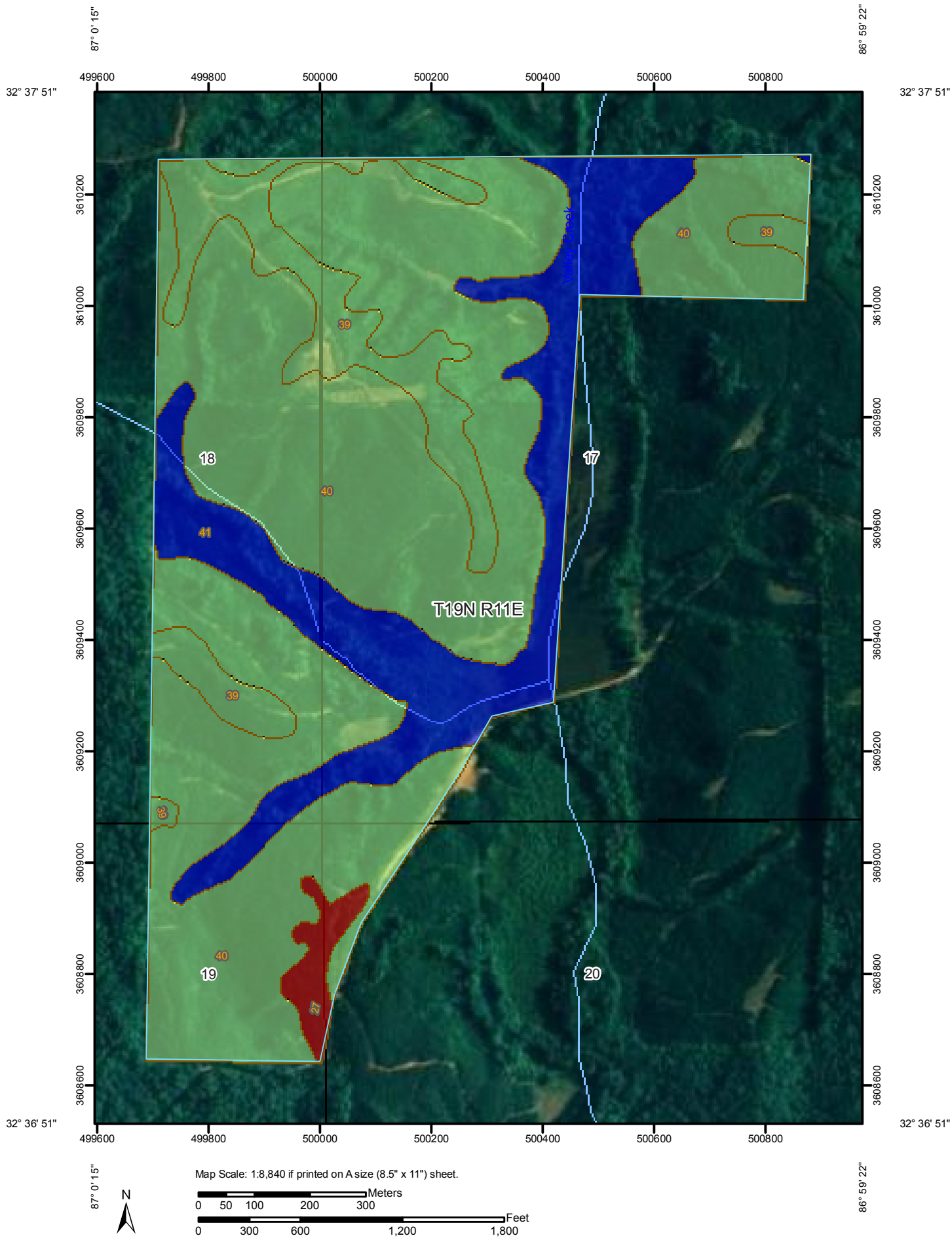



Forest Productivity (Tree Site Index): loblolly pine (Coile, Schumacher 1953 (690))—Dallas County, Alabama
(Dallas Co 280 ac Site Index for Loblolly pines)



MAP LEGEND

Area of Interest (AOI)

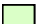
 Area of Interest (AOI)


Soils

 Soil Map Units

Soil Ratings

 ≤ 82


 $> 82 \text{ AND } \leq 88$

 $> 88 \text{ AND } \leq 98$

 Not rated or not available

Political Features

 Cities

 PLSS Township and Range

 PLSS Section

Water Features

 Streams and Canals


Transportation

 Rails

 Interstate Highways

 US Routes

 Major Roads

 Local Roads

MAP INFORMATION

Map Scale: 1:8,840 if printed on A size (8.5" × 11") sheet.

The soil surveys that comprise your AOI were mapped at 1:20,000.

Warning: Soil Map may not be valid at this scale.

Enlargement of maps beyond the scale of mapping can cause misunderstanding of the detail of mapping and accuracy of soil line placement. The maps do not show the small areas of contrasting soils that could have been shown at a more detailed scale.

Please rely on the bar scale on each map sheet for accurate map measurements.

Source of Map: Natural Resources Conservation Service

Web Soil Survey URL: <http://websoilsurvey.nrcs.usda.gov>

Coordinate System: UTM Zone 16N NAD83

This product is generated from the USDA-NRCS certified data as of the version date(s) listed below.

Soil Survey Area: Dallas County, Alabama

Survey Area Data: Version 6, Jul 14, 2011

Date(s) aerial images were photographed: 6/30/2006

The orthophoto or other base map on which the soil lines were compiled and digitized probably differs from the background imagery displayed on these maps. As a result, some minor shifting of map unit boundaries may be evident.

Forest Productivity (Tree Site Index): loblolly pine (Coile, Schumacher 1953 (690))

Forest Productivity (Tree Site Index): loblolly pine (Coile, Schumacher 1953 (690))— Summary by Map Unit — Dallas County, Alabama (AL047)				
Map unit symbol	Map unit name	Rating (feet)	Acres in AOI	Percent of AOI
27	Greenville loamy fine sand, 5 to 10 percent slopes	82	5.0	1.8%
39	Luverne loamy sand, 4 to 10 percent slopes	88	30.2	10.9%
40	Luverne-Greenville association, hilly	88	186.2	67.2%
41	Mantachie loam	98	55.7	20.1%
Totals for Area of Interest			277.0	100.0%

Description

The "site index" is the average height, in feet, that dominant and codominant trees of a given species attain in a specified number of years. The site index applies to fully stocked, even-aged, unmanaged stands.

This attribute is actually recorded as three separate values in the database. A low value and a high value indicate the range of this attribute for the soil component. A "representative" value indicates the expected value of this attribute for the component. For this attribute, only the representative value is used.

Rating Options

Units of Measure: feet

Tree: loblolly pine

Site Index Base: Coile, Schumacher 1953 (690)

Aggregation Method: Dominant Component

Component Percent Cutoff: None Specified

Tie-break Rule: Higher

Interpret Nulls as Zero: No