



\$849,500 (95.75% tax value)

3,800 SF home

24.19 acres

Equestrian facilities

Fort Bend County





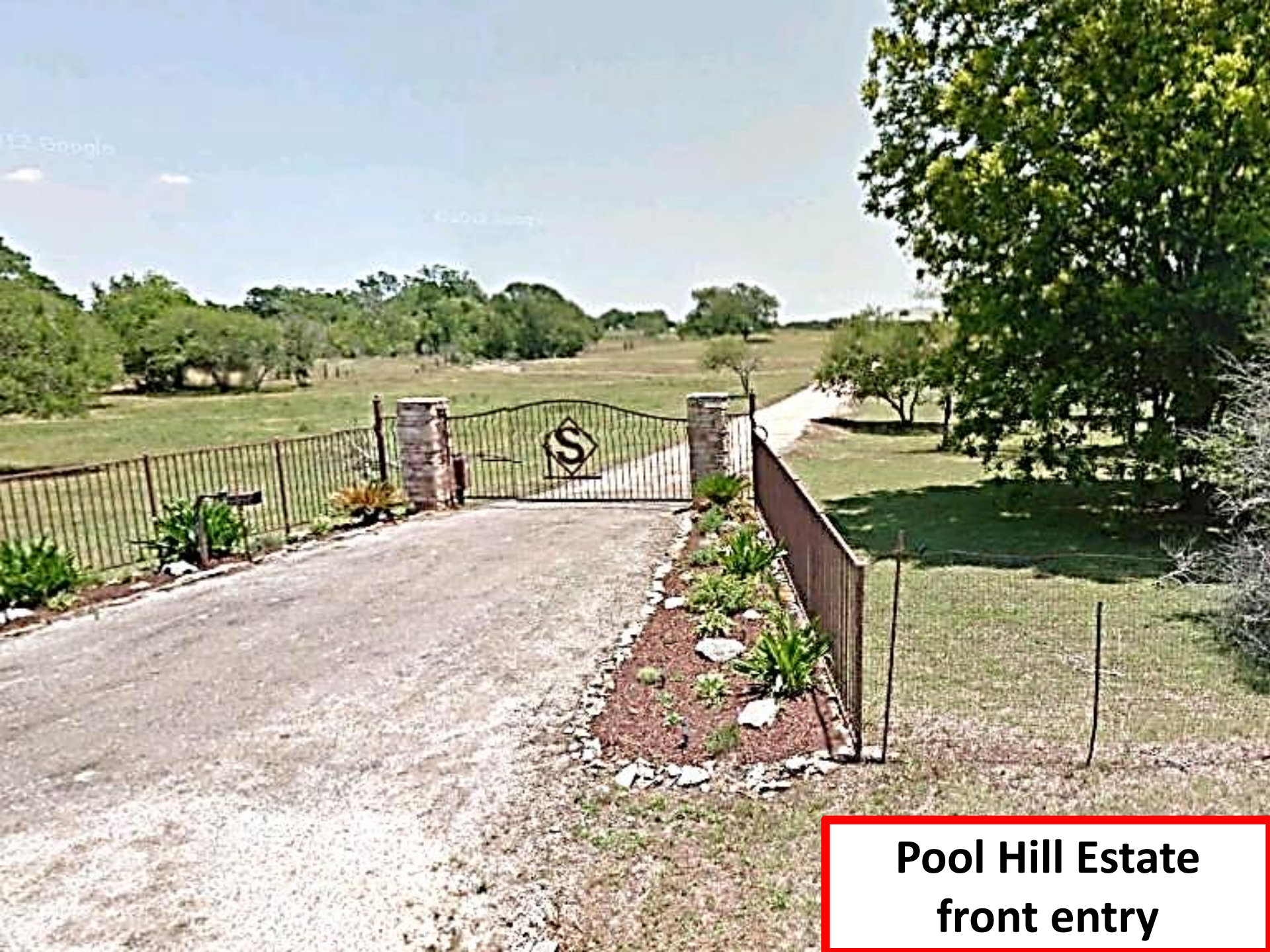
**Pool Hill Estate
front elevation**



**Pool Hill Estate
fenced front yard**



**Pool Hill Estate
rear elevation**



**Pool Hill Estate
front entry**



**Pool Hill Estate
front entry**



**Pool Hill Estate
front porch**



**Pool Hill Estate
front porch**



**Pool Hill Estate
Great Room**



**Pool Hill Estate
Great Room**



**Pool Hill Estate
Breakfast Bar**



**Pool Hill Estate
Kitchen**



**Pool Hill Estate
Breakfast Nook**



**Pool Hill Estate
breakfast areas**



**Pool Hill Estate
Dining Room**



**Pool Hill Estate
Master Bath**



**Pool Hill Estate
Guest Bedroom 1**



**Pool Hill Estate
upstairs room**



**Pool Hill Estate
carport**



**Pool Hill Estate
barn parking**



**Pool Hill Estate
barns**



**Pool Hill Estate
horse barn**



**Pool Hill Estate
stalls**



**Pool Hill Estate
roads**



**Pool Hill Estate
creek line**



**Pool Hill Estate
Live Oaks**



**Pool Hill Estate
Live Oaks**



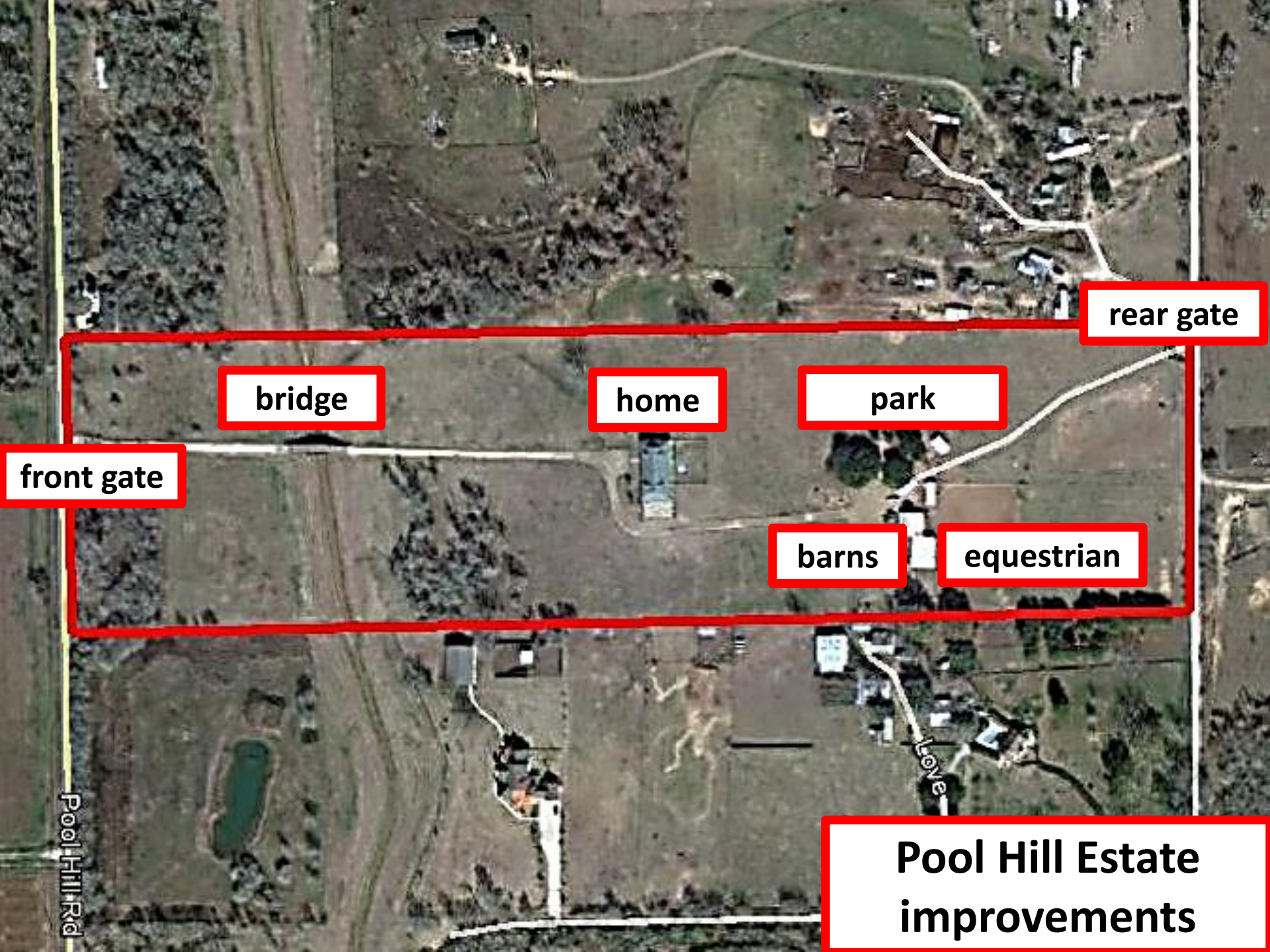
**Pool Hill Estate
wild flowers**



**Pool Hill Estate
road frontage**



**Pool Hill Estate
road frontage**



rear gate

bridge

home

park

front gate

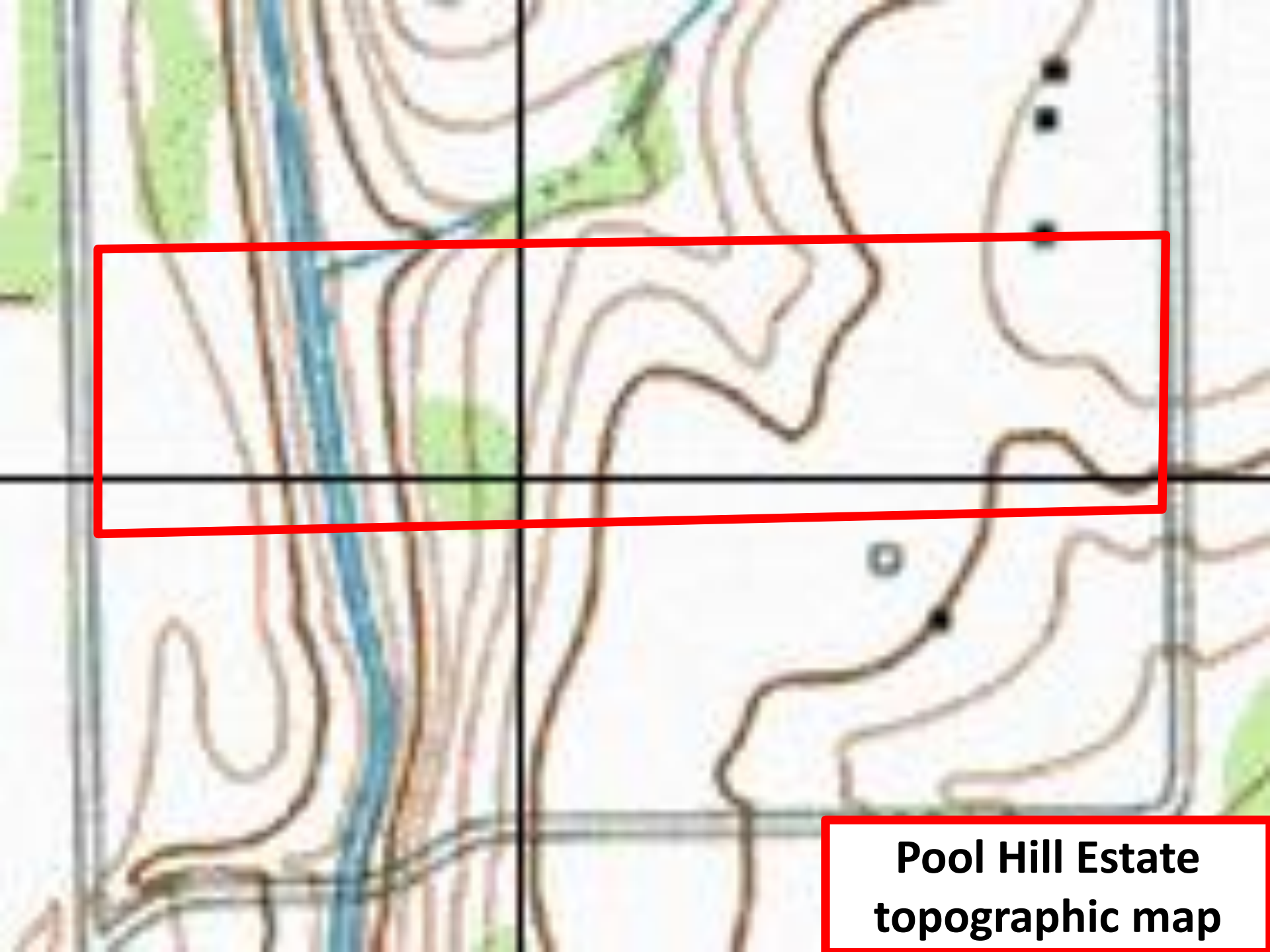
barns

equestrian

Pool Hill Rd

Love

Pool Hill Estate
improvements



**Pool Hill Estate
topographic map**



**Pool Hill Estate
Houston area map**



Southwest Partners

Global Partners

INTERNATIONAL REALTY

MALLORI GIBBS-RAMEY

Luxury Ranch Team Leader

713.503.6247

mallori.gibbs.ramey@southwestpartnersre.com

<http://www.southwestpartnersre.com/mallori.gibbs.ramey>





**Pool Hill Estate
pastoral setting**



**Pool Hill Estate
over the bridge**



**Pool Hill Estate
front elevation**



**Pool Hill Estate
front elevation**



**Pool Hill Estate
main elevation**



**Pool Hill Estate
from The Bridge**



**Pool Hill Estate
front elevation**



**Pool Hill Estate
front yard**



**Pool Hill Estate
carport**



**Pool Hill Estate
carport**



**Pool Hill Estate
rear elevation**



**Pool Hill Estate
rear elevation**



**Pool Hill Estate
rear elevation**



\$849,500 (95.75% tax value)

3,800 SF home

24.19 acres

Equestrian facilities

Fort Bend County





Southwest Partners

Global Partners

INTERNATIONAL REALTY

MALLORI GIBBS-RAMEY

Luxury Ranch Team Leader

713.503.6247

mallori.gibbs.ramey@southwestpartnersre.com

<http://www.southwestpartnersre.com/mallori.gibbs.ramey>





**Pool Hill Estate
front porch**



**Pool Hill Estate
front porch**



**Pool Hill Estate
Dining Room**



**Pool Hill Estate
Dining Room**



**Pool Hill Estate
Great Room**



**Pool Hill Estate
Great Room**



**Pool Hill Estate
Great Room**



**Pool Hill Estate
Kitchen area**



\$849,500 (95.75% tax value)

3,800 SF home

24.19 acres

Equestrian facilities

Fort Bend County





Southwest Partners

Global Partners

INTERNATIONAL REALTY

MALLORI GIBBS-RAMEY

Luxury Ranch Team Leader

713.503.6247

mallori.gibbs.ramey@southwestpartnersre.com

<http://www.southwestpartnersre.com/mallori.gibbs.ramey>





**Pool Hill Estate
Kitchen**



**Pool Hill Estate
Breakfast Bar**



**Pool Hill Estate
Breakfast Nook**



**Pool Hill Estate
breakfast areas**



**Pool Hill Estate
Master Suite**



**Pool Hill Estate
Master Suite**



**Pool Hill Estate
Master Suite**



\$849,500 (95.75% tax value)

3,800 SF home

24.19 acres

Equestrian facilities

Fort Bend County





Southwest Partners

Global Partners

INTERNATIONAL REALTY

MALLORI GIBBS-RAMEY

Luxury Ranch Team Leader

713.503.6247

mallori.gibbs.ramey@southwestpartnersre.com

<http://www.southwestpartnersre.com/mallori.gibbs.ramey>





**Pool Hill Estate
Master Bath**



**Pool Hill Estate
Master Bath**



**Pool Hill Estate
Guest Bedroom 1**



**Pool Hill Estate
Guest Bedroom 2**



**Pool Hill Estate
Guest Baths**



**Pool Hill Estate
Upstairs Room**



**Pool Hill Estate
Live Oaks**



\$849,500 (95.75% tax value)

3,800 SF home

24.19 acres

Equestrian facilities

Fort Bend County





Southwest Partners

Global Partners

INTERNATIONAL REALTY

MALLORI GIBBS-RAMEY

Luxury Ranch Team Leader

713.503.6247

mallori.gibbs.ramey@southwestpartnersre.com

<http://www.southwestpartnersre.com/mallori.gibbs.ramey>





**Pool Hill Estate
Live Oaks**



**Pool Hill Estate
Live Oaks**



**Pool Hill Estate
Live Oaks**



**Pool Hill Estate
sandy pastures**



**Pool Hill Estate
pasture**



**Pool Hill Estate
pasture**



**Pool Hill Estate
wild flowers**



**Pool Hill Estate
creek line**



**Pool Hill Estate
board fencing**



\$849,500 (95.75% tax value)

3,800 SF home

24.19 acres

Equestrian facilities

Fort Bend County





Southwest Partners

Global Partners

INTERNATIONAL REALTY

MALLORI GIBBS-RAMEY

Luxury Ranch Team Leader

713.503.6247

mallori.gibbs.ramey@southwestpartnersre.com

<http://www.southwestpartnersre.com/mallori.gibbs.ramey>





**Pool Hill Estate
The Bridge**



**Pool Hill Estate
parking area**



**Pool Hill Estate
roads**



**Pool Hill Estate
front gate**



**Pool Hill Estate
barns**



**Pool Hill Estate
barns**



**Pool Hill Estate
barns**



\$849,500 (95.75% tax value)

3,800 SF home

24.19 acres

Equestrian facilities

Fort Bend County





Southwest Partners

Global Partners

INTERNATIONAL REALTY

MALLORI GIBBS-RAMEY

Luxury Ranch Team Leader

713.503.6247

mallori.gibbs.ramey@southwestpartnersre.com

<http://www.southwestpartnersre.com/mallori.gibbs.ramey>





**Pool Hill Estate
horse walker**



**Pool Hill Estate
barns**



**Pool Hill Estate
barns**



**Pool Hill Estate
barn parking**



**Pool Hill Estate
barn parking**



**Pool Hill Estate
horse barn**



**Pool Hill Estate
barn**



**Pool Hill Estate
stalls**



**Pool Hill Estate
stalls**



\$849,500 (95.75% tax value)

3,800 SF home

24.19 acres

Equestrian facilities

Fort Bend County





Southwest Partners

Global Partners

INTERNATIONAL REALTY

MALLORI GIBBS-RAMEY

Luxury Ranch Team Leader

713.503.6247

mallori.gibbs.ramey@southwestpartnersre.com

<http://www.southwestpartnersre.com/mallori.gibbs.ramey>





**Pool Hill Estate
loafing shed**



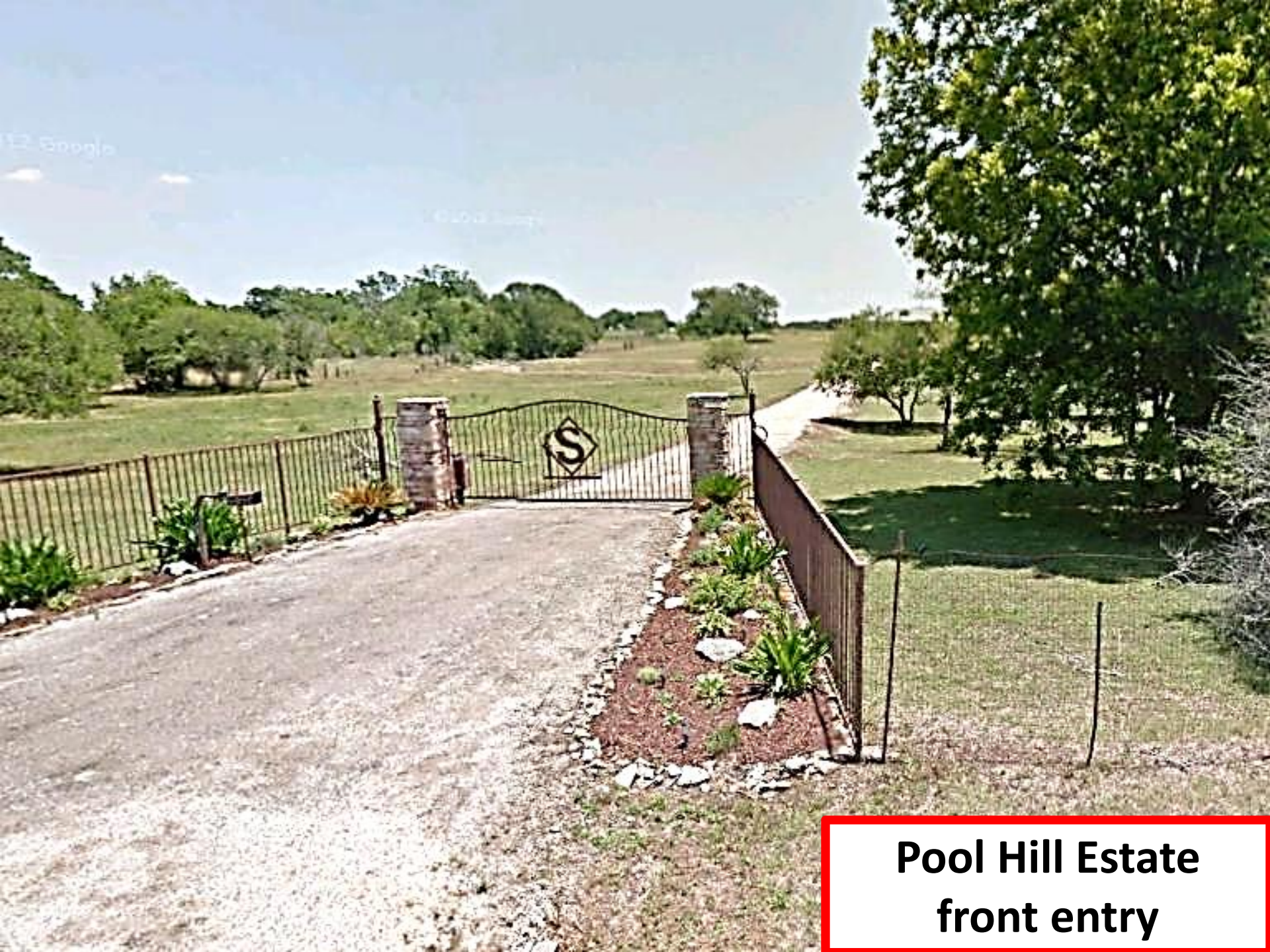
**Pool Hill Estate
loafing shed**



**Pool Hill Estate
loading shed**



**Pool Hill Estate
front entry**



**Pool Hill Estate
front entry**



\$849,500 (95.75% tax value)

3,800 SF home

24.19 acres

Equestrian facilities

Fort Bend County





Southwest Partners

Global Partners

INTERNATIONAL REALTY

MALLORI GIBBS-RAMEY

Luxury Ranch Team Leader

713.503.6247

mallori.gibbs.ramey@southwestpartnersre.com

<http://www.southwestpartnersre.com/mallori.gibbs.ramey>





**Pool Hill Estate
road frontage**



**Pool Hill Estate
road frontage**



**Pool Hill Estate
road frontage**



**Pool Hill Estate
road frontage**



**Pool Hill Estate
road frontage**



Pool Hill Road

© 2012 Google
© 2012 Google

29°42'06.72" N 95°56'39.95" W elev 107 ft

Pool Hill Estate
Pool Hill RD north

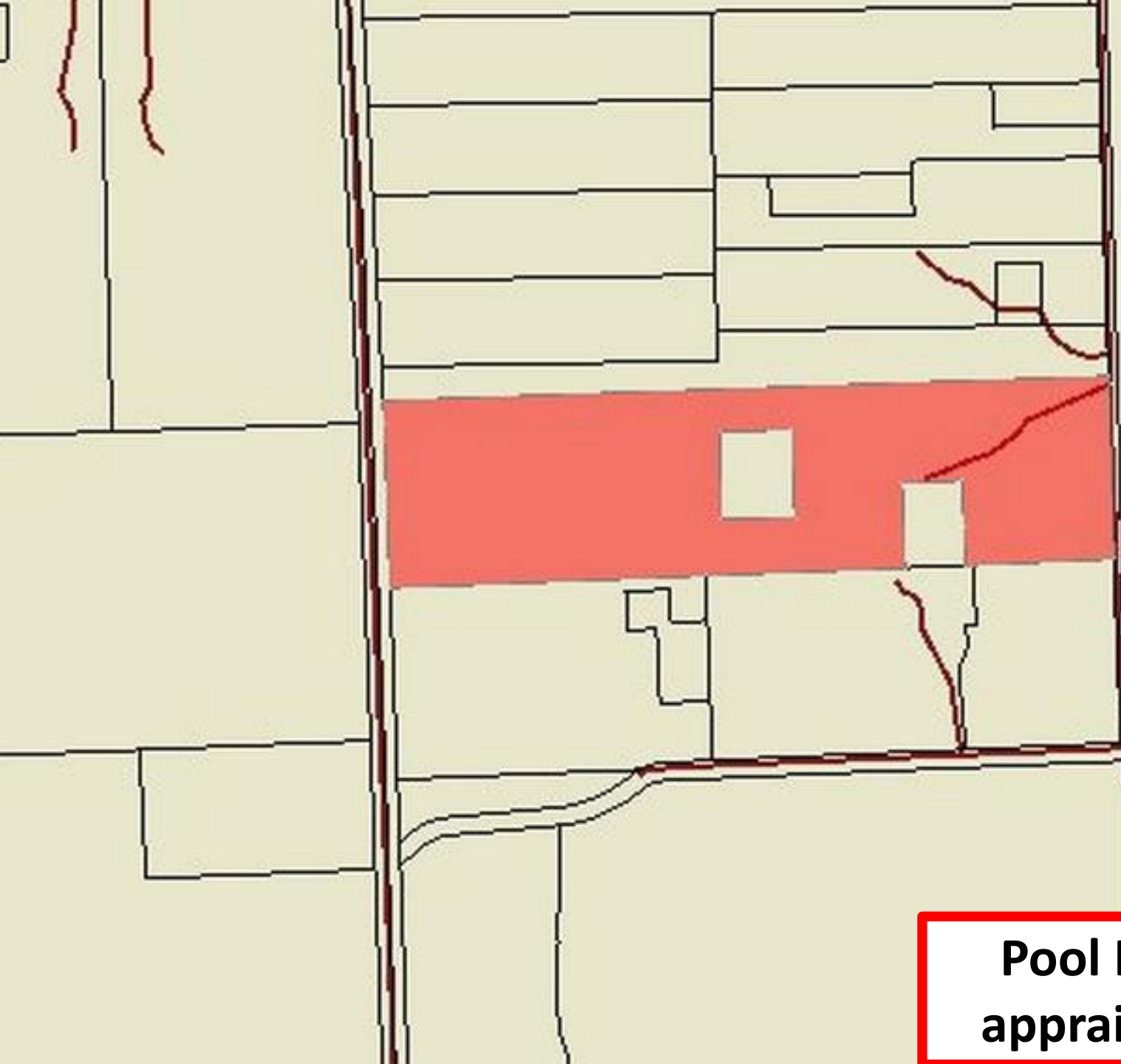


Pool Hill Road

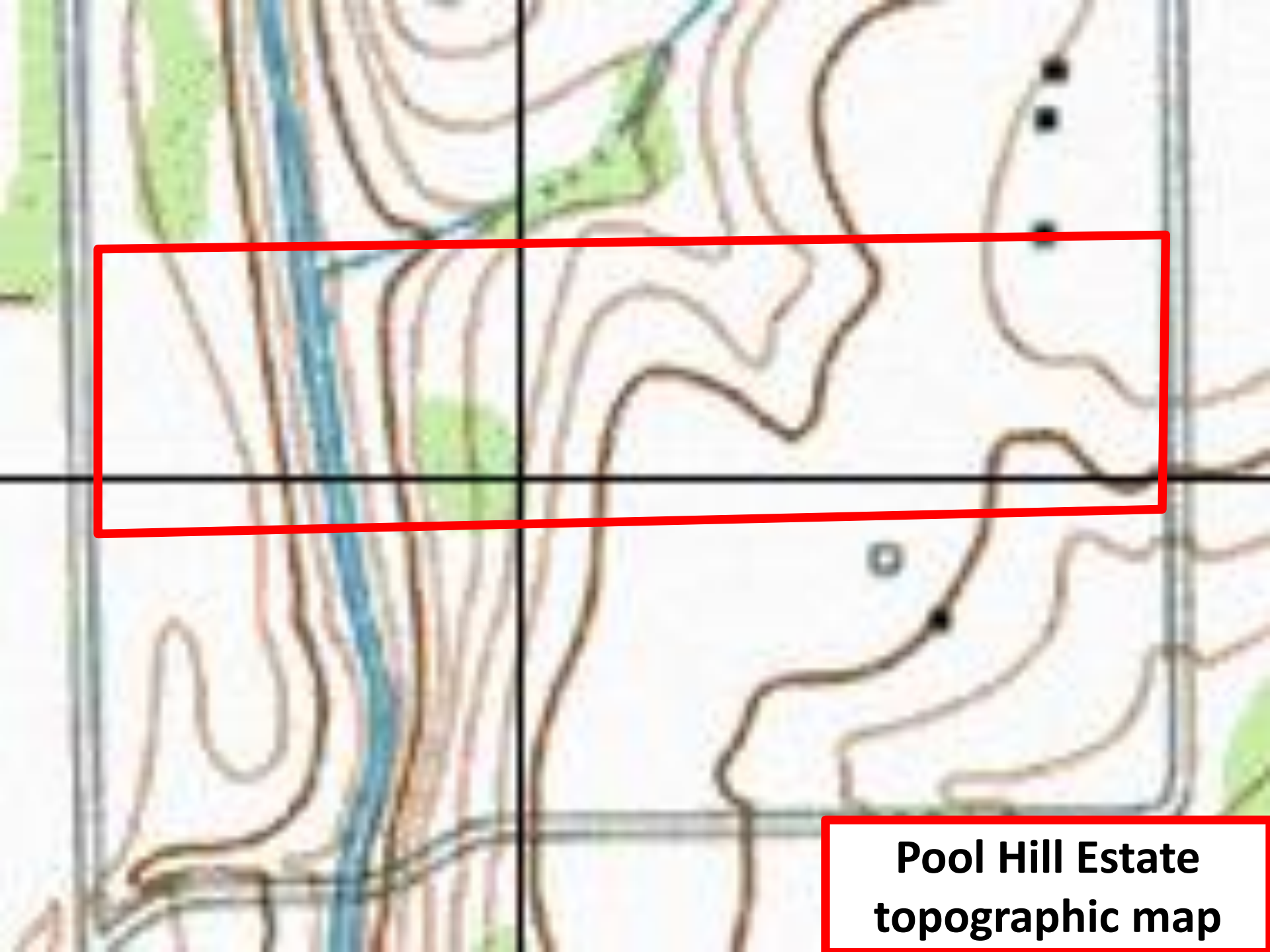
Pool Hill Estate
Pool Hill RD south

© 2012 C
© 2012 C

29°42'00.31" N 95°56'39"



**Pool Hill Estate
appraisal district**



**Pool Hill Estate
topographic map**



\$849,500 (95.75% tax value)

3,800 SF home

24.19 acres

Equestrian facilities

Fort Bend County





Southwest Partners

Global Partners

INTERNATIONAL REALTY

MALLORI GIBBS-RAMEY

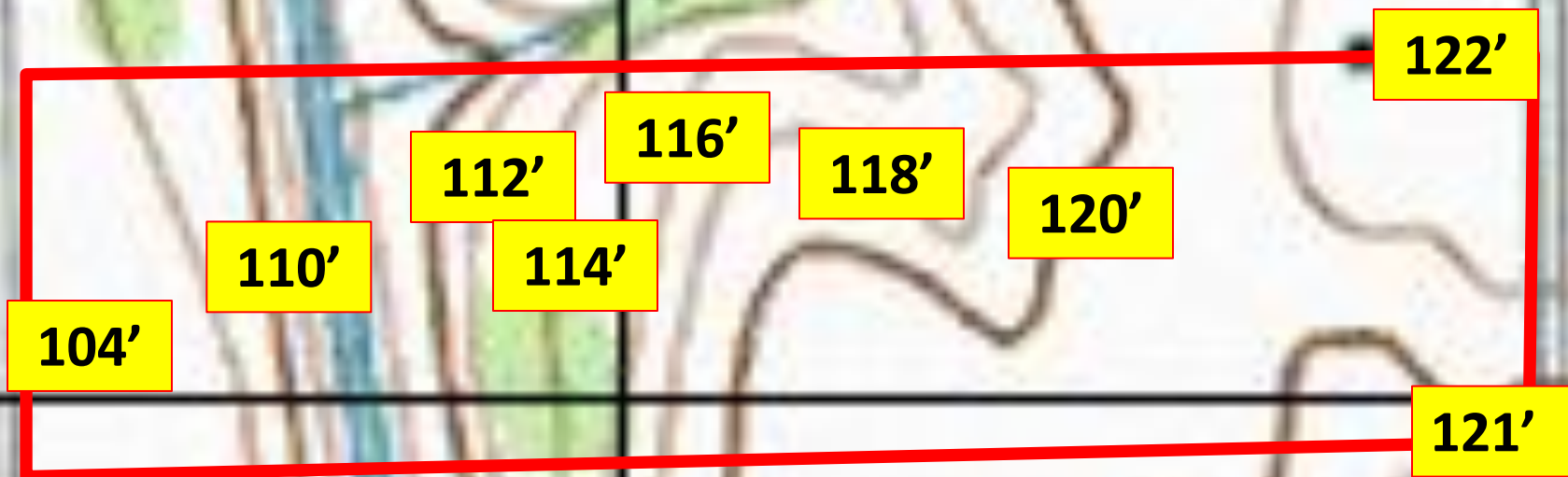
Luxury Ranch Team Leader

713.503.6247

mallori.gibbs.ramey@southwestpartnersre.com

<http://www.southwestpartnersre.com/mallori.gibbs.ramey>

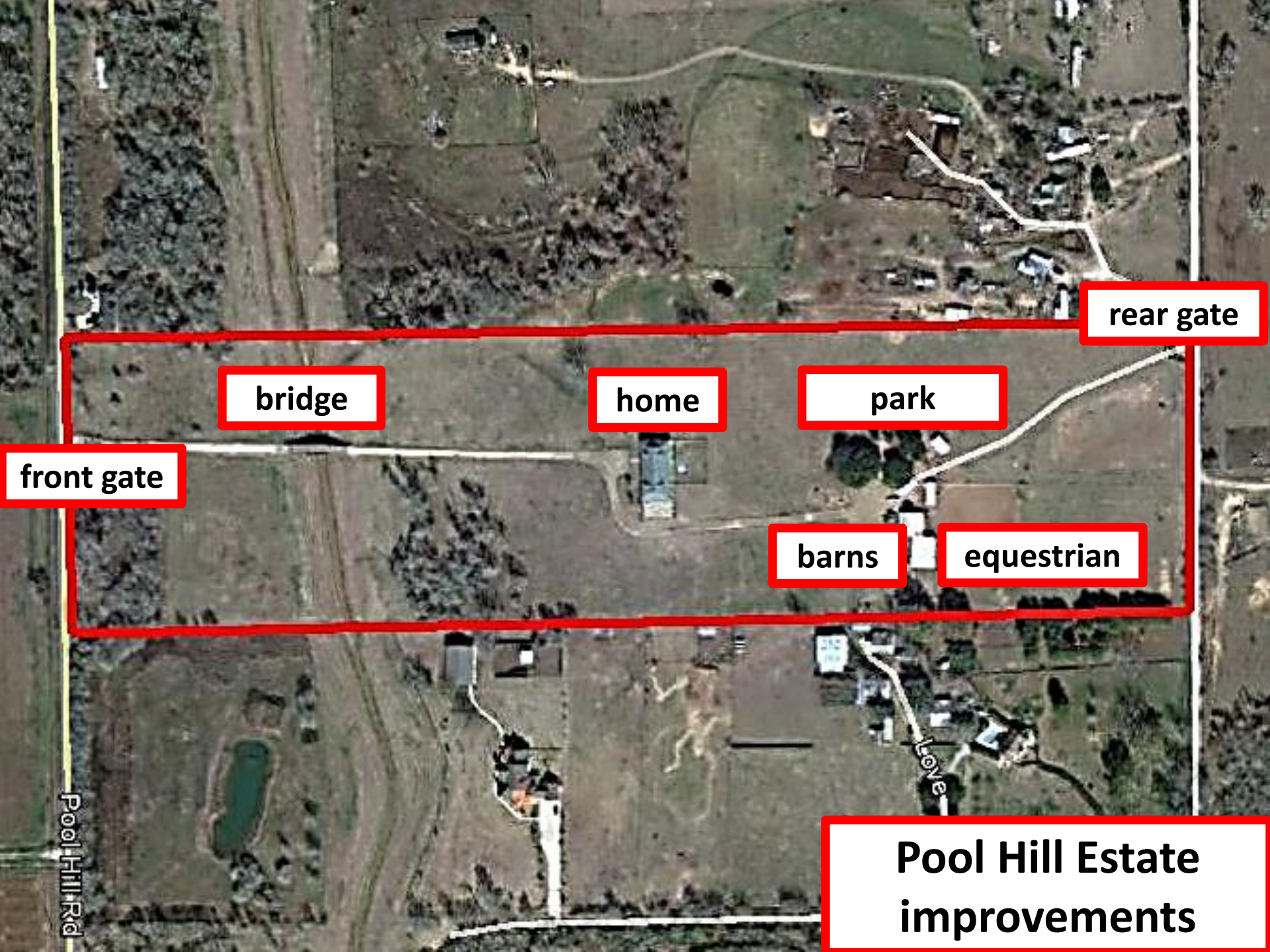




**Pool Hill Estate
elevations**



**Pool Hill Estate
satellite**



rear gate

bridge

home

park

front gate

barns

equestrian

Pool Hill Rd

Love

Pool Hill Estate
improvements



© 2012 C

Imagery Date: 1/27/2011

29°42'02.32" N 95°56'26"

**Pool Hill Estate
bird's view**



© 2012 Google

**Pool Hill Estate
bird's view**

ate: 1/27/2011

29°42'01.92" N 95°56'21.91" W el



© 2012 Google

29°42'02.09" N 95°55'23.96" W elev 125

**Pool Hill Estate
bird's view**

7/2011



Imagery Date: 1/27/2011

29°42'03.43" N 95°56'36"

© 2012 C

**Pool Hill Estate
bird's view NW**



**Pool Hill Estate
bird's view NE**



\$849,500 (95.75% tax value)

3,800 SF home

24.19 acres

Equestrian facilities

Fort Bend County





Southwest Partners

Global Partners

INTERNATIONAL REALTY

MALLORI GIBBS-RAMEY

Luxury Ranch Team Leader

713.503.6247

mallori.gibbs.ramey@southwestpartnersre.com

<http://www.southwestpartnersre.com/mallori.gibbs.ramey>





© 2012 C

Imagery Date: 1/27/2011

29°42'01.50" N 95°56'17"

**Pool Hill Estate
bird's view SE**

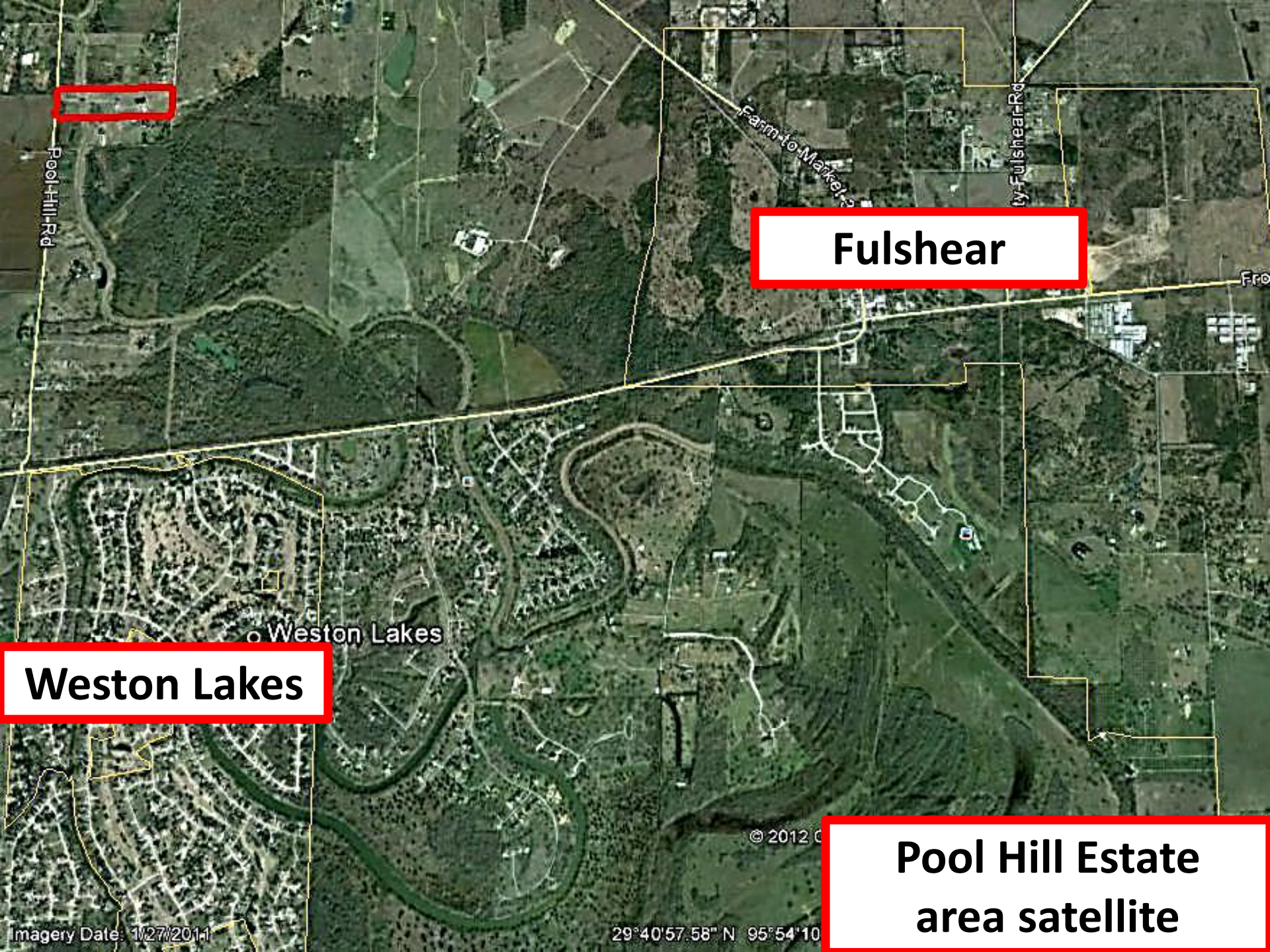


Imagery Date: 1/27/2011

29°42'01.48" N 95°56'36"

© 2012 C

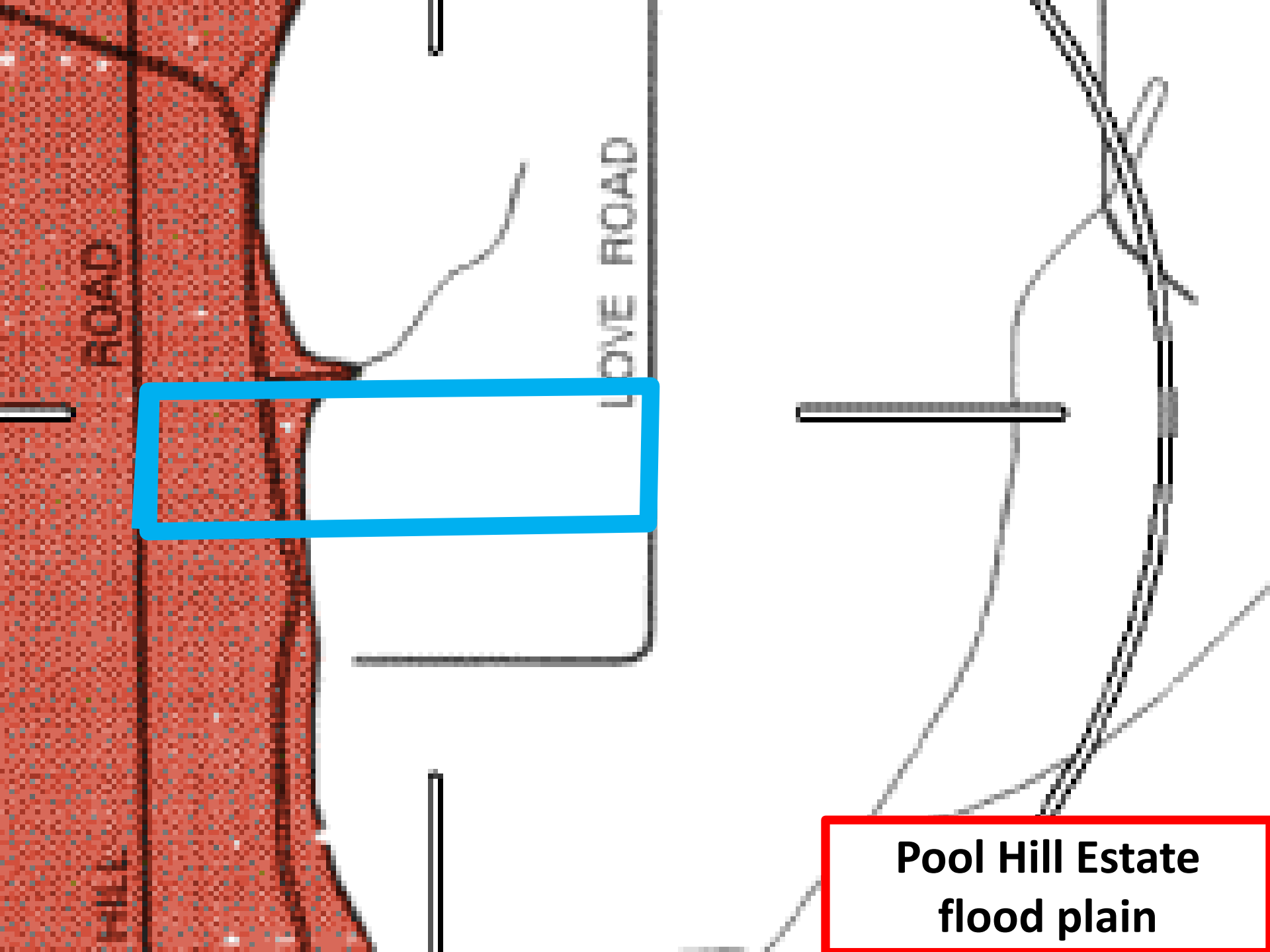
**Pool Hill Estate
bird's view SW**



Fulshear

Weston Lakes

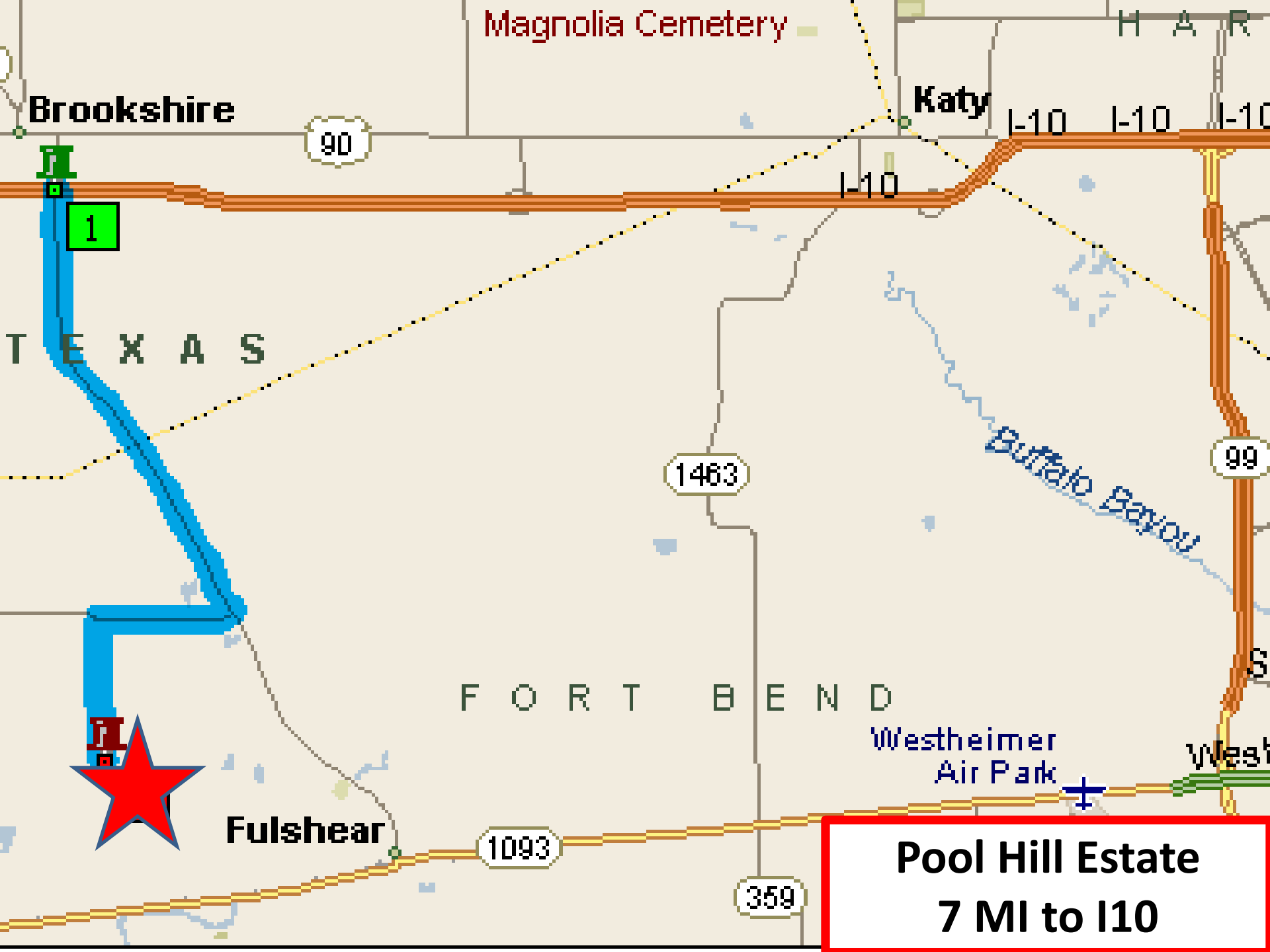
**Pool Hill Estate
area satellite**



**Pool Hill Estate
flood plain**



**Pool Hill Estate
close-up map**



Magnolia Cemetery

H A R

Brookshire

90

Katy

I-10

I-10

I-10

I-10

1

T E X A S

1463

Buffalo Bayou

99

F O R T B E N D

Westheimer
Air Park

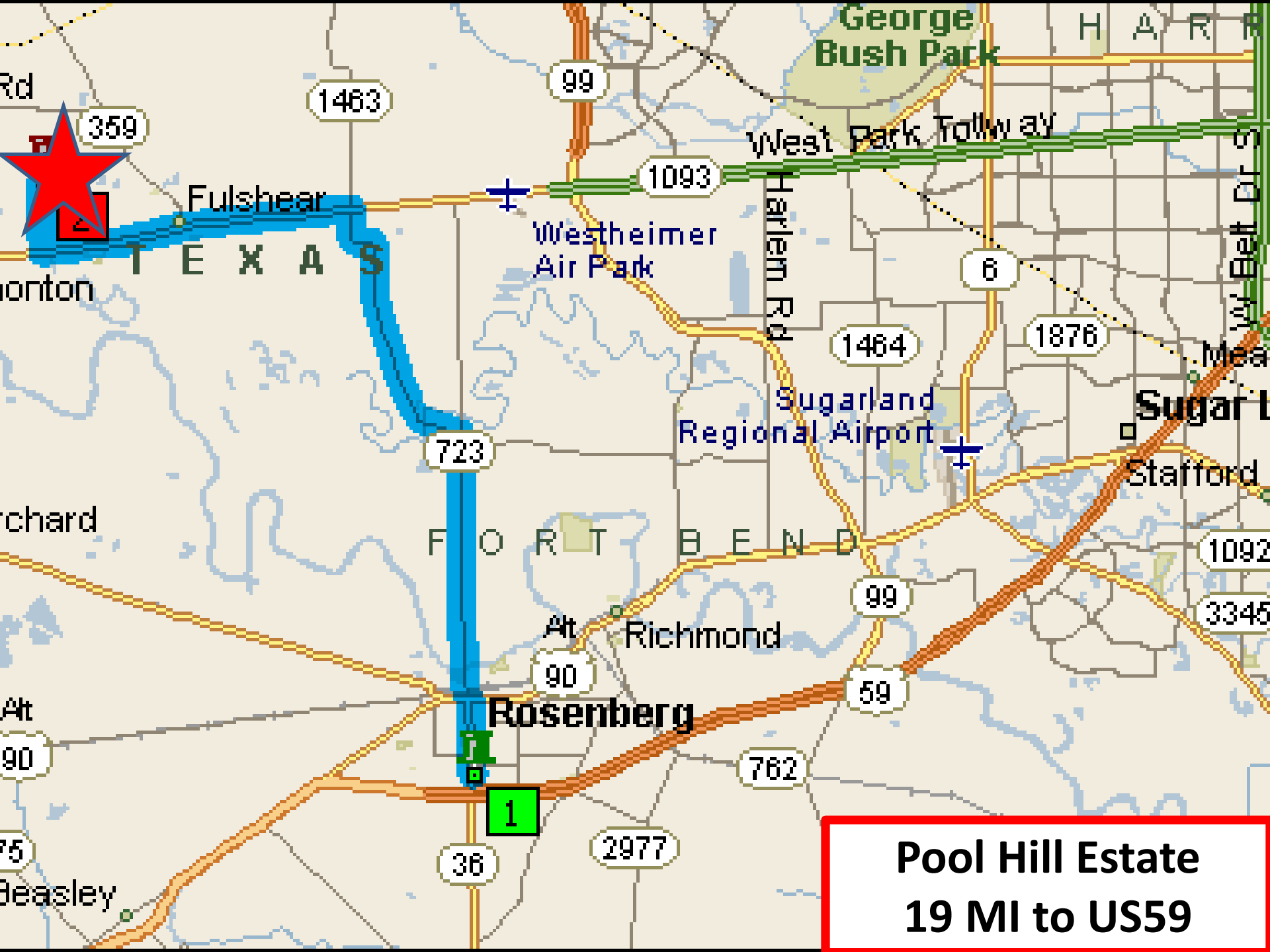
West

Fulshear

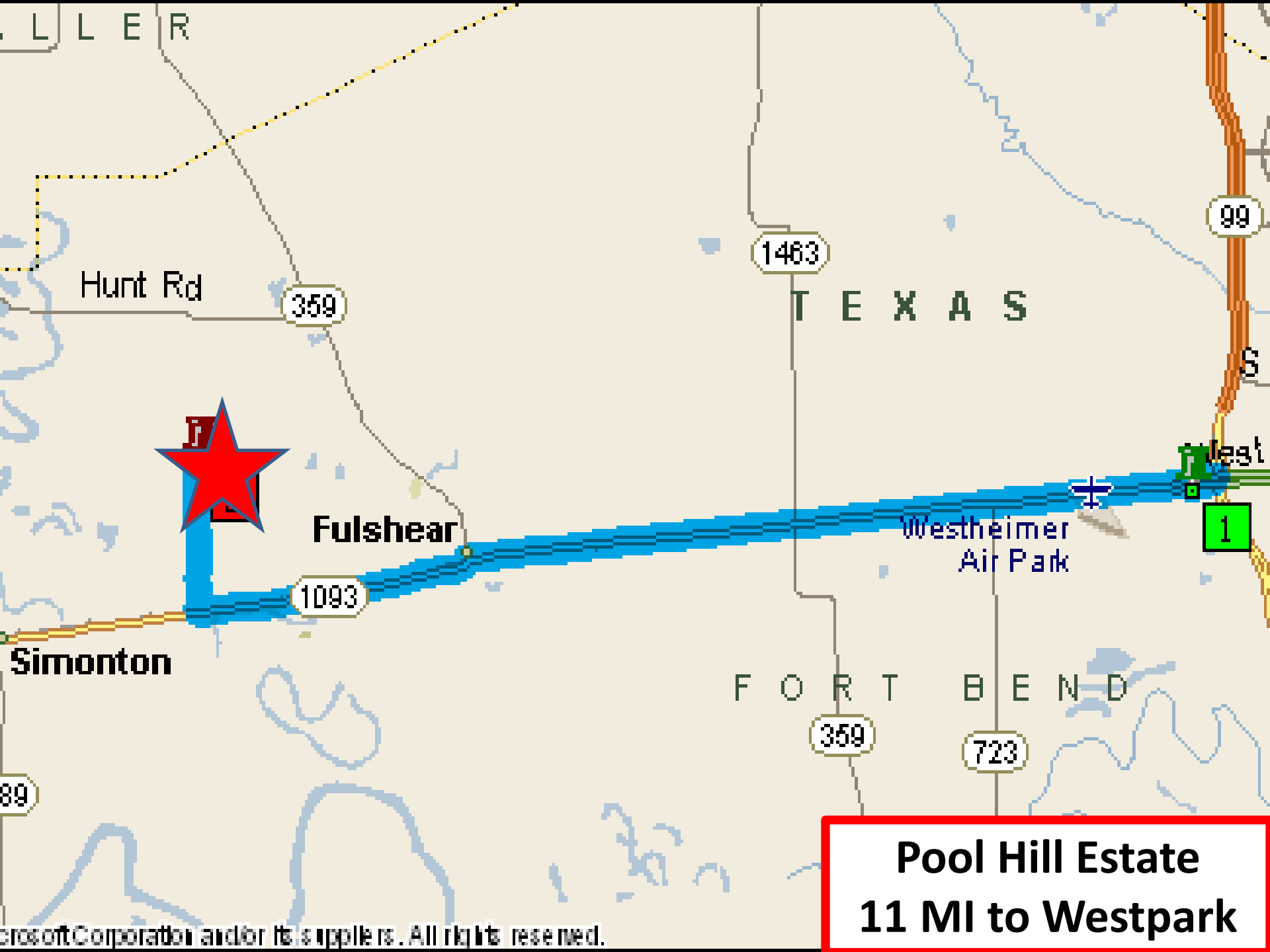
1093

359

Pool Hill Estate
7 MI to I10



**Pool Hill Estate
19 MI to US59**



**Pool Hill Estate
11 MI to Westpark**



\$849,500 (95.75% tax value)

3,800 SF home

24.19 acres

Equestrian facilities

Fort Bend County





Southwest Partners

Global Partners

INTERNATIONAL REALTY

MALLORI GIBBS-RAMEY

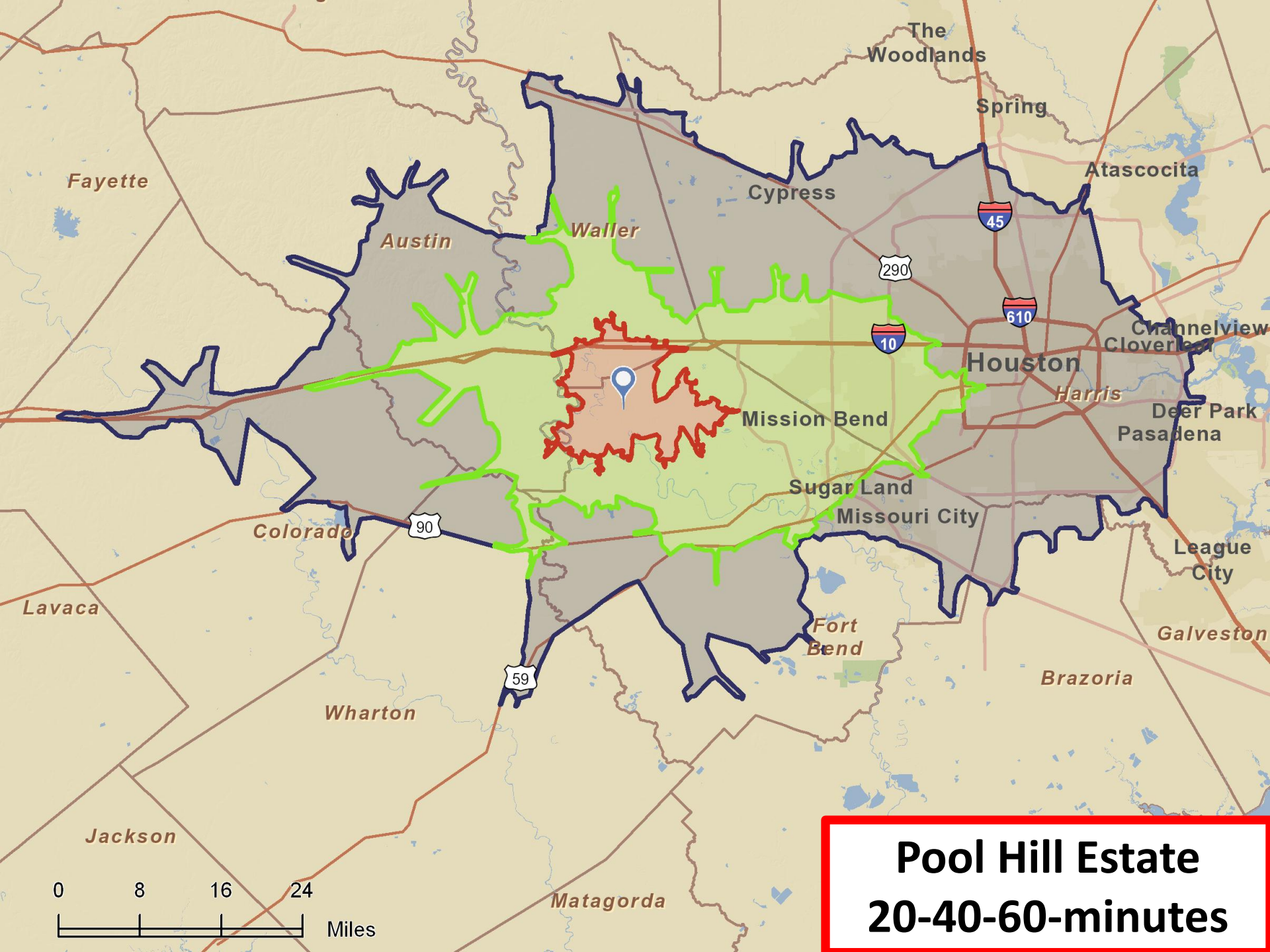
Luxury Ranch Team Leader

713.503.6247

mallori.gibbs.ramey@southwestpartnersre.com

<http://www.southwestpartnersre.com/mallori.gibbs.ramey>





Pool Hill Estate
20-40-60-minutes



**Pool Hill Estate
Houston area Map**



**Ft. Bend County
area pictures**



**Ft. Bend County
area pictures**



**Ft. Bend County
area pictures**



**Ft. Bend County
area pictures**



**Ft. Bend County
area pictures**



**Ft. Bend County
area pictures**



\$849,500 (95.75% tax value)

3,800 SF home

24.19 acres

Equestrian facilities

Fort Bend County





Southwest Partners

Global Partners

INTERNATIONAL REALTY

MALLORI GIBBS-RAMEY

Luxury Ranch Team Leader

713.503.6247

mallori.gibbs.ramey@southwestpartnersre.com

<http://www.southwestpartnersre.com/mallori.gibbs.ramey>





**Ft. Bend County
area pictures**



**Ft. Bend County
area pictures**



**Ft. Bend County
area pictures**



**Ft. Bend County
area pictures**



**Ft. Bend County
area pictures**



**Ft. Bend County
area pictures**



**Ft. Bend County
area pictures**



**Ft. Bend County
area pictures**



\$849,500 (95.75% tax value)

3,800 SF home

24.19 acres

Equestrian facilities

Fort Bend County





Southwest Partners

Global Partners

INTERNATIONAL REALTY

MALLORI GIBBS-RAMEY

Luxury Ranch Team Leader

713.503.6247

mallori.gibbs.ramey@southwestpartnersre.com

<http://www.southwestpartnersre.com/mallori.gibbs.ramey>



CITY OF SUGAR LAND



Photo George Hosek

**Ft. Bend County
area pictures**



**Ft. Bend County
area pictures**



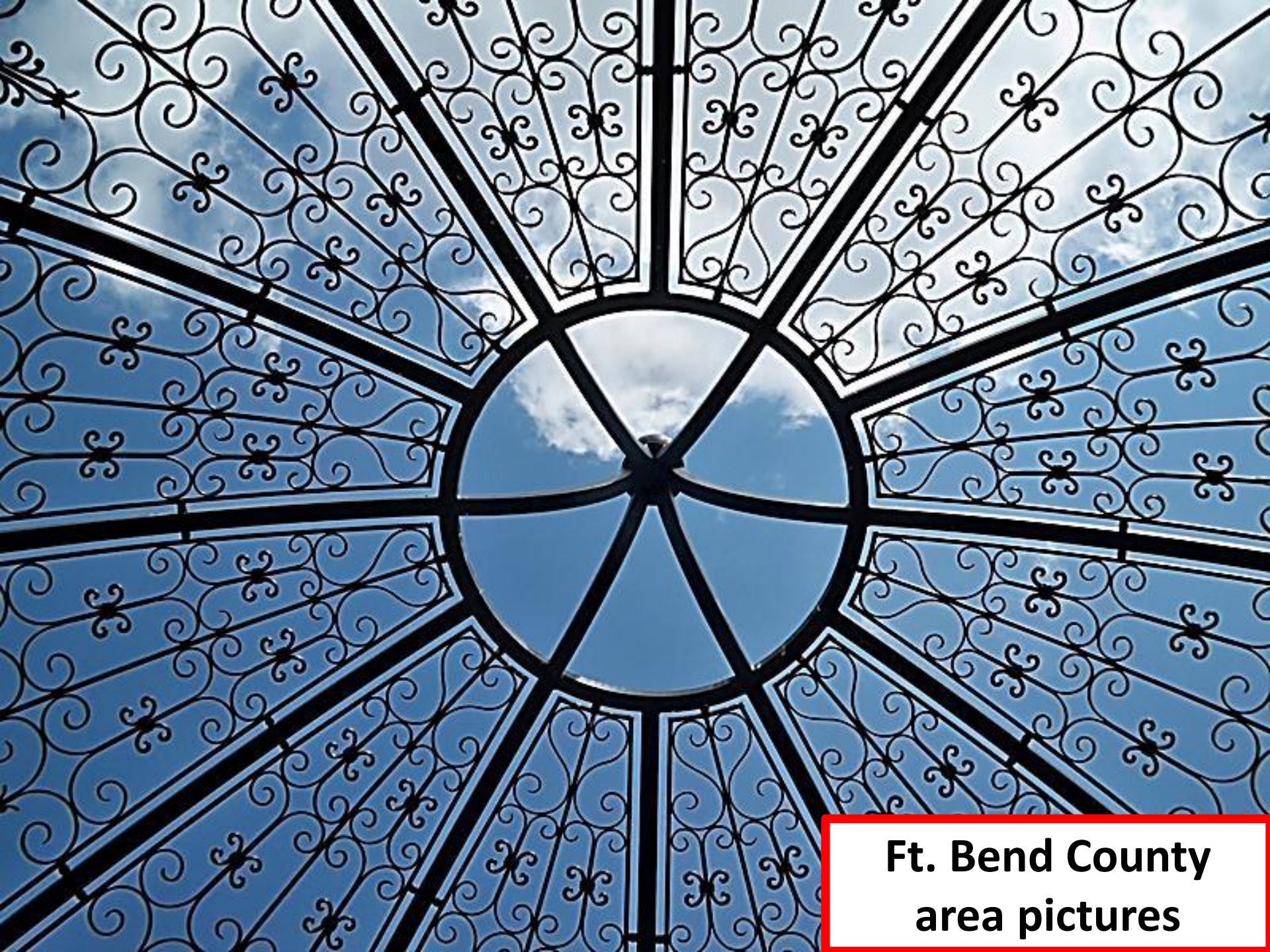
**Ft. Bend County
area pictures**



**Ft. Bend County
area pictures**



**Ft. Bend County
area pictures**



**Ft. Bend County
area pictures**



**Ft. Bend County
area pictures**



Mercedes-Benz

Mercedes-Benz of Sugar Land

**Ft. Bend County
area pictures**



\$849,500 (95.75% tax value)

3,800 SF home

24.19 acres

Equestrian facilities

Fort Bend County





Southwest Partners

Global Partners

INTERNATIONAL REALTY

MALLORI GIBBS-RAMEY

Luxury Ranch Team Leader

713.503.6247

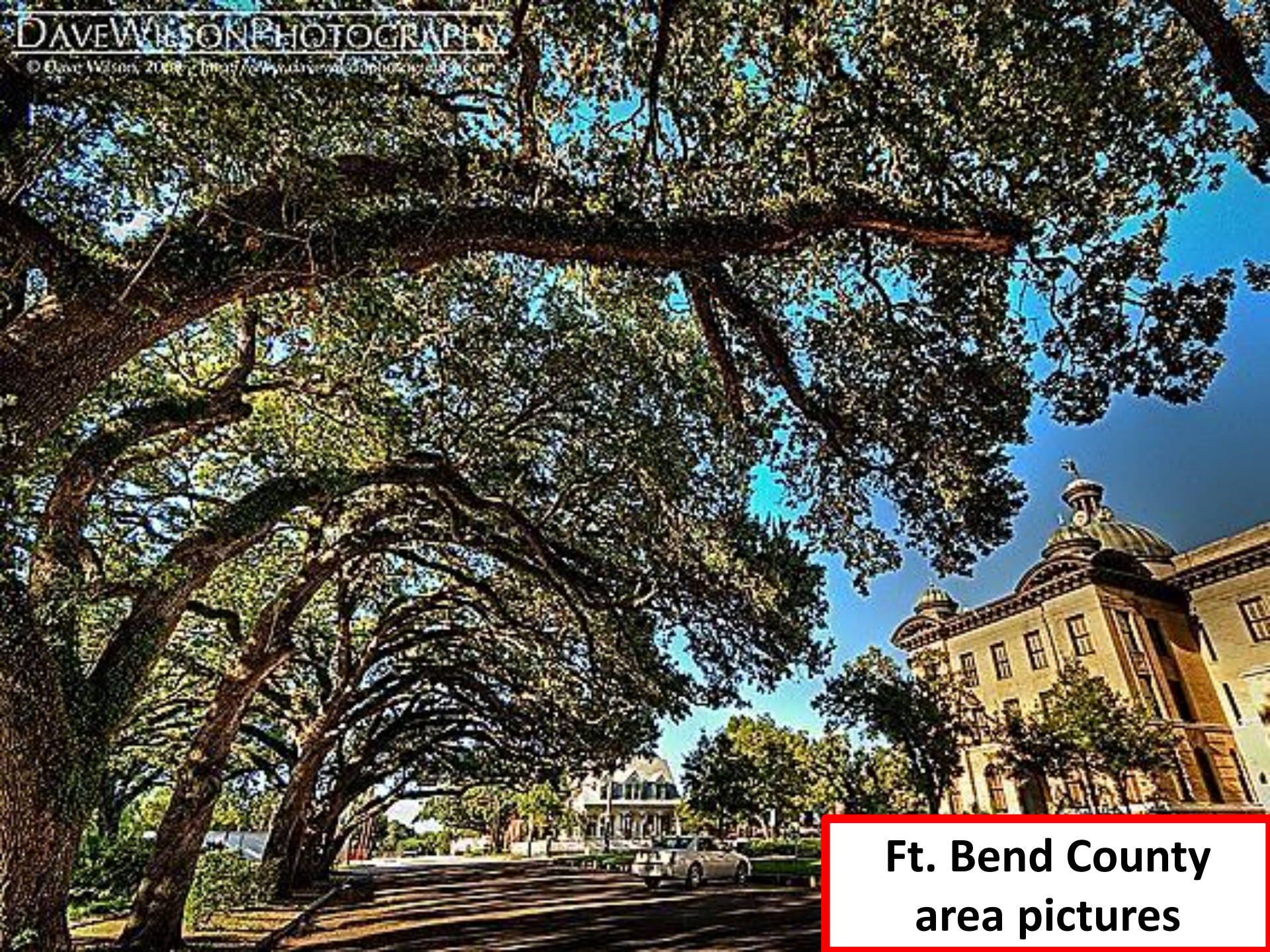
mallori.gibbs.ramey@southwestpartnersre.com

<http://www.southwestpartnersre.com/mallori.gibbs.ramey>





**Ft. Bend County
area pictures**



**Ft. Bend County
area pictures**



**Ft. Bend County
area pictures**



**Ft. Bend County
area pictures**



THOMPSONS General Mercantile
DRINK
Coca-Cola

KMK photography

**Ft. Bend County
area pictures**



**Ft. Bend County
area pictures**



**Ft. Bend County
area pictures**



\$849,500 (95.75% tax value)

3,800 SF home

24.19 acres

Equestrian facilities

Fort Bend County





Southwest Partners

Global Partners

INTERNATIONAL REALTY

MALLORI GIBBS-RAMEY

Luxury Ranch Team Leader

713.503.6247

mallori.gibbs.ramey@southwestpartnersre.com

<http://www.southwestpartnersre.com/mallori.gibbs.ramey>





**Ft. Bend County
area pictures**



**Ft. Bend County
area pictures**



**Ft. Bend County
area pictures**



**Ft. Bend County
area pictures**



**Ft. Bend County
area pictures**



© bruceXedwards

**Ft. Bend County
area pictures**



**Ft. Bend County
area pictures**



\$849,500 (95.75% tax value)

3,800 SF home

24.19 acres

Equestrian facilities

Fort Bend County





Southwest Partners

Global Partners

INTERNATIONAL REALTY

MALLORI GIBBS-RAMEY

Luxury Ranch Team Leader

713.503.6247

mallori.gibbs.ramey@southwestpartnersre.com

<http://www.southwestpartnersre.com/mallori.gibbs.ramey>





**Ft. Bend County
area pictures**



**Ft. Bend County
area pictures**



**Ft. Bend County
area pictures**



**Ft. Bend County
area pictures**



**Ft. Bend County
area pictures**



**Ft. Bend County
area pictures**



**Ft. Bend County
area pictures**



**Ft. Bend County
area pictures**



\$849,500 (95.75% tax value)

3,800 SF home

24.19 acres

Equestrian facilities

Fort Bend County





Southwest Partners

Global Partners

INTERNATIONAL REALTY

MALLORI GIBBS-RAMEY

Luxury Ranch Team Leader

713.503.6247

mallori.gibbs.ramey@southwestpartnersre.com

<http://www.southwestpartnersre.com/mallori.gibbs.ramey>





**Ft. Bend County
area pictures**



**Ft. Bend County
area pictures**



**Ft. Bend County
area pictures**



**Ft. Bend County
area pictures**





**Ft. Bend County
area pictures**



**Ft. Bend County
area pictures**



\$849,500 (95.75% tax value)

3,800 SF home

24.19 acres

Equestrian facilities

Fort Bend County





\$849,500 (95.75% tax value)

3,800 SF home

24.19 acres

Equestrian facilities

Fort Bend County





Southwest Partners

Global Partners

INTERNATIONAL REALTY

MALLORI GIBBS-RAMEY

Luxury Ranch Team Leader

713.503.6247

mallori.gibbs.ramey@southwestpartnersre.com

<http://www.southwestpartnersre.com/mallori.gibbs.ramey>





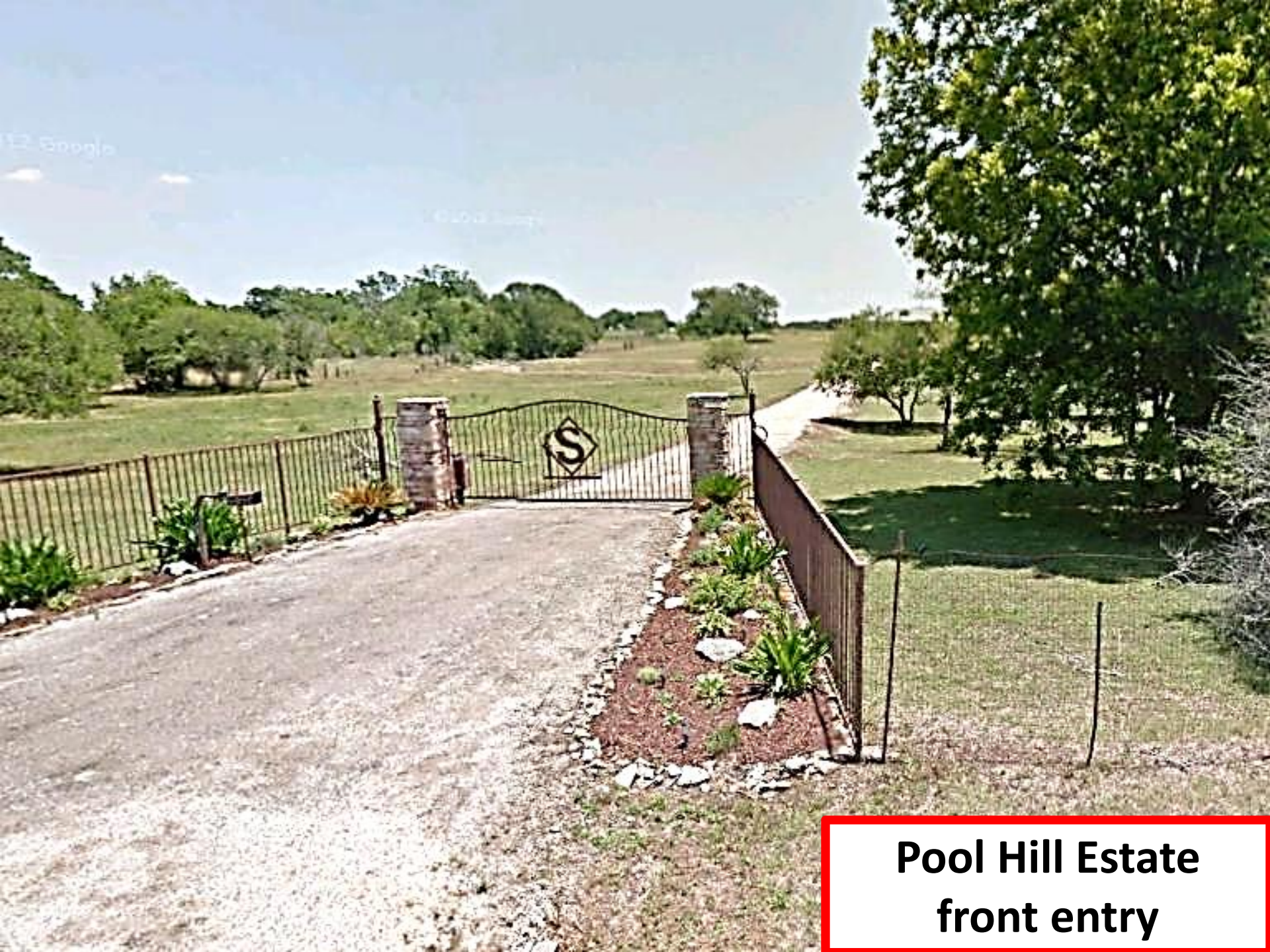
**Pool Hill Estate
front elevation**



**Pool Hill Estate
fenced front yard**



**Pool Hill Estate
rear elevation**



**Pool Hill Estate
front entry**



**Pool Hill Estate
front entry**



**Pool Hill Estate
front porch**



**Pool Hill Estate
front porch**



**Pool Hill Estate
Great Room**



\$849,500 (95.75% tax value)

3,800 SF home

24.19 acres

Equestrian facilities

Fort Bend County





Southwest Partners

Global Partners

INTERNATIONAL REALTY

MALLORI GIBBS-RAMEY

Luxury Ranch Team Leader

713.503.6247

mallori.gibbs.ramey@southwestpartnersre.com

<http://www.southwestpartnersre.com/mallori.gibbs.ramey>





**Pool Hill Estate
Great Room**



**Pool Hill Estate
Breakfast Bar**



**Pool Hill Estate
Kitchen**



**Pool Hill Estate
Breakfast Nook**



**Pool Hill Estate
breakfast areas**



**Pool Hill Estate
Dining Room**



**Pool Hill Estate
Master Bedroom**



**Pool Hill Estate
Master Bedroom**



\$849,500 (95.75% tax value)

3,800 SF home

24.19 acres

Equestrian facilities

Fort Bend County





Southwest Partners

Global Partners

INTERNATIONAL REALTY

MALLORI GIBBS-RAMEY

Luxury Ranch Team Leader

713.503.6247

mallori.gibbs.ramey@southwestpartnersre.com

<http://www.southwestpartnersre.com/mallori.gibbs.ramey>





**Pool Hill Estate
Master Suite**



**Pool Hill Estate
Master Bath**



**Pool Hill Estate
Guest Bedroom 1**



**Pool Hill Estate
upstairs room**



**Pool Hill Estate
carport**



**Pool Hill Estate
barn parking**



**Pool Hill Estate
barns**



**Pool Hill Estate
horse barn**



\$849,500 (95.75% tax value)

3,800 SF home

24.19 acres

Equestrian facilities

Fort Bend County





Southwest Partners

Global Partners

INTERNATIONAL REALTY

MALLORI GIBBS-RAMEY

Luxury Ranch Team Leader

713.503.6247

mallori.gibbs.ramey@southwestpartnersre.com

<http://www.southwestpartnersre.com/mallori.gibbs.ramey>





**Pool Hill Estate
stalls**



**Pool Hill Estate
roads**



**Pool Hill Estate
creek line**



**Pool Hill Estate
Live Oaks**



**Pool Hill Estate
Live Oaks**



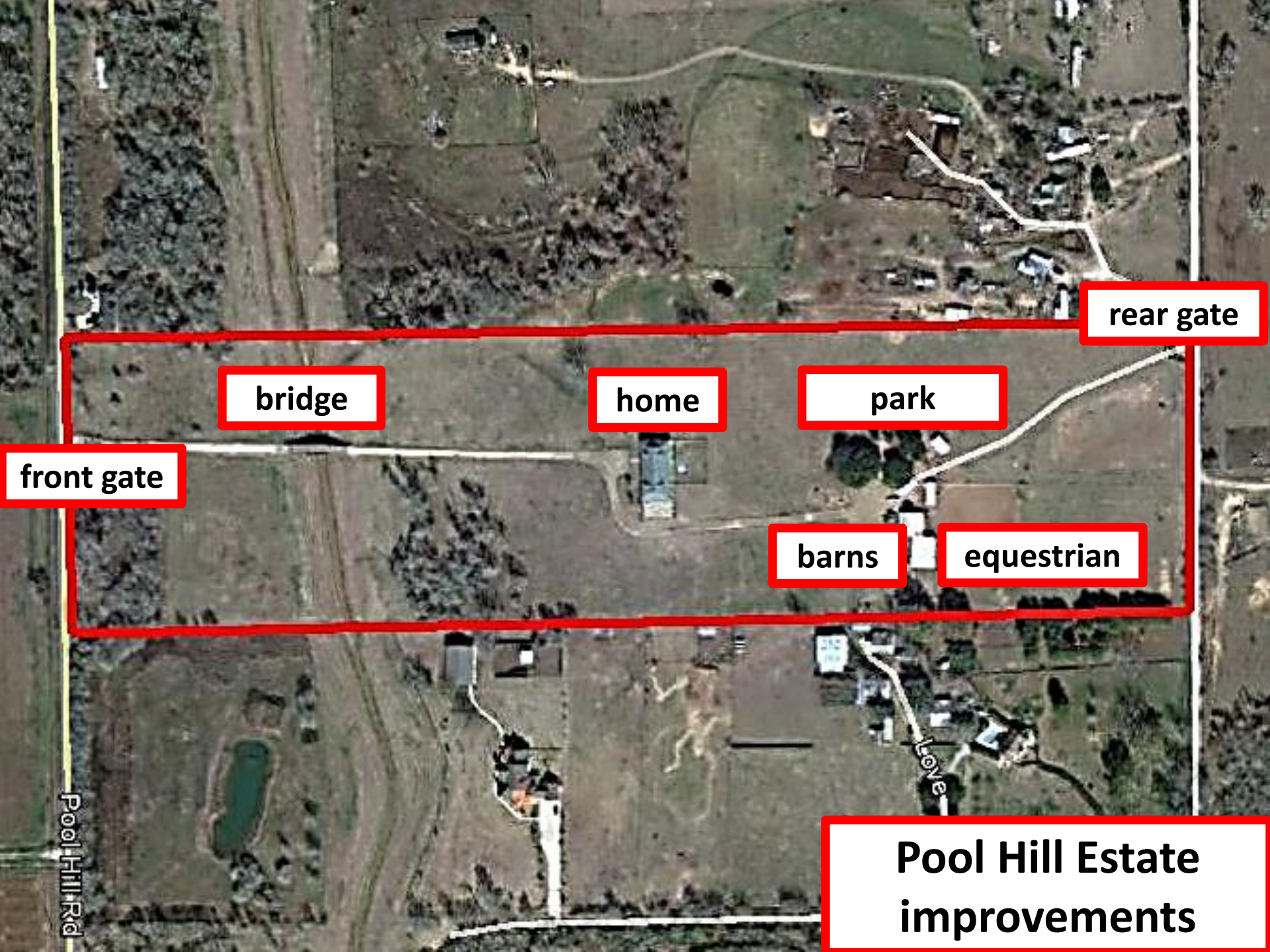
**Pool Hill Estate
wild flowers**



**Pool Hill Estate
road frontage**



**Pool Hill Estate
road frontage**



rear gate

bridge

home

park

front gate

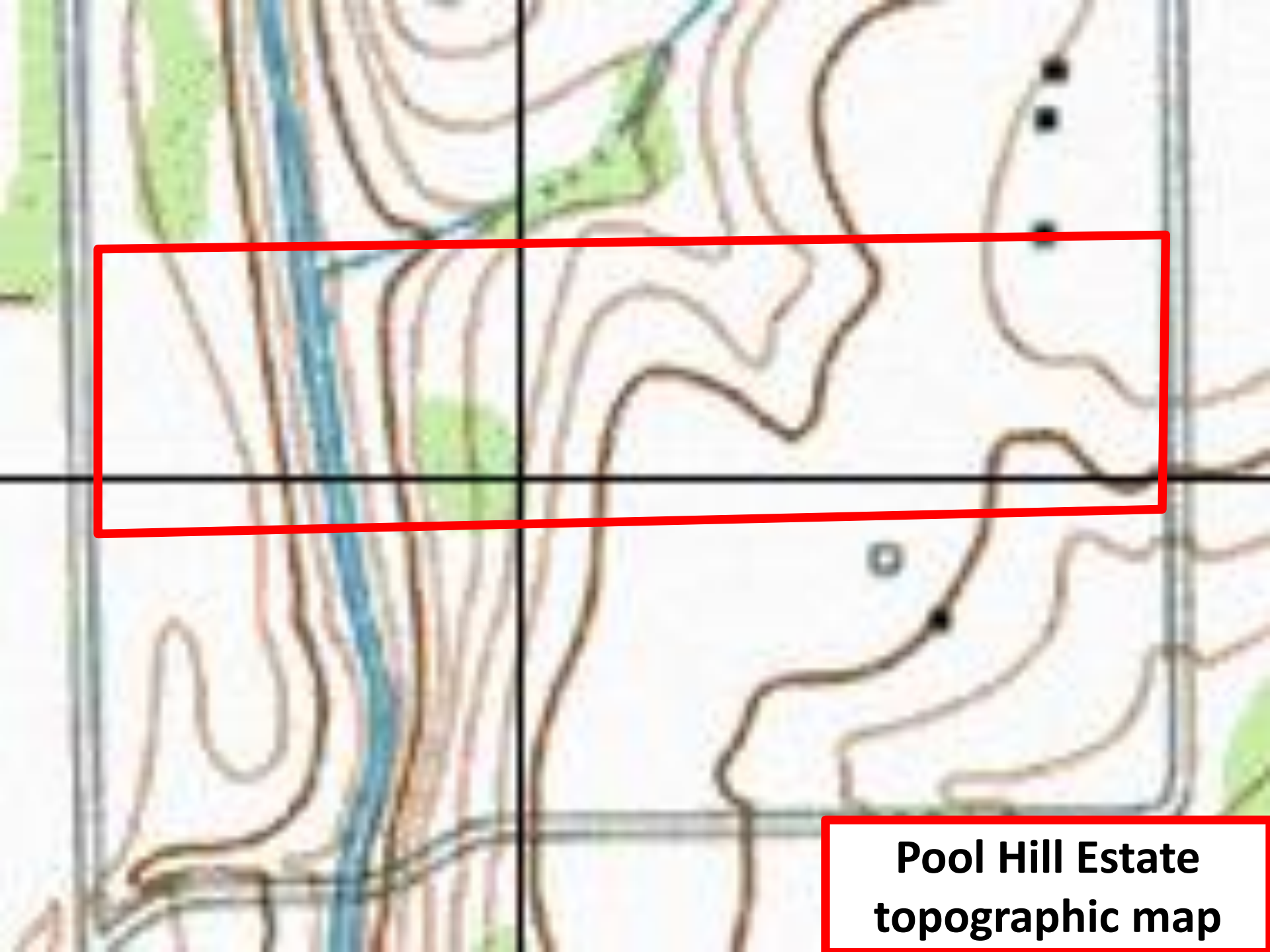
barns

equestrian

Pool Hill Rd

Love

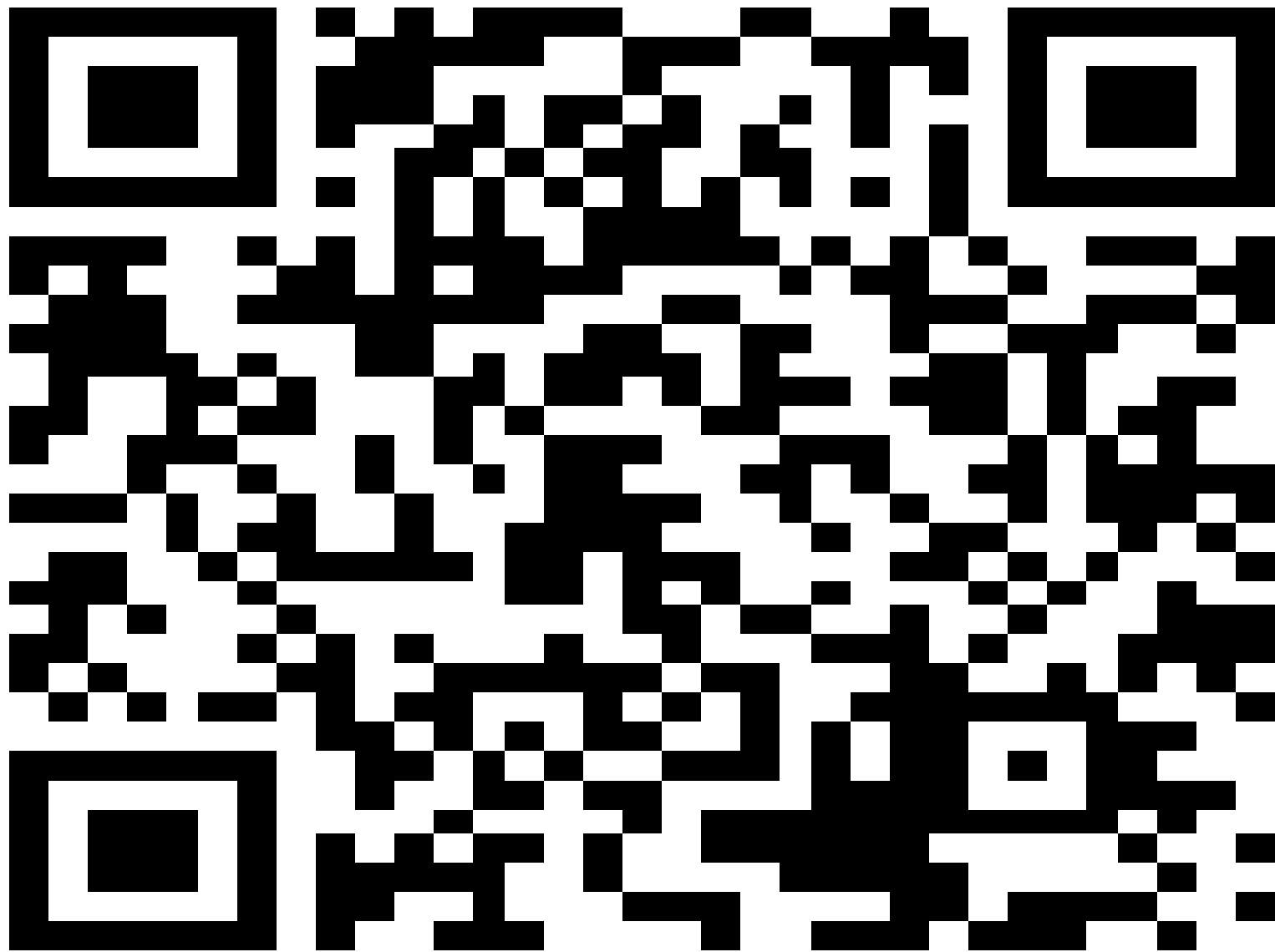
Pool Hill Estate
improvements



**Pool Hill Estate
topographic map**



**Pool Hill Estate
Houston area map**



<http://bit.ly/Fort-Bend-County-Pool-Hill-Estate-YouTube-2>



Southwest Partners

Global Partners

INTERNATIONAL REALTY

MALLORI GIBBS-RAMEY

Luxury Ranch Team Leader

713.503.6247

mallori.gibbs.ramey@southwestpartnersre.com

<http://www.southwestpartnersre.com/mallori.gibbs.ramey>

