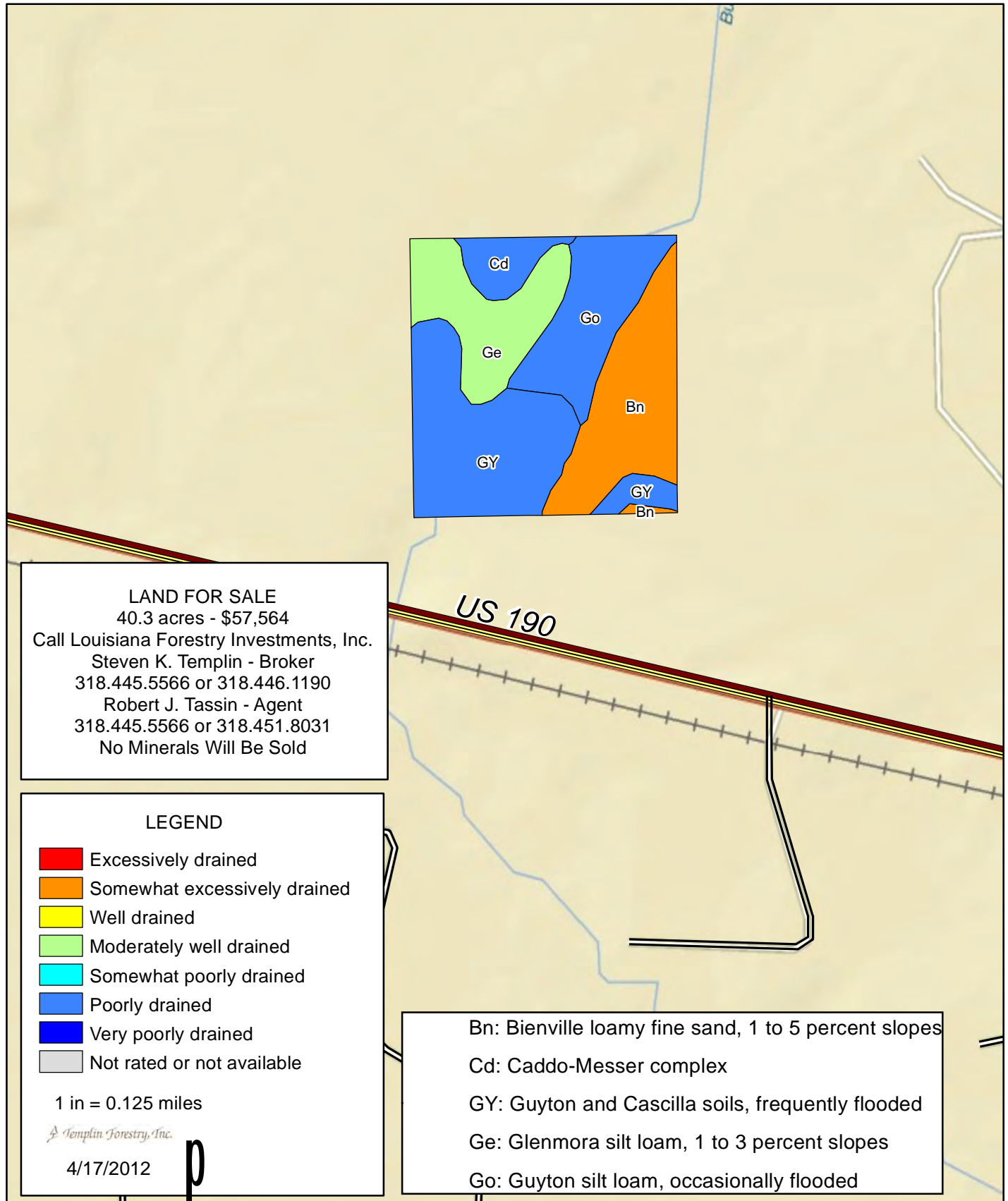


Timberland For Sale

Tract 6958 - 4 - Soils Map

40.3 acres, more or less, being the SE/4 of the NE/4,
Section 21, T6S, R6W, Allen Parish, Louisiana.



Brief Map Unit Description

Allen Parish, Louisiana

[Only those map units that have entries for the selected description categories are included in this report]

Map unit: Bn - Bienville loamy fine sand, 1 to 5 percent slopes

Description category: WDS

Soils in this group are well drained and sandy with a high potential for productivity. Equipment limitations and seedling mortality are moderate. They are best suited for southern pines. Site index for loblolly and slash pine is 90, shortleaf 80.

Map unit: Cd - Caddo-Messer complex

Description category: WDS

This group consists of wet, occasionally to frequently flooded loamy soils with a high potential for productivity. Equipment limitations are severe and seedling mortality is moderate to severe. This is due primarily to excess water. These soils are well suited for either southern pine or hardwood. Silvicultural operations should be restricted to dry weather periods. Plant more seedlings than the recommended rate on these soils to ensure a stand. Site index for loblolly and slash pine is 90, cottonwood 90-100, green ash, water oak and sweetgum 90.

These are slightly to moderately wet, acid, loamy and clayey soils. The potential for productivity is high. Equipment limitations are moderate due to excess water. Silvicultural operations should be restricted to dry weather periods. These soils are well suited for either southern pines or hardwood. Site index for loblolly and slash pine is 90, oaks and sweetgum 90.

Map unit: Ge - Glenmora silt loam, 1 to 3 percent slopes

Description category: WDS

These are slightly to moderately wet, acid, loamy and clayey soils. The potential for productivity is high. Equipment limitations are moderate due to excess water. Silvicultural operations should be restricted to dry weather periods. These soils are well suited for either southern pines or hardwood. Site index for loblolly and slash pine is 90, oaks and sweetgum 90.

Map unit: Go - Guyton silt loam, occasionally flooded

Description category: WDS

This group consists of wet, occasionally to frequently flooded loamy soils with a high potential for productivity. Equipment limitations are severe and seedling mortality is moderate to severe. This is due primarily to excess water. These soils are well suited for either southern pine or hardwood. Silvicultural operations should be restricted to dry weather periods. Plant more seedlings than the recommended rate on these soils to ensure a stand. Site index for loblolly and slash pine is 90, cottonwood 90-100, green ash, water oak and sweetgum 90.

Map unit: GY - Guyton and Cascilla soils, frequently flooded

Description category: WDS

This group consists of wet, occasionally to frequently flooded loamy soils with a high potential for productivity. Equipment limitations are severe and seedling mortality is moderate to severe. This is due primarily to excess water. These soils are well suited for either southern pine or hardwood. Silvicultural operations should be restricted to dry weather periods. Plant more seedlings than the recommended rate on these soils to ensure a stand. Site index for loblolly and slash pine is 90, cottonwood 90-100, green ash, water oak and sweetgum 90.

These soils are well drained, loamy soils with a very high potential for productivity. There are no serious management problems. These soils are suited for either southern pines or hardwood. Site index for green ash is 100, cotton wood 110-120, oak and sweetgum 100, loblolly and slash pine 90-110.