



Amarillo Office
3430 I-40 West
Amarillo, TX 79102
Ph: 806-355-9856
Fax: 806-358-3481

[Home](#)[New Listings](#)[Listings](#)[Links](#)[Join our Mailing List](#)[Our Company](#)[Our Agents](#)[Contact Us](#)

Property
ID:
Moore20

[Click Images to Enlarge](#)



Price: \$480,000.00

Acreage: 100.00

Price Per Acre: \$4800.00

Mineral Rights: None

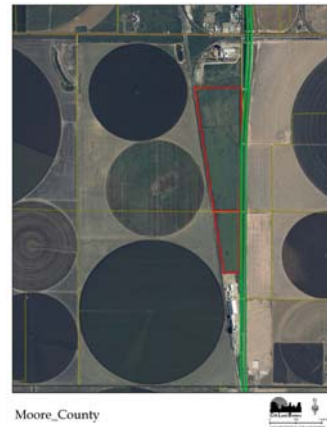
Topography: Flat

Latitude: 36.013974

Longitude: -101.9981

Access to Property: US Hwy 287

Moore County
Commercial
[Bryan Clift](#)



From Etter, TX go south on US Hwy 287, 0.3 miles south of FM 281 to the northeast corner of the property. Property on the west side of Hwy 287.

Improvements:

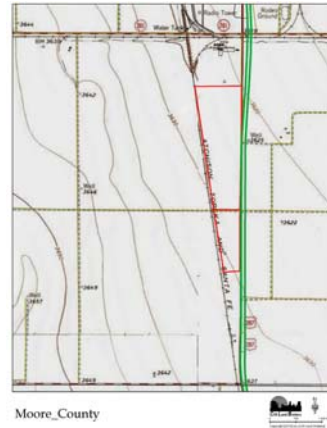
Home or Commercial Buildings:
Great Commercial Location

Utilities:

Electricity:
Yes

Additional Information:

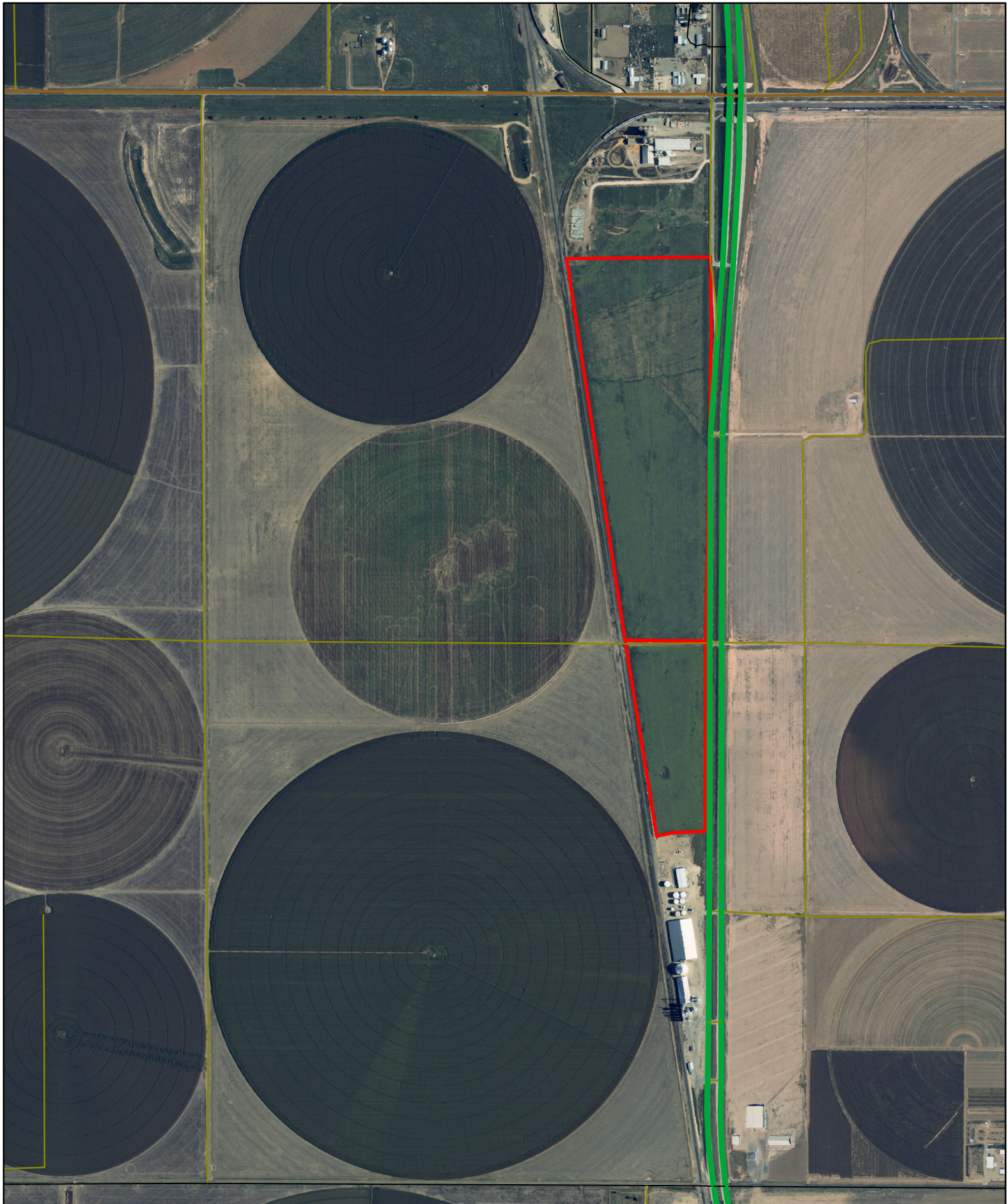
This strip of land lies between US Hwy 287 and the railroad tracks and would make a great commercial location. It is just south of Etter, TX. There is a road that turns into this property off of Hwy 287.



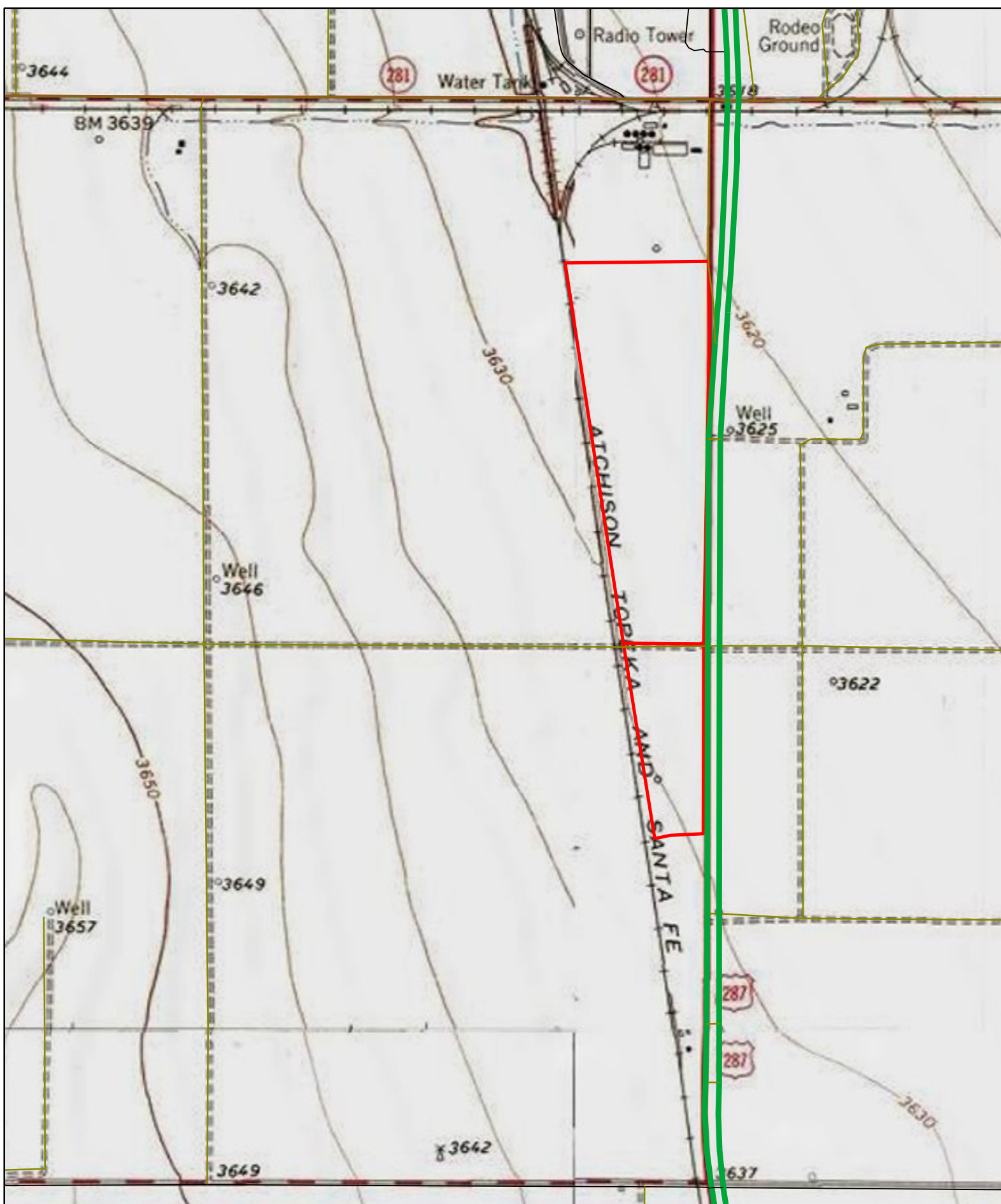
Dalhart Office 301 E. 4th St Dalhart, TX 79022 Phone: 806.244.5121 Facsimile:	Pampa Office 105 East Foster St Bank of America Building Pampa, TX 79065 Phone: 806.688.0066 Facsimile: 806.655.1612	Perryton Office 417 S. Amherst Perryton, TX 79070 Phone: 806.434.1407 Facsimile: 806.435.5123	Hereford Office 815 S. 25 Mile Ave Hereford, TX 79045 Phone: 806.364.5000 Facsimile: 806.363.6915	Littlefield Office 213 E. Marshall Howard Blvd. Littlefield, TX 79339 Phone: 806.385.0905 Facsimile: 806.385.0906
--	--	--	--	--

Print This Page

Disclaimer: All information deemed reliable but not guaranteed and should be independently verified. All properties are subject to change, withdrawal, or prior sale. Clift Land Brokers shall not be responsible or liable for typographical errors, misprints, or misinformation.



Moore_County



Moore_County



Clift Land Brokers

0 750 1,500 Feet

Copyright [2010] by [Clift Land Brokers]

