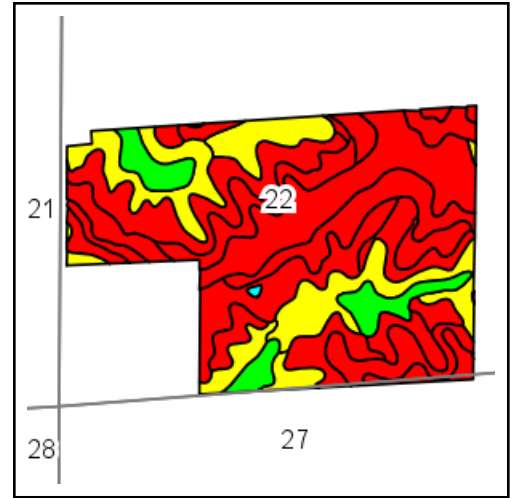
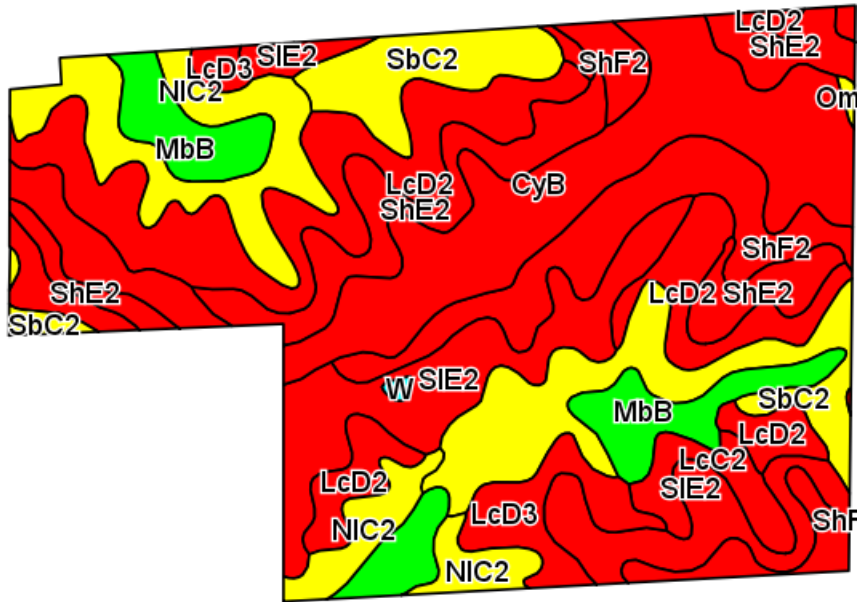


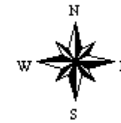
Soils Map



State: **Iowa**
 County: **Madison**
 Location: **22-74N-26W**
 Township: **Ohio**
 Acres: **196.6**
 Date: **5/23/2012**



Maps provided by:



Field borders provided by Farm Service Agency as of 5/21/2008.
 Soils data provided by USDA and NRCS.

Code	Soil Description	Acres	Percent of field	CSR Legend	Non-Irr Class	CSR	Bromegrass alfalfa	Bromegrass alfalfa hay	Corn	Kentucky bluegrass	Oats	Smooth bromegrass	Soybeans
CyB	Colo-Ely silty clay loams, gullied, 2 to 5 percent slopes	35.4	18.0%		Vw	10	6.7		93	0.5	37	4.8	25
LcD2	Lamoni clay loam, 9 to 14 percent slopes, moderately eroded	34.2	17.4%		IVe	15	4.9	2.9	99	1.8	40	3	27
SIE2	Shelby-Lamoni complex, 14 to 18 percent slopes, moderately eroded	24.9	12.7%		Vle	10	6.9	3.2	93	1.9	37	3.2	25
SbC2	Sharpsburg silty clay loam, 5 to 9 percent slopes, moderately eroded	23.9	12.2%		Ille	67	10.1	6	169	3.5	68	5.9	46
ShE2	Shelby loam, 14 to 18 percent slopes, moderately eroded	19.1	9.7%		IVe	38	6.9	4.1	130	2.4	52	4	35
NIC2	Nira silty clay loam, 5 to 9 percent slopes, moderately eroded	18.3	9.3%		Ille	64	10	5.8	165	3.4	66	5.7	45
ShF2	Shelby loam, 18 to 25 percent slopes, moderately eroded	15.5	7.9%		Vle	18	6.2	3.7	103	2.2	41	3.6	28
MbB	Macksburg silty clay loam, 2 to 5 percent slopes	13.9	7.1%		Ile	90	10.8	6.4	201	4	80	6.6	54
LcD3	Lamoni clay loam, 9 to 14 percent slopes, severely eroded	6.9	3.5%		Vle	5	3.5	2.1	86	1.3	34	2.1	23
LcC2	Lamoni clay loam, 5 to 9 percent slopes, moderately eroded	4.1	2.1%		Ille	30	5.5	3.3	120	2	48	3.4	32

W	WATER	0.2	0.1%			0							
OmC	Olmitz loam, 5 to 9 percent slopes	0.2	0.1%		Ille	57	9.3	5.5	156	3.2	62	5.4	42
Weighted Average						32.2	7.3	3.5	122.4	2.2	49	4.3	33.1