

28.61 acres w/ House  
Sumter County, SC



Southeastern Land Brokerage, LLC

South Carolina - North Carolina - Georgia

John Hilton III  
Phone: 803.983.5546

1325 Park Street, Suite 200  
Columbia, SC 29205

John@SELandBrokerage.com  
www.SELandBrokerage.com



**Southeastern Land Brokerage, LLC**  
South Carolina - North Carolina - Georgia

---

## Property Details

**Price:** \$55,790     \$1950/acre

**Acreage/Size:** 28.61 Acres

**Tax Map ID#:** 097-000-2009

**County:** Sumter, SC

**Address/Cross Street:** 6000 J C C Rd

**City:** Wedgefield

**Coordinates:** 33.924934,-80.506761

**Owner Financing & Terms:** N/A

**Description:**

Excellent opportunity – 28+ acres with block house (1463 sqft). House in need of repair to be livable, great potential for storage building or workshop. Land is cleared and level with highly desirable soil types.

Call agent for more information and to schedule viewing –

John – 803.983.5546 or Max – 803.404.8351

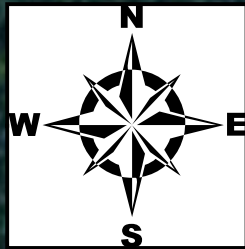


**Southeastern Land Brokerage, LLC**

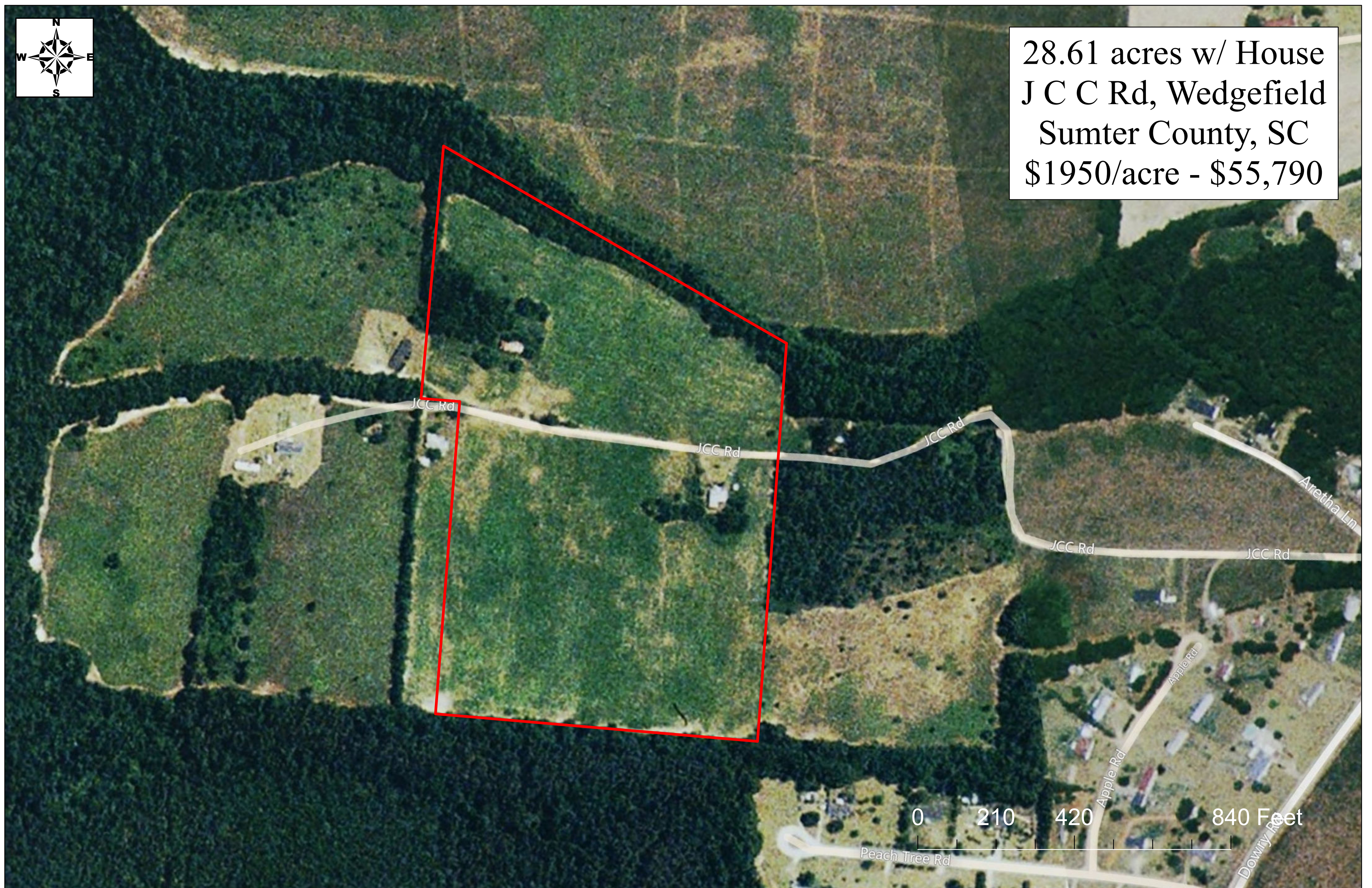
South Carolina - North Carolina - Georgia

---

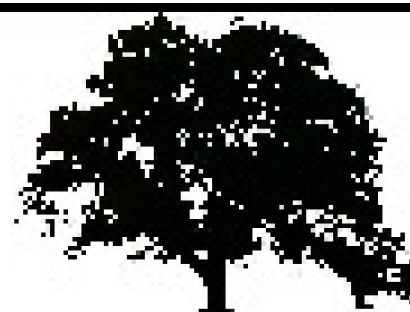




28.61 acres w/ House  
J C C Rd, Wedgefield  
Sumter County, SC  
\$1950/acre - \$55,790



John Hilton  
803.983.5546  
John@SELandBrokerage.com  
www.SELandBrokerage.com

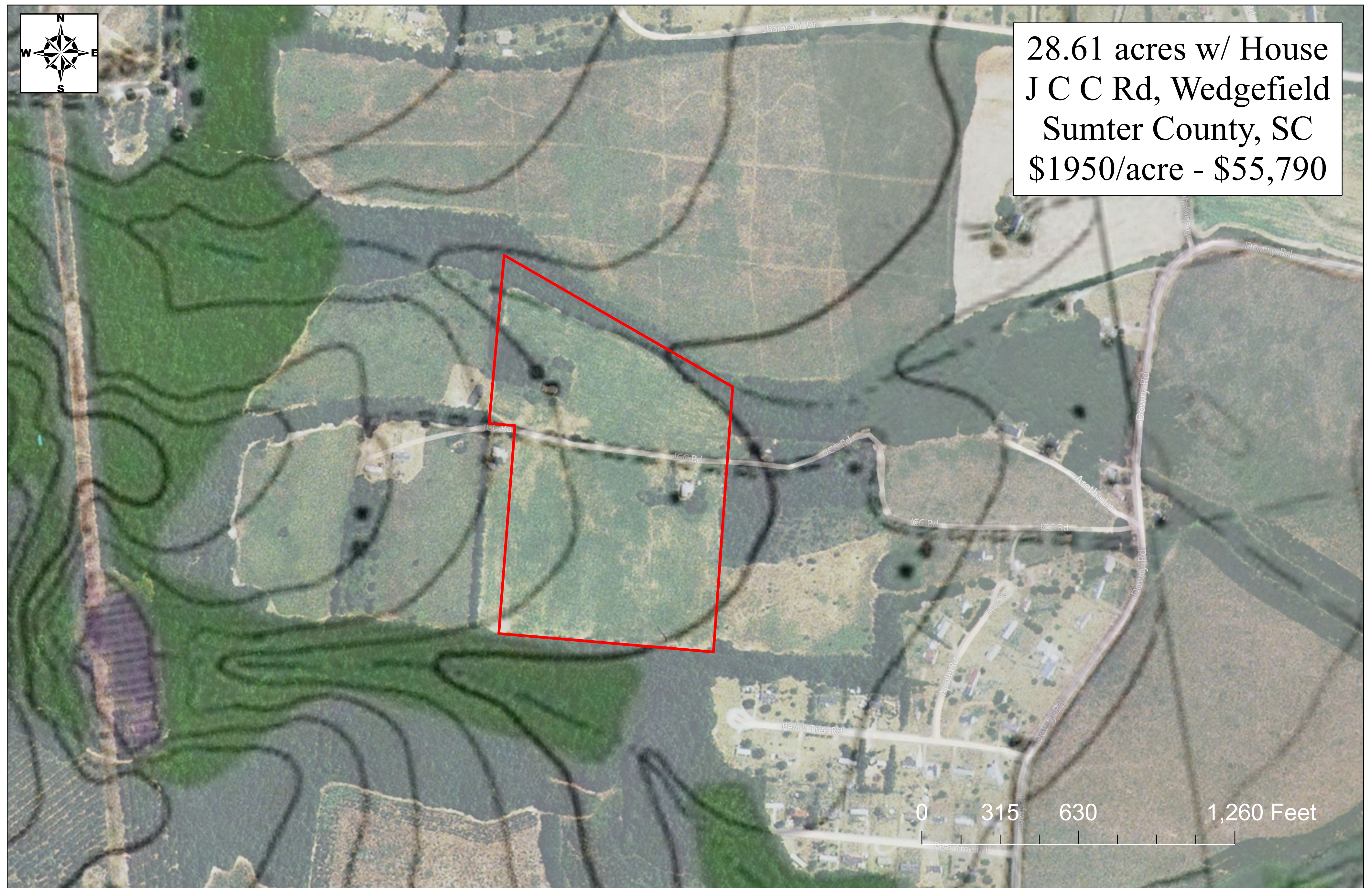


Southeastern Land Brokerage, LLC  
South Carolina - North Carolina - Georgia

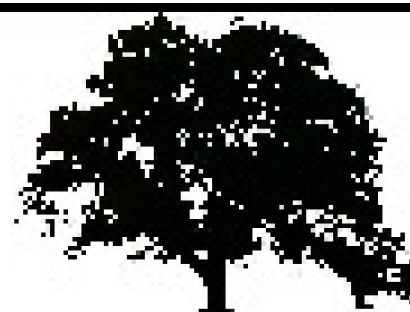




28.61 acres w/ House  
J C C Rd, Wedgefield  
Sumter County, SC  
\$1950/acre - \$55,790

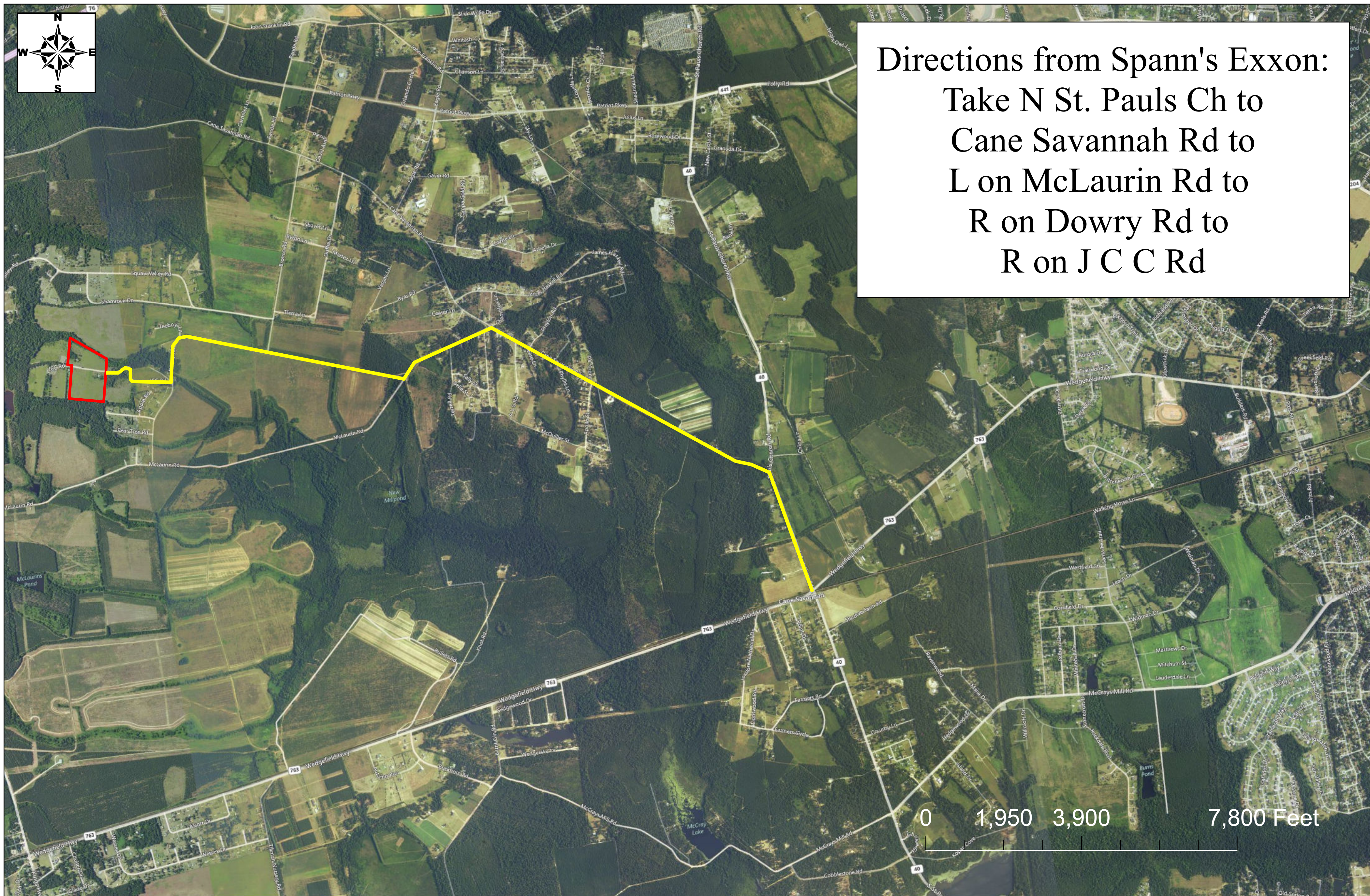


John Hilton  
803.983.5546  
John@SELandBrokerage.com  
www.SELandBrokerage.com



Southeastern Land Brokerage, LLC  
South Carolina - North Carolina - Georgia





Directions from Spann's Exxon:  
Take N St. Pauls Ch to  
Cane Savannah Rd to  
L on McLaurin Rd to  
R on Dowry Rd to  
R on J C C Rd

**John Hilton**  
**803.983.5546**  
**John@SELandBrokerage.com**  
**www.SELandBrokerage.com**



**Southeastern Land Brokerage, LLC**  
South Carolina - North Carolina - Georgia