



Protecting Clients. Conserving the Land.

High Canyon Ranch

*8,163 Acres, Fort Davis,
Jeff Davis County, Texas
“Sproul Ranch” Since 1886*



James King, Agent

Office 432 426.2024

Cell 432 386.2821

James@KingLandWater.com

King Land & Water LLC
P.O. Box 109, 109 State Street, Suite 1, Fort Davis, TX 79734
office 432.426.2024 fax 432.224.1110 kinglandwater.com

High Canyon Ranch

8,163 acres

Jeff Davis County, Texas

"Sproul Ranch" since 1886

James King, Agent

Office 432 426.2024

James@KingLandWater.com

Location

High Canyon Ranch is comprised of 8,163 acres and is being offered for sale by the Sproul and Timmons family who have owned the ranch since 1886. It is located off Highway 118 a historic Scenic Loop below McDonald Observatory in the Davis Mountains of West Texas. The property is only ten miles east of the 33,000 acre Davis Mountain Preserve and in proximity to additional large stable private ranches some with conservation easements. It is part of a protected ranch neighborhood with unobstructed views of the observatory, canyons, and area mountains. High Canyon Ranch is very close to Fort Davis and its various amenities like the State Park and National Historic Site but it is also one of the most secluded ranches in the state of Texas. Access is off the County maintained Sproul Road which Intersects Highway 118 at Prude Ranch then by deeded easement to the main headquarters house five miles off the paved highway.

Acreage

8,163 acres in Jeff Davis County.

Description

High Canyon Ranch is located in the heart of the Davis Mountains, a Sky Island of the Chihuahuan Desert with elevations ranging from 5,200 feet to 6,280 feet. Five major canyons bisect this high forested rangeland creating some of the most scenic bluffs, rocky outcrops, canyons, meadows, and mountains in the region. This is Ponderosa and Pinion Pine country, huge Red Oaks, Big Tooth Maples, Madrone, and lush grasslands. The central geologic features on the ranch are Dry Canyon, Hells Canyon, Short Canyon, Horse Spring Canyon and Frazier Canyon creating magnificent vistas rivaling any national park in the country. There are over 15 springs and 30 tanks that naturally supply the wildlife and its habitat with ample water. Some of the creeks run most years and all of the creeks flow in the cool wet summers of the high Davis Mountains. The views are stunning and overlook the most spectacular scenery in the entire Davis Mountains. Livermore, Black, Haystacks, Blue, Star, and Limpia mountains can all be seen from overlooks on the ranch. Mountain ranges beyond Alpine and Marfa, the Glass and Chinati Mountains (30 to 50 miles distant) can be seen clearly on most days. This is part of the historic Sproul Ranch settled in the late 19th century and has been a working cattle and recreation ranch ever since.



Protecting Clients. Conserving the Land.

The most amazing aspect of the ranch is the well designed road network that allows excellent access throughout the ranch which can be used by vehicles or by horseback for scenic tours. These roads were designed by the Sproul family starting some 100 years ago for working cattle, building earth tanks, and accessing the amazing wildlife that this family has nurtured over the years.

Habitat

The Dallas Natural History Museum has studied the plants and animals in these canyons for decades and even described an endemic Juniper named after the Sproul family. Barton Warnock travelled throughout the ranch with the current owners ancestors in amazement of the diversity of trees, grasses and plants which were documented in his book on the Plants of the Davis Mountains.

This Davis Mountain ranch is dominated by mile high grasslands of Cane Bluestem, Blue Gramma, and Sideoats Gramma but the most amazing component are the trees. Stunning stands of native Emory, Gray, Chisos, and Chincapin Oaks with Alligator Juniper, Pinion, Ponderosa, Maples, and Mexican Walnut. The canyon and mountains create excellent topography and the views of the mountains are nothing short of breathtaking. Excellent grasses and Chihuahuan Desert plants provide habitat for the native animals, livestock and the people who live there. The diversity of plants especially near and around the springs and riparian areas are unequaled in the Davis Mountains.

Wildlife

Because of the diverse habitat with springs, creeks, boulders, trees, grasses and mountains there is an abundance of game and non-game animals and wildlife on High Canyon Ranch. This is big Mule Deer country and an expanding population of Rocky Mountain Elk make this a hunter's paradise. There are also smaller animal and bird species found here like Javelina, Fox, Ringtail, Mountain Lion, Zone Tail Hawk, Black Hawk, and Montezuma Quail. Native trees, brush and grasses provide excellent habitat for these species and many native birds and other non-game animals. Wooded wet canyons and lush grasslands provide excellent habitat for migratory songbirds.

Improvements

The Headquarters has recently been completely remodeled with the main house being a two bedroom two bath adobe home with a wrap around screen porch and modern kitchen. There is also a studio, garage, barn, workers cabin, corrals and outbuildings nearby giving the headquarters a functional working ranch feel nestled on the banks of Frazier Canyon under huge 100 year old Emory Oaks. Way back in Dry Canyon under impressive Oaks and Ponderosa Pines are two separate hunting cabins feed by springs located along spectacular Dry Creek and its running waters and beautiful clear pools.

Water

The ranch is watered naturally by over 15 springs, creeks, and over 30 dirt tanks and header dams. The main house and headquarters is supplied by a spring that is captured stored and distributed by pipelines. Several of the other springs have been designed to capture water and transfer water to troughs for wildlife and cattle.

Price

\$1,578 per acre or \$12,881,214.00. Owners will consider dividing into two or three tracts.

Contact

James King, Agent

King Land & Water, LLC

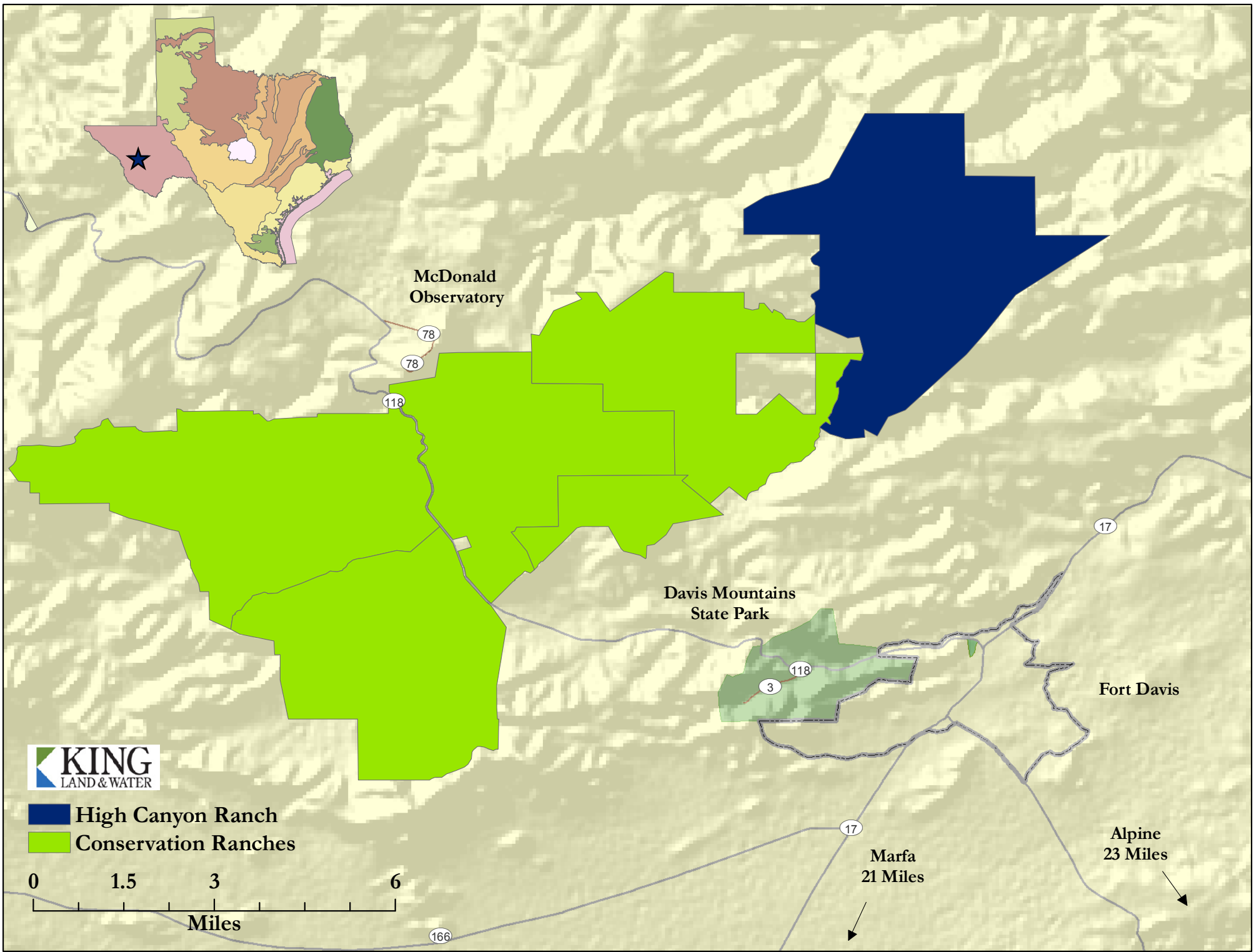
432 426.2024 Office

432 386.2821 Cell

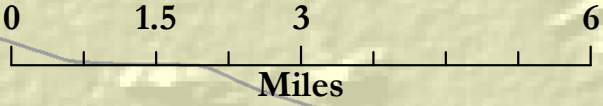
James@KingLandWater.com

Disclaimer

This Ranch offering is subject to prior sale, change in price, or removal from the market without notice. While the information above was provided by sources deemed reliable, it is in no way guaranteed by the broker or agent.



-  High Canyon Ranch
-  Conservation Ranches



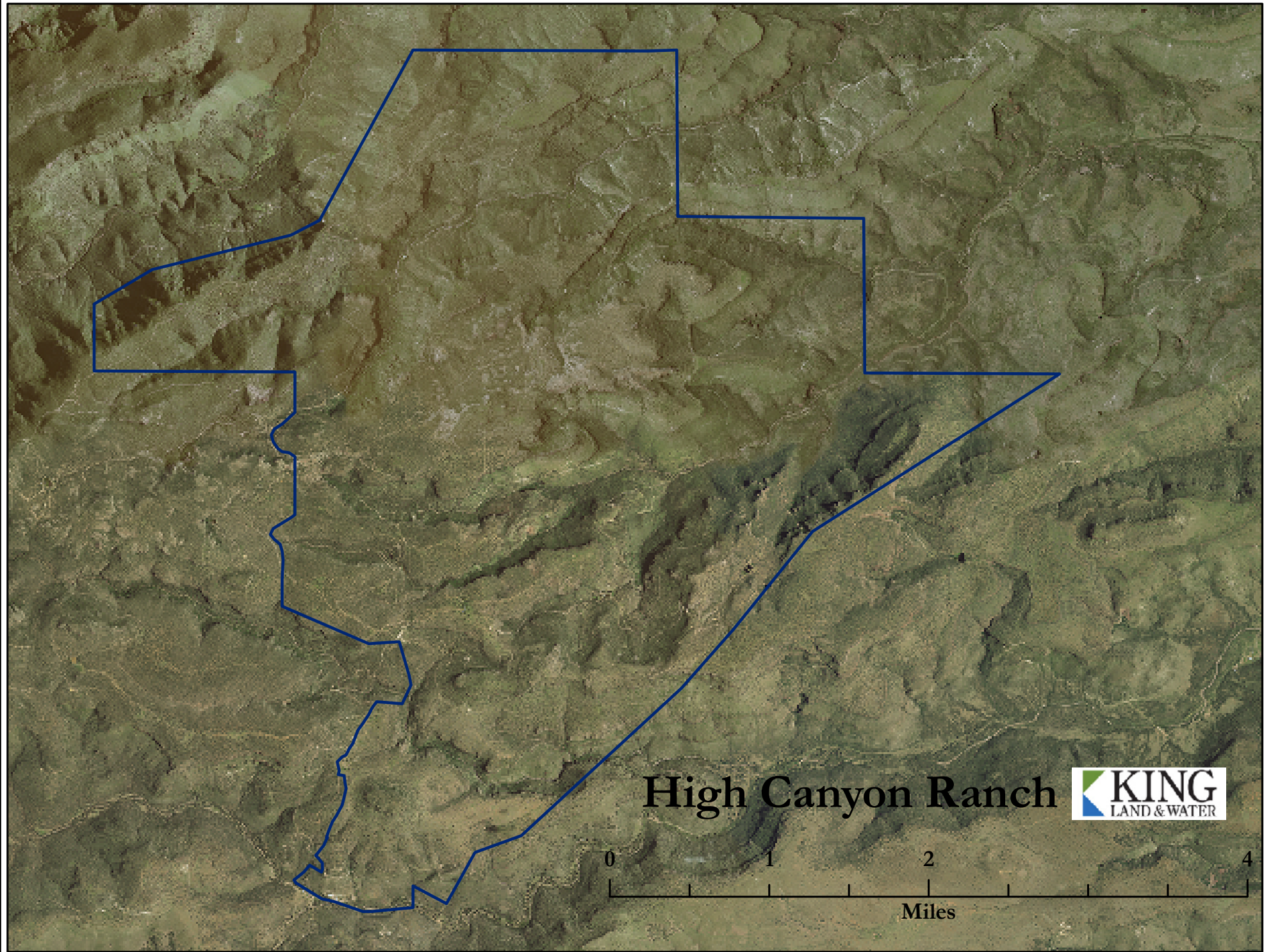
McDonald
Observatory

Davis Mountains
State Park

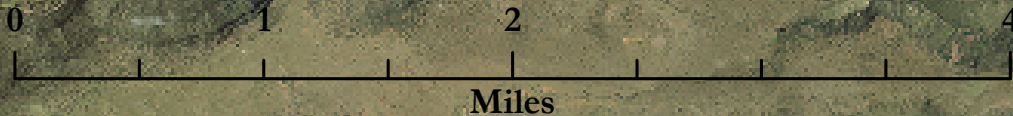
Fort Davis

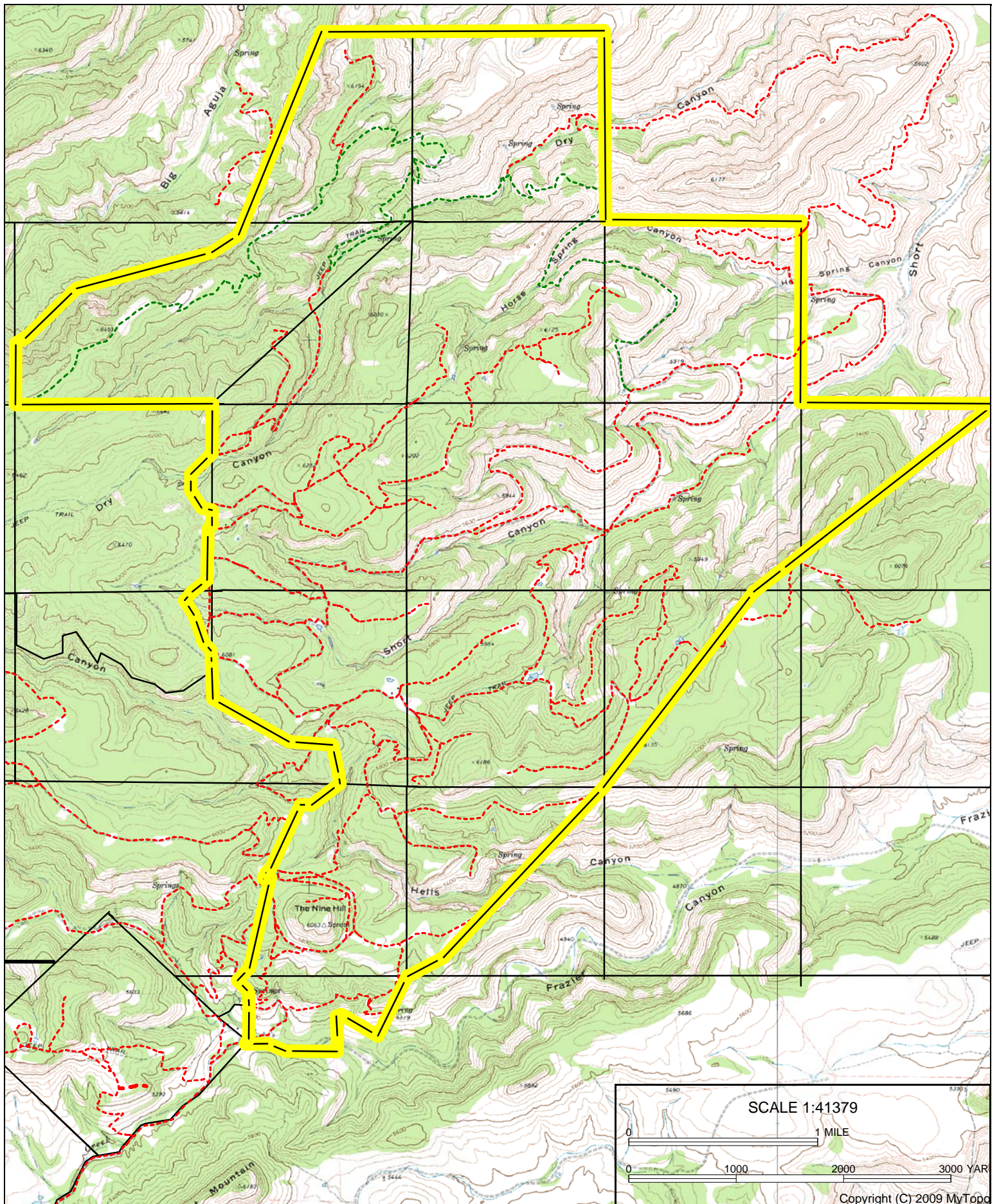
Marfa
21 Miles

Alpine
23 Miles



High Canyon Ranch





High Canyon Ranch
8,163 Acres
Scale: 1 inch = 3,448 ft.



Location: 030° 41' 16.94" N 103° 53' 59.73" W











