



**Bellemonte**







**B**ellemonite is a 626 acre cattle farm just west of Staunton, in the heart of the Shenandoah Valley. There is a tremendous panoramic view to the west of the nearby Allegheny Mountains, covered by the George Washington National Forest (a million acres, hundreds of miles of trails). The farm has gentle topography and good soils with long road frontage on both the front and the rear of the property. Local zoning permits easy division into smaller farms.

**Main House with 326 Acres for  
\$3,500,000.**

**Dairy Operation with 300 Acres for  
\$2,500,000.**

**Entire Property with 626 Acres for  
5,500,000.**







**A** large 1840 two story white brick manor house, recently renovated, sits on a knoll at the end of a long drive lined with dogwoods. The 4,700 sq/ft house has many wood burning fireplaces, antique mantels, four bedrooms, large living room, large modern kitchen and a 26x30 family room. From the house much of the crop land, pasture, ponds, barns, and woods are visible.















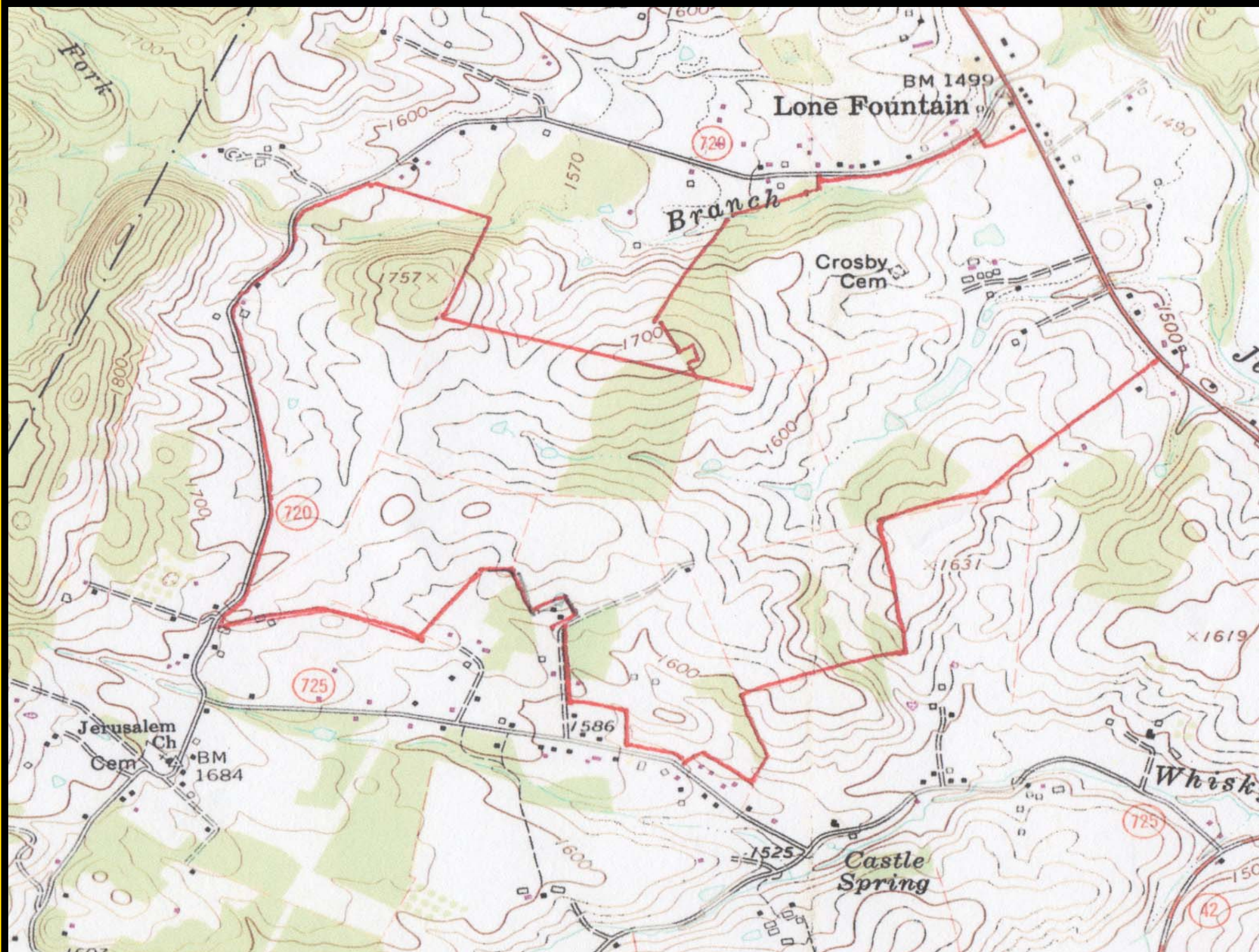
















# VIRGINIA ESTATES

VIRGINIA'S FINEST REAL ESTATE

877-646-8800

Rick Walden

434-296-1234