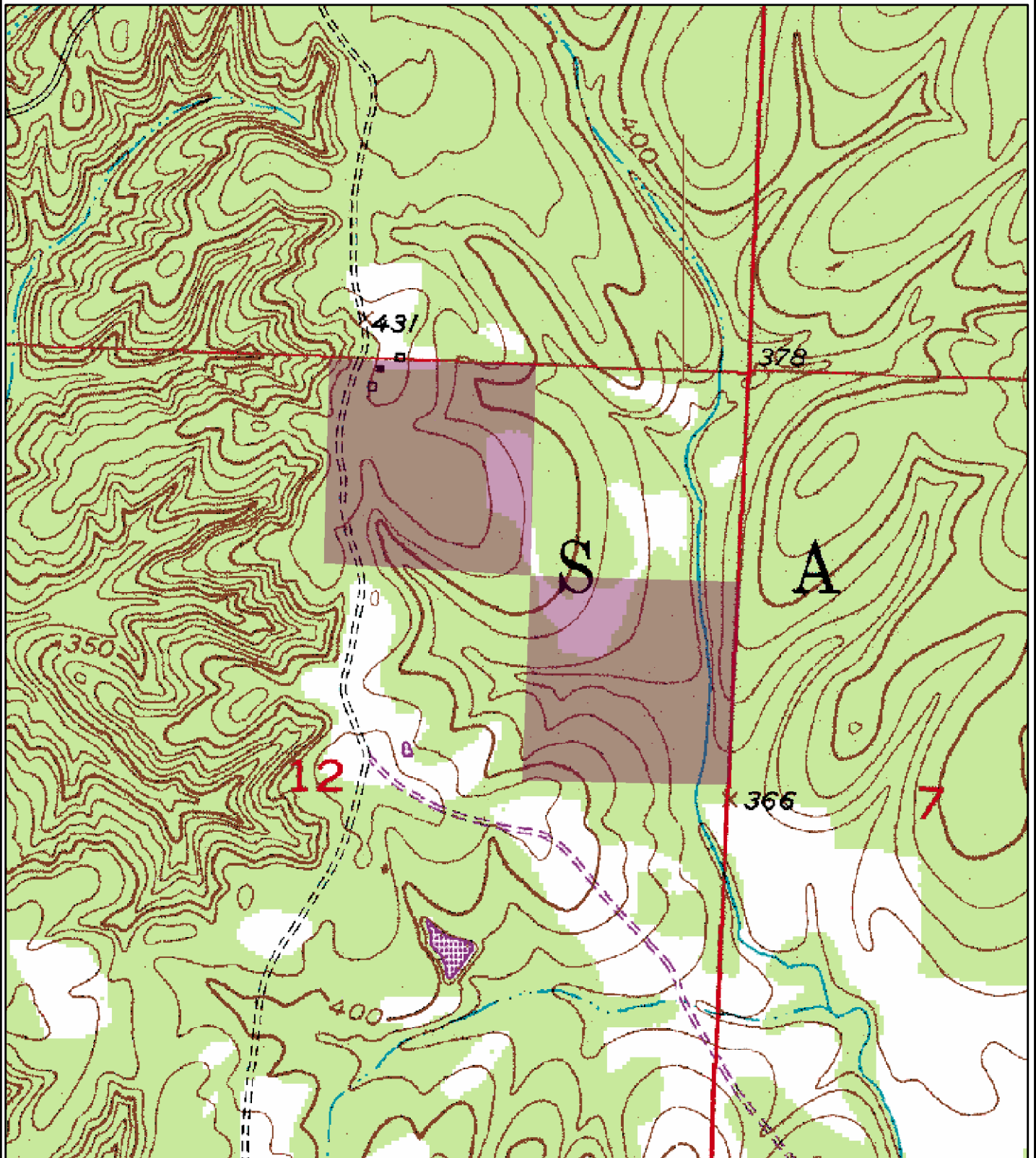


NOTICE OF LAND SALE  
Saratoga Tract - Listing #4296  
NW¼ of NE¼, SE¼ of NE¼, Sec. 12, T12S, R27W, Hempstead County, Arkansas  
Containing 80 acres, more or less



0 0.125 0.25  
Miles



Created: December, 2011  
Drawn By: JDT