

69.4 ACRES CUMBERLAND COUNTY, VIRGINIA

PRICE - \$189,950



REPRESENTED BY:

WILLIAM G. GRANT
ALC, VLS

G. EDMOND MASSIE, IV
ALC, CCIM, MBA

TABLE OF CONTENTS

- I. PROPERTY DESCRIPTION
- II. TAX MAP
- III. PLAT
- IV. AERIAL PHOTO
- V. TOPOGRAPHIC MAP
- VI. LOCATION MAP
- VII. FLYER

PROPERTY DESCRIPTION

The subject property is shown on Cumberland County Tax Map records as parcel number 45-A-11. According to the tax records the property contains 69.4 acres. The deed is recorded as Deed Instrument 20101347. A review of the Cumberland County Tax Records indicates the following:

<u>Tax Map Number</u>	<u>Acreage</u>
45-A-11	69.4

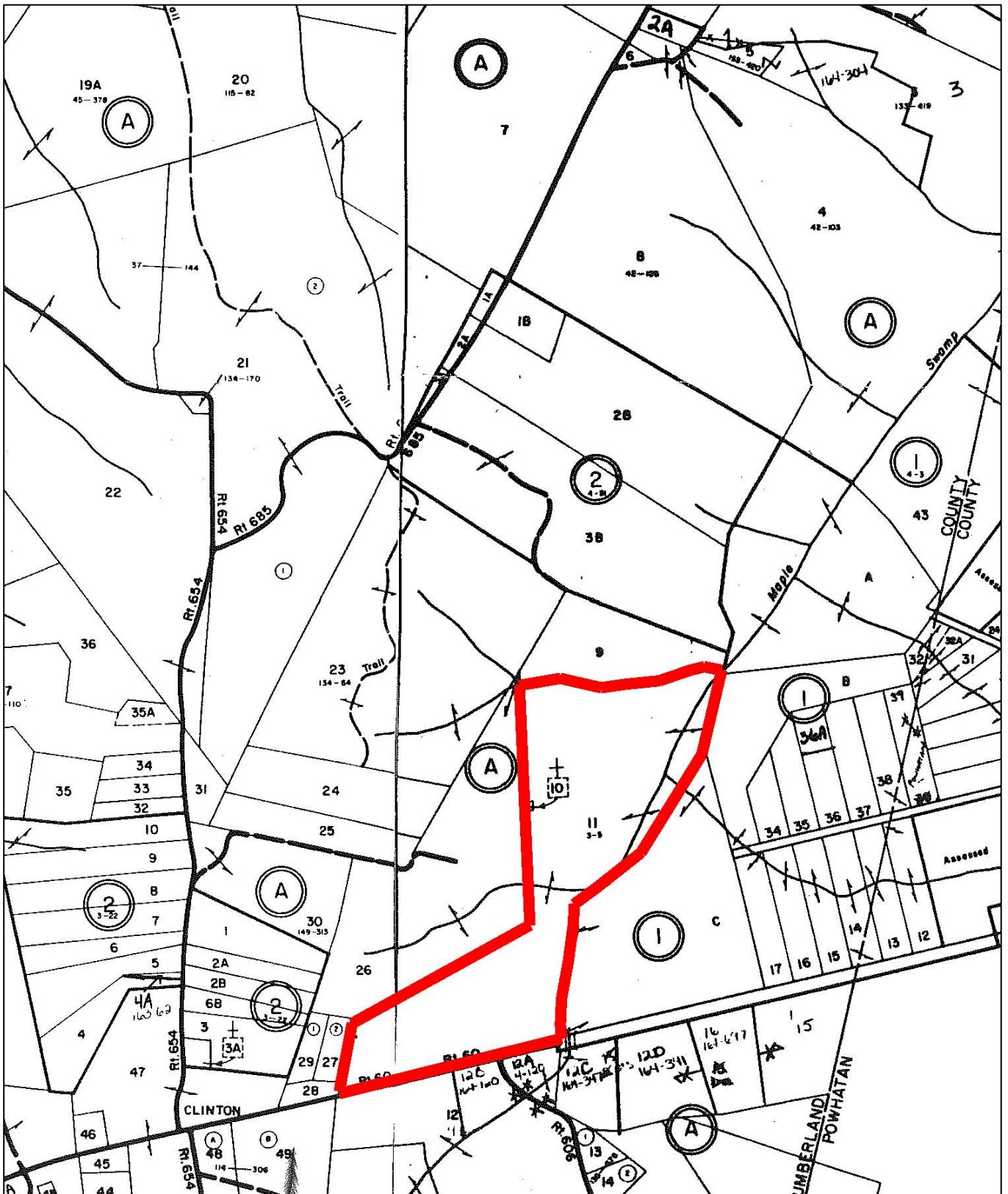
The subject property is currently zoned Agricultural. There are approximately 1,735' of road frontage on State Route 60 just west of the Cumberland/Powhatan line..

The property is wooded but some of the timber was removed several years ago.

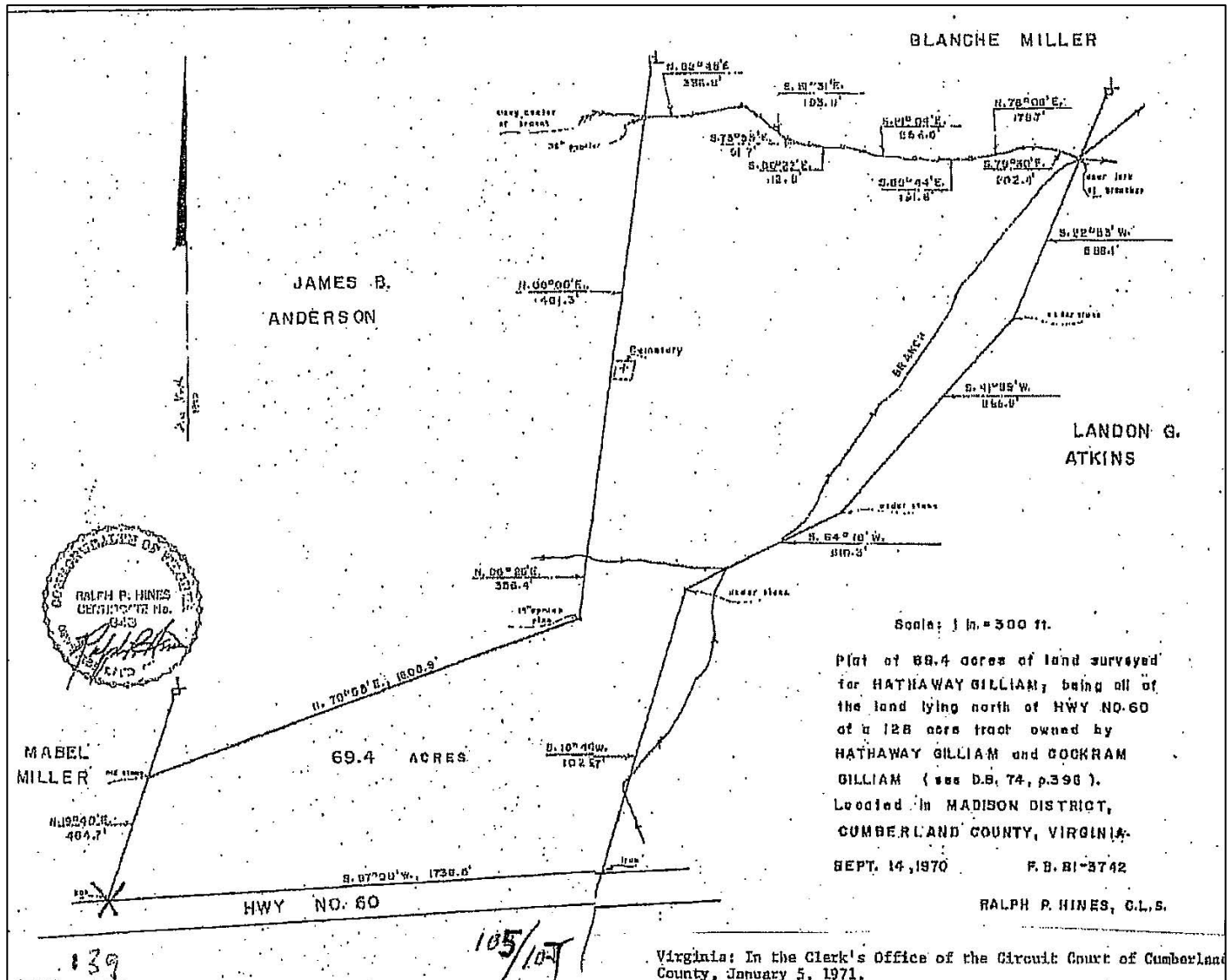
PHOTOS



TAX MAP



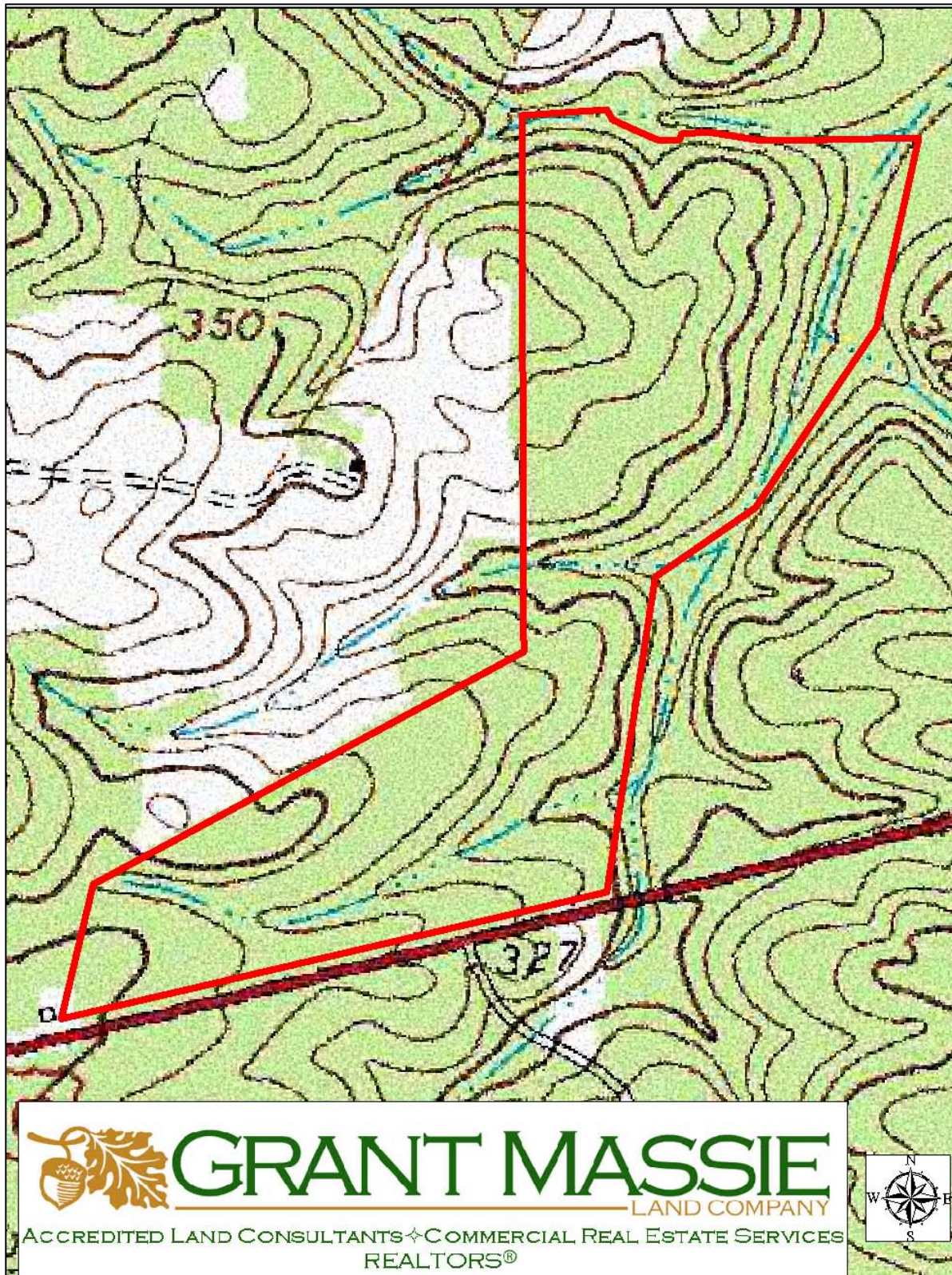
PLAT



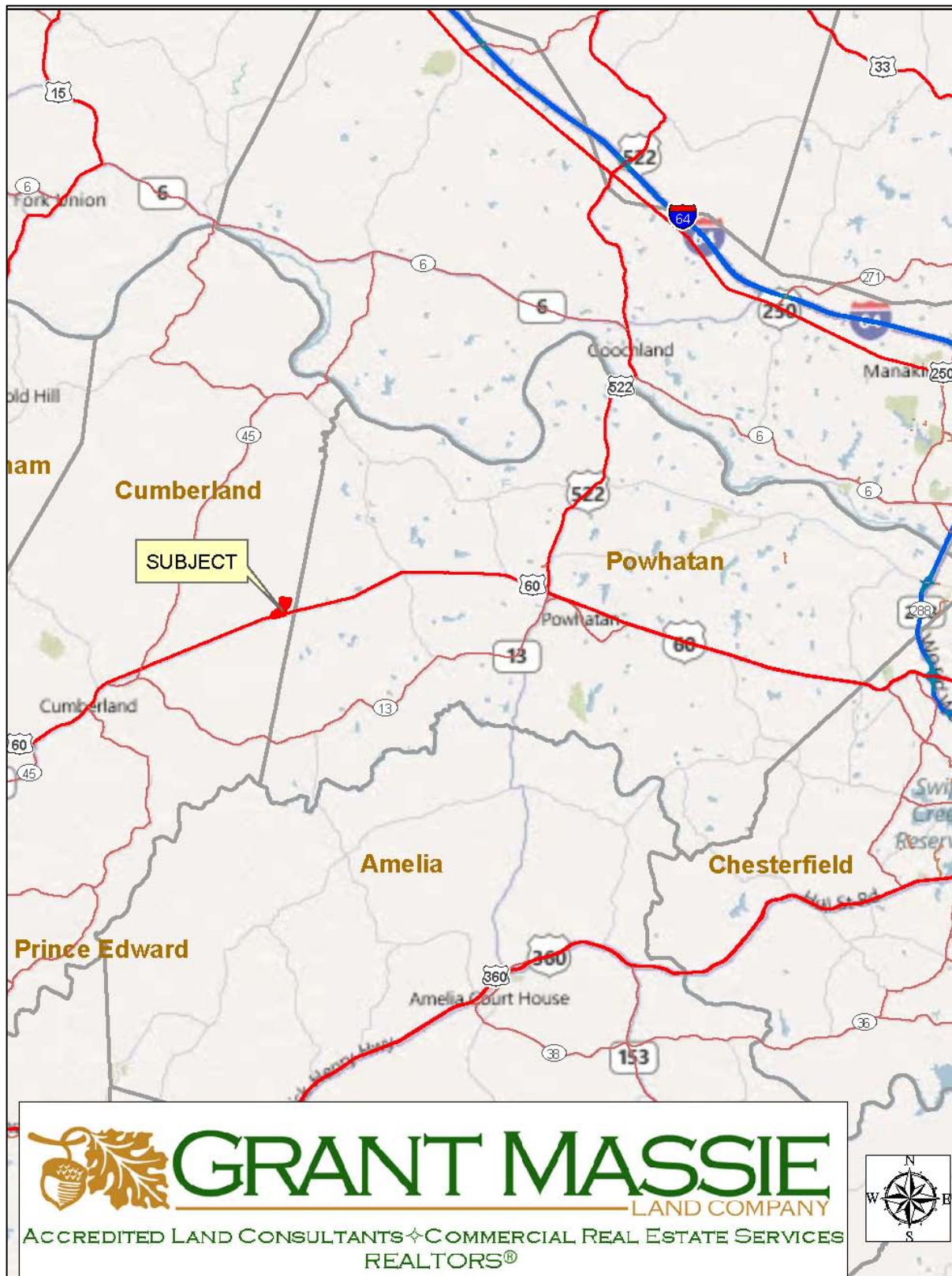
AERIAL PHOTOGRAPH



TOPOGRAPHIC MAP



LOCATION MAP



69.4 ACRE TRACT ON ROUTE 60 FOR SALE

CUMBERLAND/POWHATAN COUNTY LINE



PROPERTY INFORMATION:

- *WOODED TRACT WITH MIXED TIMBER.
- *1,735 FEET +/- FRONTAGE ON ROUTE 60.
- *IN CUMBERLAND AT THE COUNTY LINE.
- *IDEAL FOR HOMESITE, HUNTING, ETC
- *GREAT INVESTMENT WITH GOOD FUTURE POTENTIAL

***PRICED TO SELL—\$189,950**



FOR 24 HOUR RECORDED INFORMATION
CALL LANDLINE
1-888-471-LAND #2174
OR VISIT OUR WEBSITE
WWW.GRANTMASSIE.COM

REPRESENTED BY:

BILL GRANT

ALC, VLS

804-754-3476

WGrant@GrantMassie.com

NED MASSIE

ALC, CCIM

804-754-3474

NMassie@GrantMassie.com



GRANT MASSIE
LAND COMPANY

ACCREDITED LAND CONSULTANTS ♦ COMMERCIAL REAL ESTATE SERVICES
REALTORS®

EXPERTISE—CONSULTATION—RESULTS

1403 PEMBERTON ROAD, SUITE 106—RICHMOND, VA 23238

804-750-1200—TOLL FREE: 1-800-665-LAND

ALL INFORMATION DEEMED RELIABLE BUT NOT GUARANTEED.